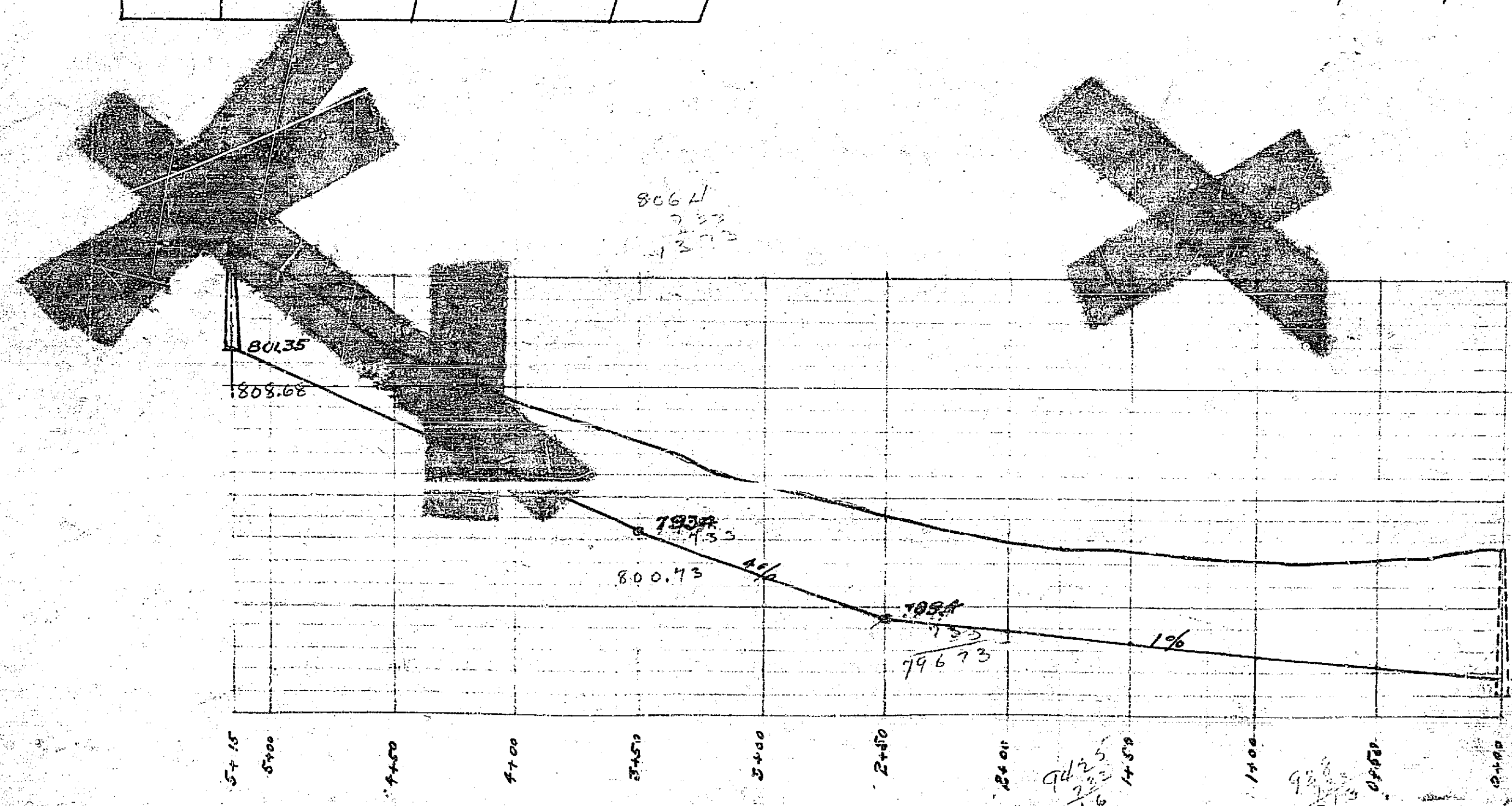
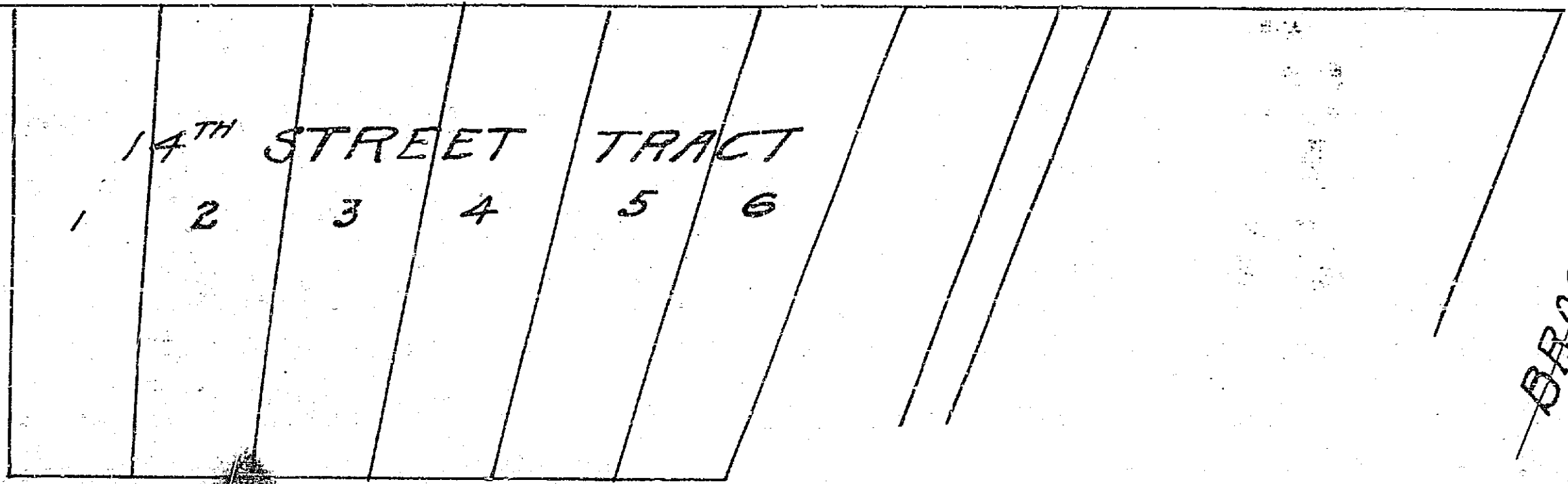
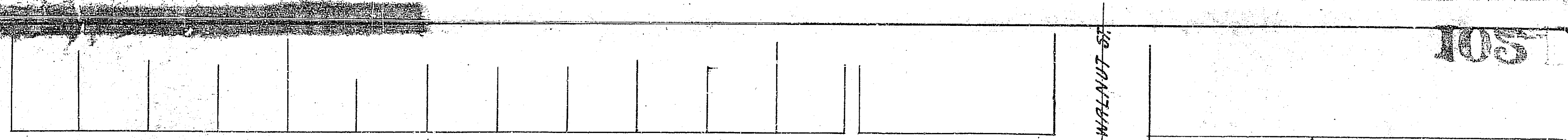


105



FB 107 P 79

Map Showing PROPOSED SEWER IN

14<sup>TH</sup> ST. Westerly from WALNUT ST.

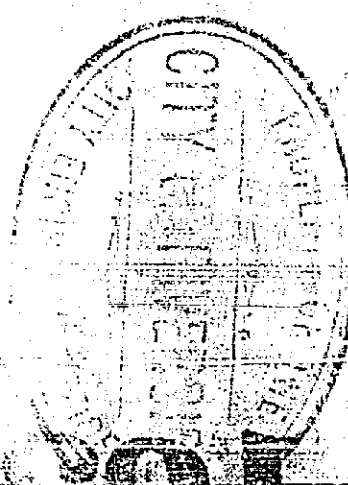
Scale of 1 in = 60 ft. A.P. Campbell City Engineer  
Profile Hor. 1" = 60' Ver. 1" = 6'

February 1913

Adopted by the Mayor and Common Council of the City of Riverside

February 18, 1913

Attest: *[Signature]* City Clerk



1020

8016  
70  
8013  
993  
1263  
975  
57483  
953  
1263