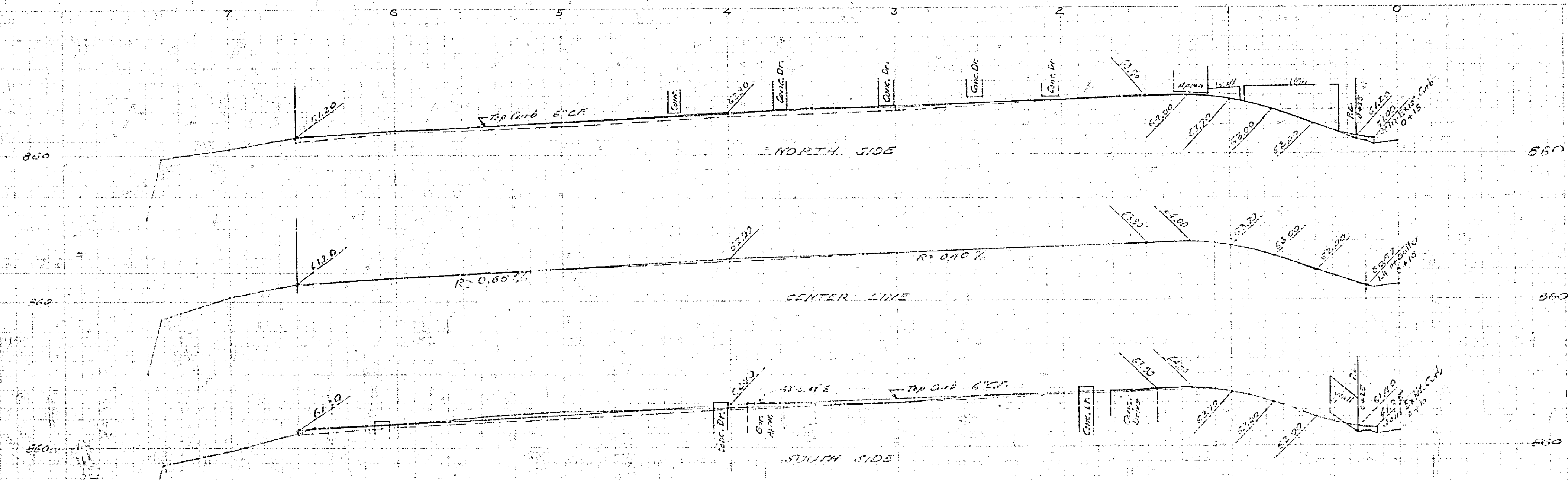
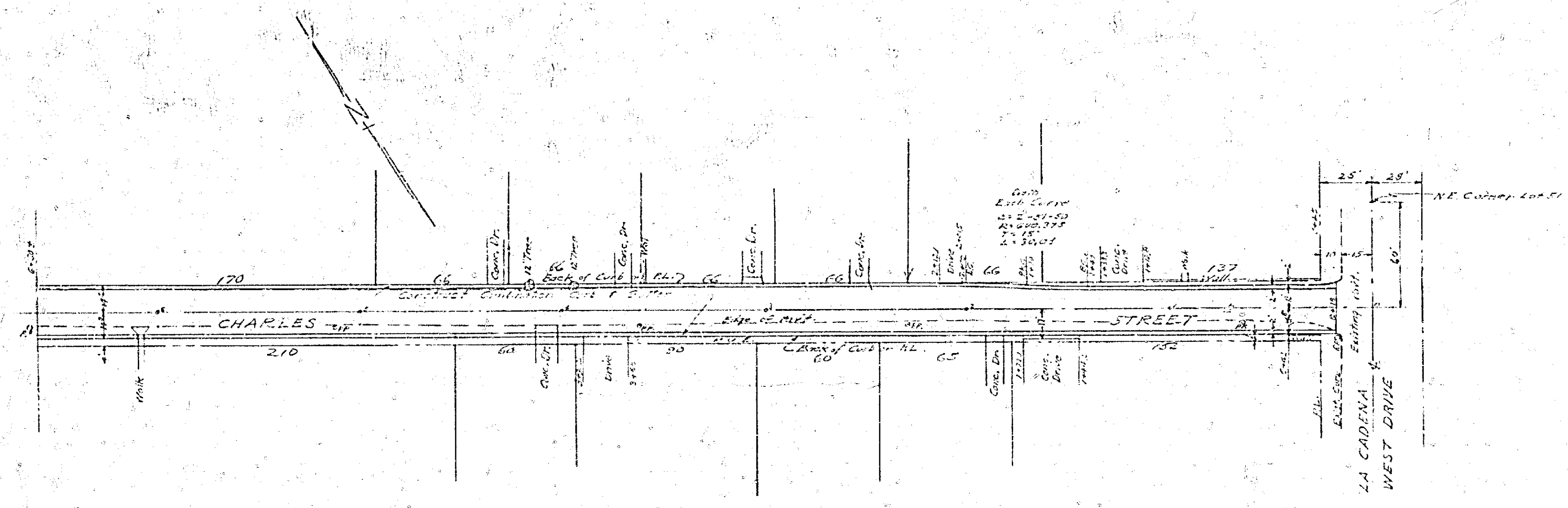


PLAN NO. 821  
 PROPOSED CURB GRADES ON  
 CHARLES ST.  
 FROM LA CADENA DRIVE WEST 600'  
 FB. 536-23 1-31-65 SCALES HORIZ 1"=40'  
 APRIL 1963 VERT 1"=4'

CITY OF RIVERSIDE CALIFORNIA

APPROVED  
 M. IRVINE REG. C.E. 5011  
 CITY ENGINEER



821

22"

17"

11"

9'8"

8.5"

11"

17"

22"

22"

17"

11"

9'8"

8.5"

11"

17"

22"

34"

22"

17"

11"

8.5"

8.5"

11"

17"

22"

17"

11"

8.5"

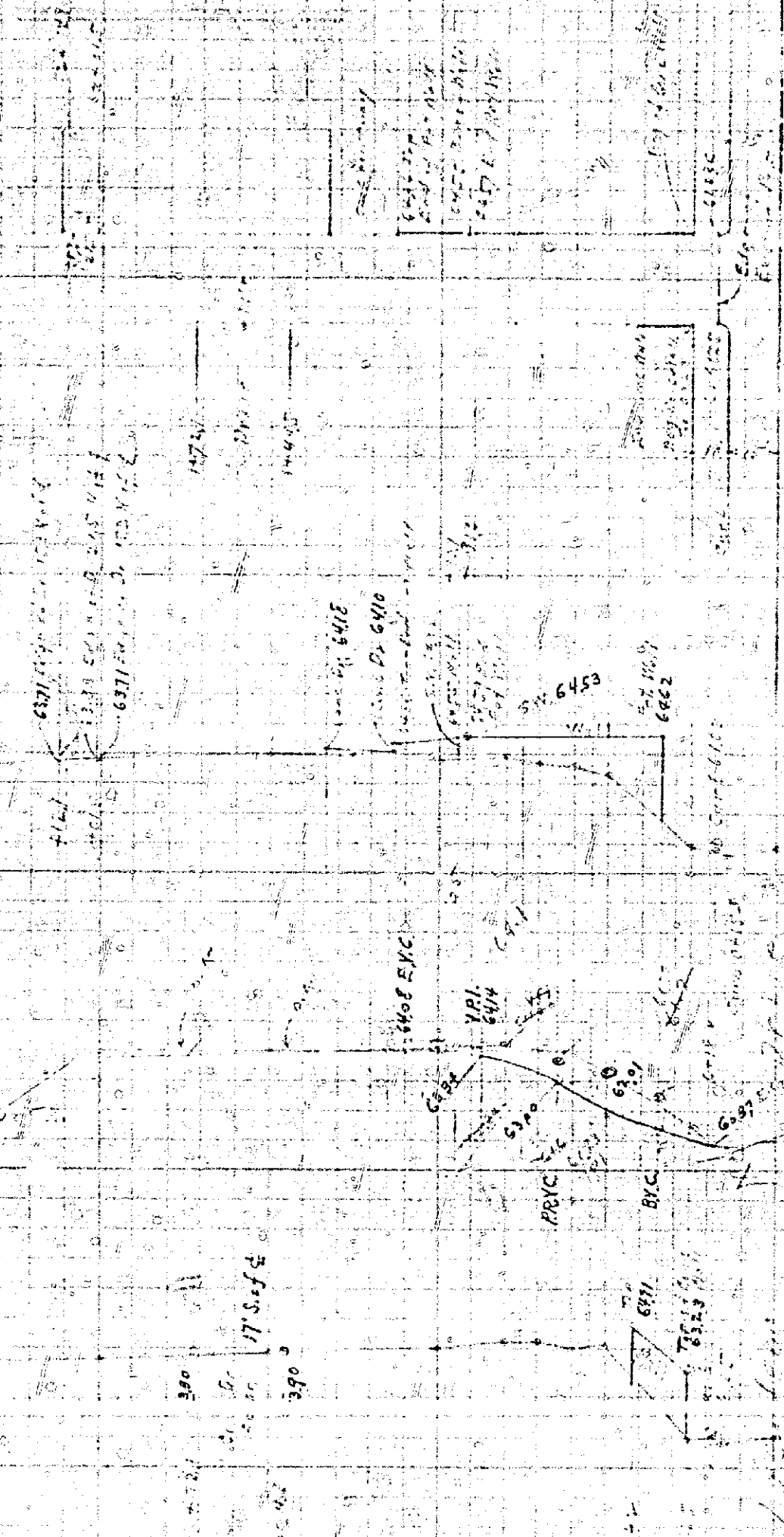
8.5"

11"

17"

22"

Charles St.



Handwritten notes on the right side of the diagram:

- Y.S. street and
- W. 1st St. and
- W. 2nd St. and
- W. 3rd St. and
- W. 4th St. and
- W. 5th St. and
- W. 6th St. and
- W. 7th St. and
- W. 8th St. and
- W. 9th St. and
- W. 10th St. and
- W. 11th St. and
- W. 12th St. and
- W. 13th St. and
- W. 14th St. and
- W. 15th St. and
- W. 16th St. and
- W. 17th St. and
- W. 18th St. and
- W. 19th St. and
- W. 20th St. and
- W. 21st St. and
- W. 22nd St. and
- W. 23rd St. and
- W. 24th St. and
- W. 25th St. and
- W. 26th St. and
- W. 27th St. and
- W. 28th St. and
- W. 29th St. and
- W. 30th St. and
- W. 31st St. and
- W. 32nd St. and
- W. 33rd St. and
- W. 34th St. and
- W. 35th St. and
- W. 36th St. and
- W. 37th St. and
- W. 38th St. and
- W. 39th St. and
- W. 40th St. and
- W. 41st St. and
- W. 42nd St. and
- W. 43rd St. and
- W. 44th St. and
- W. 45th St. and
- W. 46th St. and
- W. 47th St. and
- W. 48th St. and
- W. 49th St. and
- W. 50th St. and

O.K. m/s.

FB 431-230

821