

p/m 4/89

PARCEL MAP

IN THE CITY OF RIVERSIDE
RIVERSIDE COUNTY, STATE OF CALIFORNIA

BEING A PORTION OF THE SOUTHEAST 1/4 OF THE NORTHEAST
1/4 OF SECTION 32, T.2 S., R.5 W., S.B.B. & M.

APRIL 1971

SCALE: 1" = 30'

J.F. DAVIDSON ASSOCIATES

RECORDER'S CERTIFICATE

Filed this 12 day of April, 1971,
at 3:25 P.M. in Book 4 of
Parcel Maps at Page 89 at
the request of the City Engineer.
W.D. BALOGH, County Recorder

By Harold C. Beala

Deputy

No. 47496

Fee \$5.00

CITY ENGINEER'S CERTIFICATE

This map has been examined this 10th
day of April 1971, for conformance
with Title 18 of the City of Riverside
Municipal Code and with the requirements
of Section 11575 of the Subdivision Map
Act.

JAMES F. MARTINEK, City Engineer

TENTATIVE MAP APPROVED JUNE 3, 1971

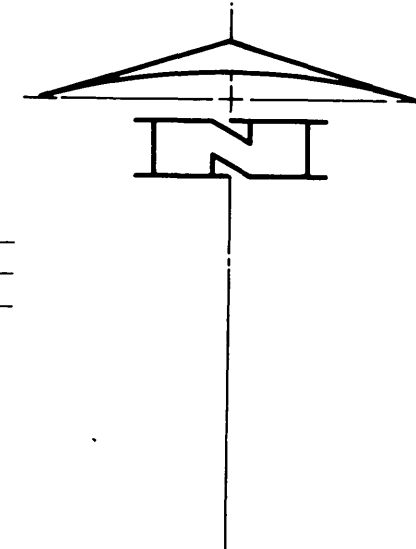
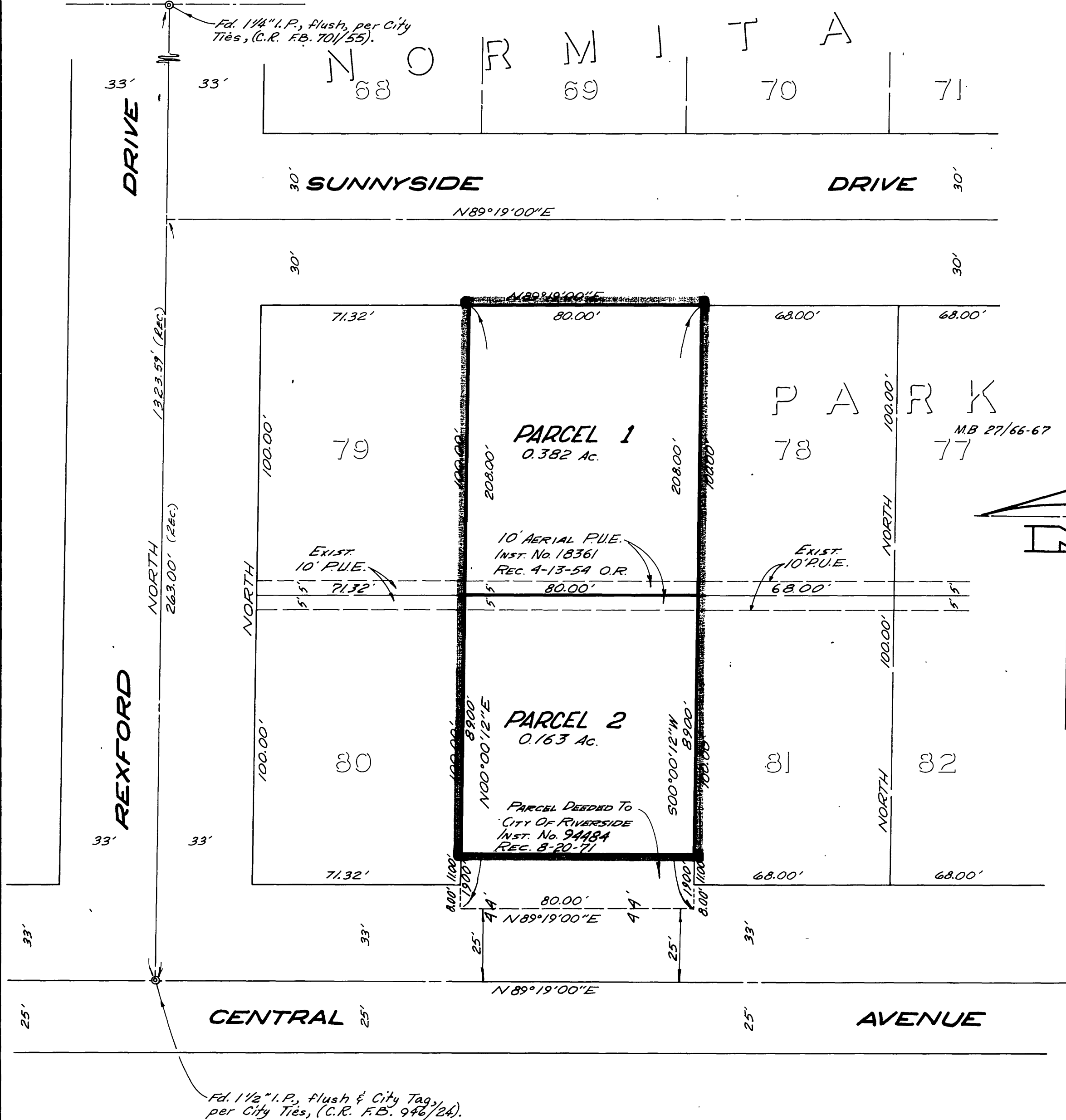
SURVEYOR'S CERTIFICATE

This map was prepared under my direction
and was compiled from record data in
conformance with the requirements of the
Subdivision Map Act at the request of
REUEL A. MINTON on April 27, 1971. I hereby
certify that it conforms to the approved
tentative map and the conditions of
approval thereof and that all provisions of
applicable State Law and Local Ordinances
have been complied with.

ROBERT S. KIPPER, R.C.E. 13699

DEWEY AVENUE

Fd. 1 1/4" I.P., Flush, per City
Ties, (C.R. F.B. 70/55).



Fd. 1 1/2" I.P., Flush & City Tag,
per City Ties, (C.R. F.B. 946/24).

PM 4/89