

PM 5/75

# PARCEL MAP

IN THE CITY OF RIVERSIDE  
 RIVERSIDE COUNTY, CALIFORNIA  
 OF A PORTION OF LOT 7, BLOCK "F" OF ARLINGTON  
 HEIGHTS, MAP BOOK 2, PAGE 12, RECORDS OF RIVERSIDE  
 COUNTY, CALIFORNIA. SEC. 2, T. 3 S., R. 5 W., S.B.B. & M.  
 NOVEMBER 1971 SCALE: 1" = 100'

J. F. DAVIDSON ASSOCIATES

### RECORDER'S CERTIFICATE

Filed this 3 day of August  
 1972, at 1:20 P.M. in Book 5  
 of Parcel Maps at Page 75  
 at the request of the City Engineer  
 W.D. BALOGH, County Recorder  
 By William Blough  
 DEPUTY  
 No. 103564  
 Fee \$ 5.50

### CITY ENGINEER'S CERTIFICATE

This map has been examined this 30 day of Aug.  
 1972, for conformance with Title 18 of the Riverside  
 Municipal Code and with the requirements of Section  
 11575 of the Subdivision Map Act.  
 JAMES F. MARTINEK, City Engineer  
 By William D. Gardner, P.E.  
 TENTATIVE MAP APPROVED AUGUST 5, 1971

### SURVEYOR'S CERTIFICATE

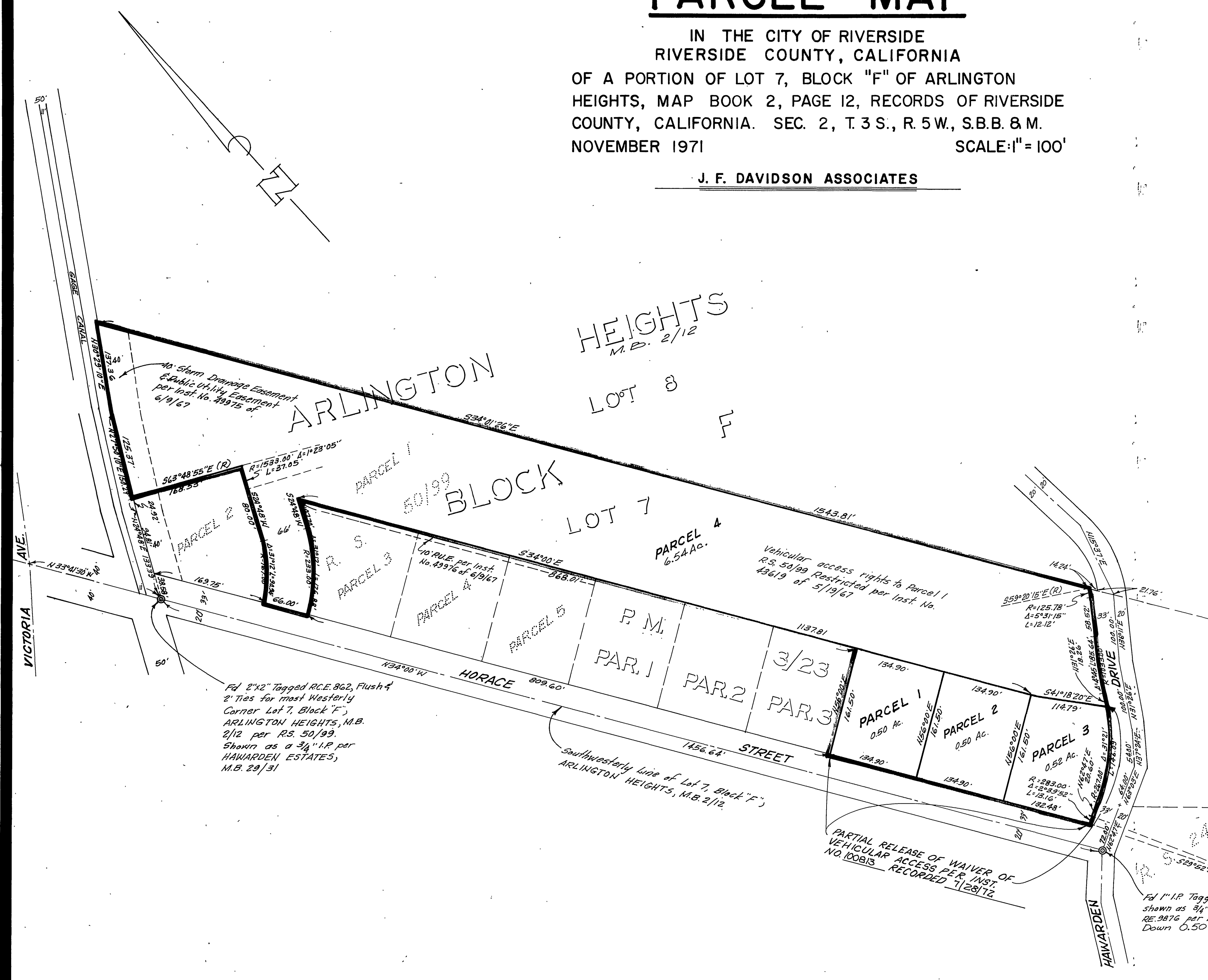
This map was prepared by me or under my direction  
 and was compiled from record data  
 in conformance with the requirements of the Subdivision  
 Map Act at the request of Calvert R. ERWIN  
 on July 7, 1971. I hereby certify that it conforms  
 to the approved Tentative Map and the conditions of  
 approval thereof; and that all provisions of applicable  
 state law and local ordinances have been complied with.  
Robert S. Kipper  
 ROBERT S. KIPPER, R.C.E. 13699

### BASIS OF BEARINGS

Bearings are based on the Southwesterly line of  
 Lot 7, Block "F" of ARLINGTON HEIGHTS, as being  
 N34°00'W as shown by map on file in M.B. 2/12,  
 Records of Riverside County, California.

### MONUMENT NOTE

⊙ Indicates Monuments Found as Noted



PM 5/75