

PARCEL MAP

IN THE CITY OF RIVERSIDE
RIVERSIDE COUNTY, CALIFORNIA

OF LOTS 42, 43 AND 44, VICTORIA PARK ADDITION,
M.B. 7/18, RECORDS OF RIVERSIDE COUNTY, CALIFORNIA.
IN SECTION 36, T.2 S., R.5 W., S.B.B. & M.

AUGUST 1972

SCALE: 1"=50'

J. F. DAVIDSON ASSOCIATES

3126 TENTH ST. RIVERSIDE, CALIFORNIA



RECORDER'S CERTIFICATE

Filed this 15 day of September
1972, at 10:15 P.M. in Book 6
of Parcel Maps at Page 10
at the request of the City Engineer

W.D. BALOGH, County Recorder
By Harold C. Beale
DEPUTY

No. 123745

Fee \$ 5.00

CITY ENGINEER'S CERTIFICATE

This map has been examined this 31st day of Aug.
1972, for conformance with Title 18 of the Riverside
Municipal Code and with the requirements of Section
11575 of the Subdivision Map Act.

JAMES F. MARTINEK, City Engineer

TENTATIVE MAP APPROVED Aug. 17, 1972
DATE

SURVEYOR'S CERTIFICATE

This map was prepared by me or under my direction
and was compiled from record data
in conformance with the requirements of the Subdivision
Map Act at the request of Phillip Black
on July 17, 1972. I hereby certify that it conforms
to the approved Tentative Map and the conditions of
approval thereof; and that all provisions of applicable
state law and local ordinances have been complied with

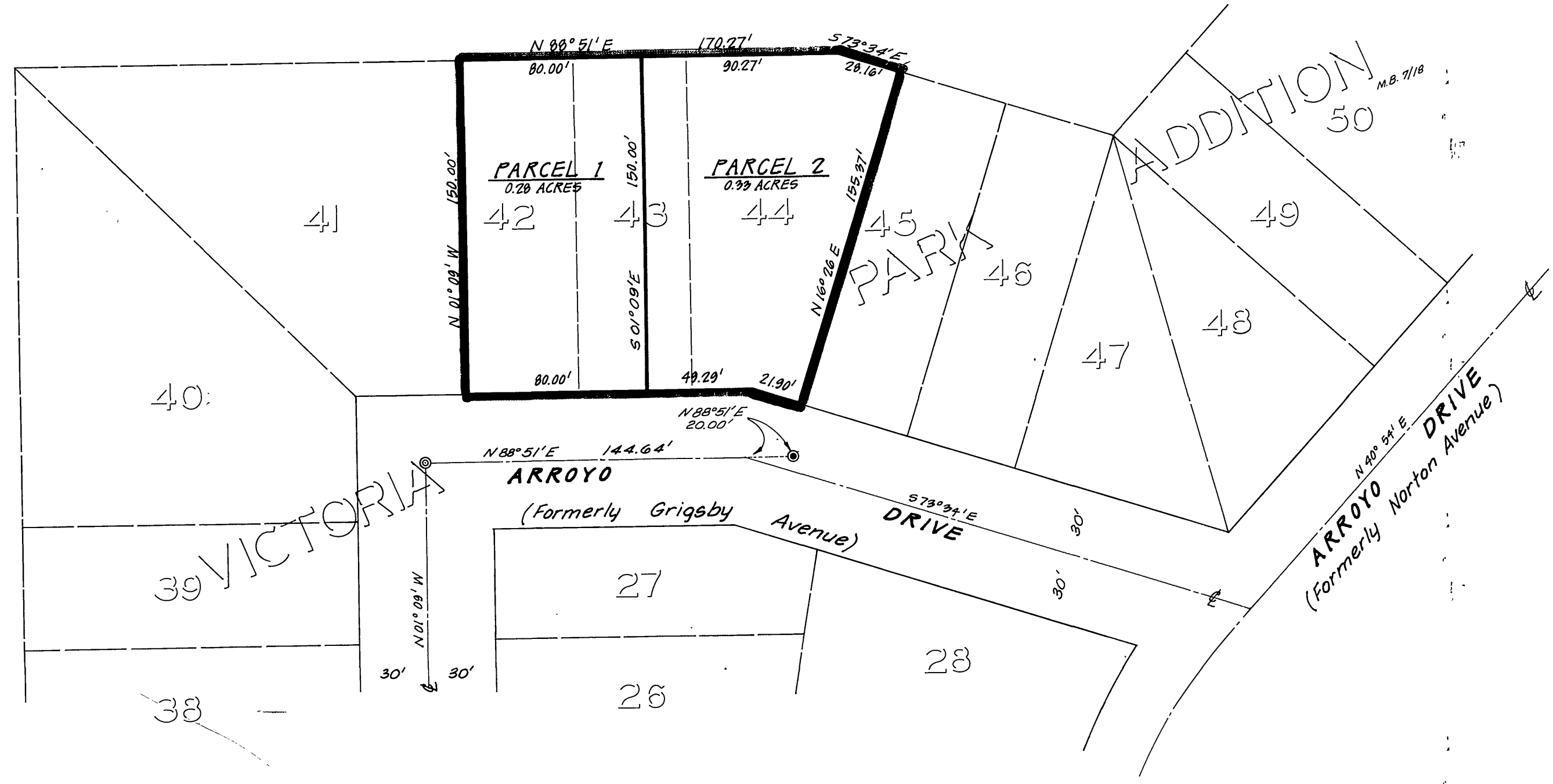
Robert S. Kipper
ROBERT S. KIPPER, R.C.E. 13699

BASIS OF BEARINGS

Bearings are based on the centerline of
Arroyo Drive as being N88°51'E as shown
on Victoria Park Addition, M.B. 7/18, Records
of Riverside County, California.

MONUMENT NOTE

- ⊙ Indicates x point in street centerline per ties in C.R.F.B. 50/23, No monuments set since this points falls on manhole cover.
- ⊙ Indicates found bolt, down 0.1', per C.R.F.B. 50/51



PM 6/10

PM 6/10