

INDEX MAP

IN THE COUNTY OF RIVERSIDE PARCEL MAP NO. 4806

SHOWING THE DIVISION OF BLOCKS 9, 10, 17, & 18 OF THE ALESSANDRO TRACT AS SHOWN BY MAP ON FILE IN BOOK 6, AT PAGE 13 OF MAPS, RECORDS OF SAN BERNARDINO COUNTY, CALIFORNIA, IN SECTION 17, T.3S., R.4W., S.B.B. & M.

DECEMBER, 1972
ALBERT A. WEBB ASSOCIATES, INC. - CIVIL ENGINEERS - RIVERSIDE, CALIFORNIA
RECORDER'S CERTIFICATE

Filed this 21 day of December, 1972, at 10:20 A.M. in Book 7 of Parcel Maps, of pages 8, 9, 10, 11, 12 of the request of the County Surveyor.

Fee \$ 13.00
No. 168362
W.D. Balogh, County Recorder
By Laura P. Vaughn Deputy

SURVEYOR'S CERTIFICATE

This map was prepared by me or under my direction and is based upon a field survey in conformance with the requirements of the Subdivision Map Act of the request of Southern California Financial Corporation in November, 1972. I hereby certify that it conforms to the approved tentative map and the conditions of approval thereof and that all provisions of applicable State law and local Ordinances have been complied with.

Ernest N. Webb, R.C.E. 9876
Ernest N. Webb

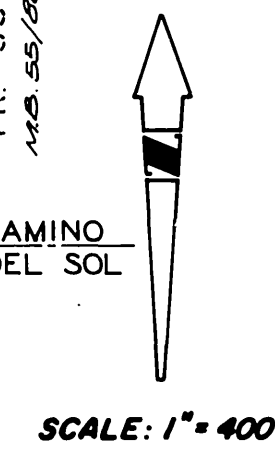
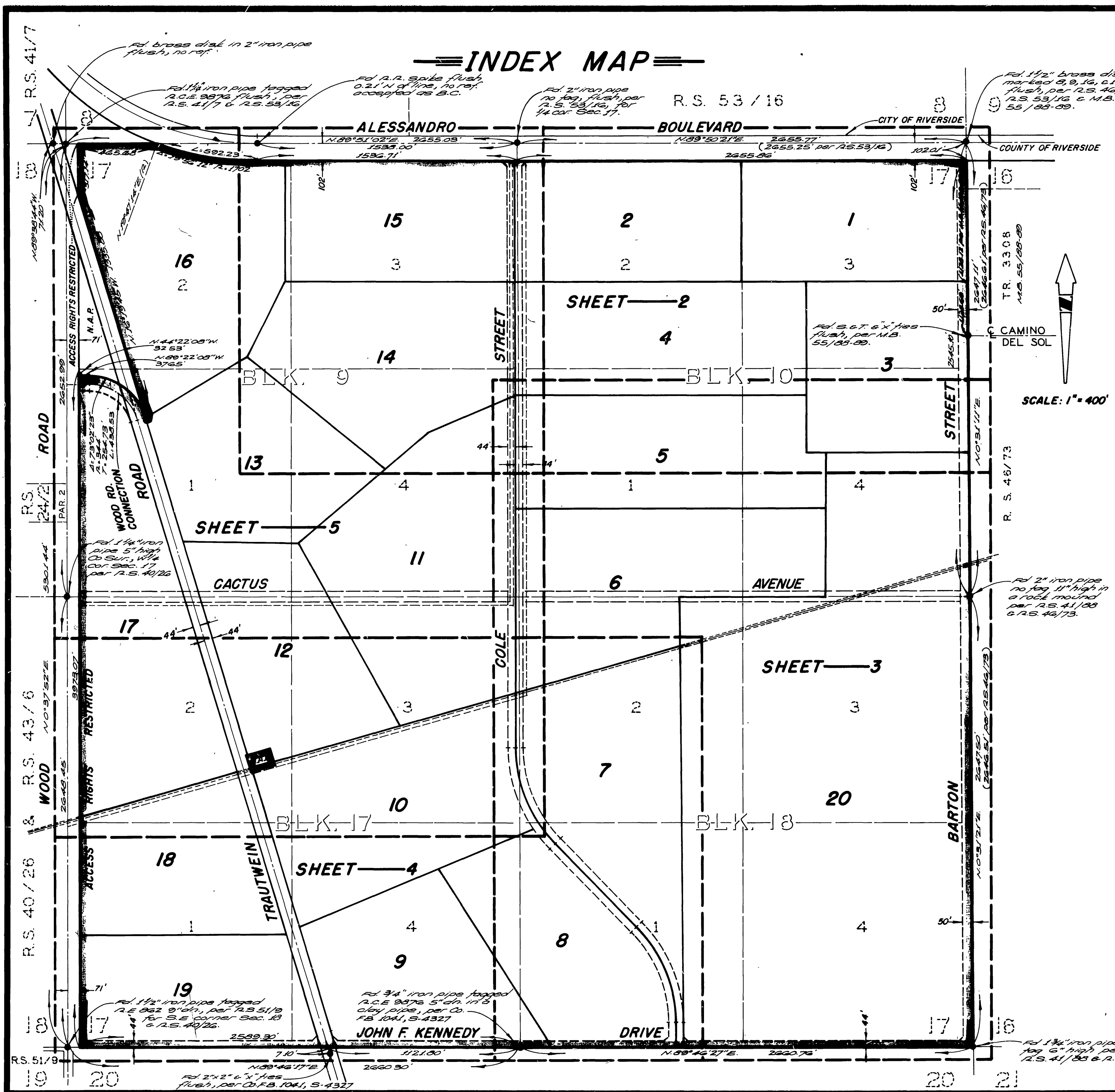
SURVEYOR'S NOTES

1. Basis of bearings is the North line of the N.W. 1/4 of Section 17, T.3S., R.4W., S.B.B. & M. taken as N.89°50'21"E. Bearings shown hereon are referred to California Coordinate System, Zone 6. Distances are ground distances. Said bearing is shown by Alignment Plat No. 818-00 and Coordinate File No. C.14, on file in the office of the Riverside County Surveyor.
2. Found monuments as noted at all points shown thus ●.
3. Set 1" iron pipe flagged R.C.E. 9876, 6" down of all lot corners unless otherwise noted.

COUNTY SURVEYOR'S CERTIFICATE

This map has been examined this 21st day of December, 1972, for conformance with the requirements of Section 11575 of the Subdivision Map Act.


B. Douglas Powell, County Surveyor
By William H. Hunter Deputy



P.M.B. 7/8

P.M.B. 7/8

See Sheet 1 for Basis of Bearings, Monument Notes, Index Map, and Tract Boundary

All watercourses marked thus  have a drainage area of greater than 40 acres and must be kept free of buildings, obstructions and encroachments by land fill.

IN THE COUNTY OF RIVERSIDE PARCEL MAP NO. 4806

SHOWING THE DIVISION OF BLOCKS 9, 10, 17, & 18 OF THE ALESSANDRO TRACT AS SHOWN BY MAP ON FILE IN BOOK 6, AT PAGE 13 OF MAPS, RECORDS OF SAN BERNARDINO COUNTY, CALIFORNIA, IN SECTION 17, T.3S., R.4W., S.B.B. & M.

DECEMBER, 1972

ALBERT A. WEBB ASSOCIATES, INC. - CIVIL ENGINEERS - RIVERSIDE, CALIFORNIA

SHEET 2 OF 5 SHEETS

R. S. 53 / 16

SCALE: 1"=200'



SEE SHEET NO. 5

P.M.B. 7/9

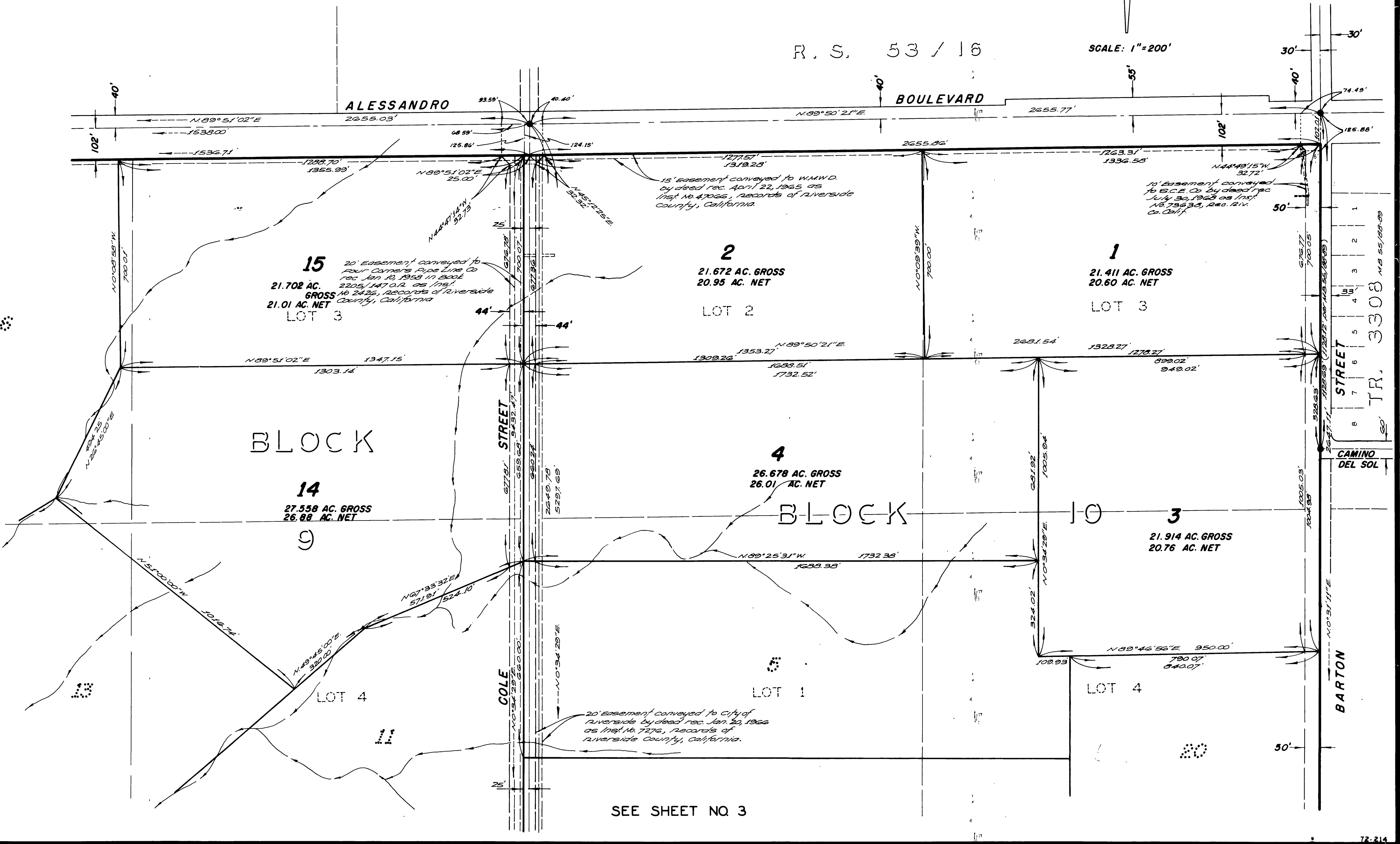
SEE SHEET NO 3

72-214

PM 7/9

P.M.B. 7/9

P.M. 7/9



IN THE COUNTY OF RIVERSIDE

PARCEL MAP NO. 4806

SHEET 3 OF 5 SHEETS

SHOWING THE DIVISION OF BLOCKS 5, 10, 17, & 18 OF THE ALESSANDRO TRACT AS SHOWN BY MAP IN FILE IN BOOK 6, AT PAGE 13, OF MAPS, RECORDS OF SAN BERNARDINO COUNTY, CALIFORNIA, IN SECTION 17, T.3 S., R.4 W., S.B.B. & M.

DECEMBER, 1972

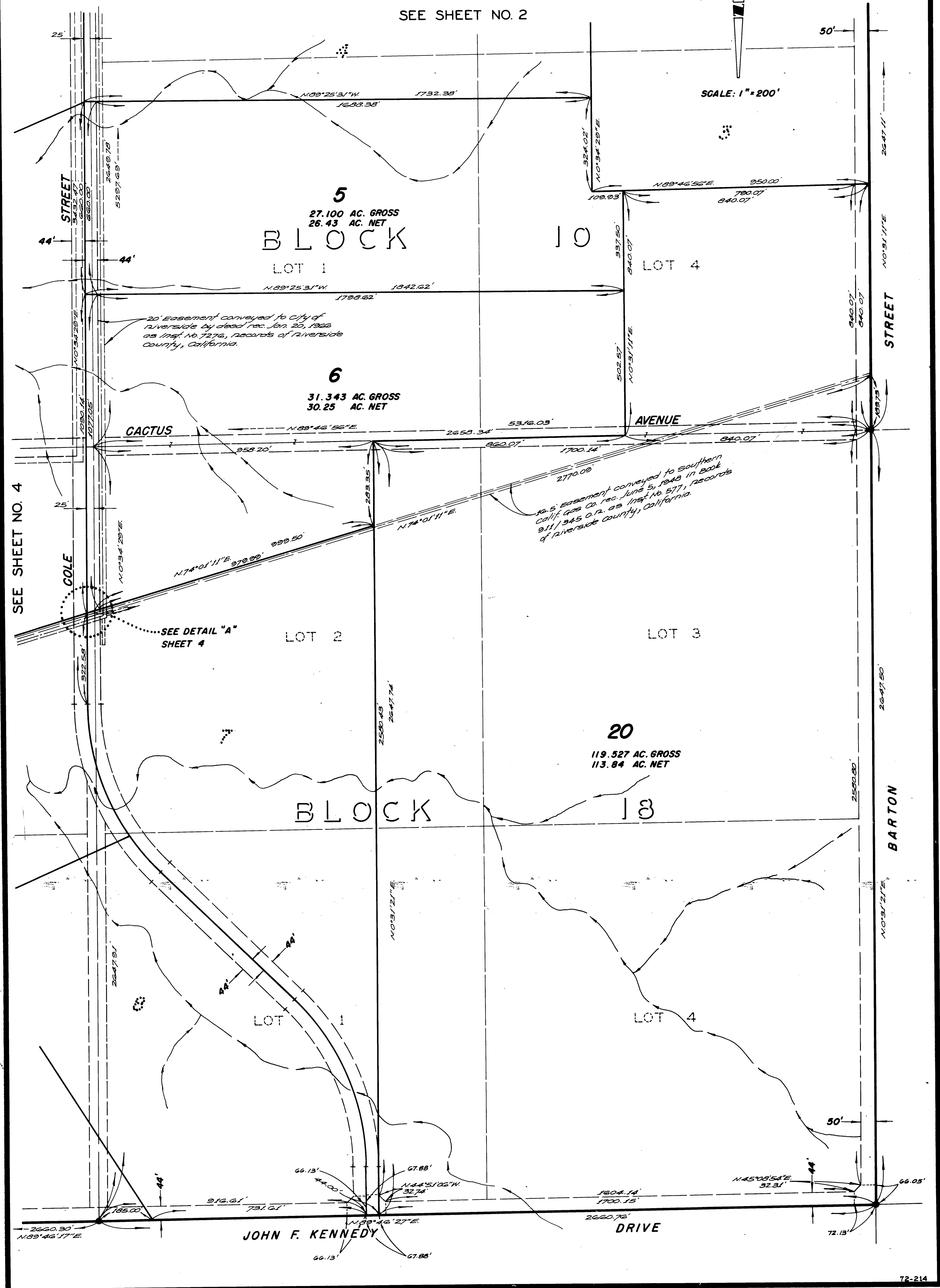
ALBERT A. WEBB ASSOCIATES, INC. - CIVIL ENGINEERS - RIVERSIDE, CALIFORNIA

See Sheet 1 for Basis of Bearings, Monument Notes, Index Map, and Tract Boundary.

All watercourses marked thus have a drainage area of greater than 40 acres and must be kept free of buildings, obstructions and encroachment by land fill.

SEE SHEET NO. 2

SCALE: 1" = 200'



PM 7/11

IN THE COUNTY OF RIVERSIDE PARCEL MAP NO. 4806

SHOWING THE DIVISION OF BLOCKS 9, 10, 17, & 18 OF THE ALESSANDRO TRACT AS SHOWN BY MAP ON FILE IN BOOK 6, AT PAGE 13 OF MAPS, RECORDS OF SAN BERNARDINO COUNTY, CALIFORNIA, IN SECTION 17, T.3 S., R.4 W., S.B.B.M.

DECEMBER, 1972
ALBERT A. WEBB ASSOCIATES, INC. - CIVIL ENGINEERS - RIVERSIDE, CALIFORNIA

SEE SHEET NO. 5

R. S. 40 / 26 & R. S. 43 / 6
PARCEL 2

PARCEL 1

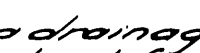
R. S. 51 / 9

P.M.B. 7 / 11

SEE SHEET NO. 3

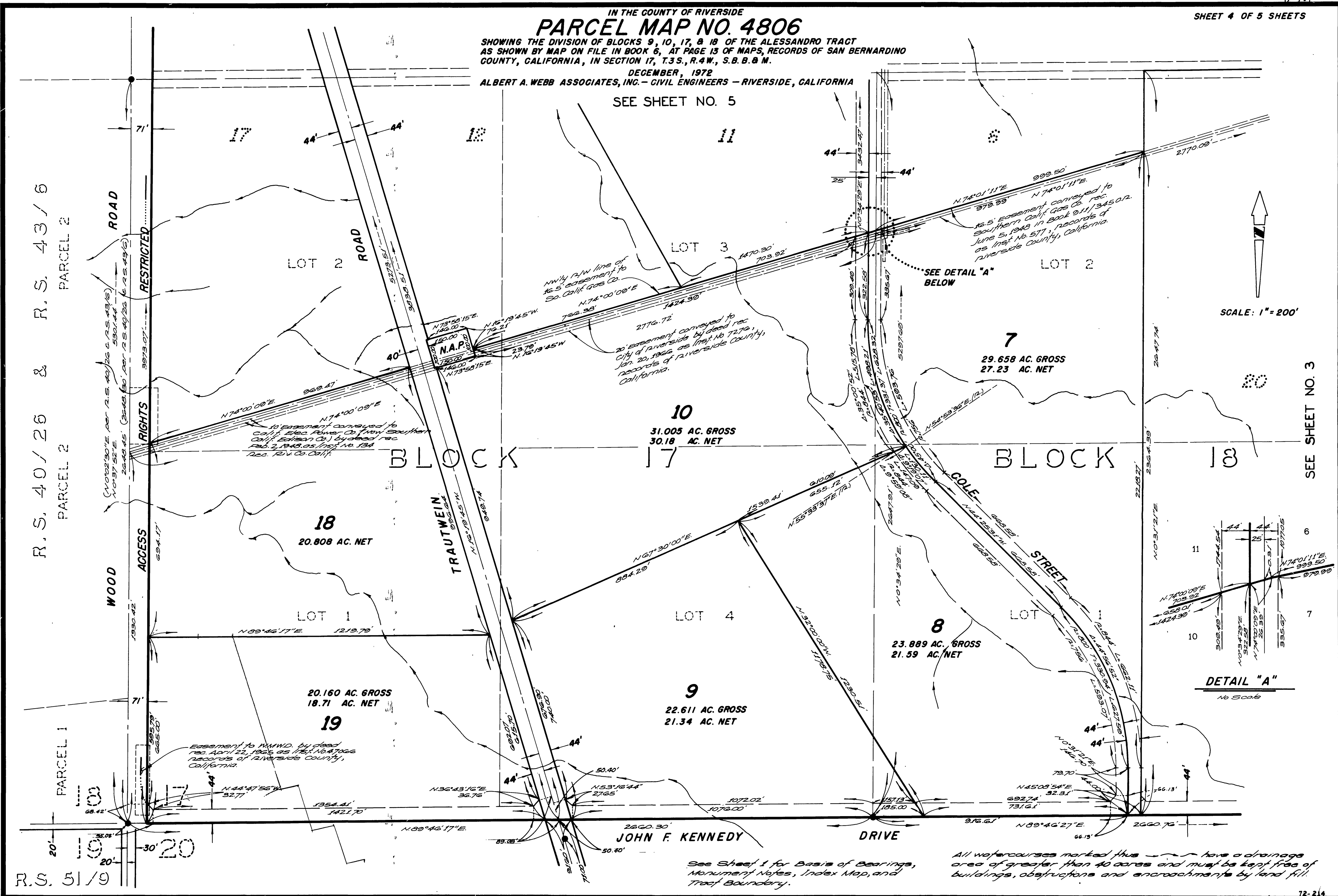
SCALE: 1" = 200'

DETAIL "A"
No Scale

All watercourses marked thus  have a drainage area of greater than 40 acres and must be kept free of buildings, obstructions and encroachments by land fill.

See Sheet 1 for Basis of Bearings, Monument Notes, Index Map, and Tract Boundary.

2 PM 7/11

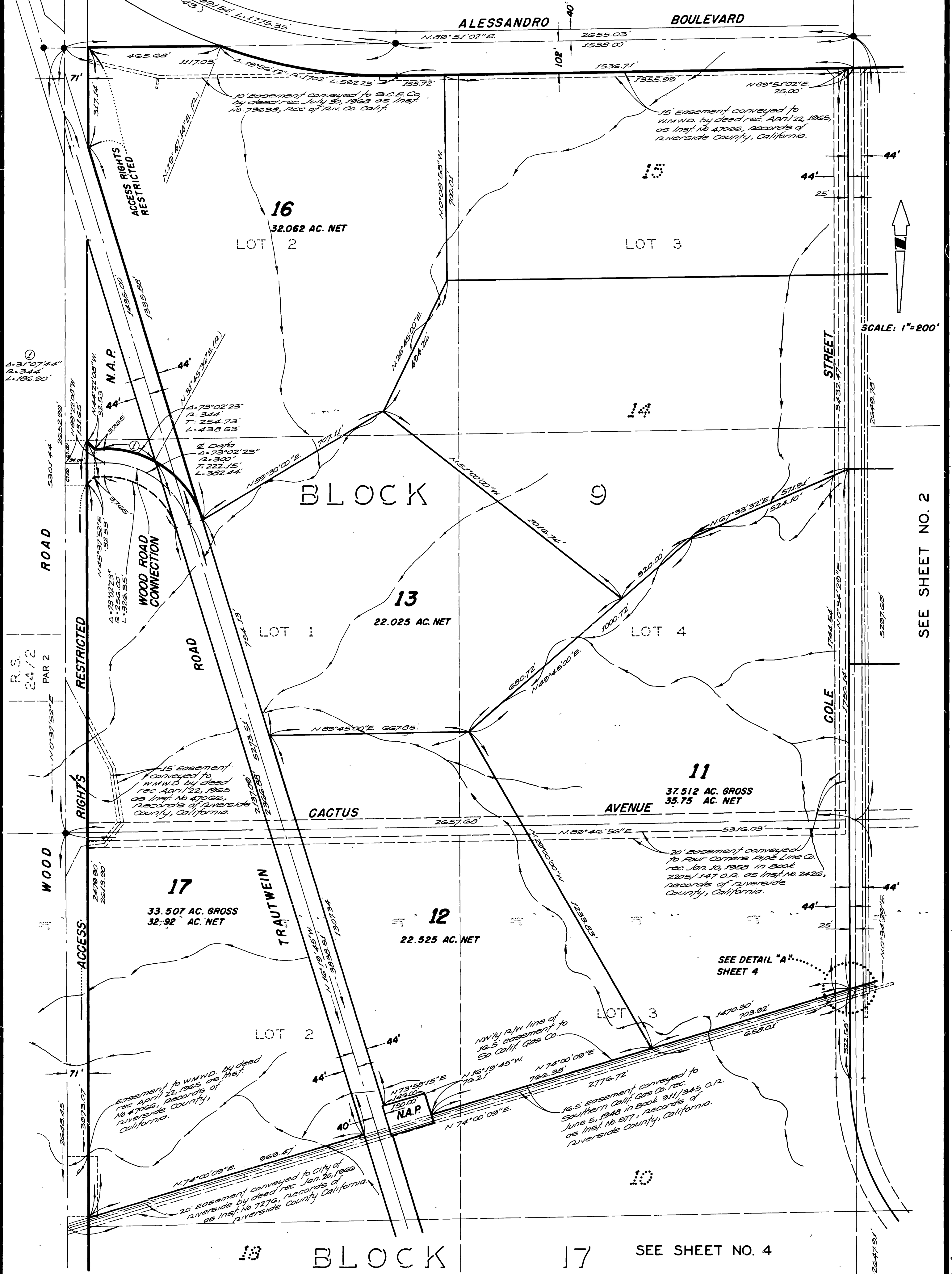


IN THE COUNTY OF RIVERSIDE PARCEL MAP NO. 4806

SHOWING THE DIVISION OF BLOCKS 9, 10, 17, & 18 OF THE ALESSANDRO TRACT AS SHOWN BY MAP ON FILE IN BOOK 6, AT PAGE 13 OF MAPS, RECORDS OF SAN BERNARDINO COUNTY, CALIFORNIA, IN SECTION 17, T.3S., R.4W., S.B.B. & M.

DECEMBER, 1972

ALBERT A. WEBB ASSOCIATES, INC. - CIVIL ENGINEERS - RIVERSIDE, CALIFORNIA



SEE SHEET NO. 2

SEE DETAIL "A"
SHEET 4

SEE SHEET NO. 4

See Sheets 1, 2 for Basis of Bearings, Monument Notes, Index Map, and Tract Boundary.

All watercourses marked thus have a drainage area of greater than 40 acres and must be kept free of buildings, obstructions and encroachment by land fill.

P.M.B. 7/12

P.M.B. 7/12