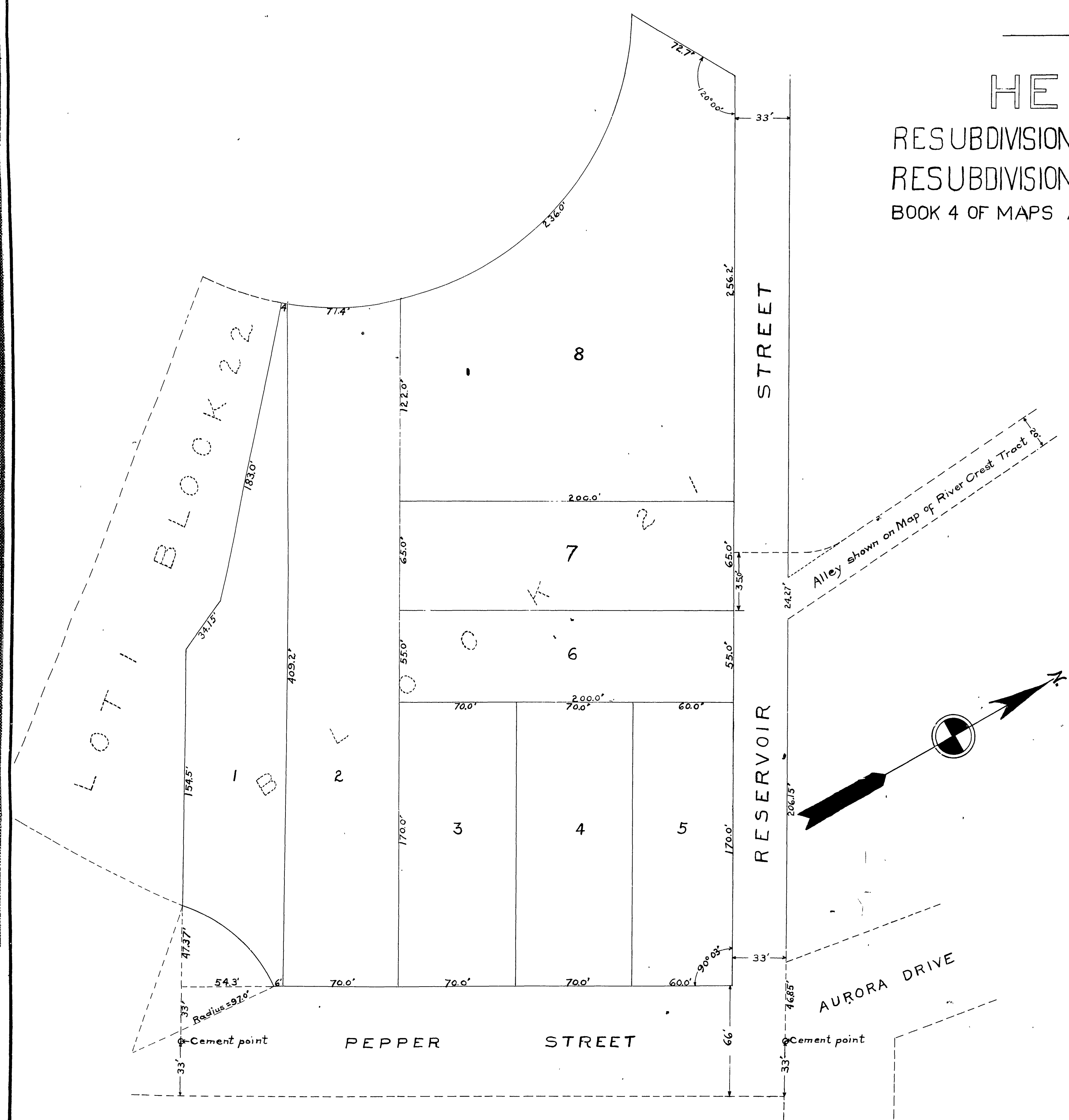


—MAP OF— HENRY WIRT'S

RESUBDIVISION OF LOTS 1,2 & 3 OF BLOCK 21 OF A
RESUBDIVISION OF RUBIDOUX HEIGHTS AS FILED IN
BOOK 4 OF MAPS AT PAGE 80, RECORDS OF RIVERSIDE COUNTY.

SCALE, 1 INCH = 40 FEET.



I hereby certify that this map is a correct
representation of the survey made by me in
March, 1909.

W. P. Campbell
Licensed Surveyor.

FILED
APR 7 1909
I. E. LOGAN, Recorder,
By _____ Deputy