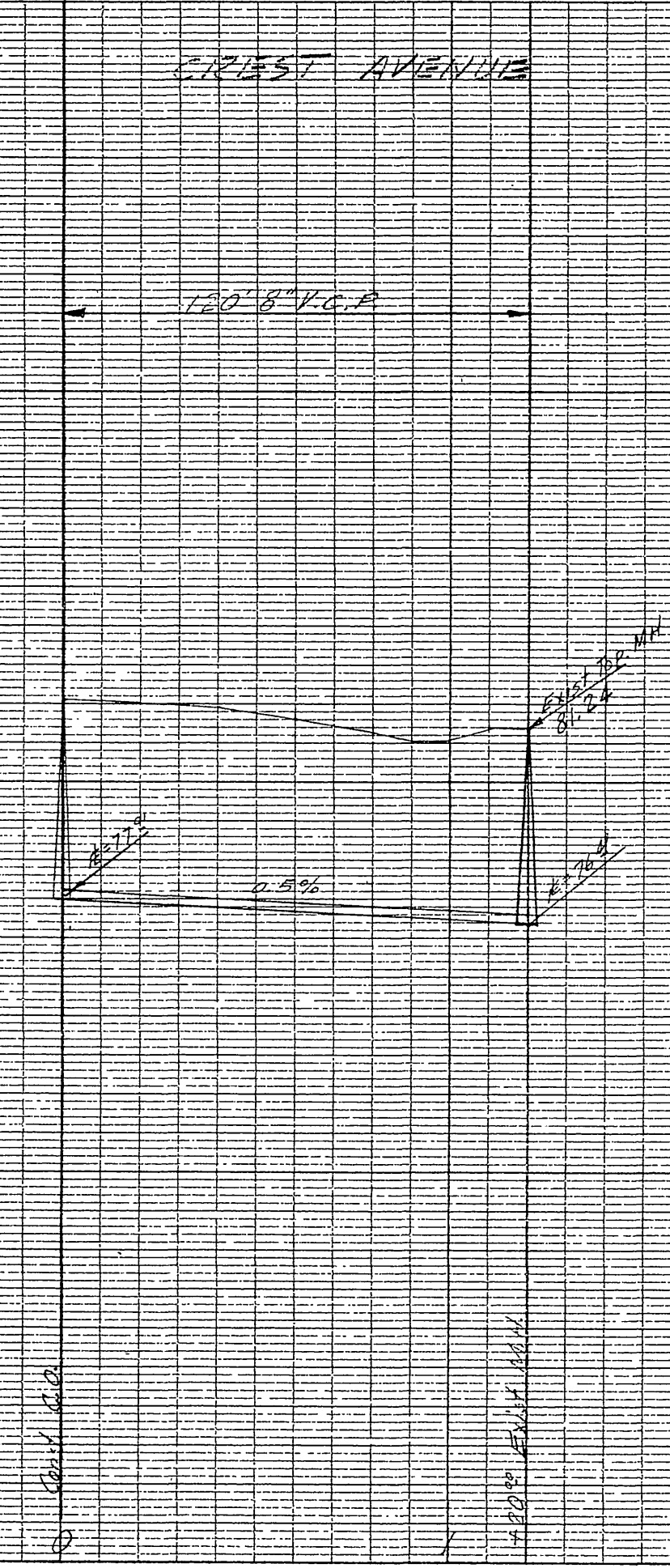
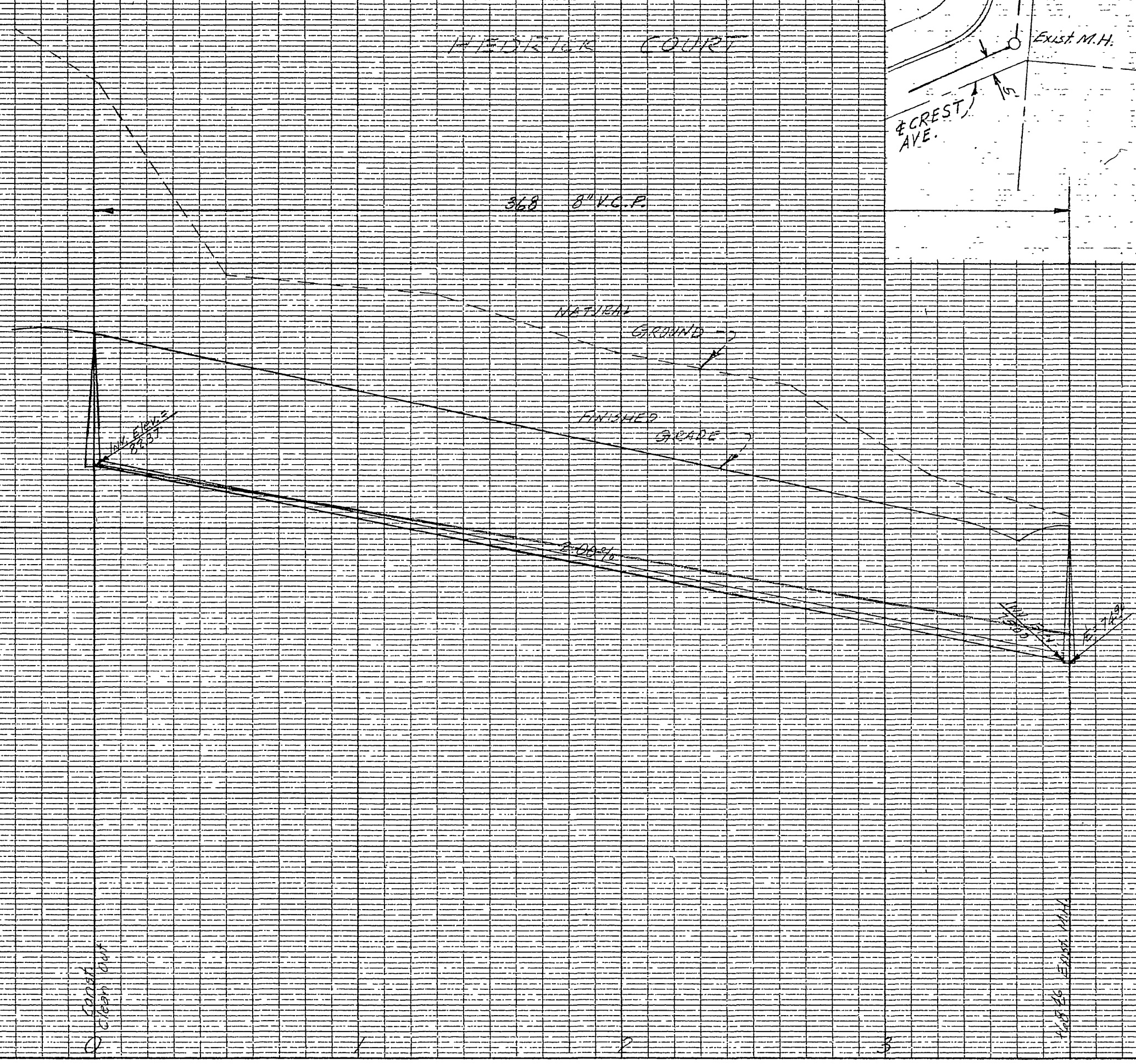
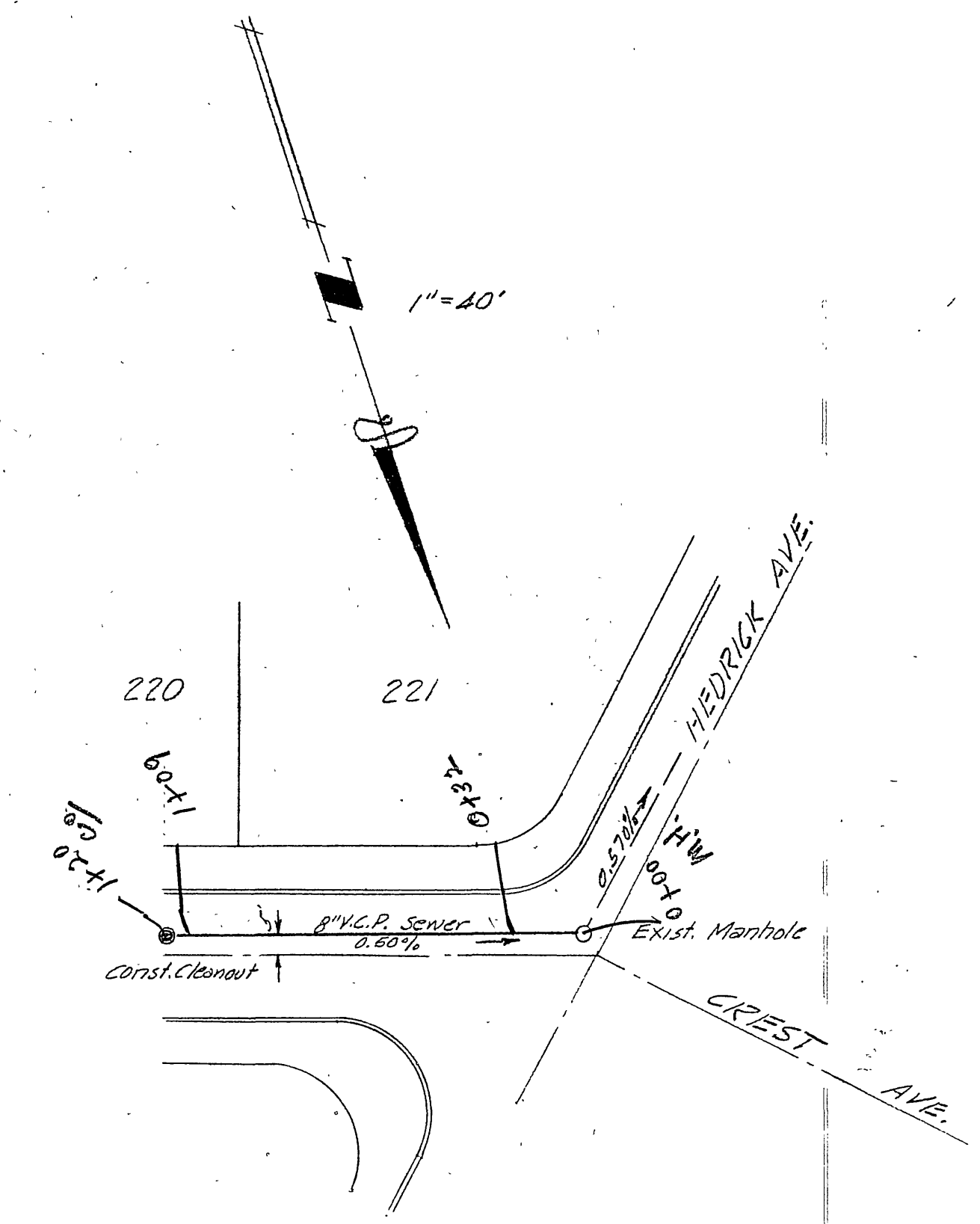
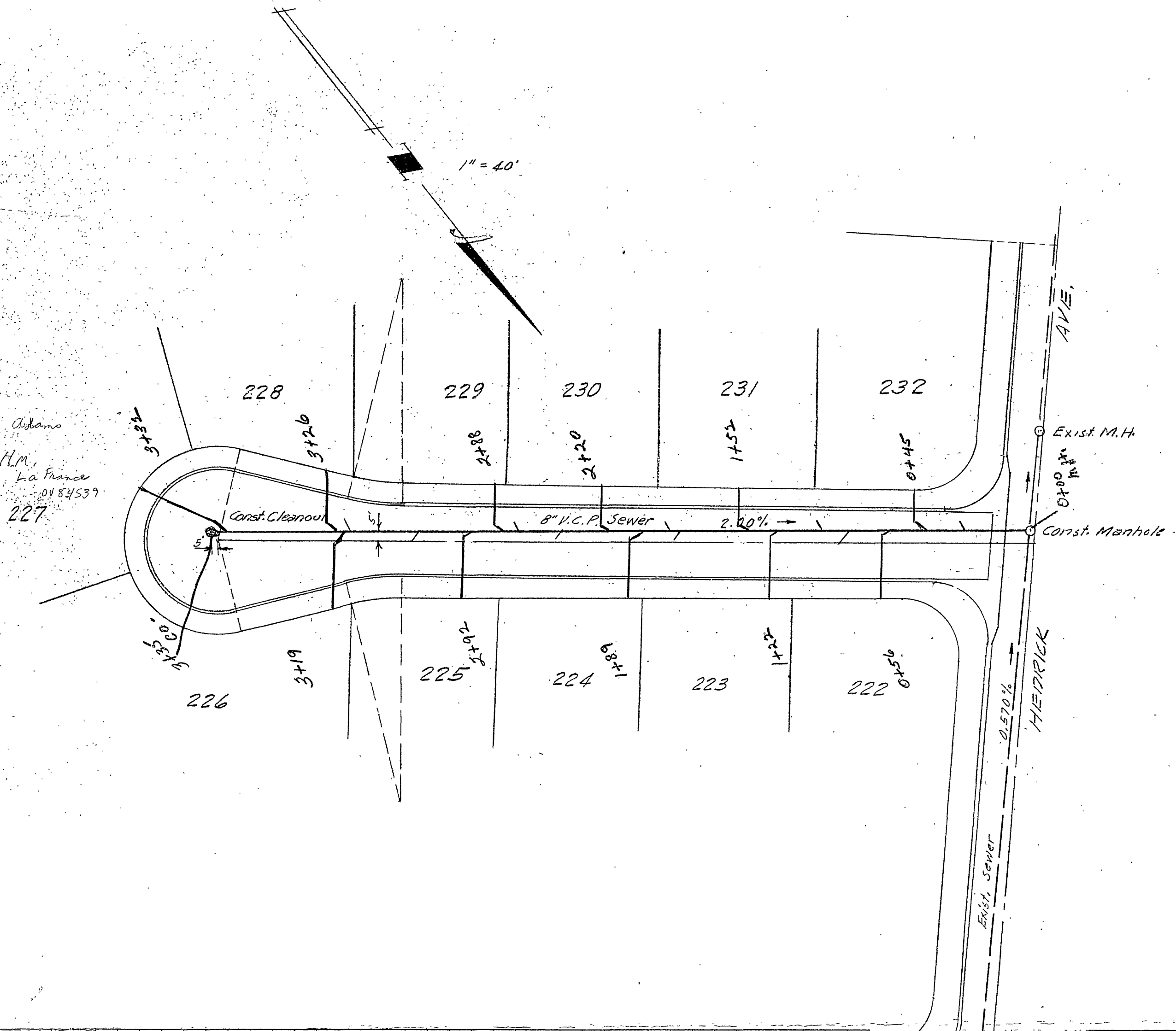


File No.	SEWER PLANS SIERRA DOWNS G	
Drawn By		
Checked By		
Approval Recommended: <i>W. E. Bryant RE4562</i>	Approved: Date: 9-27-58	Drawing No.
W. R. MAXWELL Land Surveying and Construction Layout 350 W. Base Line San Bernardino, Calif.	LIS 2788	Sheet 1 of 1
Scale: Horiz. 1" = 40', Vert. 1" = 4'	Specification No.:	

Approved By
For La Sierra Community Services District
1023 Hale Avenue
Arlington, Calif.

- QUANTITIES
- 1 Manhole
 - 2 Cleanout
 - 13 Wyes
 - 488' 8" V.C. Pipe
 - 390' 4" V.C.P. Lateral



CLIPPING, PROFILE PLAN PLATE A
CLEARPRINT PAPER CO.
MADE IN U.S.A.

CLIPPING, PROFILE PLAN PLATE A
CLEARPRINT PAPER CO.
MADE IN U.S.A.

SIERRA DOWNS UNIT NO. 6

BEING A SUBDIVISION OF LOT 11 AND A PORTION OF LOTS 12 AND 13, BLOCK 14, LA GRANADA TRACT AS RECORDED IN BOOK 12 OF MAPS, PAGES 42 TO 51, RECORDS OF RIVERSIDE COUNTY, CALIFORNIA.

W.R. MAXWELL SURVEYOR

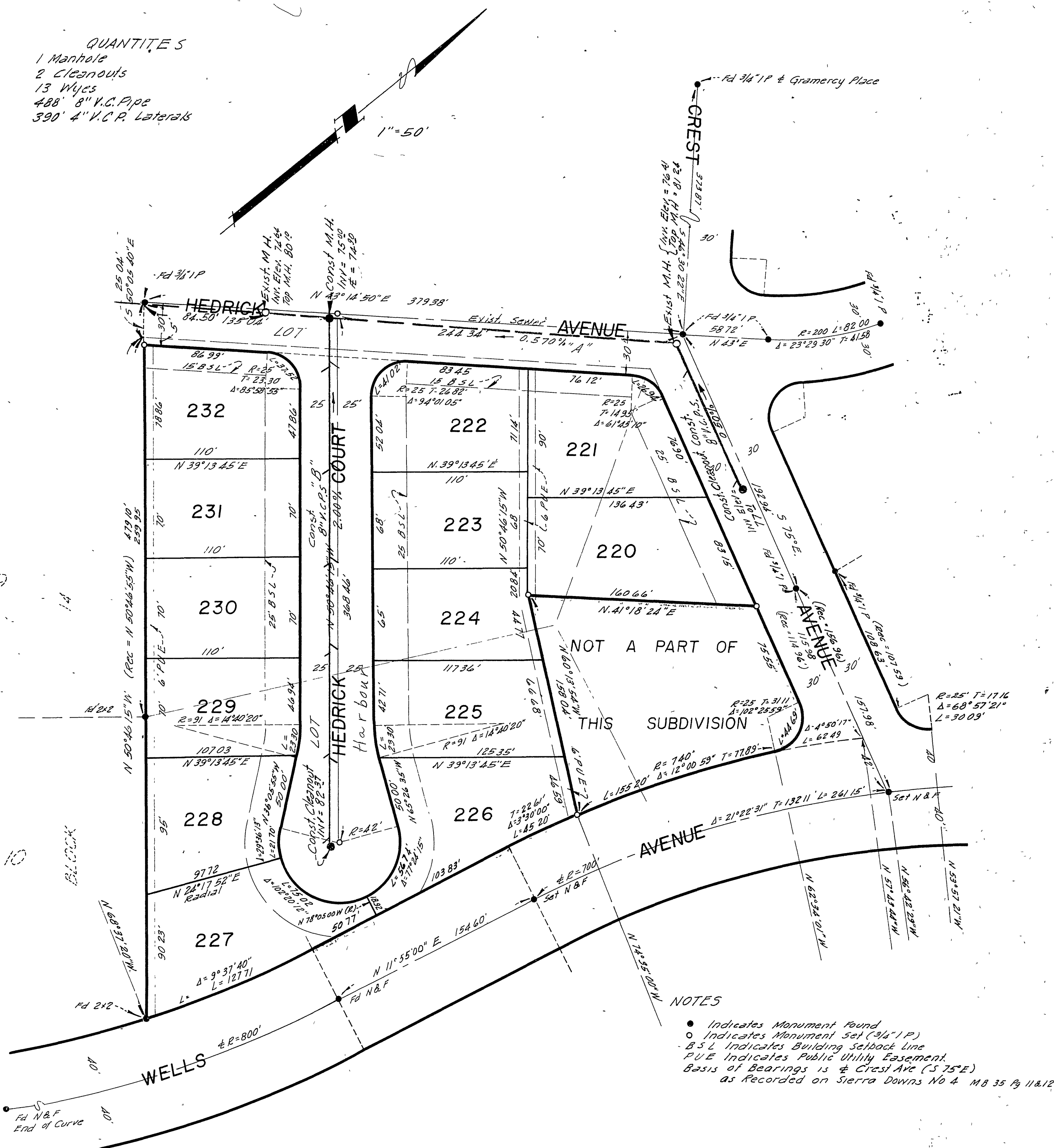
SEWER MAP

AUGUST 1958

S-495A

- QUANTITIES
- 1 Manhole
 - 2 Cleanouts
 - 13 Wyes
 - 488' 8" V.C. Pipe
 - 390' 4" V.C.P. Laterals

1" = 50'



NOTES

- Indicates Monument Found
- Indicates Monument Set (3/4" I.P.)
- B.S.L. Indicates Building Setback Line
- P.U.E. Indicates Public Utility Easement
- Basis of Bearings is ± Crest Ave (S 75° E)
- as Recorded on Sierra Downs No 4, MB 35 Pg 11 & 12