

14 BENCH MARK: 15
 (B.M. I) TOP OF 1 1/2" I.P. BRASS CAP AT STATION 51+90.00 (4 ST.) ELEV. 731.25
 (B.M. II) TOP OF 1 1/2" I.P. BRASS CAP AT STATION 54+13.12 (4 ST.) ELEV. 811.06
 Eq. P.C. 1500 RAD. CURVE (SEE SHEET 2)

68

QUANTITY ESTIMATE

12" VITRIFIED CLAY PIPE	764 L.F.
10" VITRIFIED CLAY PIPE	800 L.F.
MANHOLE, STD. DWG. 500	6 EA.
8" VITRIFIED CLAY PIPE	700 L.F.

* AS BUILT 5-2-66 97107 HB

ALBERT A. WEBB ASSOCIATES
 CIVIL ENGINEERS
 RIVERSIDE, CALIFORNIA
 APPROVED BY *[Signature]* DATE 1/17/66
 R.E. No. 9876
 W.O. 65-373 FOR WHEELABRATOR CORP. F.B. 600

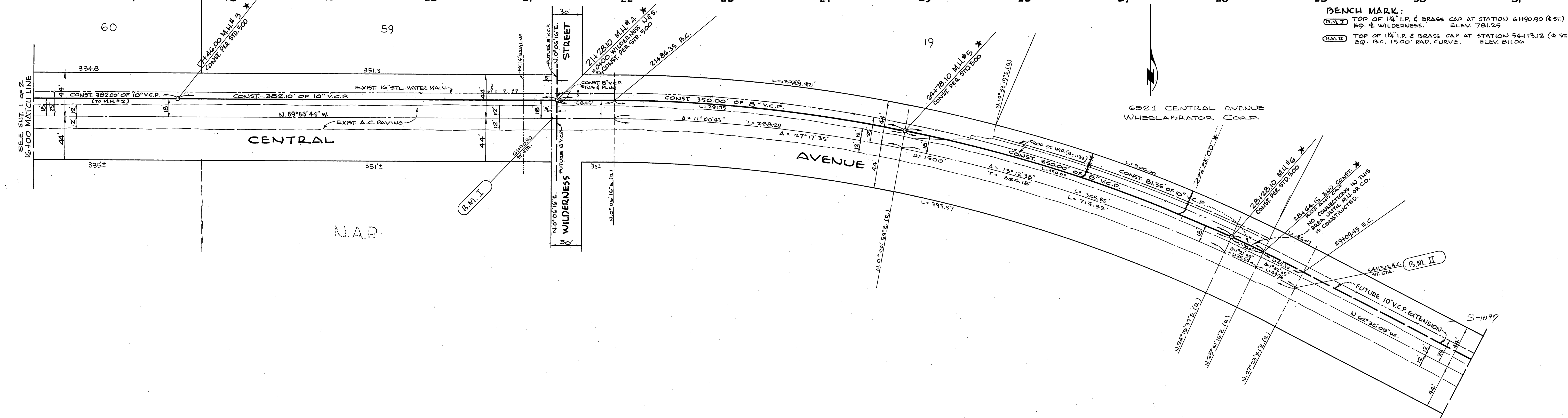
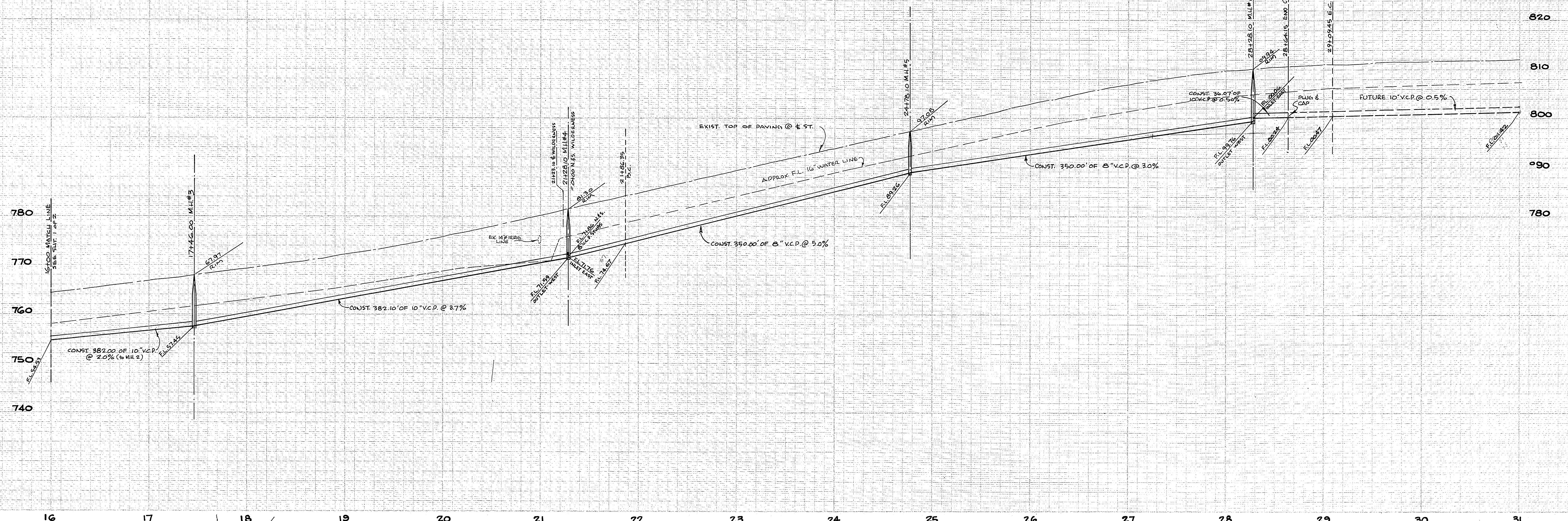
MARK	REVISIONS	APPR.	DATE

DESIGNED BY D.R.P. DRAWN BY D.R.P. CHECKED BY *[Signature]*

CITY OF RIVERSIDE, CALIFORNIA
 DEPARTMENT OF PUBLIC WORKS
 APPROVED BY *[Signature]* BY *[Signature]* DATE 2-8-66
 OFFICE ENGINEER WAG 2-8
 PARK DEPARTMENT
 TRAFFIC DIVISION
 ASSISTANT CITY ENG. *[Signature]*
 DATE 2-8-66

SEWER PLAN AND PROFILE
CENTRAL AVENUE
 INDUSTRIAL SEWER NO. 2
 ACORN STREET TO 736' EASTERLY
 OF WILDERNESS STREET.
 HORIZ. SCALE: 1" = 50'
 VERT. SCALE: 1" = 10'

PROJECT NO.
S-656
 SHEET 1 OF 2
 FILE NO. 65-373 B



BENCH MARK:
 (B.M. I) TOP OF 1 1/2\"/>

* AS BUILT 5-2-66 SP/10/146

ALBERT A. WEBB ASSOCIATES CIVIL ENGINEERS RIVERSIDE, CALIFORNIA APPROVED BY <i>[Signature]</i> DATE 1/7/66 R.E. No. 3876	CITY OF RIVERSIDE, CALIFORNIA DEPARTMENT OF PUBLIC WORKS APPROVED BY <i>[Signature]</i> DATE 2-8-66 DIRECTOR OF PUBLIC WORKS	PROJECT NO. S-656
		SHEET 2 OF 2 FILE NO. 65-373B
W.O. 65-373 FOR WHEELABRATOR CORP. F.B. 600	DESIGNED BY D.B.B. DRAWN BY D.B.B. CHECKED BY <i>[Signature]</i>	HORIZ. SCALE: 1" = 50' VERT. SCALE: 1" = 10'