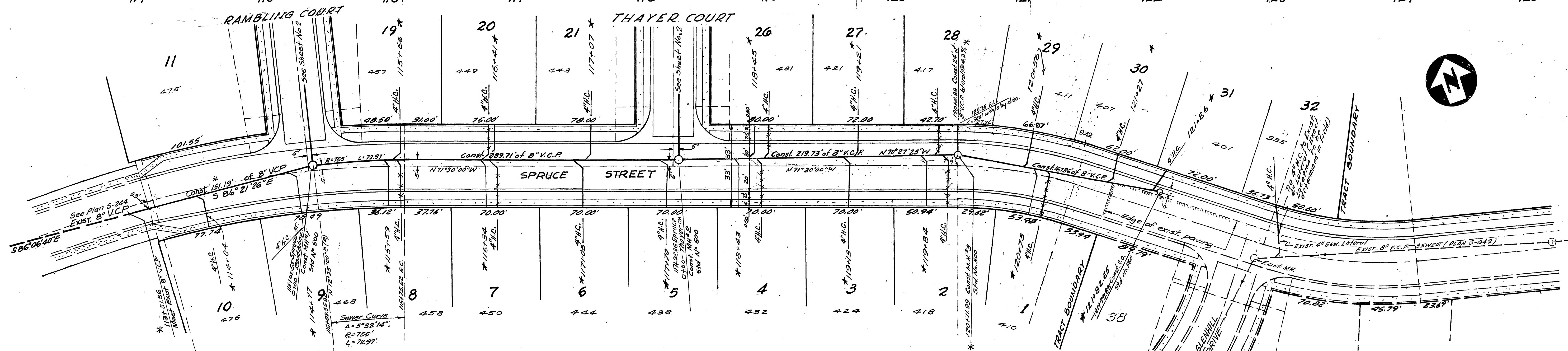


**PROFILES**  
 Scale Horiz. 1" = 40'  
 Vert. 1" = 8'



- GENERAL NOTES:**
- All construction shall be in accordance with the City of Riverside Department of Public Works, Std. Specifications No. 401 and Std. Dwg. No. 5-244.
  - It shall be the responsibility of the contractor to clear the right-of-way in accordance with the provisions of the law as it affects road utility, grading, irrigation lines and appurtenances, and of no cost to the City.
  - Joints in vitrified clay pipe sewers shall conform to A.S.T.M. Std. C425-60T, or the latest revision thereof.
  - Pipe shall be bedded per Case I, Std. Dwg. No. 452, unless otherwise specified on Plan.
  - Location of Wyes and Laterals to be determined in the field.
  - All stubs and laterals to be constructed in accordance with Std. Dwg. No. 502. Stubs shall be plugged and capped.

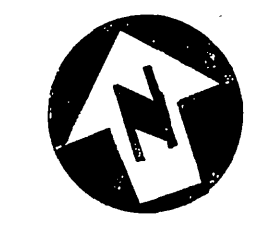
**PLAN**  
 Scale: 1" = 40'  
 Sta. 113+62.86 to Sta. 121+75.03

ESTIMATE OF QUANTITIES		
NO.	DESCRIPTION	QUANTITY
1	8" V.C.P.	1376 LF
2	6" H.C.P.	70 LF
3	2" V.C.P.	1,100 LF
4	WYES 8" V.C.P. - 29Ea. 6" V.C.P. - 2Ea.	31 Ea.
5	M.H. STD. No. 500	6 Ea.
6	C.O. STD. No. 560	1 Ea.
7	PAVEMENT REPLACEMENT (2' wide)	72 SF

Bench Marks:  
 P.K. nail in N.E. curb return at Sugarloaf Dr.  
 & Massachusetts Ave. per City R.B. 5-1 page 38.  
 Elev. = 1098.014

Lead and Tack on center of curb return S.W.  
 corner of Massachusetts Ave. and Flanders Rd.  
 Elev. = 1151.59.

\* AS BUILT 3-20-67 K.S. 26

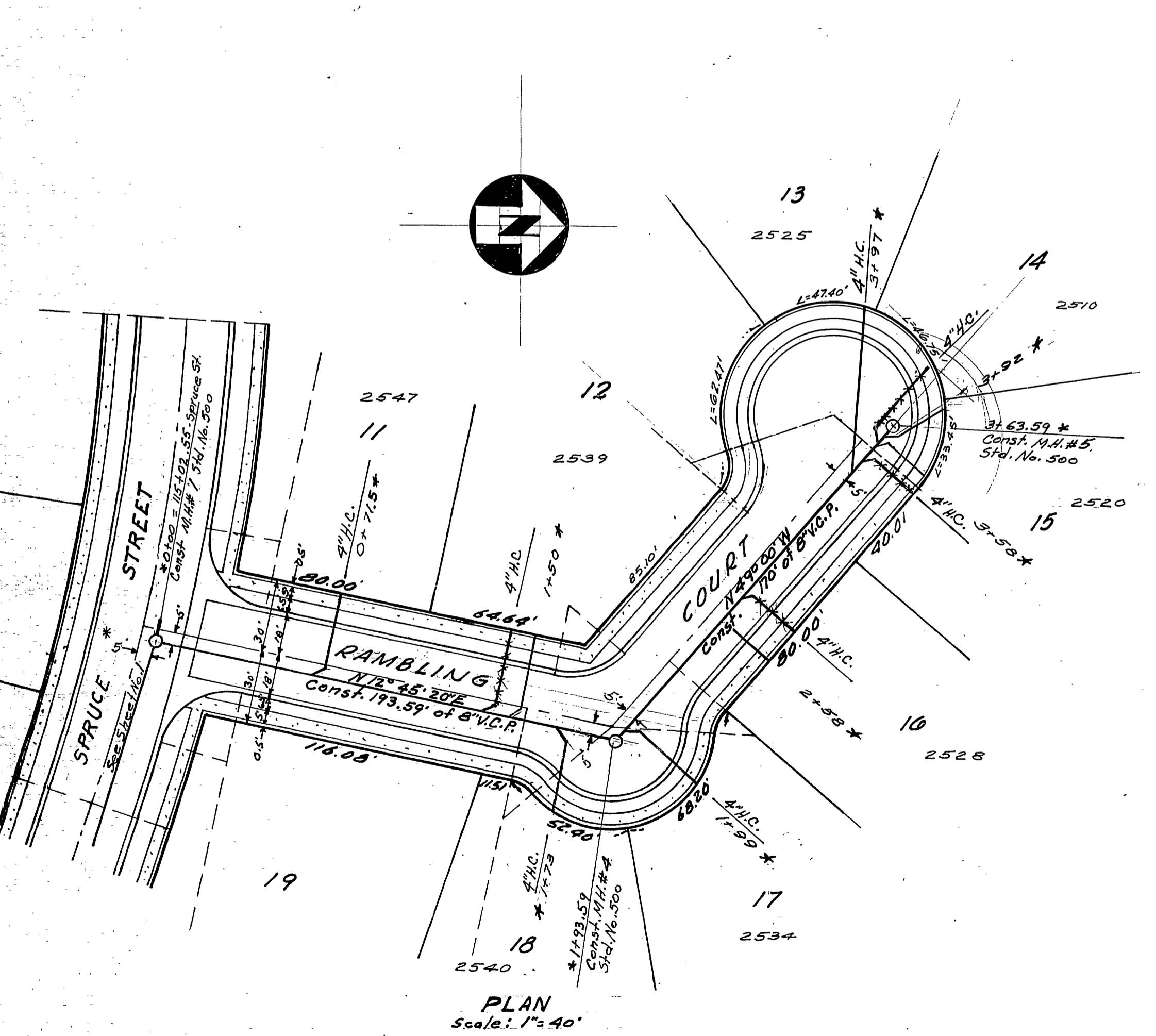
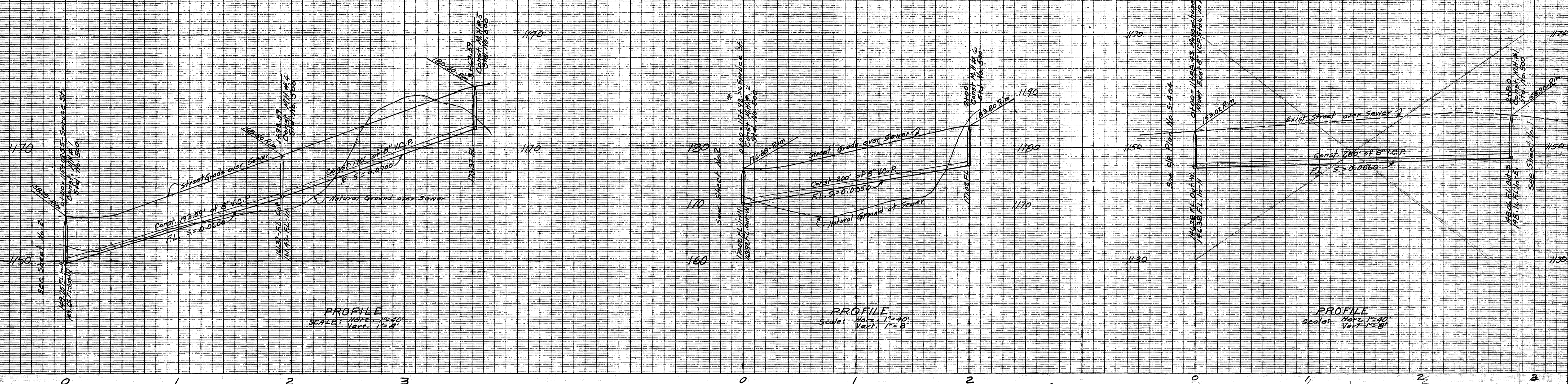


**CRAWLEY & HAWKINS**  
 SURVEYORS AND ENGINEERS  
 Riverside, California  
 Approved: *George O. Crawley* Field Bk. 65  
 R.E. No. 9455 Date 3-22-66  
 70-158

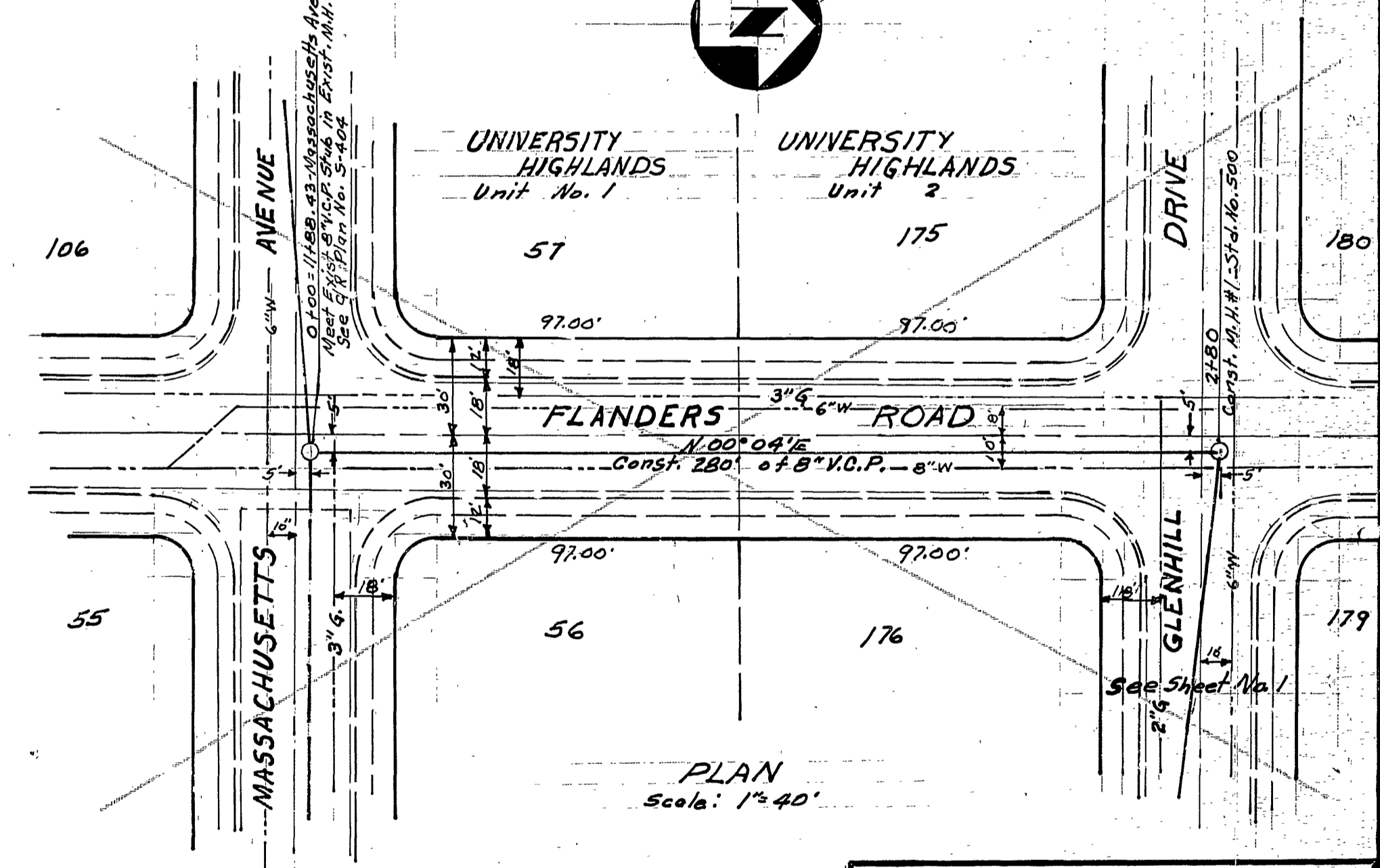
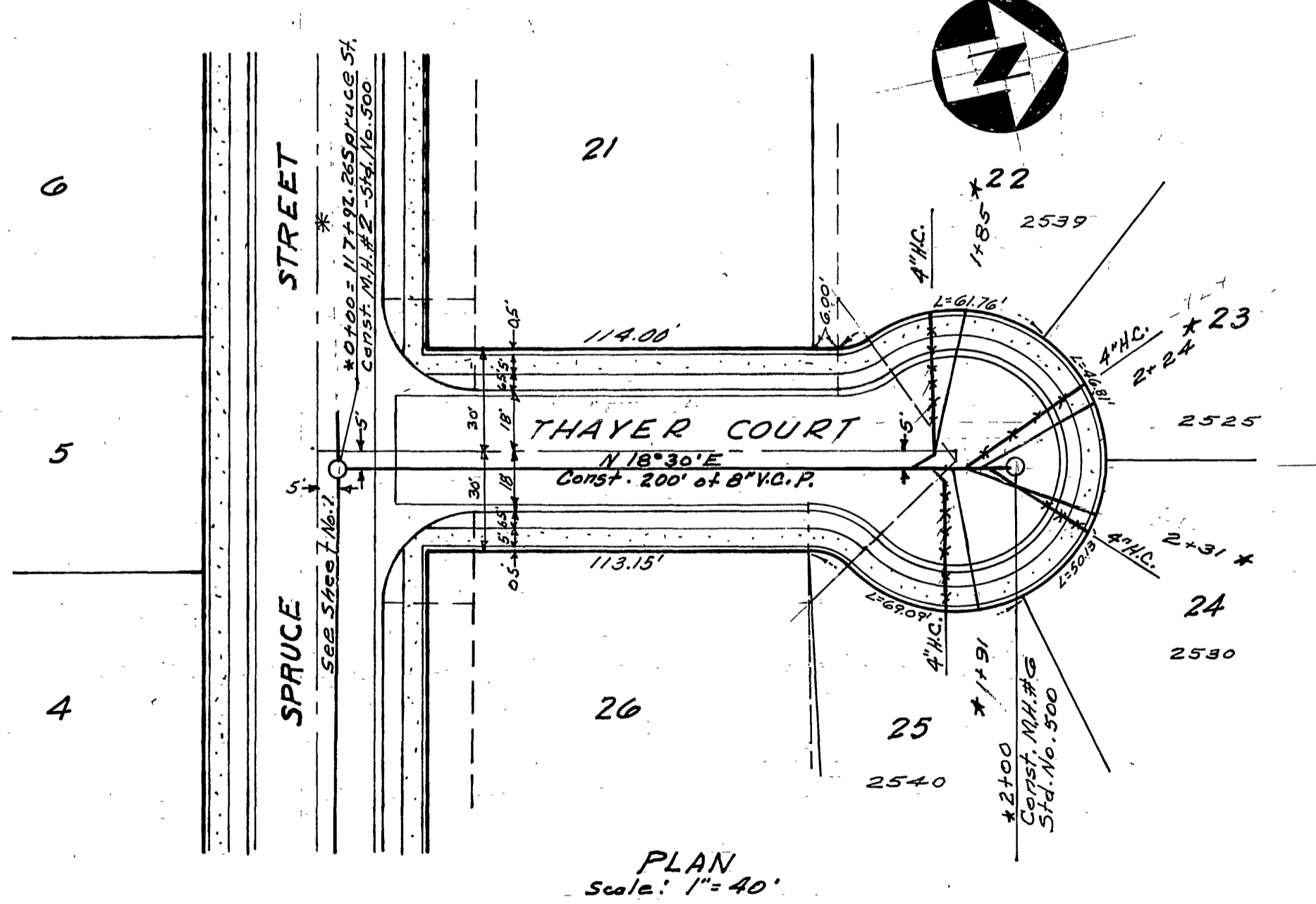
REVISIONS		
MARK	DATE	DESCRIPTION
	11-22-66	Changed alignment Spruce St. from sheet 3492 to 3492B.
*	12-28-66	Added 8" laterals if needed per City R.B. 5-1 page 38. See notes by George O. Crawley.

CITY OF RIVERSIDE, CALIFORNIA  
 DEPARTMENT OF PUBLIC WORKS  
 SEWER PLAN AND PROFILE  
**TRACT NO. 3492**  
**SPRUCE STREET**  
 FROM 140' WLY OF RAMBLING CT.  
 TO GLENHILL DRIVE

DESIGNED BY <i>L.M.</i>	SUBMITTED BY <i>George O. Crawley</i>	APPROVED BY <i>George O. Crawley</i>	PROJ. NO. 5-667
DRAWN BY <i>L.M.</i>	PARK DEPT.	TRAFFIC DIV.	DIRECTOR OF PUBLIC WORKS
CHECKED BY <i>L.M.</i>	RECOMMENDED BY <i>George O. Crawley</i>	DATE 12-28-66	SHEET 1 OF 2



AS BUILT 3-7-67 K.S.



Bench Marks:  
 R.K. nail in N.E. curb return at Sugarleaf Dr. & Massachusetts Ave. per City F.B. 5-7, page 38. Elev. = 1099.04.  
 Lead & Tack on center of curb return S.W. corner of Massachusetts Ave. and Flanders Rd. Elev. = 1151.59.

<b>CRAWLEY &amp; HAWKINS</b> ENGINEERS & SURVEYORS Riverside, California Approved: <i>George O. Crawley</i> Date 3-22-66 (R.E. No. 9455)		
CITY OF RIVERSIDE, CALIFORNIA DEPARTMENT OF PUBLIC WORKS SEWER PLAN AND PROFILE <b>TRACT NO. 3492</b> <b>RAMBLING COURT</b> <b>THAYER COURT</b>		
MARK	DATE	DESCRIPTION
*	11-22-66	Rev. alignment on Spruce St. from C.C.R. George O. Crawley
DESIGNED BY: <i>George O. Crawley</i> DRAWN BY: <i>William B. Hawkins</i> CHECKED BY: <i>Henry Williams</i> SUBMITTED BY: <i>George O. Crawley</i> PARK DEPT. TRAFFIC DIV. APPROVED BY: <i>William B. Hawkins</i> DIRECTOR OF PUBLIC WORKS RECOMMENDED BY: <i>Henry Williams</i> DATE: 10-3-66 PROJ. NO. 5-667 SHEET 2 OF 2		