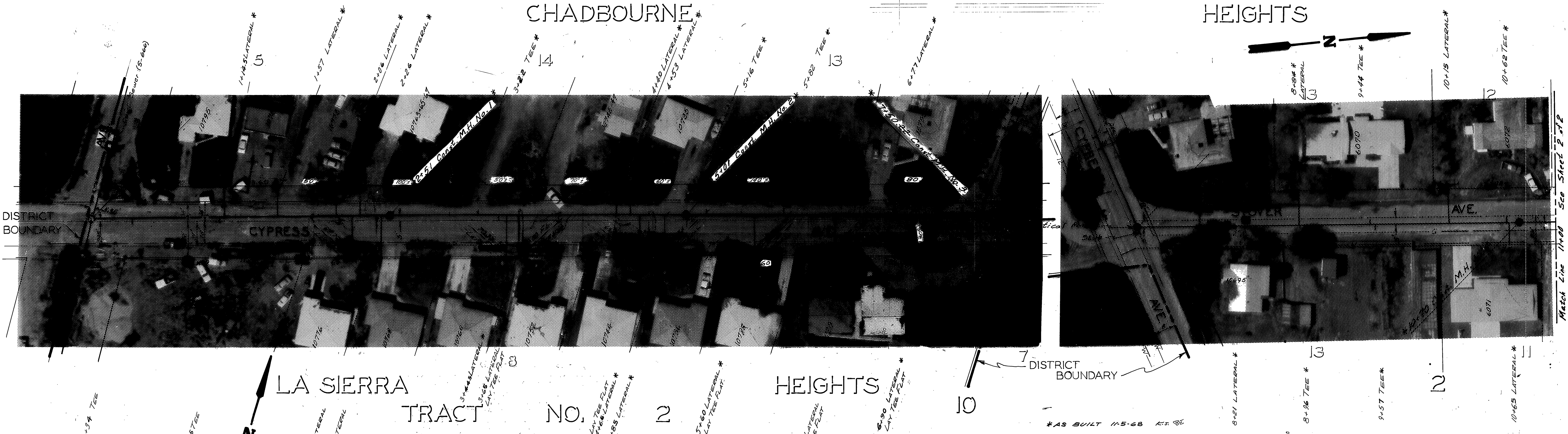


QUANTITY ESTIMATE

8" Vitrified Clay Pipe	2050 L.F.
4" Vitrified Clay Pipe	1083 L.F.
8" x 4" Tees	59 Ea.
Crushed Run Rock Bedding	3133 L.F.
Manholes Standard No. 500	7 Ea. G
Pavement Replacement	2591 L.F.

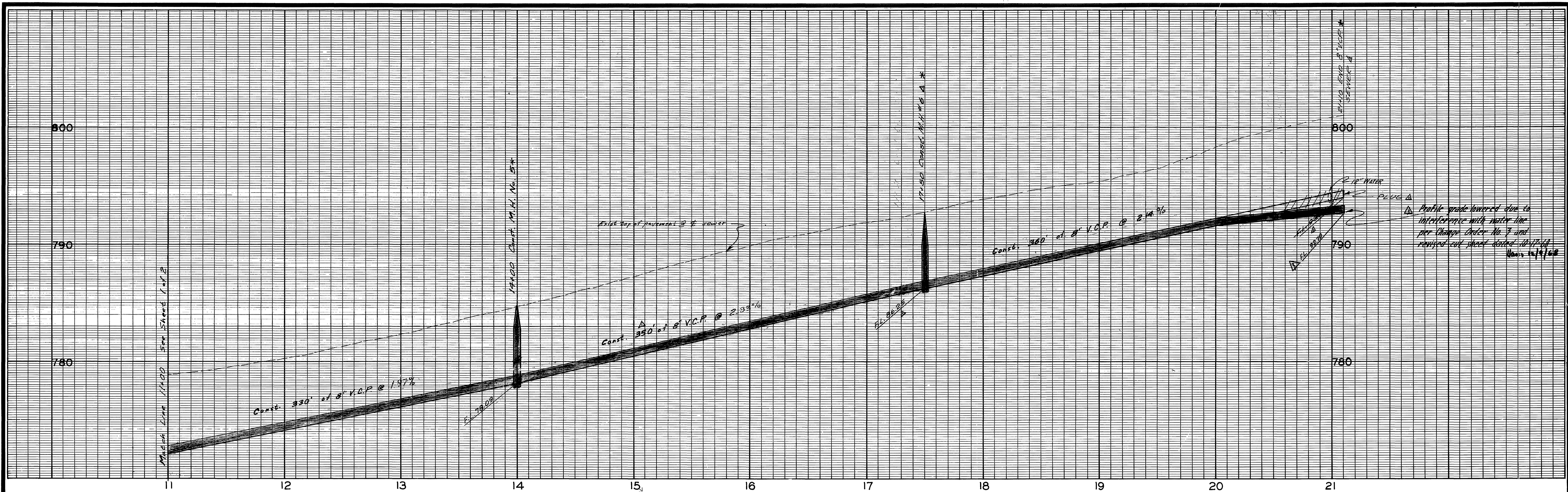
Bench Mark Elev. 760.46
 R.R. spike in pole no. 12743+E
 on N/W cor. Mitchell & Cypress
 (702/69)



GENERAL NOTES
 1. All manholes shall be constructed per City of Riverside Standard Drawing No. 500.
 2. SEWER LATERALS SHALL BE 4" V.C.P. CONSTRUCTED PER CITY OF RIVERSIDE STANDARD DRAWING NO. 562.

CITY OF RIVERSIDE, CALIFORNIA DEPARTMENT OF PUBLIC WORKS		STOVER AVE. ASSESSMENT DISTRICT		ACCOUNT NO. 6072
APPROVED BY	BY	DATE	APPROVED BY	S-691
PARK ENGINEER	[Signature]	7/26/66	DIRECTOR OF PUBLIC WORKS	
TRAFFIC DIVISION			DATE	SHEET 1 OF 2
DESIGNED BY	REVISIONS	APPR. DATE	ASSISTANT CITY ENGINEER	S.S. PROJECT NO.

FB 718/53



CHADBOURNE

11+07 TEE *
 11+87 LATERAL *
 12+05 LATERAL *
 12+23 LATERAL *
 13+28 LATERAL *
 14+00 C&G M.H. No. 15 *
 14+28 LATERAL *
 15+13 LATERAL *
 16+23 LATERAL *
 16+85 LATERAL *
 17+46 LATERAL *
 18+10 TEE *
 18+91 TEE *
 19+82 LATERAL *
 19+76 TEE *
 20+31 TEE *
 21+35 LATERAL *

STOVER AVE

HEIGHTS

10+96 TEE *
 11+45 LATERAL *
 12+07 TEE *
 12+50 LATERAL *
 13+05 TEE *
 13+50 LATERAL *
 14+10 TEE *
 14+81 TEE *
 15+58 LATERAL *
 16+22 LATERAL *
 16+92 LATERAL *
 18+09 LATERAL *
 19+44 LATERAL *
 19+63 LATERAL *
 20+23 TEE *

SEWER CURVE DATA
 R = 245'
 Δ = 20°07'55"
 T = 43.49'
 L = 86.09'

Future Sewer (See Plan S-720, SHEET 10)

Public grade lowered due to interference with water line per Change Order No. 3 and revised cut sheet dated 10/17/68

21+10.25 END 8" V.C.P. PLUS PIPE Δ *
 21+10.25 FUTURE M.H. #24 (See Plan S-720, SHEET 10)

DELETE 14+10 AND EXTEND SEWER TO HUNTINGTON AVE. IN CORRESPONDING MAP.		9/18/68	CITY OF RIVERSIDE, CALIFORNIA DEPARTMENT OF PUBLIC WORKS	STOVER AVE. ASSESSMENT DISTRICT	ACCOUNT NO. 6072 S-691
CHANGE 18+09 TO 18+10.		10-15-68			
REMOVE 18+09 AND EXTEND SEWER TO HUNTINGTON AVE. IN CORRESPONDING MAP.		10-15-68	APPROVED BY: [Signature] SENIOR ENGINEER	APPROVED BY: [Signature] DIRECTOR OF PUBLIC WORKS	SHEET 2 OF 2 S.S. PROJECT NO.
10-15-68		10-15-68	PARK DEPARTMENT	DATE 1-8-68	
DESIGNED BY: [Signature] DRAWN BY: [Signature] CHECKED BY: [Signature]		HORIZ. SCALE: 1" = 40' VERT. SCALE: 1" = 4'			