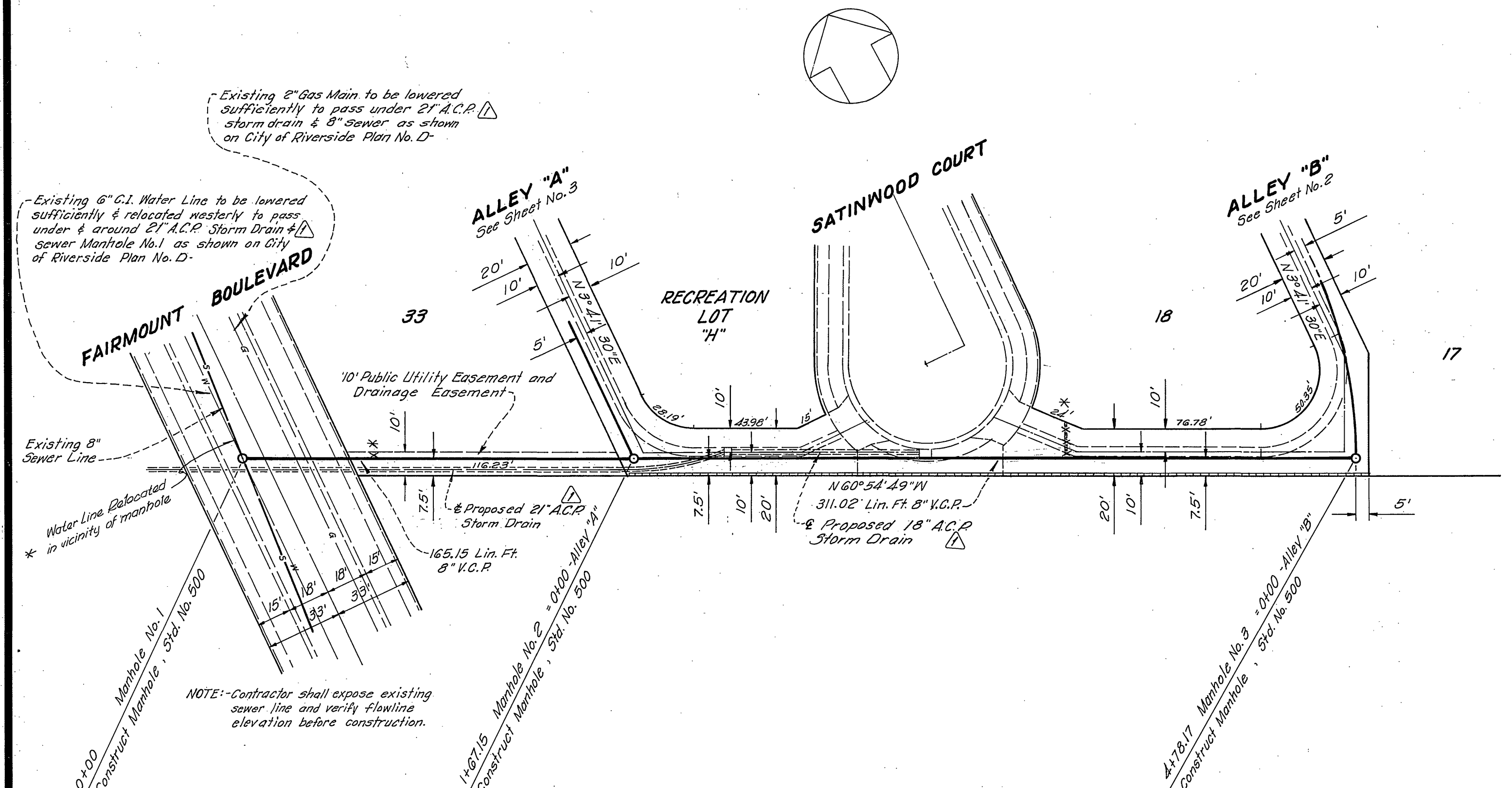


B-10

BENCH MARK—
Main Street and Columbia Avenue - PK nail in Lead
in N.E. Curbs Return. Elev. 813.84. City of Riverside F.B. 709 1/2



GENERAL NOTES

- Construction shall be in accordance with the City of Riverside, Department of Public Works, Standard Specifications No. 461 and Standard Drawings.
- It shall be the responsibility of the contractor to clear the right of way in accordance with the provisions of the law as it affects each utility including irrigation lines and appurtenances and at no cost to the City.
- Joints shall be in conformance with A.S.T.M. Specifications C-125-64 Type I or II or to A.S.T.M. Specifications C-594-66T (Band Seal) with certain exceptions or modifications on file with the City Engineer.
- Pipe shall be bedded per Case I, Standard Drawing No. 452, unless otherwise specified on plan.
- Location of laterals to be determined in the field by the owner or his representative.
- All stubs and laterals to be constructed in accordance with Standard Drawing No. 562. Stubs shall be 2' long, plugged & capped.
- Manhole frames and covers to be set to existing or proposed pavement grades.
- Laterals are to be 4" and extended to property line.
- Prior to construction of sewer Contractor is to expose existing sewer and contact Engineer for verification of existing elevations.

ESTIMATE OF QUANTITIES

Manholes, Std. No. 500	10 ea.
8" V.C.P. Sewer	2,385 Lin. Ft.
4" V.C.P. Lateral	548 Lin. Ft.
8" x 4" Tees or Wyes	40 ea.
Cleanouts, Std. No. 560	1 ea.
Sewer Encasement	16 Lin. Ft.

* as built 5-1-70 norm
✓ BY KARL

C M ENGINEERING ASSOCIATES
Civil Engineering, Planning & Surveying
234 No. Arrowhead Avenue
San Bernardino, California 92408
Phone: (714) 894-8804

Approved By: *John Miller* Date: 10/22/69
R.O.E. 2750

DESIGNED BY: R.L.V. DRAWN BY: J.B. CHECKED BY: B.B.M.

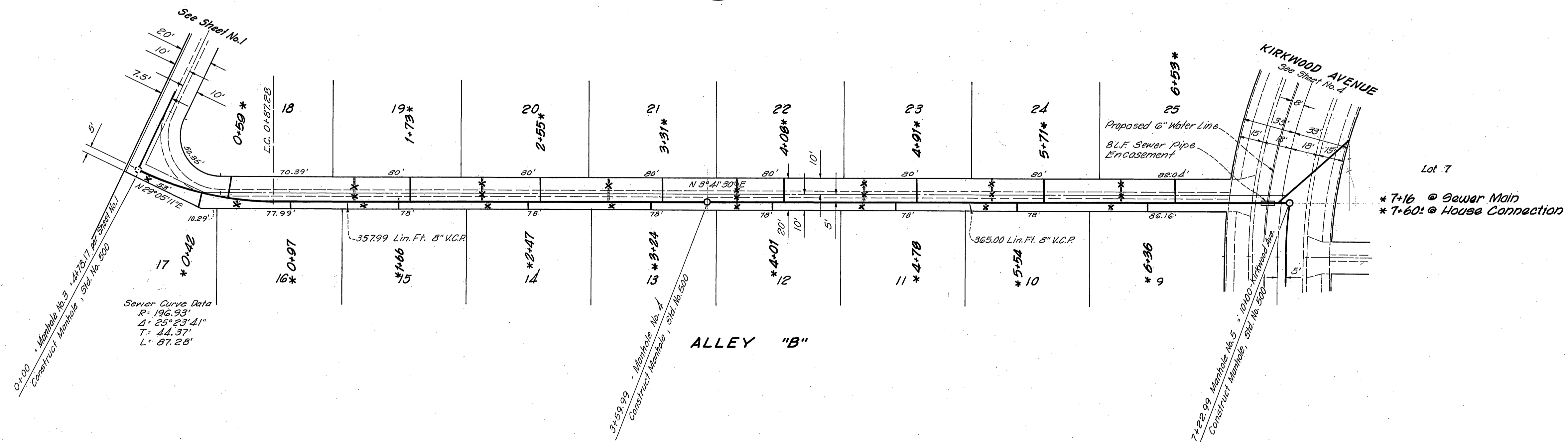
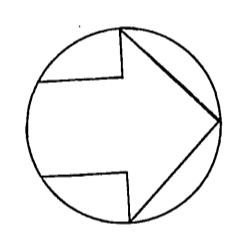
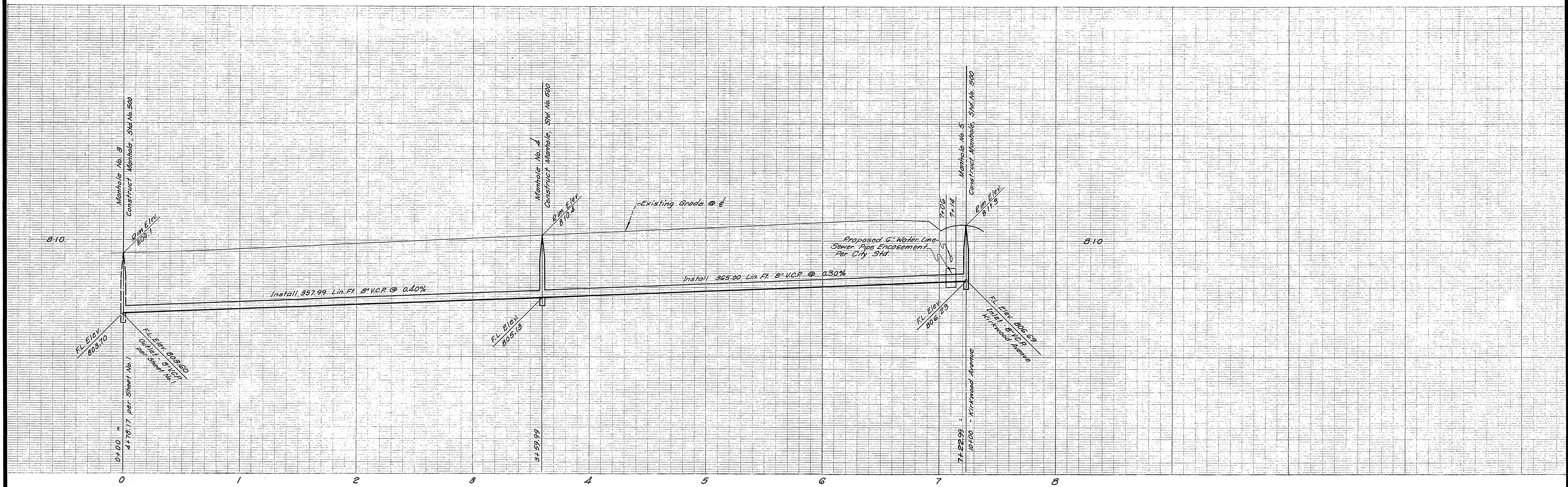
Approved By: *Howard R. Drennon* 12-10-69
Chief, Public Utilities Engineer - Water Date

APPROVED BY	DATE	APPROVED BY	DATE
OFFICE ENGINEER	12/21	<i>[Signature]</i>	
PARK DEPARTMENT		DIRECTOR OF PUBLIC WORKS	
TRAFFIC DIVISION			
ASSISTANT CITY ENG.			

DATE: 1-5-70

SEWER PLAN AND PROFILE	PROJECT NO.
SEWER COLLECTION LINE	5-779
AT SOUTH TRACT BOUNDARY	SHEET 1 OF 4
TRACT NO. 3960	FILE NO.
HORIZ. SCALE: 1" = 40'	VERT. SCALE: 1" = 4'

W.O. 5-69 G For McKean Construction Co.



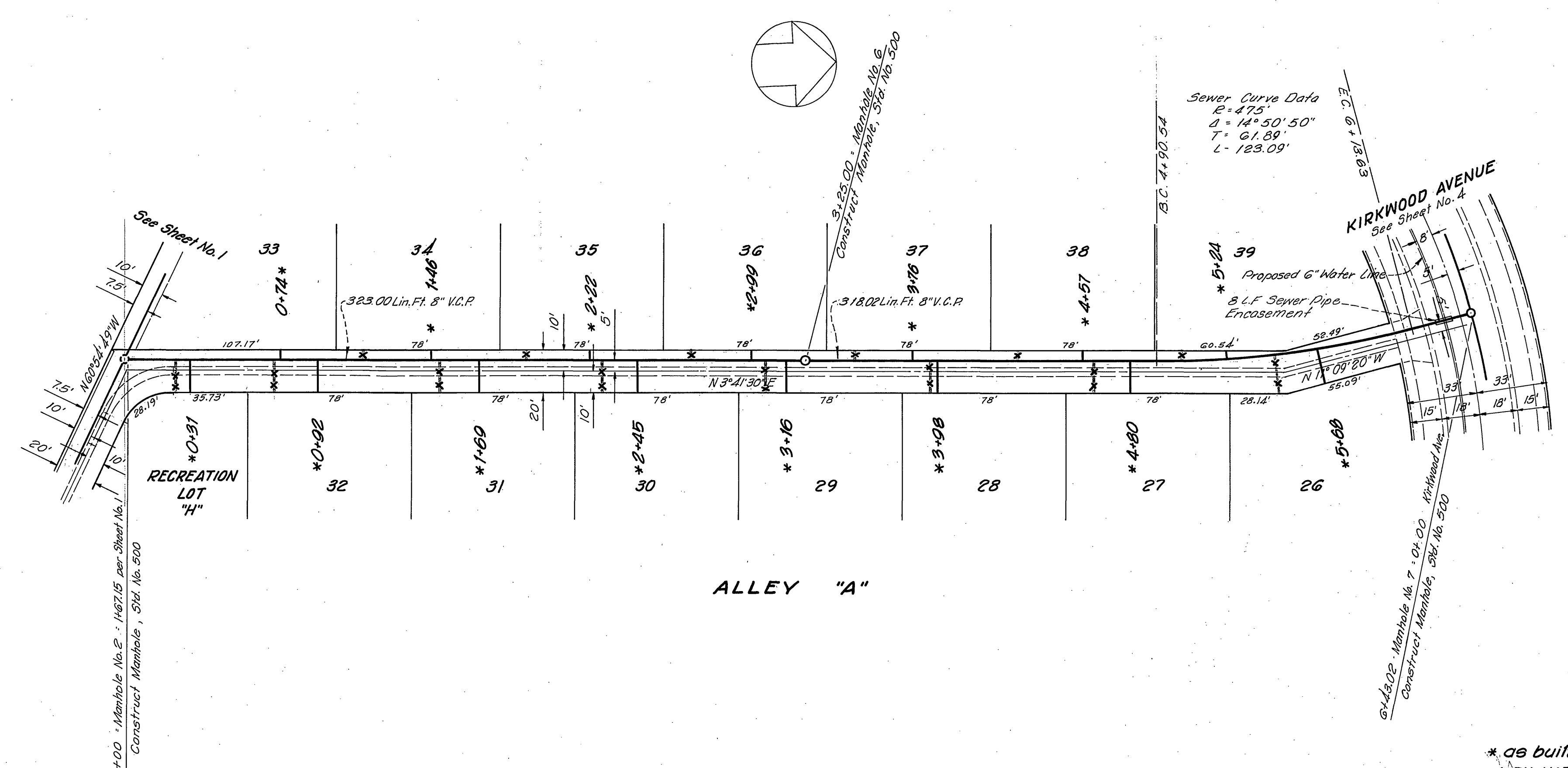
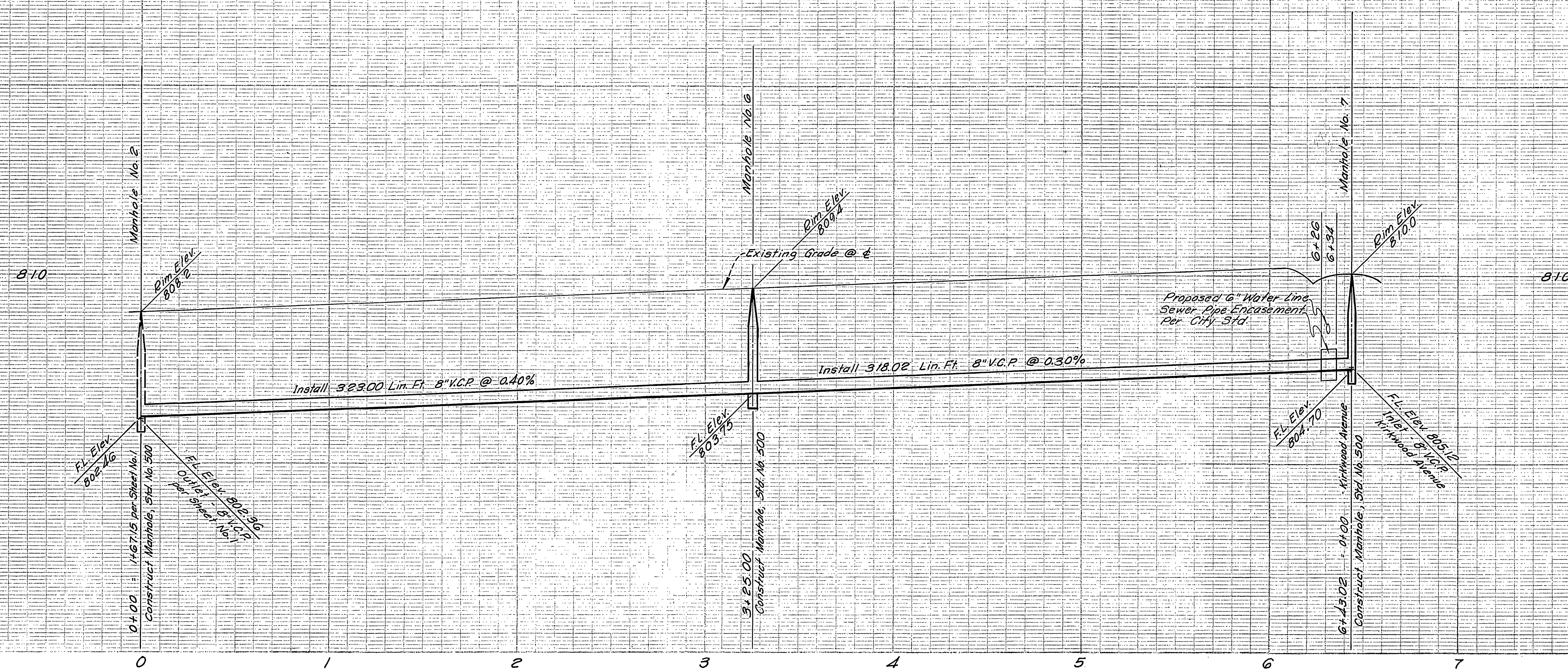
* as built 5-1-70 norm
 ✓ BY KARL

Approved By:		Howard K. Ormerod 12-10-69 Chief Public Utilities Engineer - Water Date	
APPROVED BY	BY	DATE	APPROVED BY
OFFICE ENGINEER	RLV	12/11	Director of Public Works
PARK DEPARTMENT			
TRAFFIC DIVISION			
ASSISTANT CITY ENG.			
DATE		1-5-70	

C.M. ENGINEERING ASSOCIATES
 Civil Engineering, Planning & Surveying
 234 No. Arrowhead Avenue
 San Bernardino, California 92408
 Phone: (714) 884-8804
 Approved By: *Don B. Miller* Date: 10/22/69
 R.C.E. 3750
 H.O. 5-69-6 For Malton Construction Co.

MARK	REVISIONS	APPR. DATE
DESIGNED BY	DRAWN BY	CHECKED BY
RLV	J.B.	D.B.M.

SEWER PLAN AND PROFILE	PROJECT NO.
ALLEY "B"	5-779
TRACT NO. 3960	SHEET 2 OF 4
HORIZ. SCALE: 1" = 40'	VERT. SCALE: 1" = 4'
FILE NO.	



* 08 built 5-1-70 norm
BY KARL

C.M. ENGINEERING ASSOCIATES
 Civil Engineering, Planning & Surveying
 234 No. Arrowhead Avenue
 San Bernardino, California 92408
 Phone: (714) 884-8804

Approved By: *Don B. Miller* Date: 10/22/69
 R.O.E. 3750
 W.O. 5-69-6 For McKean Construction Co.

MARK	REVISIONS	APPR.	DATE

Approved By: *Howard A. Craven* 12-10-69
 Chief Public Utilities Engineer - Water Date

CITY OF RIVERSIDE, CALIFORNIA
DEPARTMENT OF PUBLIC WORKS

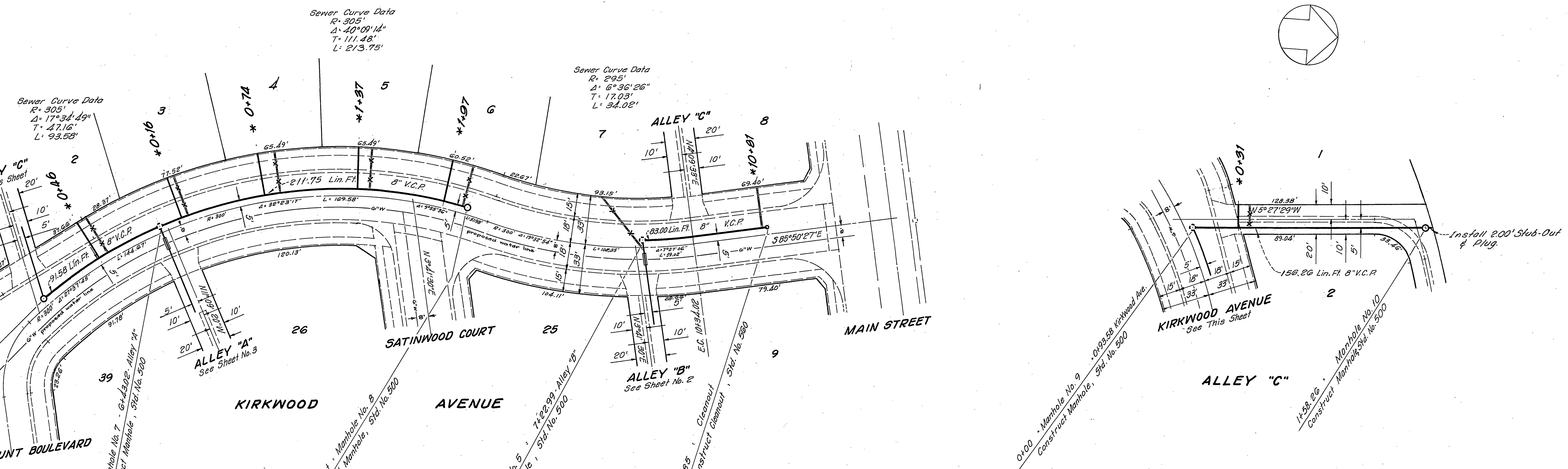
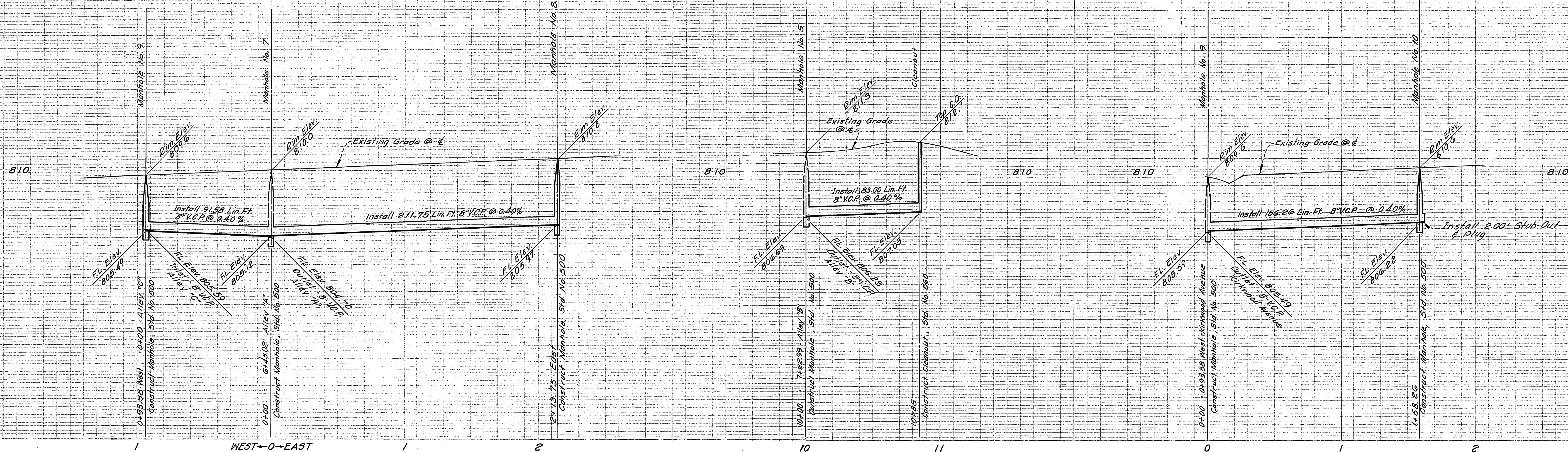
APPROVED BY	BY	DATE	APPROVED BY

SEWER PLAN AND PROFILE PROJECT NO.

ALLEY "A" PROJECT NO. **5-779**

TRACT NO. 3960 SHEET 3 OF 4

HORIZ. SCALE: 1" = 40' VERT. SCALE: 1" = 4' FILE NO.



0+99.58 West Manhole No. 9 0+100 Alley "C"
Construct Manhole, Std. No. 500

0+100 Manhole No. 7 0+100 Alley "A"
Construct Manhole, Std. No. 500

21+3.75 East Manhole No. 8
Construct Manhole, Std. No. 500

10+00 Manhole No. 5 1+22.99 Alley "B"
Construct Manhole, Std. No. 500

0+100 Manhole No. 9 0+100 Alley "C"
Construct Manhole, Std. No. 500

1+58.26 Manhole No. 10
Construct Manhole, Std. No. 500

* as built 5-1-70 norm
✓ BY KARL

C M ENGINEERING ASSOCIATES
Civil Engineering, Planning & Surveying
234 No. Arrowwood Avenue
San Bernardino, California 92408
Phone: (714) 884-8804
Approved By: *Don C. Miller* date 10/22/69
R.C.E. 0750
W.O. 5-69-G For McKeon Construction Co.

MARK REVISIONS APPR. DATE
DESIGNED BY R.L.V. DRAWN BY J.B. CHECKED BY D.E.M.

Approved By: *Howard J. Orman* 12-10-69
Chief Public Utilities Engineer - Water
CITY OF RIVERSIDE, CALIFORNIA
DEPARTMENT OF PUBLIC WORKS
APPROVED BY: *[Signature]*
OFFICE ENGINEER: *[Signature]* DATE: 12/21
PARK DEPARTMENT: *[Signature]*
TRAFFIC DIVISION: *[Signature]*
ASSISTANT CITY ENG. DATE: 1-5-70

SEWER PLAN AND PROFILE
KIRKWOOD AVENUE
ALLEY "C"
TRACT NO. 3960
PROJECT NO. **5-779**
SHEET 4 OF 4
HORIZ. SCALE: 1" = 40'
VERT. SCALE: 1" = 4'
FILE NO.