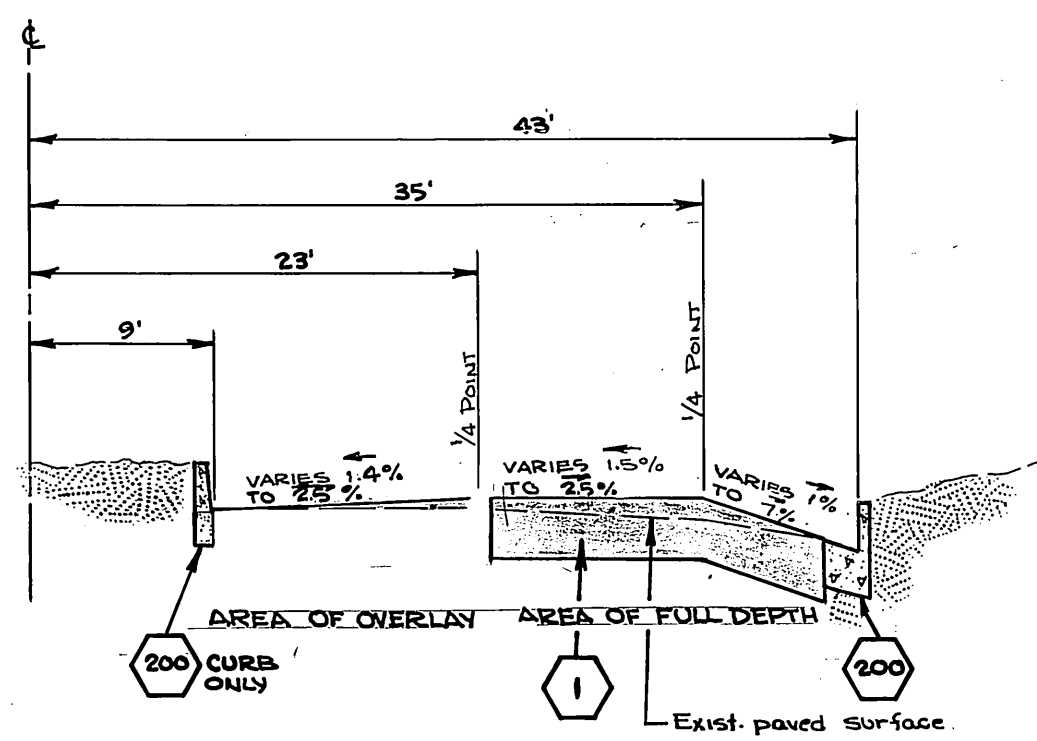
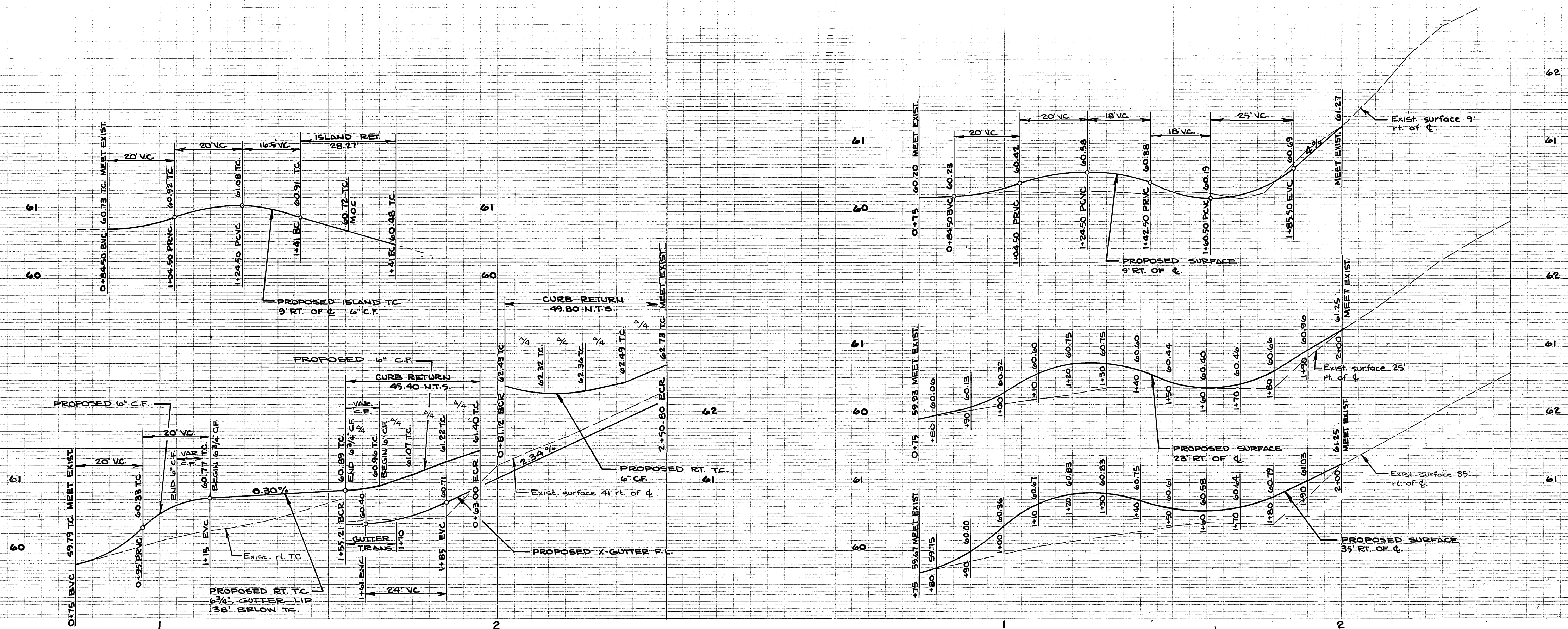


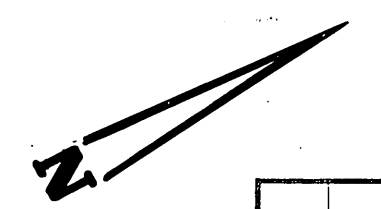
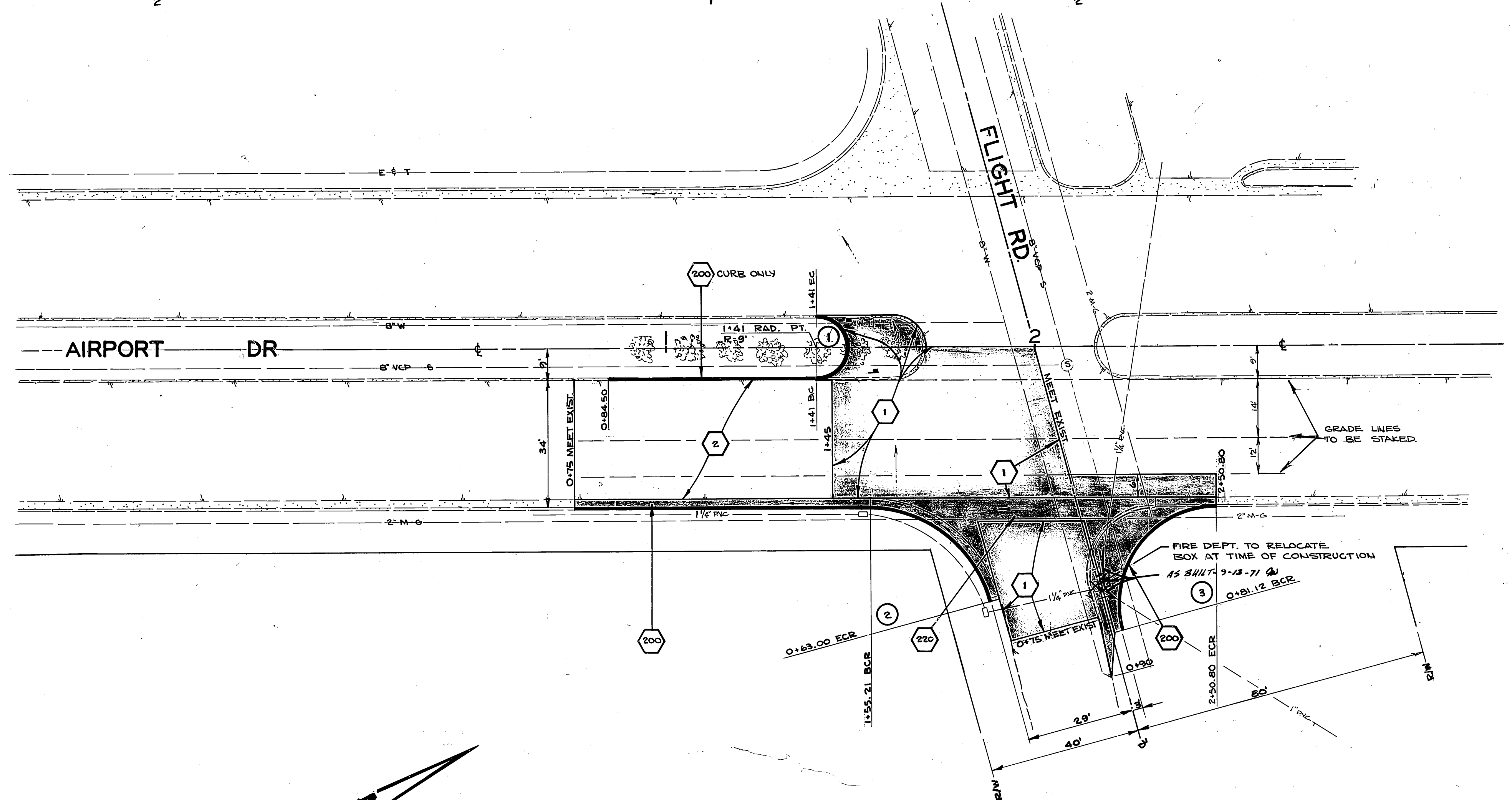
FB 944/3-4
 BM. USC & G DISK
 E-520 NEAR N.E.
 CORNER OF RIVER-
 SIDE AIR SERVICE
 BLDG. REF CRFB
 A-3/51. ELEV. 774.21



TYPICAL SECTIONS

- 1 REMOVE EXIST. PAVING, PLACE 8" AC. PAVING OVER NATIVE SOIL. COMPACT TOP 6" OF NATIVE SOIL TO 95% RELATIVE COMPACTION.
- 2 OVERLAY EXIST. AC. PAVING WITH VARIABLE THICKNESS ASPHALTIC CONCRETE.
- 200 CONST. CURB & GUTTER PER STD. 200. VARY C.F. & GUTTER LIP PER PLAN & GRADE SHEETS.
- 220 CONST. X-GUTTER PER STD. 220. (6" WIDE GUTTER)

CURVE	R	Δ	L	T
1	9.00'	180° 00' 00"	28.27'	-
2	35.00'	74° 19' 25"	45.40'	26.53'
3	27.00'	105° 40' 35"	49.80'	35.62'



CITY OF RIVERSIDE, CALIFORNIA DEPARTMENT OF PUBLIC WORKS		PROJECT NO. 424
AIRPORT DRIVE DRAINAGE DIVERSION		D-186
APPROVED BY: <i>William D. Anderson</i> PRINCIPAL ENGINEER PARK DEPARTMENT TRAFFIC DIVISION DATE: 6/15/71		FILE NO.
DESIGNED BY: LL DRAWN BY: LL CHECKED BY: S.J.B.	REVISIONS APPR. DATE	HORIZ. SCALE: 1" = 20' VERT. SCALE: 1" = 1'