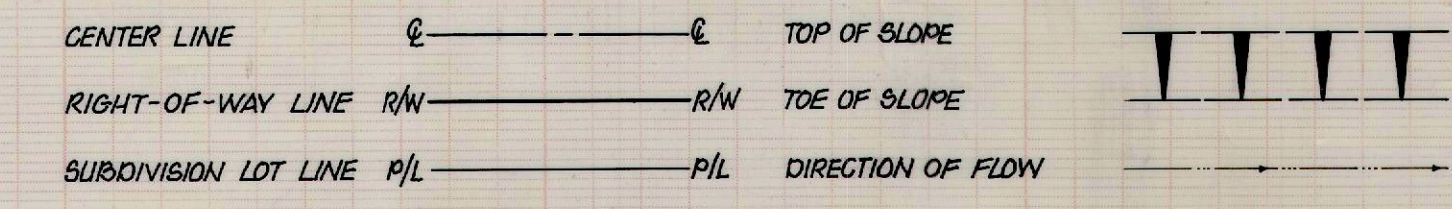


CONSTRUCTION LEGEND



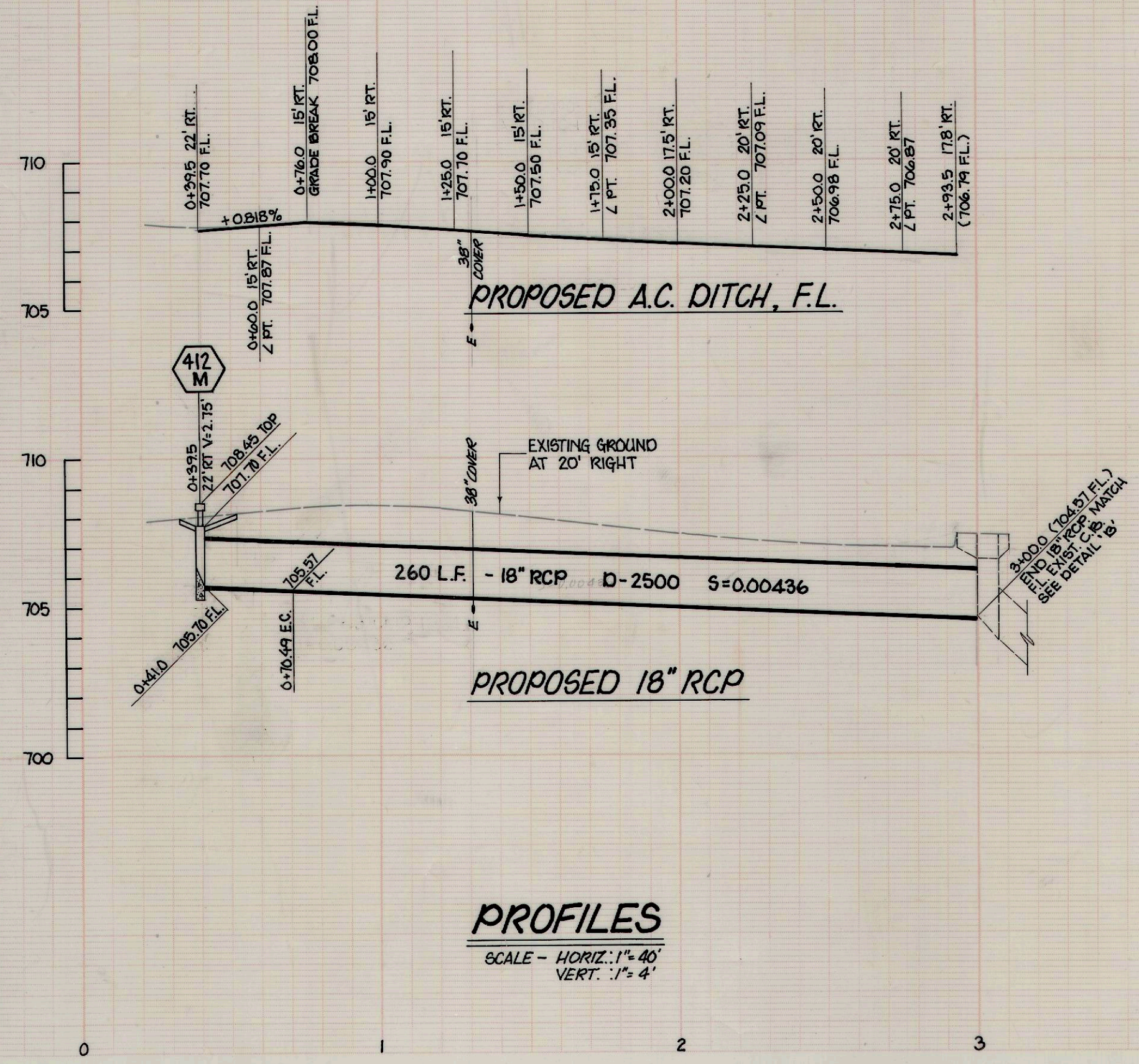
SPECIFIC CONSTRUCTION NOTES

NUMBERS ABOVE 100 IN A HEXAGON ON THE PLAN REFER TO THE RESPECTIVE STANDARD DRAWING AND SHALL BE CONSTRUCTED ACCORDINGLY, UNLESS MODIFICATIONS ARE NOTED ON THE PLAN OR COVER SHEET BELOW. ANY NUMBER SHOWN BELOW THE STANDARD DRAWING NUMBER INDICATES THE SPECIFIC ALTERNATE TO BE CONSTRUCTED.

- VARIABLE THICKNESS A.C. DITCH (MIN. 0.21', MAX. 0.42')
- 0.42' THICK A.C. DITCH AND/OR PIPE PROTECTION (TRENCH SURFACING)

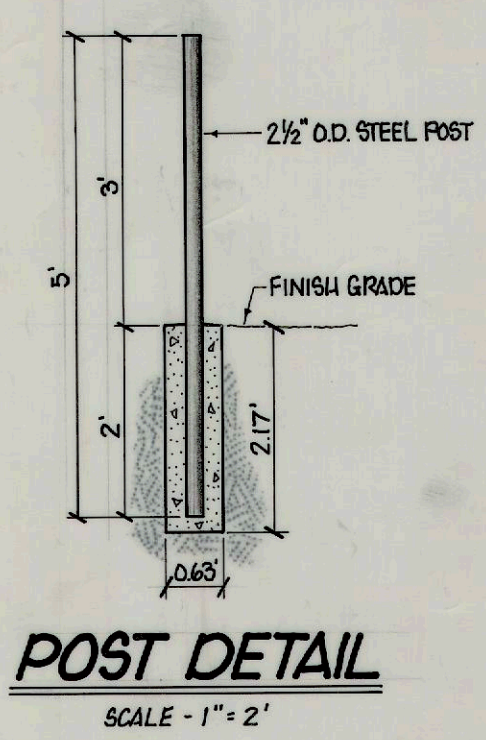
GENERAL CONSTRUCTION NOTES

- ALL ELEVATIONS SHOWN ON THE PLAN SHALL BE STAKED IN THE FIELD.
- EXISTING UTILITIES SHOWN ON THIS PLAN ARE PLOTTED FROM UTILITY RECORDS. THE CONTRACTOR IS REQUIRED TO TAKE DUE PRECAUTIONARY MEASURES TO LOCATE AND PROTECT ALL UTILITIES WHETHER OR NOT SHOWN ON THIS PLAN. IF COVER OF THE UTILITY IS KNOWN IT IS SHOWN ON THE PROFILE. UTILITIES SHOWN IN THE PROFILE AS $\frac{1}{2}$ " - \bullet INDICATES THAT COVER IS UNKNOWN BUT UTILITY IS NOT EXPECTED TO CONFLICT WITH PROPOSED IMPROVEMENT.
- SEE CITY OF RIVERSIDE STANDARD DRAWINGS 452 AND 453 FOR PIPE BEDDING AND TRENCH BACKFILL.

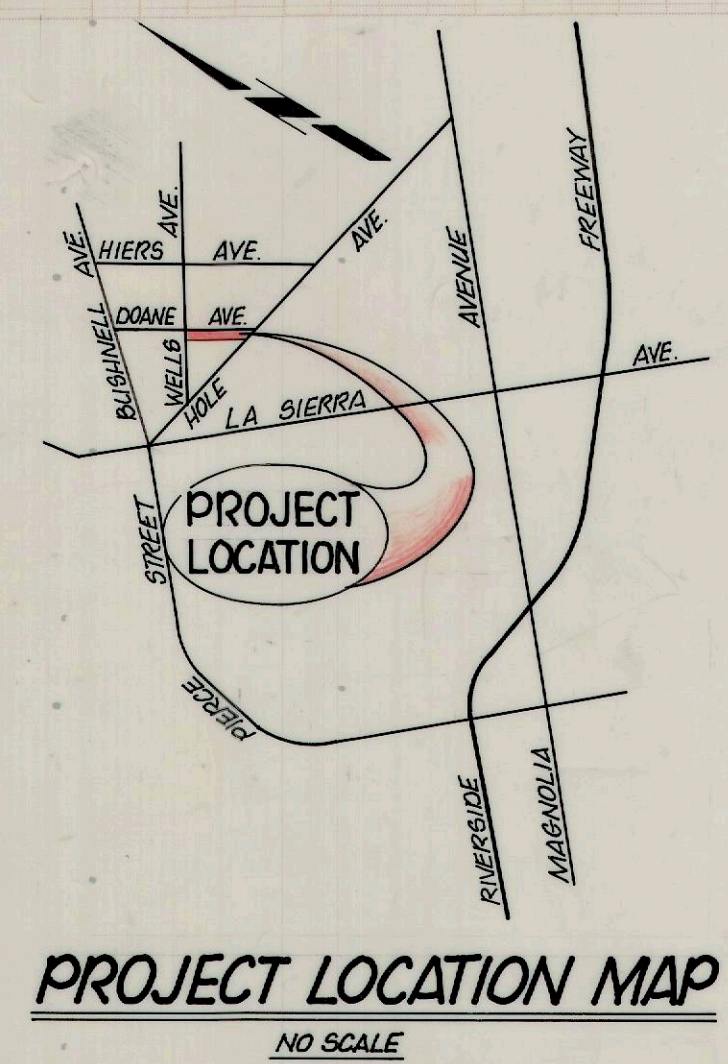


PROFILES
SCALE - HORIZ.: 1" = 40'
VERT.: 1" = 4'

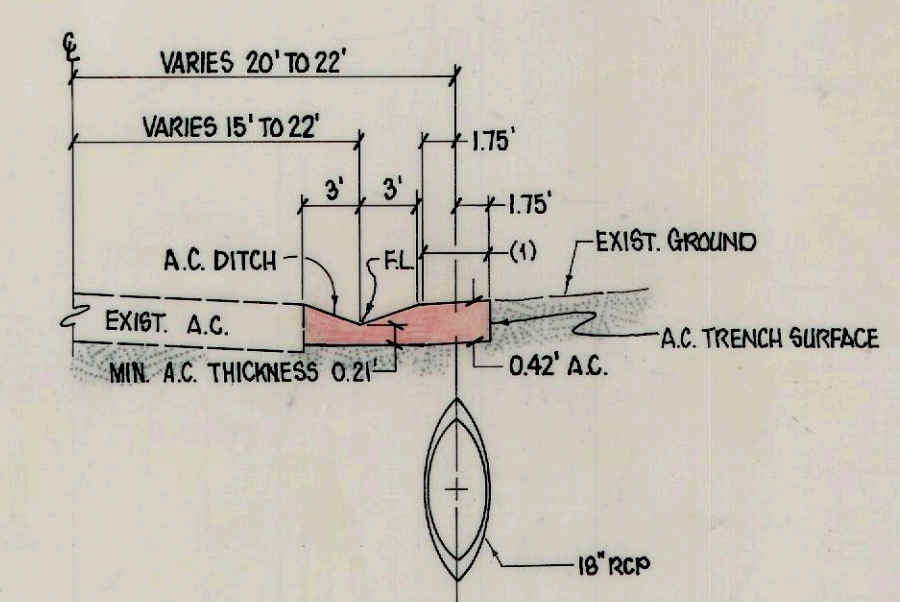
BENCHMARK: FD PK NAIL IN TOP OF CURB @ NORTHWEST CORNER OF TRAFFIC SIGNAL ISLAND ON THE SOUTHWEST CORNER HOLE AVE & LA SIERRA AVE. ELEV. - 713.089



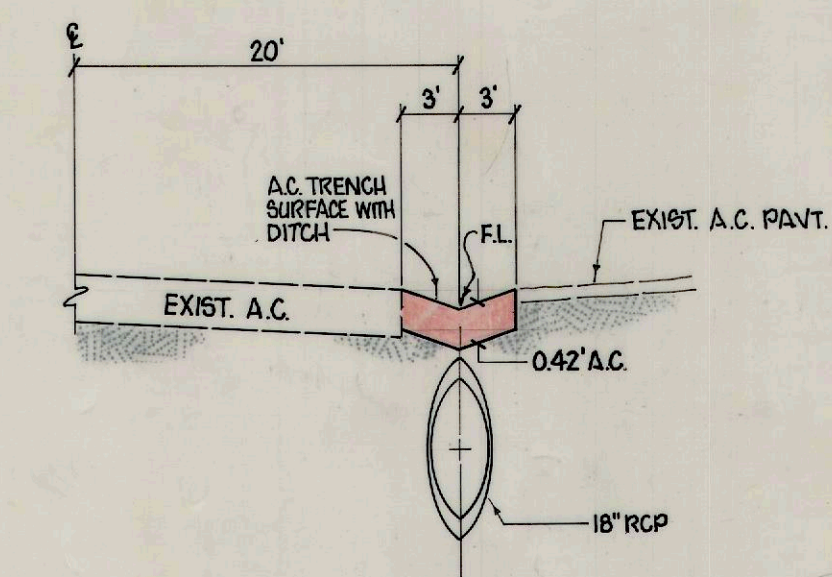
POST DETAIL
SCALE - 1" = 2'



PROJECT LOCATION MAP
NO SCALE

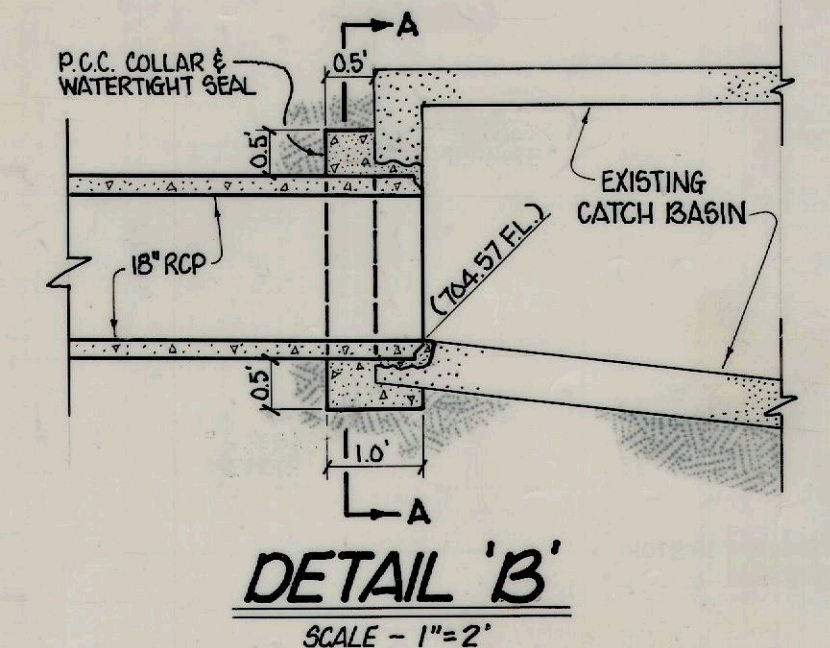


STA. 0+41 TO 2+05
(1) 0.42' A.C. TRENCH SURFACING FROM STA. 0+41.0 TO 1+11.0

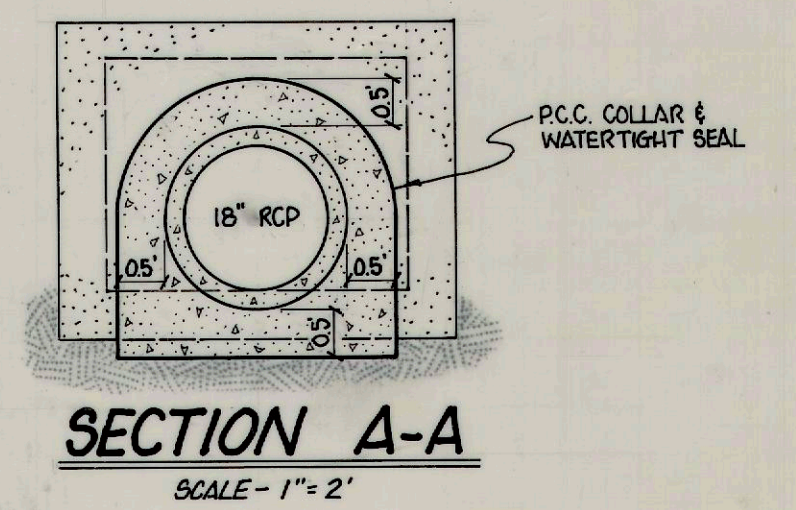


STA. 2+05 TO 2+93.5

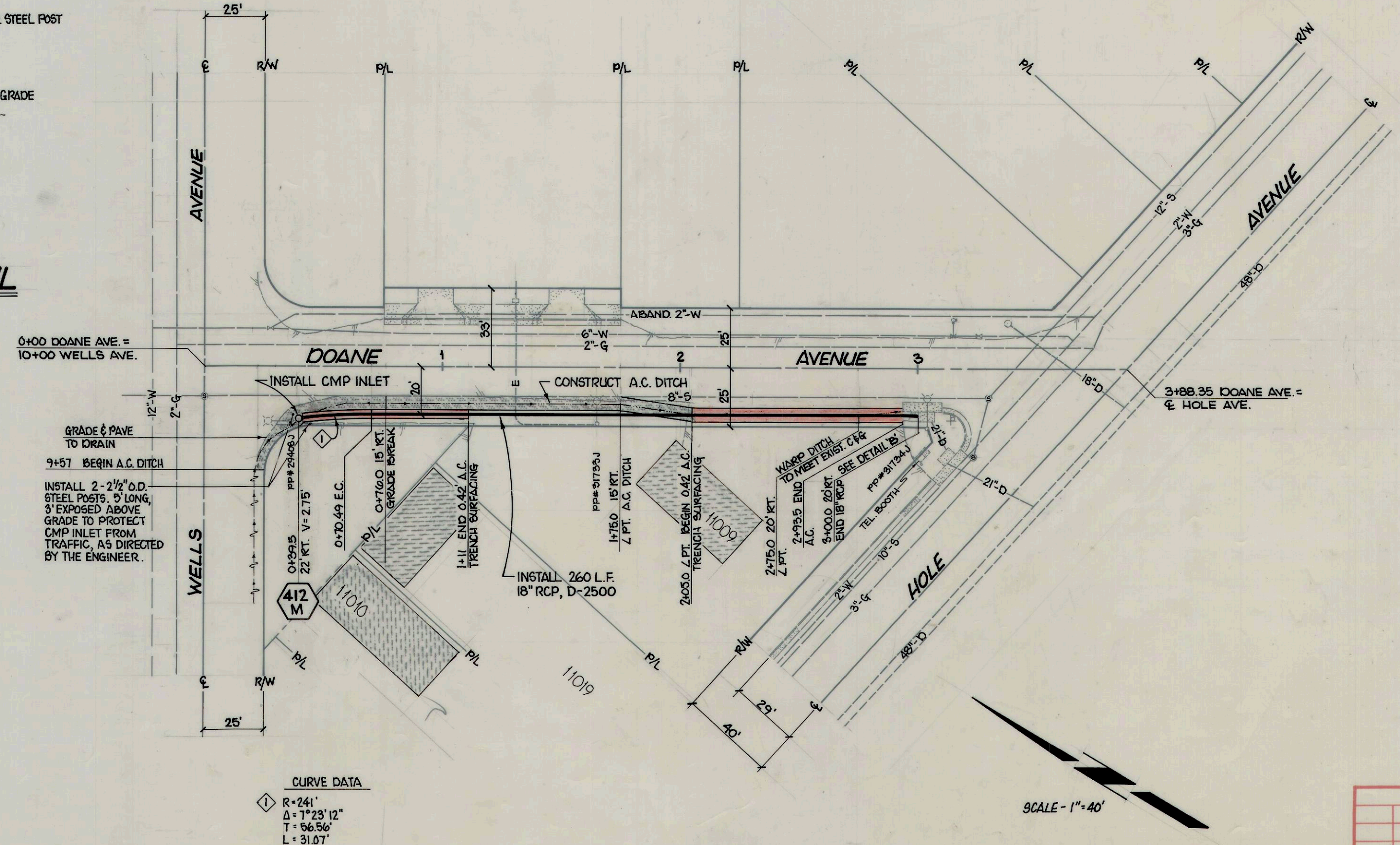
TYPICAL SECTIONS
SCALE - HORIZ.: 1" = 10'
VERT.: 1" = 2'



DETAIL 'B'
SCALE - 1" = 2'



SECTION A-A
SCALE - 1" = 2'



CURVE DATA
R = 241'
Δ = 7°23'12"
T = 66.56'
L = 31.07'

SCALE - 1" = 40'

<p>CITY OF RIVERSIDE PUBLIC WORKS DEPARTMENT</p>		<p>DOANE AVENUE STORM DRAIN</p>	
<p>APPROVED BY PRINCIPAL ENGINEER PARK DEPARTMENT TRAFFIC DIVISION CHIEF P.W. ENGINEER</p>	<p>APPROVED BY PUBLIC WORKS DIRECTOR</p>	<p>DESIGNED BY: <i>SK</i> DRAWN BY: <i>SK</i> CHECKED BY: <i>BJM</i></p>	<p>DATE: 4/3/11</p>
<p>REVISIONS</p>		<p>ACCOUNT NO. 09-575-462</p>	
<p>FILE NO.</p>		<p>D-389 SHEET 1 OF 1</p>	