

L. FREDERICK PACK
CITY ENGINEER
Covina, California

APPROVED BY: *[Signature]* DATE 7-17-58

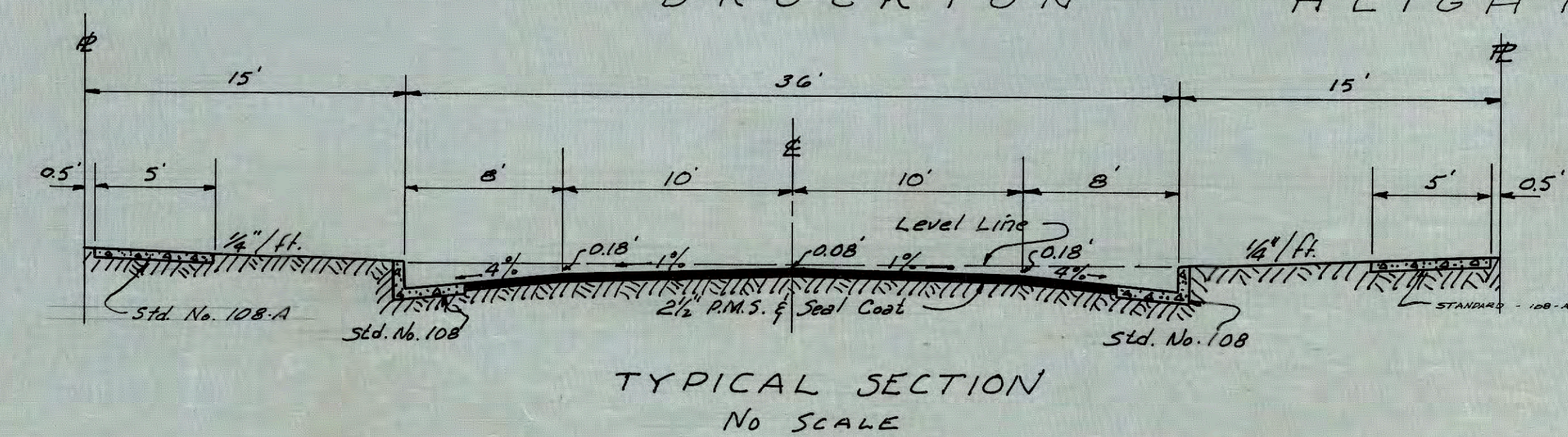
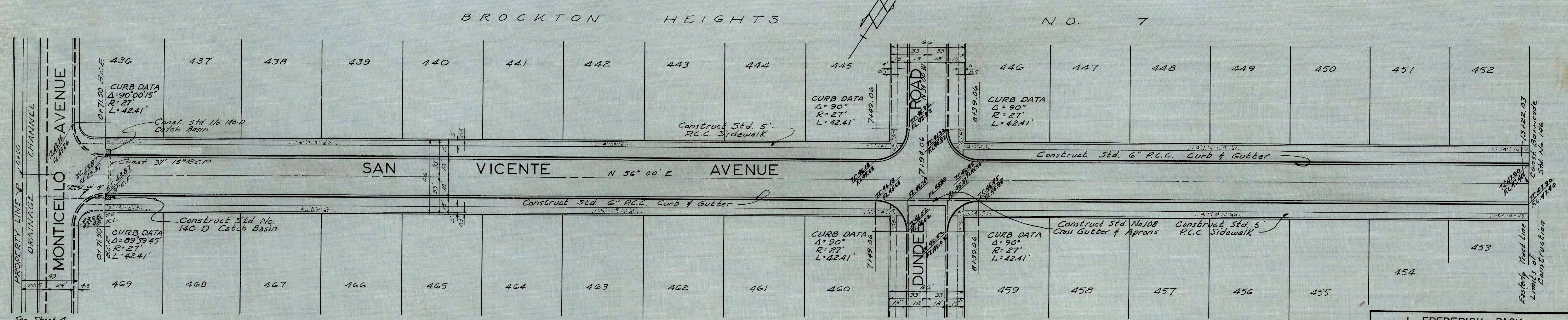
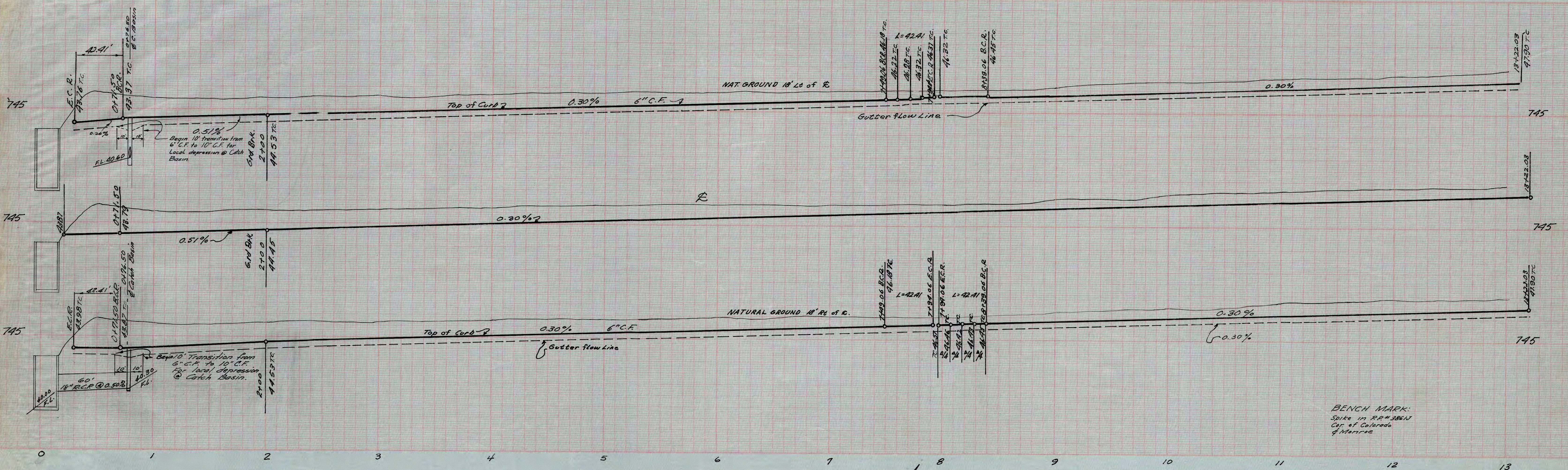
CITY OF RIVERSIDE, CALIFORNIA
DEPARTMENT OF PUBLIC WORKS

STREET PLAN & PROFILE
BROCKTON HEIGHTS NO. 7
COLORADO AVENUE
FROM MONTICELLO AVE TO 1320' N.

HOR. SCALE 1" = 40' VERT. SCALE 1" = 4'

APPROVED BY: *[Signature]* NO. R-209
Director of Public Works

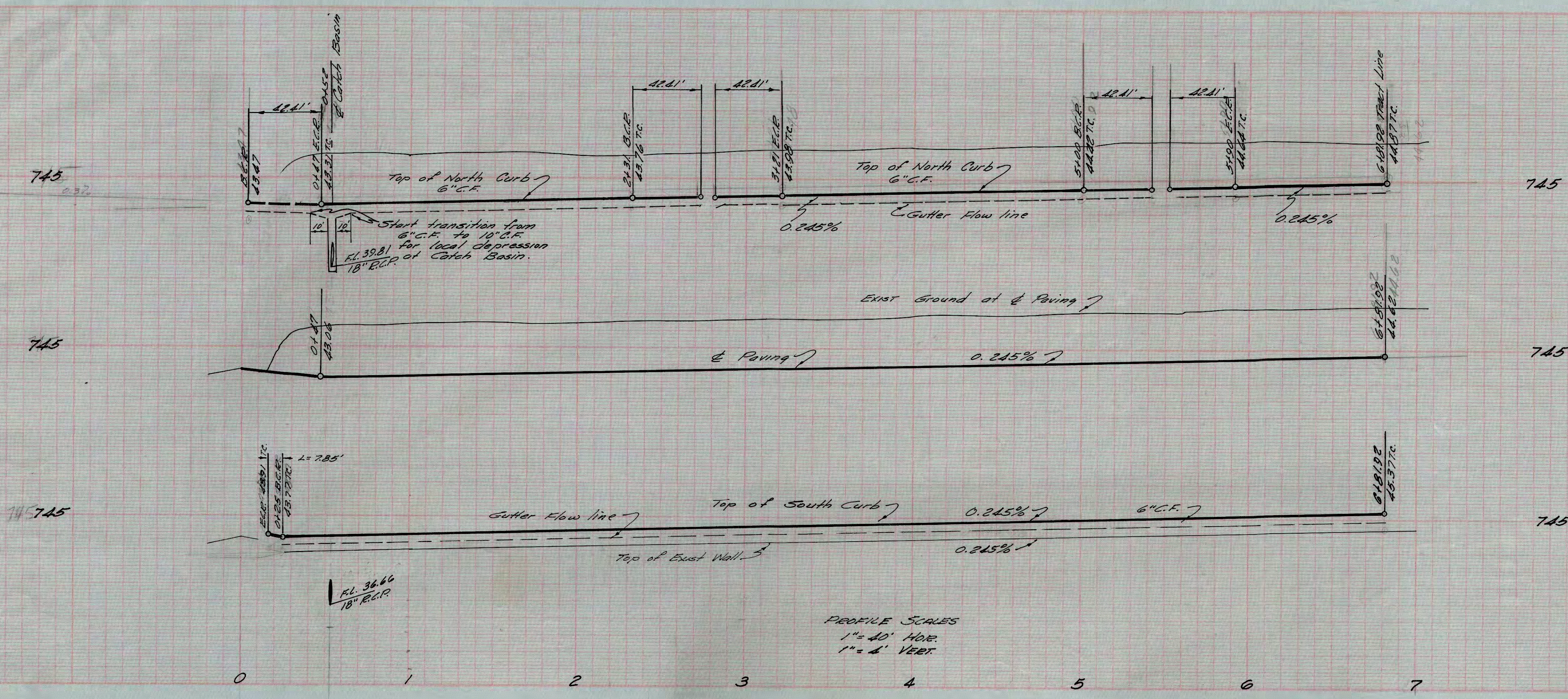
DATE: 7 August 1958 SHEET 1 OF 5



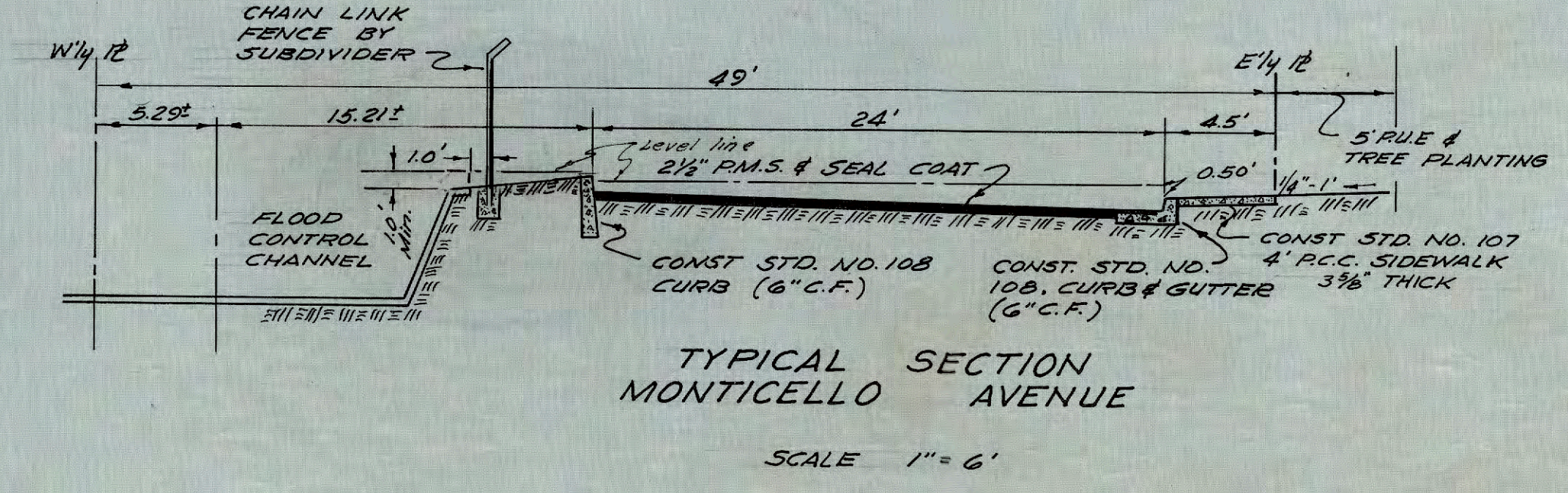
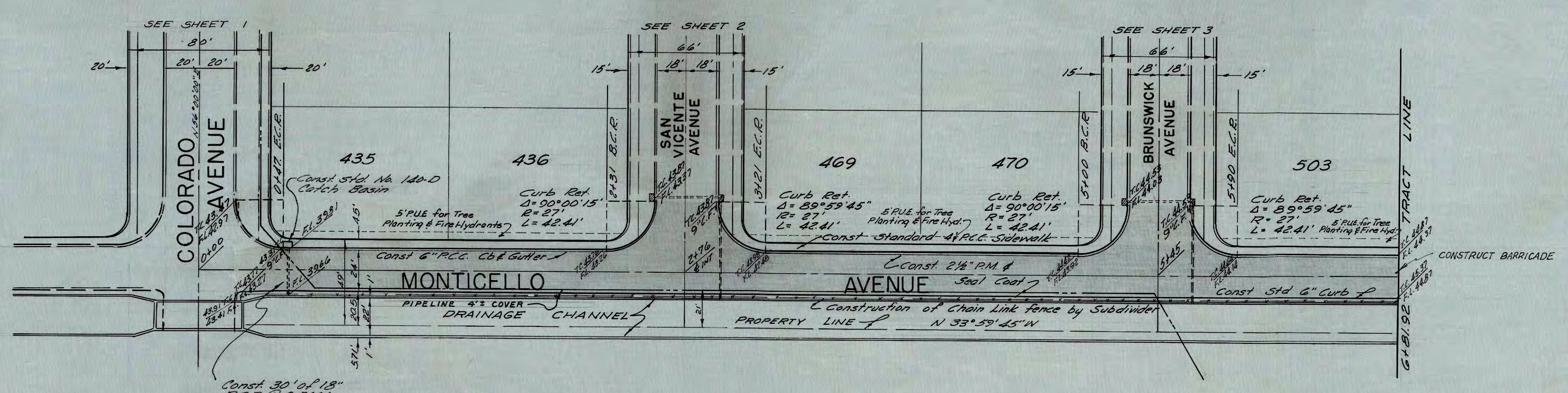
NOTE
 STREET SECTION TYPICAL FOR
 SAN VICENTE STREET-Sheet 2
 BRUNSWICK STREET-Sheet 3
 DUNDEE ROAD-Sheet 5

L. FREDERICK PACK
 R.E. 7448
 COVINA, CALIFORNIA
 APPROVED BY *L. Frederick Pack* DATE 7-1-58
 CITY OF RIVERSIDE, CALIFORNIA
 DEPARTMENT OF PUBLIC WORKS
 STREET PLAN & PROFILE
 BROCKTON HEIGHTS NO. 7
 SAN VICENTE AVENUE

HOR SCALE 1"=40' VERT SCALE 1"=4'
 APPROVED BY *Francis J. LaBelle* Director of Public Works NO. **R-209**
 DATE 7 August 1958 SHEET 2 OF 5



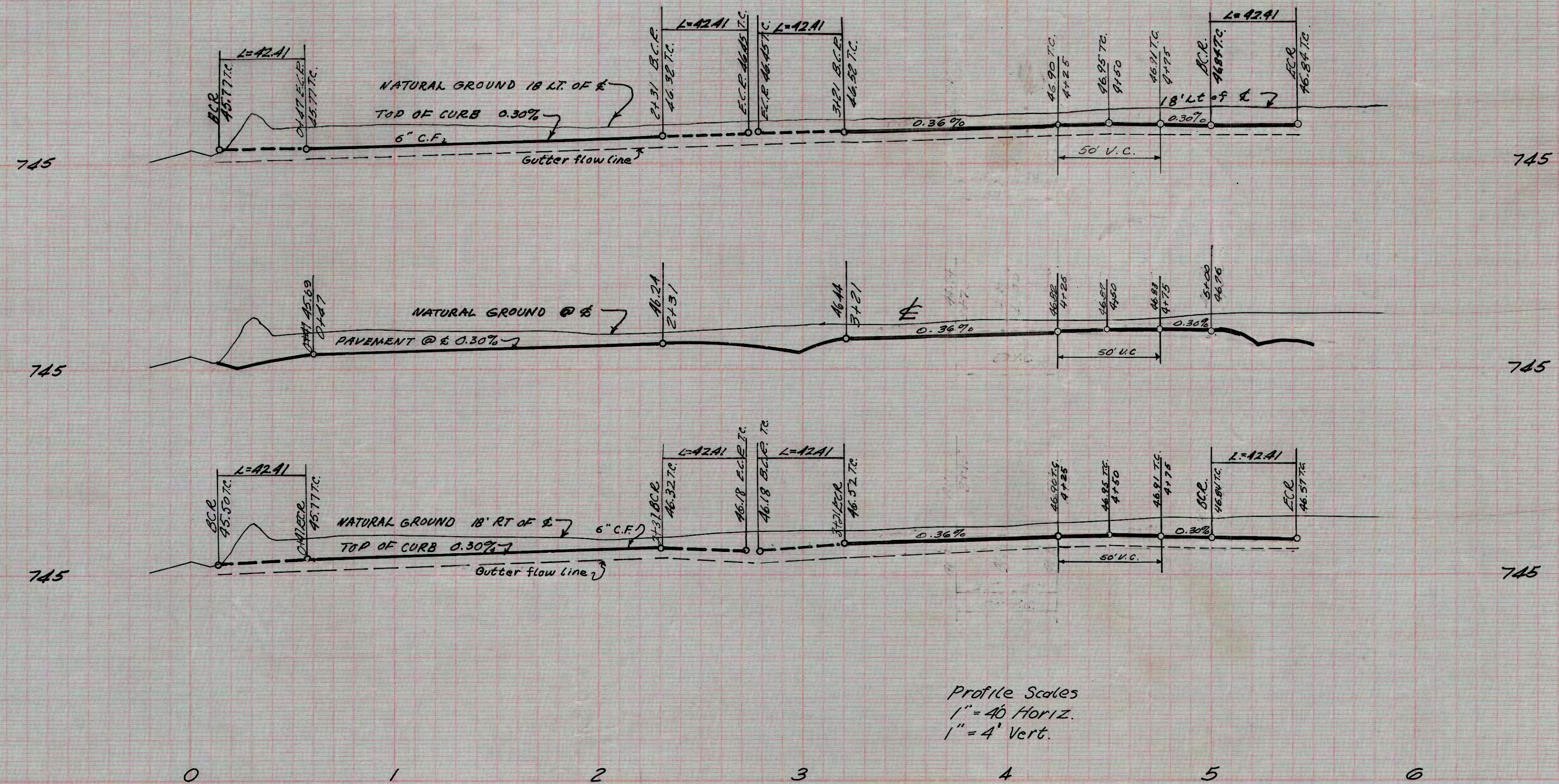
BENCH MARK
Spike in RR # 3861 J.
Colorado & Monroe.
El. 754.46'



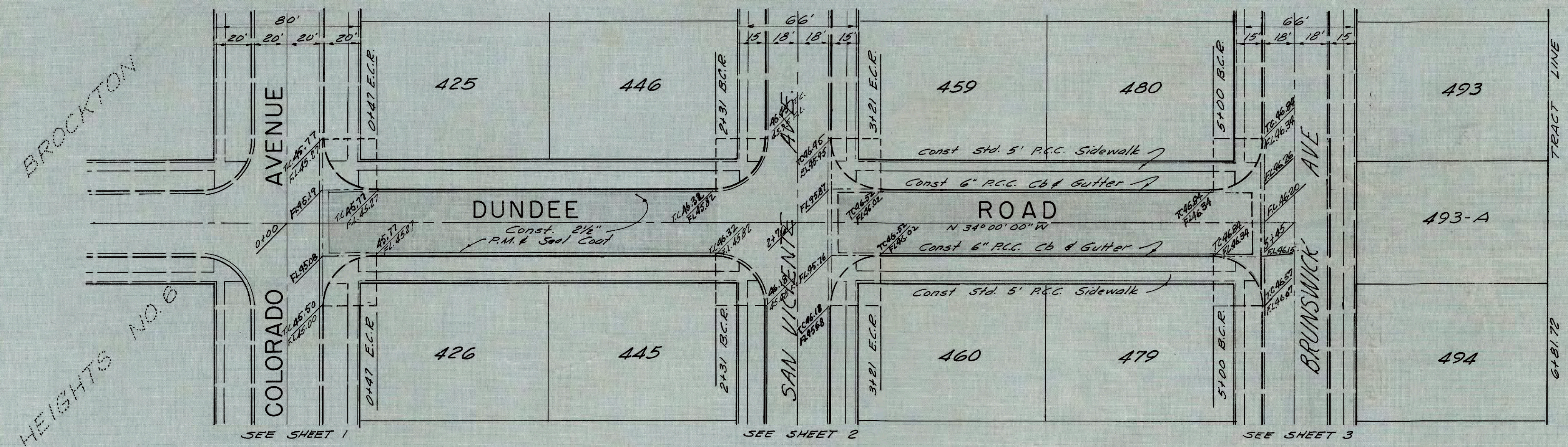
TYPICAL SECTION
MONTICELLO AVENUE
SCALE 1" = 6'

L. FREDERICK PACK
R.E. 7448
COVINA, CALIFORNIA
APPROVED BY: *L. Frederick Pack* DATE 7-7-58
CITY OF RIVERSIDE, CALIFORNIA
DEPARTMENT OF PUBLIC WORKS
STREET PLAN & PROFILE
BROCKTON HEIGHTS NO. 7
MONTICELLO AVENUE
FROM COLORADO AVE. TO TRACT LINE
HOR. SCALE 1" = 40' VERT. SCALE 1" = 4'
APPROVED BY: *Travis L. Tolson*
FOR: Director of Public Works
NO. **R-209**
DATE: 7 August 1958 SHEET 4 OF 5

INDEXED 1958



BENCH MARK.
 Spike in RR # 3861 J.
 Colorado & Monroe
 El. 754.46'



NOTE: FOR TYPICAL STREET SECTION, SEE SHEET NO. 2

L. FREDERICK PACK
 COVINA, CALIFORNIA
 APPROVED BY: *L. Frederick Pack* DATE: 7-7-58
 CITY OF RIVERSIDE, CALIFORNIA
 DEPARTMENT OF PUBLIC WORKS
 STREET PLAN & PROFILE
 BROCKTON HEIGHTS NO. 7
 DUNDEE ROAD
 FROM COLORADO AVE. TO 660' E.
 HOR SCALE 1"=40' VERT SCALE 1"=4'
 APPROVED BY: *L. Frederick Pack*
 FOR: Director of Public Works.
 NO. **R-209**
 DATE: August 1958 SHEET 5 OF 5