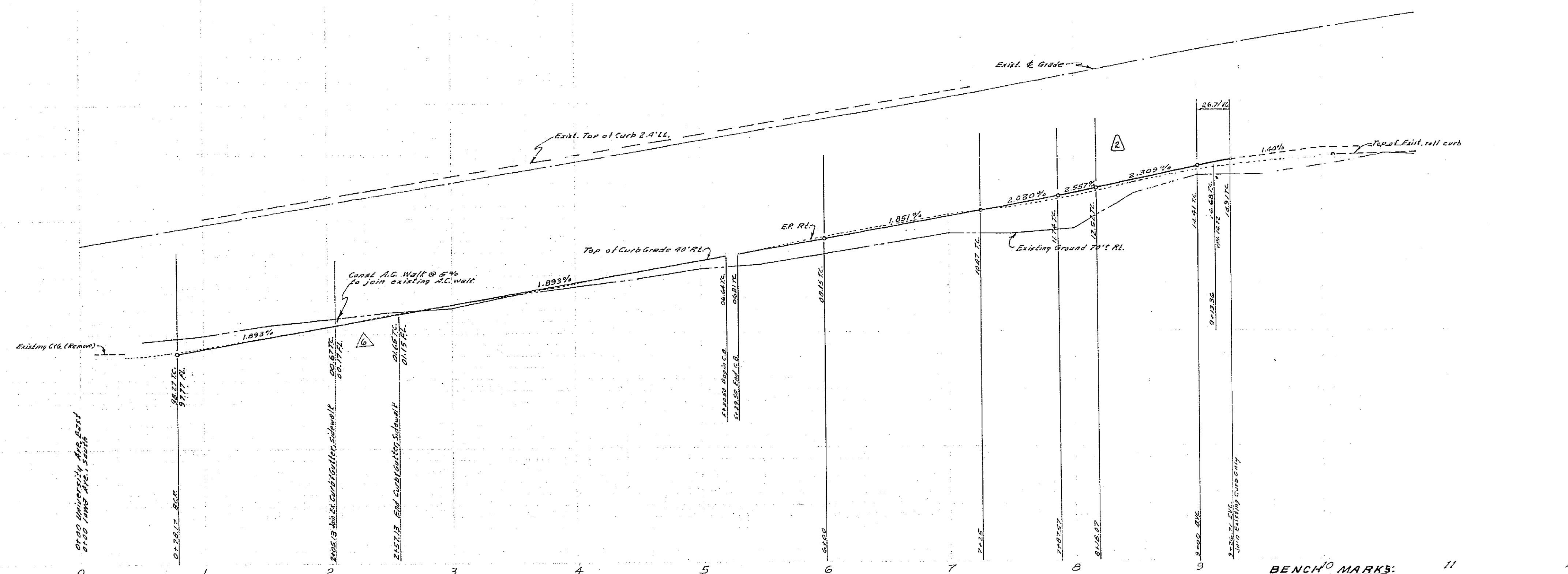


1000
1000
990

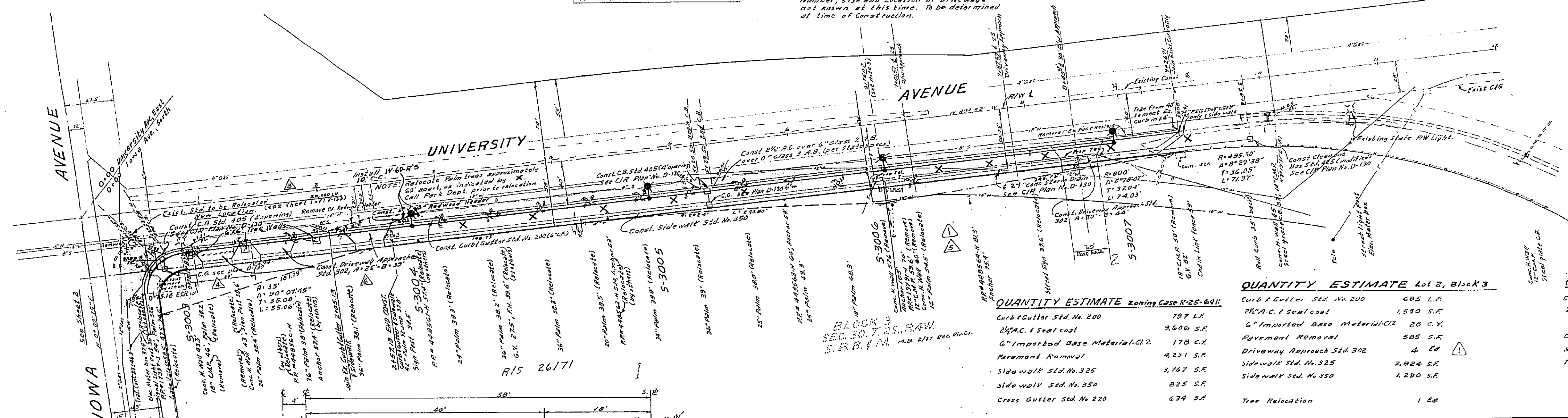
1020
1020
1010



BENCH MARKS: 11 12
 1. Elev. 997.623 CIP, FB, G25, P.K. in N.W. Curb Return University Ave. corner.
 2. Elev. 996.63 FB 558 pipe 45', Park Man. inside Cap and Man. in University Plaza 4' North of E of RW 314, 3100.

CAUTION
 Telephone, underground, contact Pacific Telephone Co. 24 hr. prior to Const. Phone 446-0027.

NOTE:
 Number, size and location of Driveways and lanes of this block, to be determined at time of construction.



- (7) The finished sub grade shall have a composition of not less than 90% for a depth of 0.5 feet as determined by test method on C.I.P. 287 immediately prior to placement of concrete.
- (8) Check with street lighting engineer for street light requirements, P.S. 787-7321.
- (9) If improvements for Lot 2, Block 3 are Const. prior to improvements for R/S 26171, roadway shoulder and parking area to meet existing edge of paving will be required.

NOTE:
 For Lighting Notes and Legend, see sheet 3.

QUANTITY ESTIMATE zoning Case R-25-645

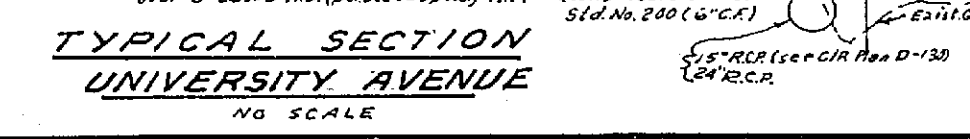
| | |
|---------------------------------|----------|
| Curb & Gutter Std. No. 200 | 797 LF |
| 2 1/2" AC. 1 Seal coat | 9,606 SF |
| 6" Impervious Base Material-C12 | 170 CY |
| Pavement Removal | 4,231 SF |
| Sidewalk Std. No. 325 | 3,747 SF |
| Sidewalk Std. No. 350 | 825 SF |
| Cross Gutter Std. No. 220 | 634 SF |

QUANTITY ESTIMATE Lot 2, Block 3

| | |
|---------------------------------|----------|
| Curb & Gutter Std. No. 200 | 685 LF |
| 2 1/2" AC. 1 Seal coat | 1,330 SF |
| 6" Impervious Base Material-C12 | 20 CY |
| Pavement Removal | 585 SF |
| Driveway Approach Std. 302 | 4 EA |
| Sidewalk Std. No. 325 | 2,024 SF |
| Sidewalk Std. No. 350 | 1,290 SF |
| Tree Relocation | 1 EA |

QUANTITY ESTIMATE R/S 26171

| | |
|---------------------------------|-----------|
| Curb & Gutter Std. No. 200 | 1,046 LF |
| 2 1/2" AC. 1 Seal coat | 18,325 SF |
| 6" Impervious Base Material-C12 | 339 CY |
| Curb & Gutter Removal | 40 LF |
| Sidewalk Std. No. 350 | 2,275 SF |
| Tree Relocation | 12 EA |



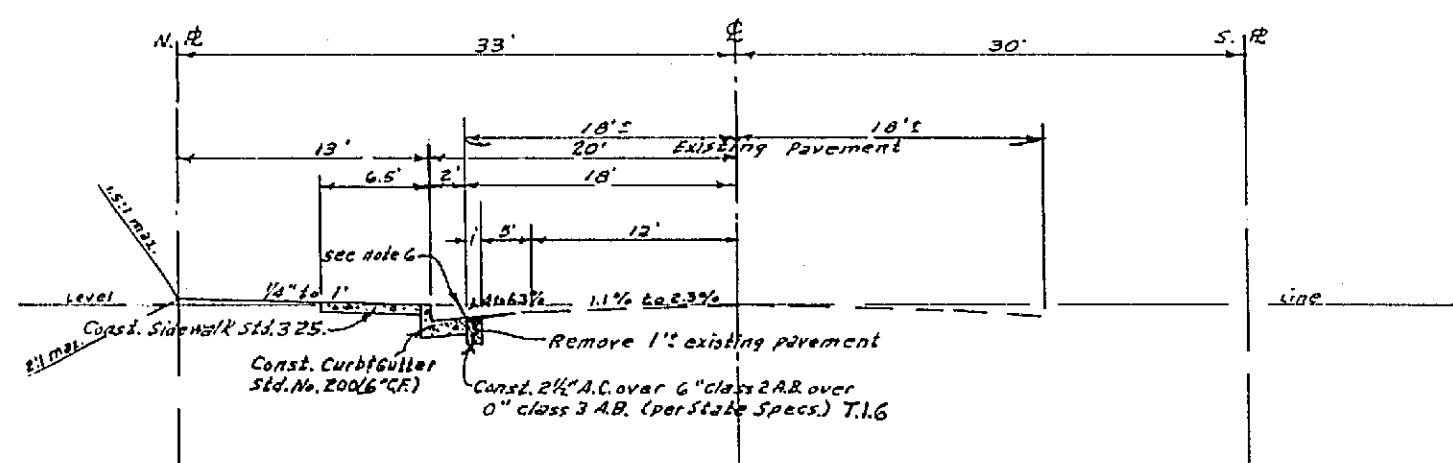
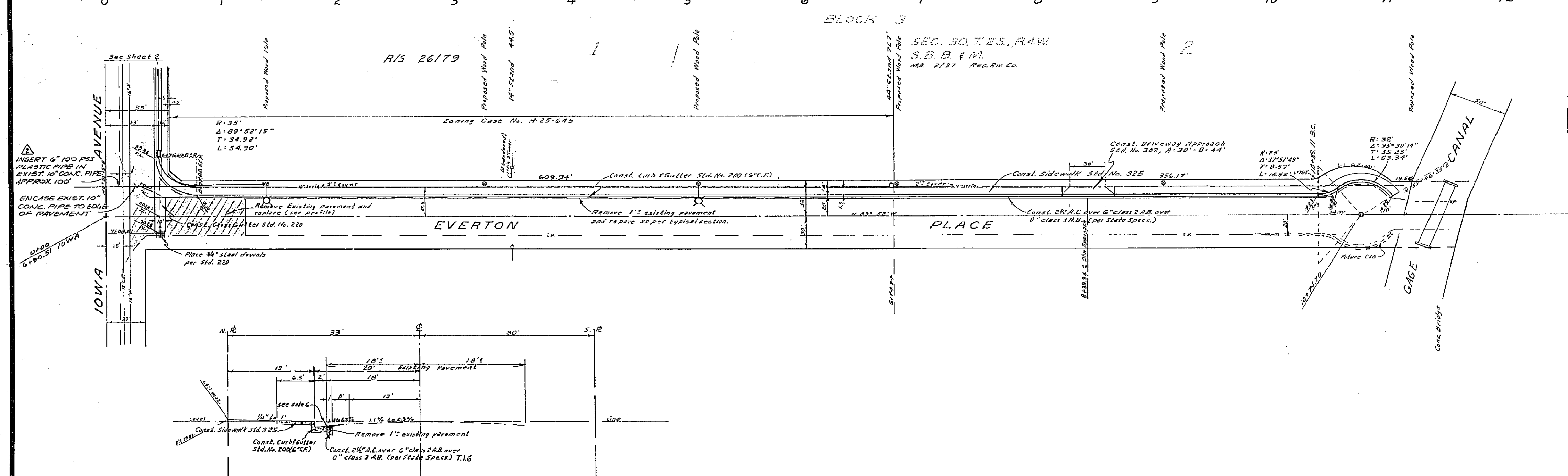
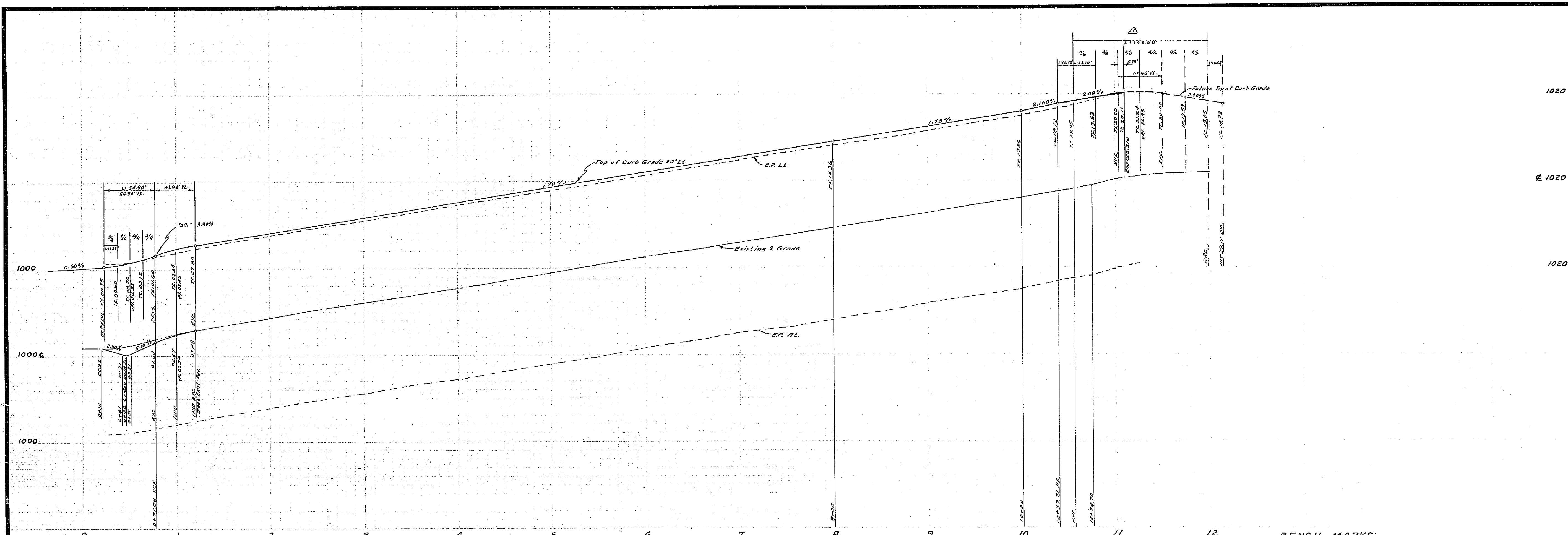
ALBERT A. WEBB ASSOCIATES
 CIVIL ENGINEERS
 RIVERSIDE, CALIFORNIA
 APPROVED BY: [Signature] DATE: 4/19/65
 R.E. No. 3828
 W.O. 64-402 FOR JIMMY TOFMAN P.B. 358

| NO. | DESCRIPTION | DATE |
|-----|----------------------------------|---------|
| 1 | Added Curb, Std. 200 to S 251712 | 4/19/65 |
| 2 | Removed 2 Driveway Approaches | 4/19/65 |
| 3 | Added 2 Driveway Approaches | 4/19/65 |
| 4 | Removed (by others) C.I.P. 287 | 4/19/65 |
| 5 | Added 2 Driveway Approaches | 4/19/65 |
| 6 | Added 2 Driveway Approaches | 4/19/65 |
| 7 | Added 2 Driveway Approaches | 4/19/65 |
| 8 | Added 2 Driveway Approaches | 4/19/65 |
| 9 | Added 2 Driveway Approaches | 4/19/65 |
| 10 | Added 2 Driveway Approaches | 4/19/65 |

CITY OF RIVERSIDE, CALIFORNIA
 DEPARTMENT OF PUBLIC WORKS
 APPROVED BY: [Signature] DATE: 4-19-65
 PARKS DEPARTMENT
 TRAFFIC DIVISION
 ASSISTANT CITY ENG. [Signature]
 PUBLIC UTILITIES ENG. [Signature]

STREET PLAN & PROFILE
UNIVERSITY AVENUE
BETWEEN IOWA AVE & FIW
 SOUTHERLY SIDE
 P.O.R. FOR R-25-645
 DATE: 4-19-65
 HORIZ. SCALE: 1" = 50' VERT. SCALE: 1" = 5'

PROJECT NO. 35 2-22
R-1016
L5-13036
 SHEET 1 OF 2
 FILE NO. 64-402-A



BENCH MARKS: CR 58145
 1. Elev. 997.623 COR. CR 625 FROM CURB TO BENCH MARK
 2. Elev. 996.63 Top Map. Inside Canal Man. Int. University Ave
 4' North of E. of R/W of Sta. 0+00

NOTES & LEGEND: LIGHTING

- Index Light Standard (CR Std. No. 6810) Mar-Belle.
- Includes 2000 Luminaire with 150W lamp.
- Light Pole (CR Std. No. 111301) 10' 3/4"
- indicates 1" Conduit (Rigid Galvanized) or as noted.
- ◆ indicates Red Paint

Light Standard Foundation Details (Drawing #LD1301L)
 All standards shall be checked for clearance of driveways, 1' from end of curb return.
 Spacing of standards shall be as shown on this plan.
 Inspections shall be called for as outlined in Specifications.
 All construction shall comply with City of Riverside Light Pole Street Lighting Specs.
 All cable to be 3/16" dia.
 Luminaires to be 2000 Luminaire, LM 5342 or equal.
 This system to be 240V. Multi-Phase.
 The Traffic Div. will pay \$225.00 towards this installation.

Payment for mast arm lights on wood poles received 3-30-65
 \$75.00 Connection Fee Paid 1-2-65

— indicates Pole Box (CR Std. Traffic Div. 4620) No. 2 "Sparks Analysis Inc. or approved equal.

APPROVED: *[Signature]* DATE: 2/14/72
 MANAGER, GAGE IRRIGATION
 This approval applies to Revision 1

TYPICAL SECTION
 EVERTON PLACE
 NO SCALE

ALBERT A. WEBB ASSOCIATES
 CIVIL ENGINEERS
 RIVERSIDE, CALIFORNIA
 APPROVED BY: *[Signature]* DATE: 1/19/65
 R.E. No. 2875

| | | |
|---------------------|------------------|--------------------------------|
| DESIGNED BY: B.E.L. | DRAWN BY: B.E.L. | CHECKED BY: <i>[Signature]</i> |
| DATE: 1/19/65 | DATE: 1/19/65 | DATE: 1/19/65 |

CITY OF RIVERSIDE, CALIFORNIA
 DEPARTMENT OF PUBLIC WORKS
 APPROVED BY: *[Signature]* DATE: 1-19-65
 DIRECTOR OF PUBLIC WORKS

STREET PLAN & PROFILE
EVERTON PLACE
 NORTHERLY SIDE - IOWA AVE. TO GAGE CANAL
 FOR FOR R-25-645
 PROJECT NO. **R-1016**
 15-13036
 SHEET 3 OF 3
 FILE NO. 64-402-A