

BENCH MARK: 4th C.S. 4th SPRUCE ST. 4th CHICAGO AVENUE ELEV. 911.75

- GENERAL NOTES
- Contractor shall be responsible for the right of way in accordance with the provisions of the City of Riverside.
  - Construction shall be in accordance with the City of Riverside Department of Public Works Specifications.
  - Price cost, fuel cost, and profit shall be included.
  - Grading will require a permit under Ordinance No. 1111.
  - The contractor shall arrange for a suitable site for the disposal of excess material and waste.
  - Final grading shall be checked by the City Engineer.
  - Contractor shall not place any large trees or shrubs on the proposed street.
  - Street name signs and posts to be furnished and installed by the contractor.

QUANTITY ESTIMATE (BY DEVELOPER)

CURB AND GUTTER - STD. DWG. 200-G-C-F	864 LF.
2 1/2" A.C. PAVING AND SEAL COAT (SEE GEN. NTS.)	25,800 SF.
IMPROVED BASE MATERIAL (SEE TOP SECT.) (BY OTHER)	350 CY.
A.C. BASE - 6" FACE (SEE TOP ALLEY SECT.)	700 SF.
2" X 4" BERMWOOD LEADER	90 LF.
6" R.C. GUTTER - STD. DWG. 110	270 SF.
WALKER SPLACER	4 EA.
A.C. BERMWOOD SQUARE - 2" THK.	1740 SF.
BARRICADE - STD. DWG. 100	1 EA.
PAVING TYPE ALLOCATION AND/OR GENERAL	10 EA.
ILLUMINATION (ELEVATION)	1 EA.
ALLEY APPROACH - STD. DWG. 102	170 SF.

QUANTITY ESTIMATE (BY OTHERS)

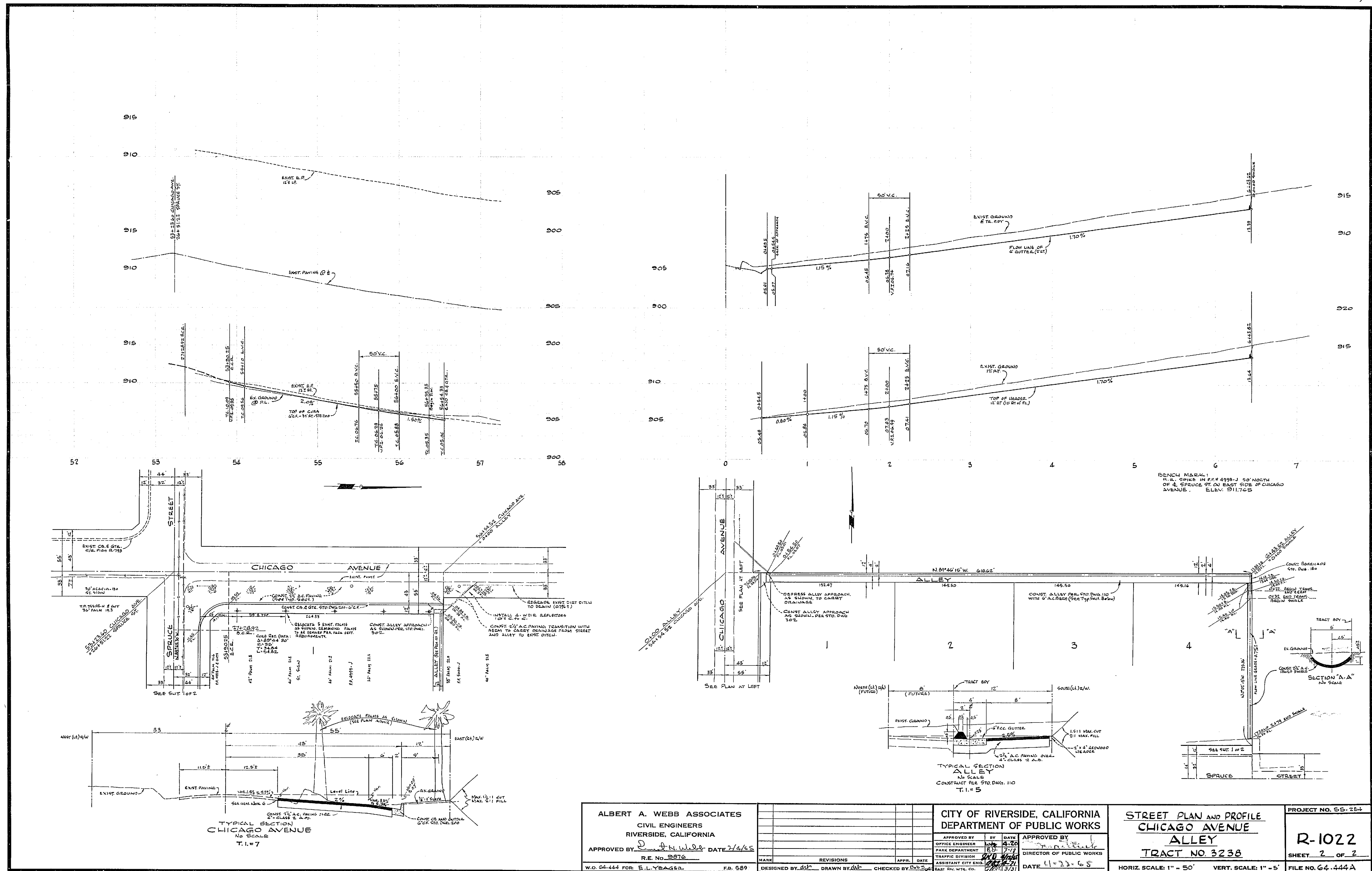
2 1/2" A.C. PAVING AND SEAL COAT (SEE GEN. NTS.) (INCLUDES APPROX. 10% WASTE)	11,000 SF.
IMPROVED BASE MATERIAL (SEE TOP SECT.) (BY OTHER)	120 CY.
PAVING REMOVAL	4000 SF.
18" C.M.B.	1 EA.
36" X 18" C.M.B. RAMP	1 EA.
BASE EXIST. SPACER WALL	1 EA.
2" X 4" BERMWOOD LEADER	50 LF.

NOTICE TO CONTRACTOR

The existence and location of any underground utility, electric structure, or other structure shown on these plans are indicated by a symbol. It is the contractor's responsibility to locate and mark all existing utilities before construction begins on these plans.

The contractor is required to locate and mark all existing utilities before construction begins on these plans.

<b>ALBERT A. WEBB ASSOCIATES</b> CIVIL ENGINEERS RIVERSIDE, CALIFORNIA APPROVED BY: <i>[Signature]</i> DATE: 2/4/65 R.E. NO. 9876 W.O. 444 FOR: E.L. YAGER, P.E. 589		<b>CITY OF RIVERSIDE, CALIFORNIA</b> DEPARTMENT OF PUBLIC WORKS APPROVED BY: <i>[Signature]</i> DATE: 2/4/65 OFFICE ENGINEER: <i>[Signature]</i> DATE: 2/4/65 PARK DEPARTMENT: <i>[Signature]</i> DATE: 2/4/65 TRAFFIC DIVISION: <i>[Signature]</i> DATE: 2/4/65 ASSISTANT CITY ENGINEER: <i>[Signature]</i> DATE: 2/4/65 EAST RIV. W.T. CO.		<b>PROJECT NO. 65-354</b> <b>STREET PLAN AND PROFILE</b> <b>SPRUCE STREET</b> <b>TRACT NO. 3238</b> <b>SHEET 1 OF 2</b> <b>R-1022</b> <b>FILE NO. 64-444 A</b>
TYPICAL SECTION SPRUCE STREET T.L. 7 STA. 27+1882 TO STA. 30+175 (See Chert 1) STA. 30+175 TO STA. 32+947 (See Chert 2)		HORIZ. SCALE: 1" = 50' VERT. SCALE: 1" = 5'		



ALBERT A. WEBB ASSOCIATES  
 CIVIL ENGINEERS  
 RIVERSIDE, CALIFORNIA  
 APPROVED BY *[Signature]* DATE 7/4/65  
 R.E. No. 9876

NO.	REVISIONS	APPR. DATE

CITY OF RIVERSIDE, CALIFORNIA  
 DEPARTMENT OF PUBLIC WORKS  
 APPROVED BY *[Signature]* DATE 4-20  
 OFFICE ENGINEER  
 TRAFFIC DIVISION  
 ASSISTANT CITY ENGINEER  
 DATE 6/23/65

STREET PLAN AND PROFILE  
 CHICAGO AVENUE  
 ALLEY  
 TRACT NO. 3238

PROJECT NO. 64-444  
 R-1022  
 SHEET 2 OF 2  
 FILE NO. 64.444A

HORIZ. SCALE: 1" = 50' VERT. SCALE: 1" = 5'