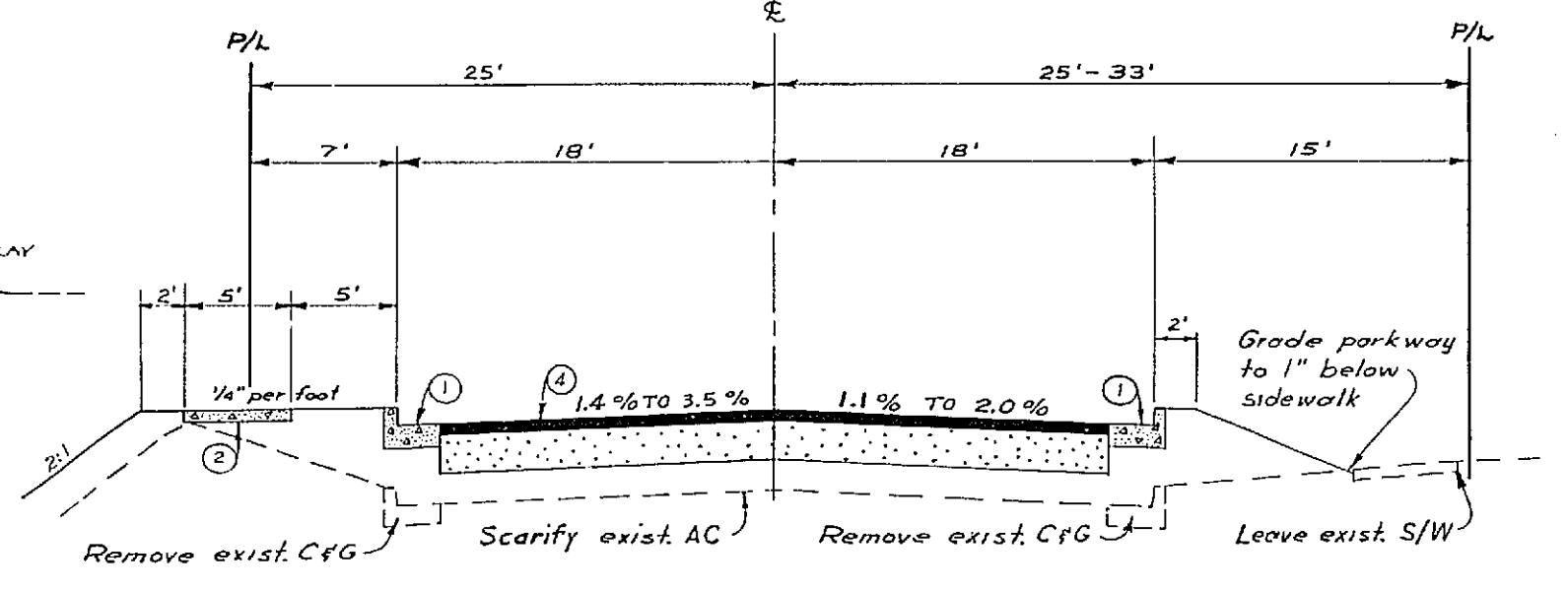
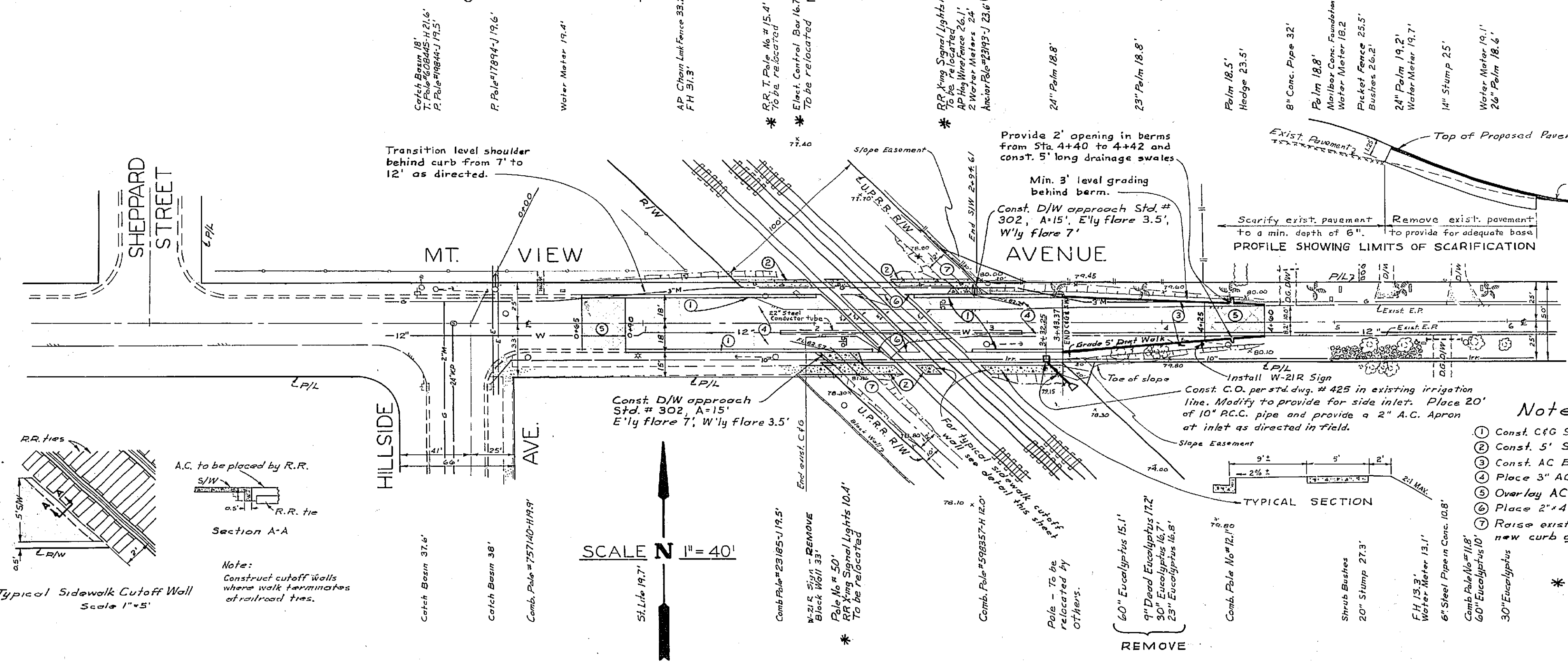


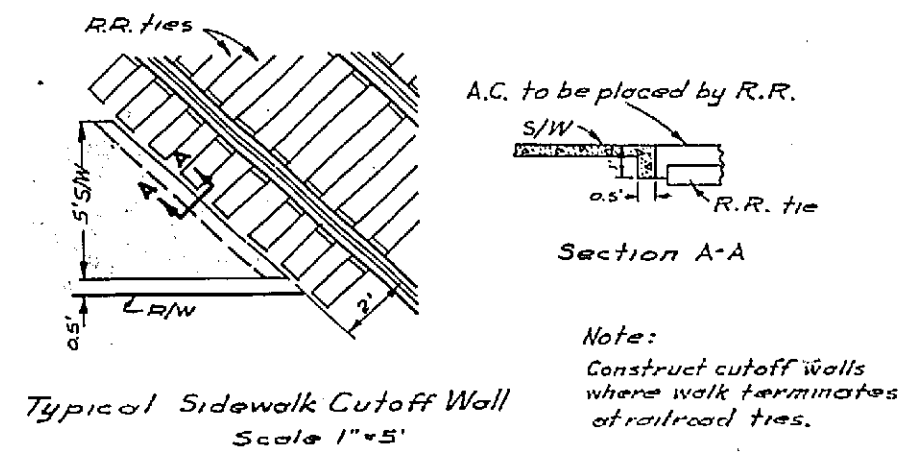
B.M. R.R. spike in pole #12387-J  
 East side of Hillside 325'S  
 of Mt. View Ave.  
 Ref. F.B. R-711 1/8  
 Scale: Horiz. 1"=40'  
 Vert. 1"=4'



TYPICAL CROSS-SECTION

- Notes**
- 1 Const. CrG Std. # 200, 6" C.F.
  - 2 Const. 5' S/W
  - 3 Const. AC Berm Std. # 250
  - 4 Place 3" AC over 12" AB Class 3
  - 5 Overlay AC as required
  - 6 Place 2"x4" Reduced Header
  - 7 Raise exist. Service Road to meet new curb grade, max. slope 8.00%
- \* WORK TO BE DONE BY RAILROAD FORCES

REVISIONS			CITY OF RIVERSIDE, CALIFORNIA DEPARTMENT OF PUBLIC WORKS	
MARK	DATE	DESCRIPTION		
			MT. VIEW AVE. AT U.P.R.R.	
DESIGNED BY	SUBMITTED BY	APPROVED BY	PROJ. NO.	3090
DRAWN BY Sam	P. P. Lauriat			R-1028
CHECKED BY R.R.S.	RECOMMENDED BY	DATE 3-8-67		SHEET 1 OF 1



Typical Sidewalk Cutoff Wall  
 Scale 1"=5'

SCALE N 1"=40'

REMOVE