

STREET LIGHT LEGEND

○ Indicates City of Riverside standard light standard No. 3108 with 2500 L. 2500 Watt Type 'B' Lamp National Incandescent Illumination Co. No. 209233 as specified on drawings.

○ Indicates City of Riverside standard light standard No. 3108 with 1000 L. 1000 Watt Type 'B' Lamp National Incandescent Illumination Co. No. 209233 as specified on drawings.

○ Indicates 1" r.p. gas street conduit, except as noted.

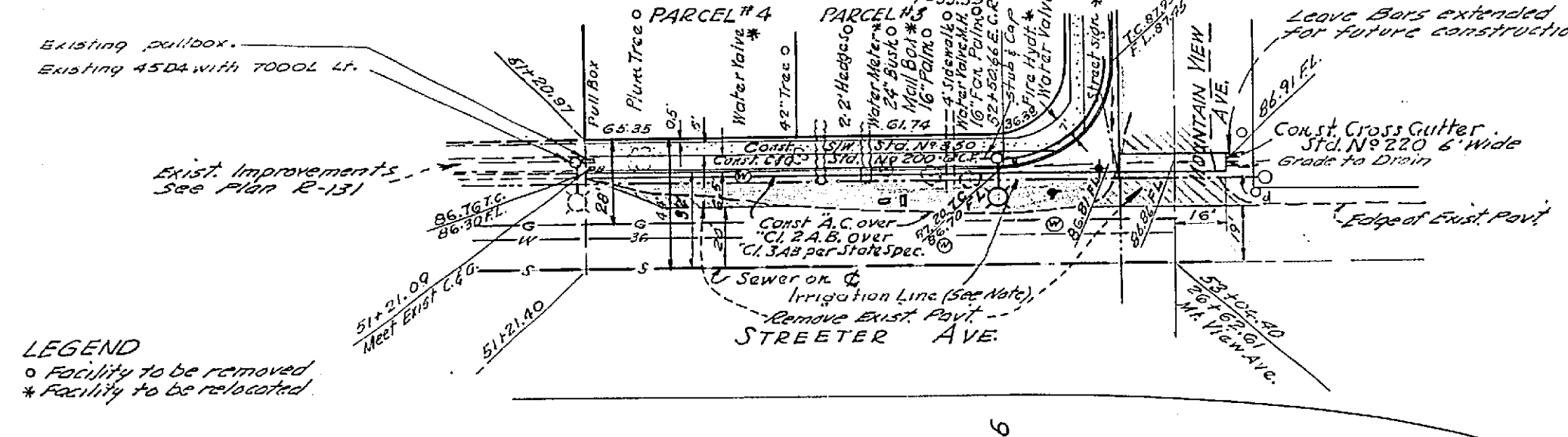
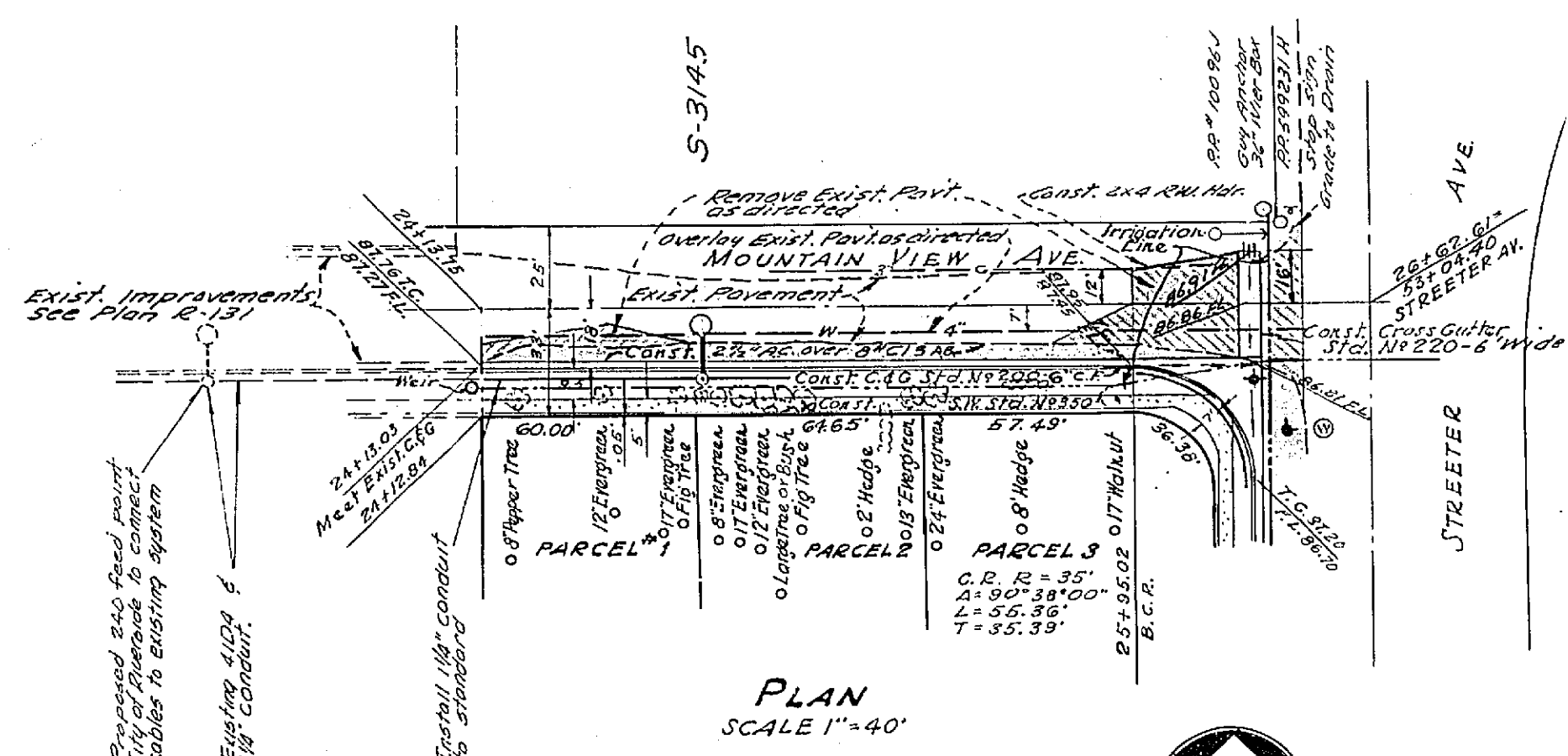
STREET LIGHT NOTES

1. All street light standards and poles to be located in the field.
2. All street light standards shall be checked for clearance of driveways and placed 11' from curb for 20'± distance.
3. See City of Riverside Ord. No. 11-15076, 11-15078, 11-15079 for light standard details and Ord. No. 11-15003 for pole details.
4. All wires to be AWG No. 8 copper.
5. This is a 2 wire 240 volt multiple system.
6. All construction to comply with City of Riverside Street Light Specifications.
7. Inspections to be called for as outlined in specifications.
8. Feed points to be confirmed at time of construction.
9. See Ord. No. 15-11272 & 15-100 (traffic) for existing lighting system.

PROFILE
SCALE HORIZ. 1"=40'
VERT. 1"=4'

GENERAL NOTES

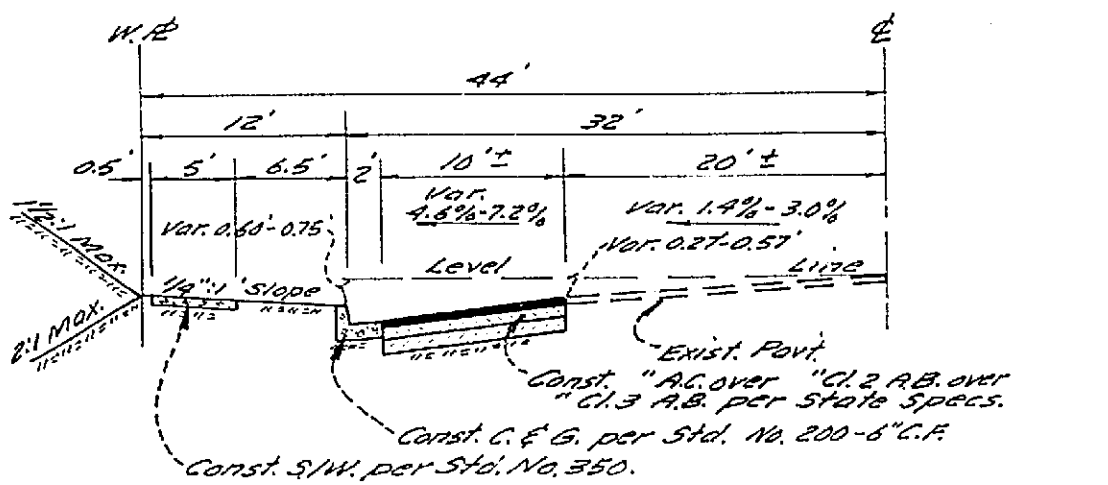
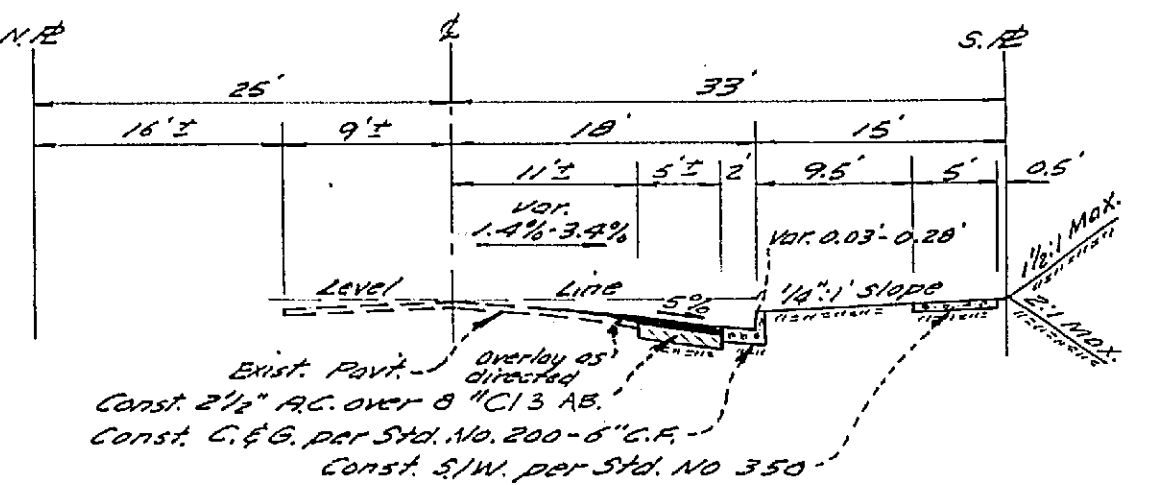
1. It shall be the responsibility of the contractor to clear the right of way in accordance with the provisions of law as it affects each utility including irrigation lines and appearances and at no cost to the city.
2. Construction shall be in accordance with the City of Riverside, Department of Public Works, Specifications No. 461 and Standard Drawings.
3. Prime coat, seal coat, and paint binder are required.
4. Grading will require a permit under Ordinance No. 3093 for a cut or a fill exceeding 100 cubic yards or a fill over one foot in depth.
5. Trim edge of existing pavement, where new paving joins existing pavement to a clean straight line. Construct match-up paving as shown and overlay as directed in the field to produce a smooth crown section. The engineer estimates the overlay to be 4 tons ±.
6. The developer shall arrange for a test of the soil at the sub-grade level by a soils engineer. Depth and type of cover shall be determined by the soils engineer and submitted to the City of Riverside for approval.
7. The finished sub-grade shall have a compaction of not less than 90% for a depth of 0.5 foot as determined by fast method No. California 216 immediately prior to the placement of the cover.
8. Remove exist. pavement shown thus



PLAN
SCALE 1"=40'

PLAN
SCALE 1"=40'

NOTE: Conc. Irrigation Line in Streeter Ave. between Sta. 51+26.09 to Sta. 52+85.00 to be abandoned & removed by Contractor City Irrigation Dept. to provide pipe seal at present junction (Sta. 52+85.00) at developer's expense. Relocation of irrigation facilities to be done by City Irrigation Division at developer's expense.



TYPICAL SECTION
MOUNTAIN VIEW AVENUE
No Scale

TYPICAL SECTION
STREETER AVENUE
No Scale

Approved by Richard L. Cresson
City Irrigation Division

Approved By <u>Don Campbell</u> City Supt. & Chief Engr. Date 5-4-65		CRAWLEY & HAWKINS SURVEYORS AND ENGINEERS Riverside, Calif. Approved <u>George A. Crawley</u> 3-15-65	
REVISIONS		CITY OF RIVERSIDE	
MARK	DATE	DEPARTMENT	
		STREET PLAN & PROFILE MOUNTAIN VIEW AVENUE STA. 24+13.75 TO STA. 26+62.61 STREETER AVENUE STA. 51+21.40 TO STA. 53+04.21 RECORD OF SURVEY NO. 845	
DESIGNED BY	SUBMITTED BY	APPROVED BY	
DRAWN BY	TRAFFIC DIV.	55258 (STREETER AVENUE)	
CHECKED BY	DATE	R-1037 15-13047	

Bench Mark:
P.M. Nail in East curb Streeter Ave. 135'± S. of
& of Mountain View Ave. - Elev. 78d.82'