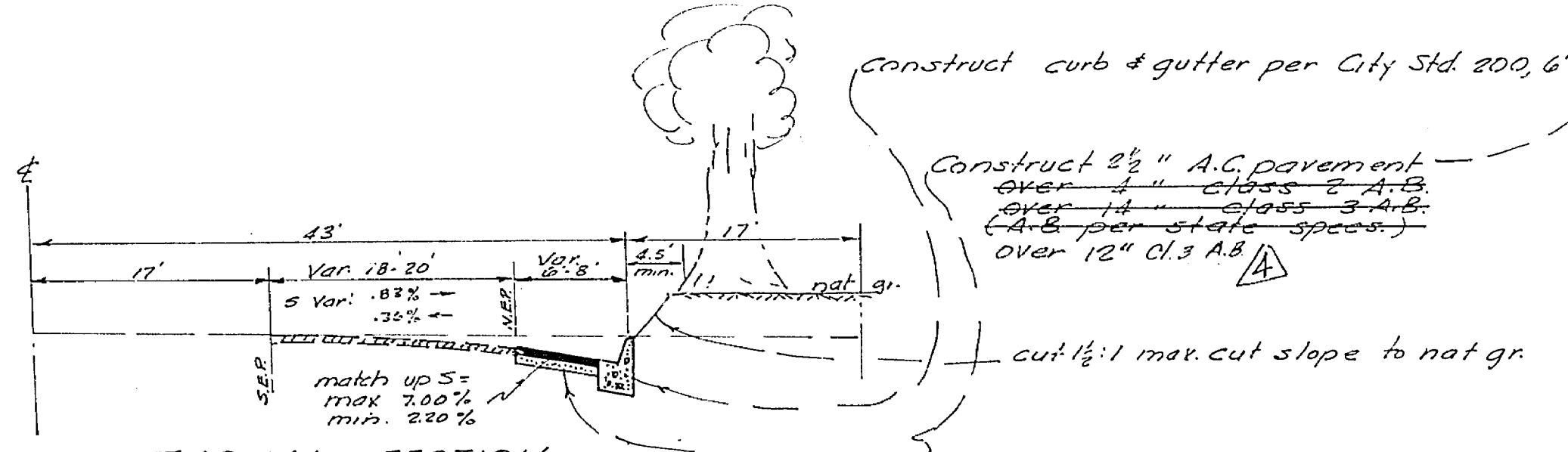
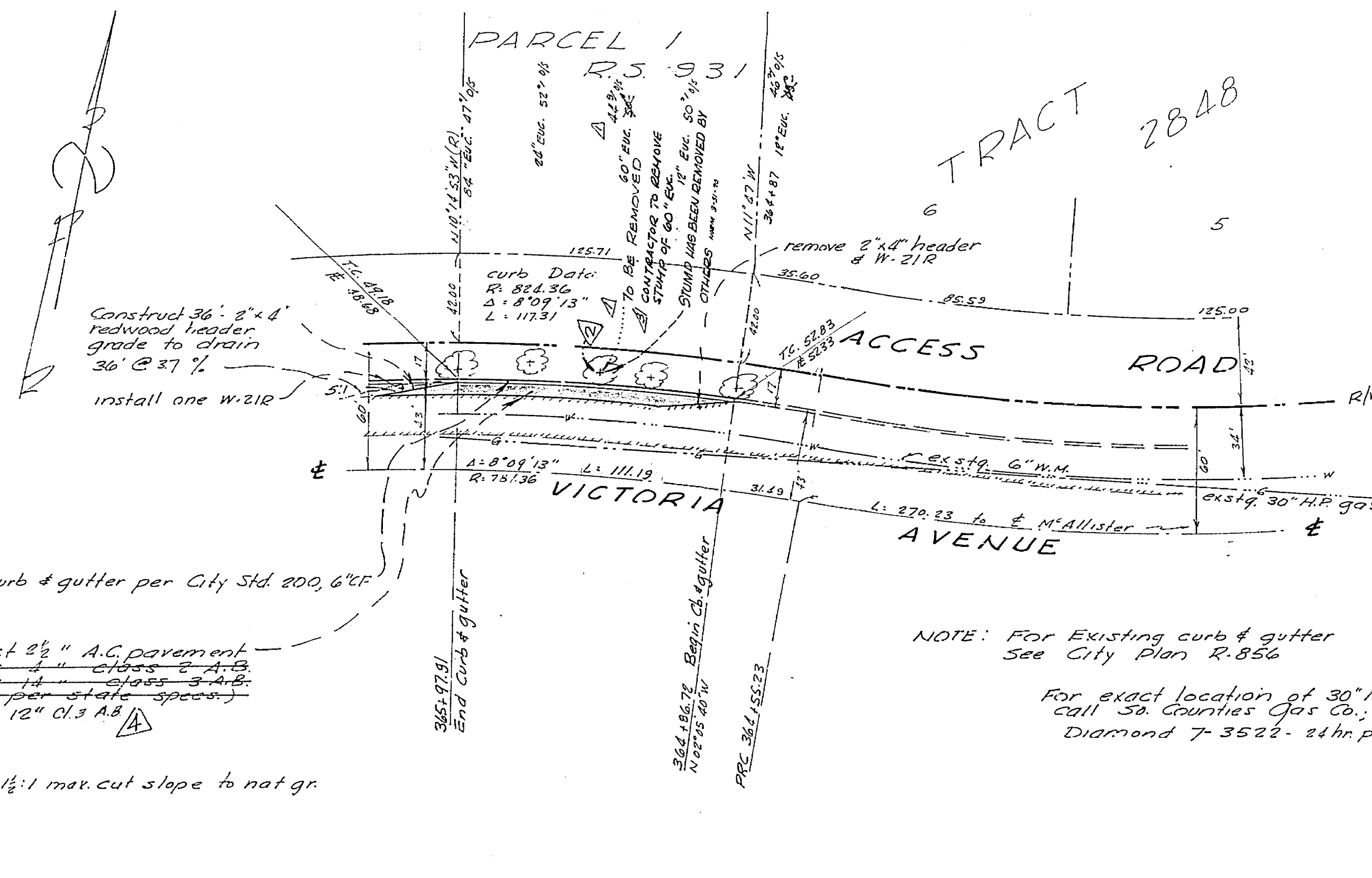


PLAN
SCALE 1" = 40'

GENERAL NOTES

- All construction shall be in accordance with Standard Specifications No. 461 of the City of Riverside, Department of Public Works.
- Trim edge of pavement to clean straight line. Construct match up paving and overlay existing paving as directed to produce smooth crown section.
- It shall be the responsibility of the Contractor to clear the right-of-way in accordance with the provisions of law as it affects each utility including irrigation lines and appurtenances and at no cost to the City.
- Prime Coat, Paint Binder and Seal Coat are required.
- Grading will require a permit under Ordinance 3093 for a cut, or fill exceeding 100 cubic yards or a fill over one foot in depth.
- The finish subgrade shall have a compaction of not less than 90% for a depth of 0.5 feet as determined by Test No. 1 California 616F immediately prior to placement of cover.
- Benchmark - chiseled x on F.H. flange; s.w. corner of McAllister @ Victoria Avenue El. 861.28



TYPICAL SECTION
SOUTH BOUND LANES
VICTORIA AVE
no scale
TI = 7.0

NOTE: For Existing curb & gutter
See City Plan R-856

For exact location of 30" N.P. gas main
call So. Counties Gas Co., Indio Calif.
Diamond 7-3522 - 24 hr prior to excavation.

CORRECT ON 1/2 20" AUC. W/ 10' TO BE REMOVED 60" AUC. REMOVED BY CITY FORCES 1/10/65		CITY OF RIVERSIDE, CALIFORNIA DEPARTMENT OF PUBLIC WORKS		PROJECT NO. R-1100
ADD. NOTE: CONTRACTOR TO REMOVE STUMP OF 60" AUC. "RECY" W/ 10' V.C.		APPROVED BY: [Signature] OFFICE ENGINEER TRAFFIC DIVISION ASSISTANT CITY ENG.		PLAN AND PROFILE N.W. 2 CURB - VICTORIA AVE 270' WESTERLY OF McALLISTER STREET Approved: Robert L. Taylor RCE 10-170 9/23/65
change bars required to 12" C.I. 3 A.B.		DATE: 9-23-65		SHEET 1 OF 1
DESIGNED BY: [Signature]		DRAWN BY: [Signature]		FILE NO.