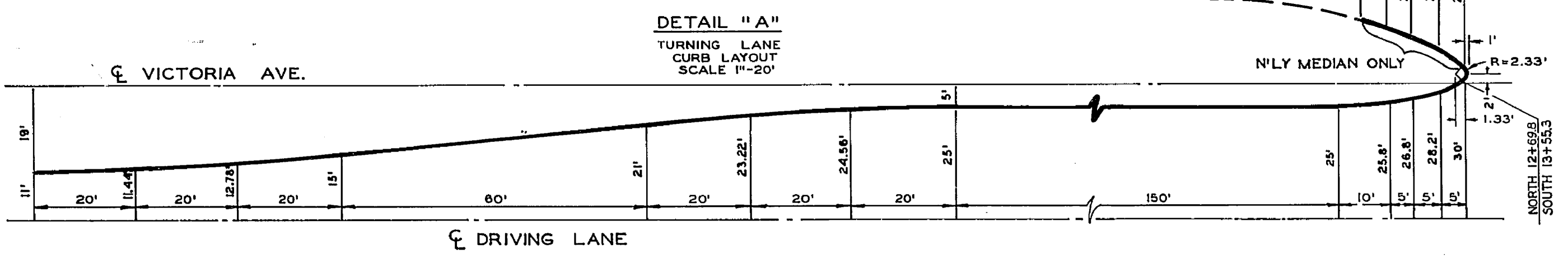
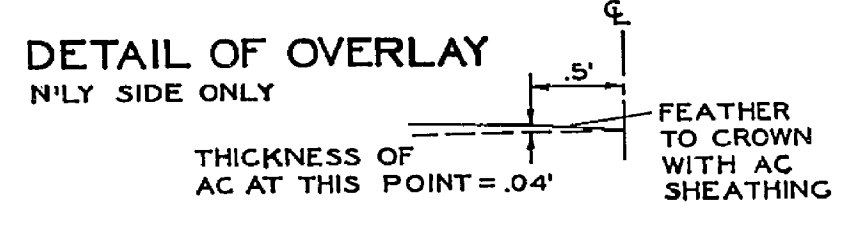
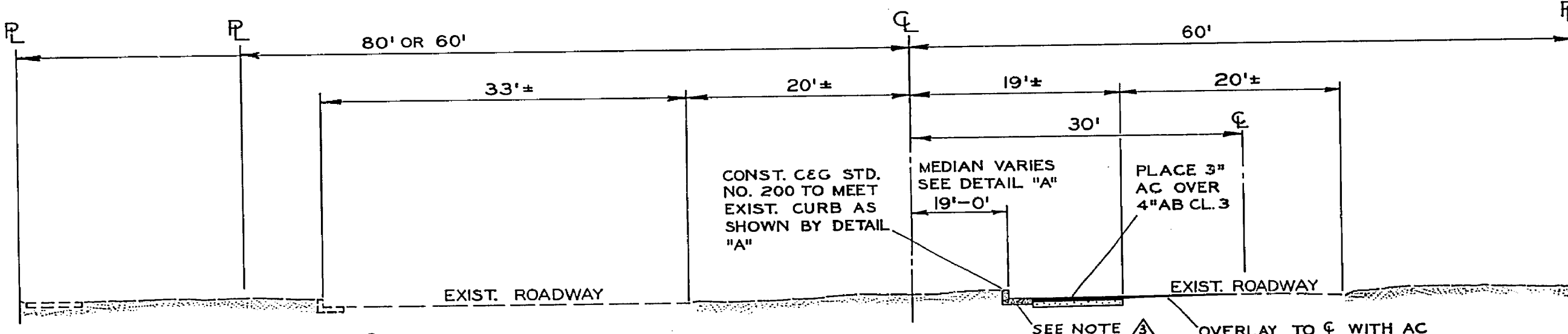
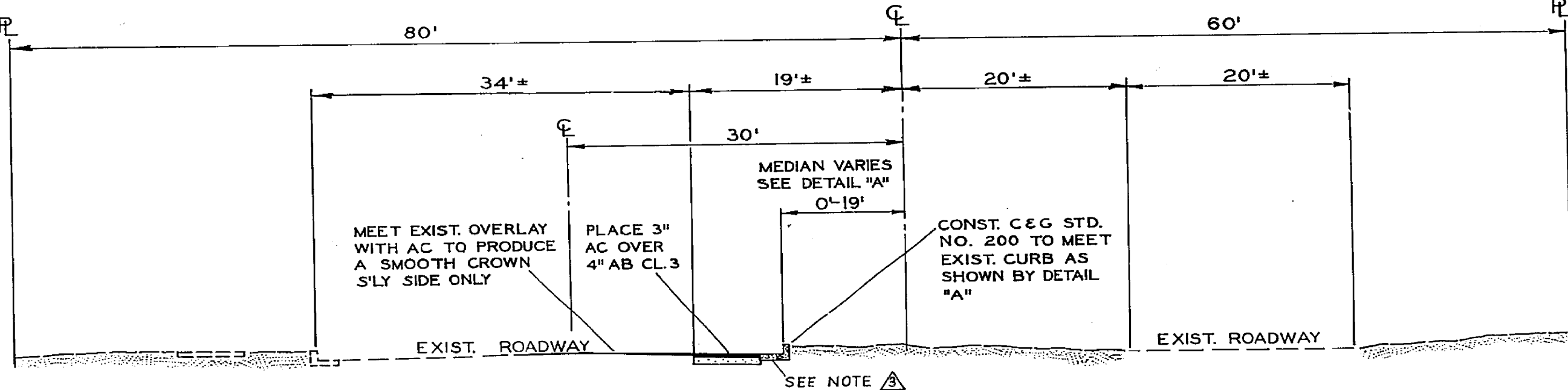
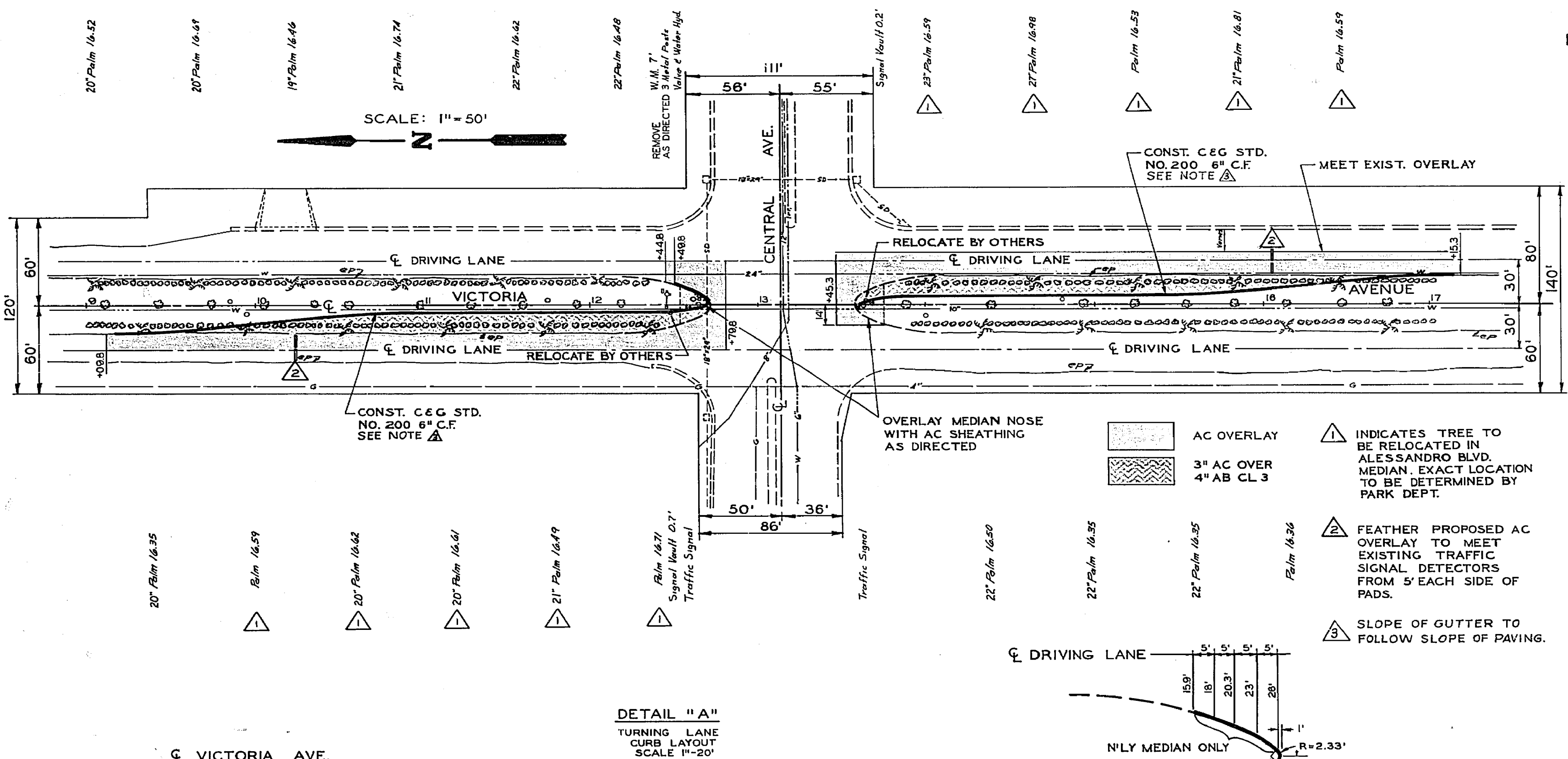


QUANTITIES

738 L.F.	CURB & GUTTER
75 C.Y.	AGGREGATE BASE, CLASS 3
150 TONS	ASPHALTIC CONCRETE
10 EA.	PALM TREE RELOCATION

B.M. 946.507 SPK. IN COMB. P # 1999-J
APPROX. 100' N'LY INTER. OF CENTRAL
& VICTORIA. F.B. C-1 71-75



CITY OF RIVERSIDE, CALIFORNIA DEPARTMENT OF PUBLIC WORKS		PROJECT NO. 3092
APPROVED BY OFFICE ENGINEER PARK DEPARTMENT	BY DATE 11-22-65	APPROVED BY DIRECTOR OF PUBLIC WORKS
TRAFFIC DIVISION ASSISTANT CITY ENG.	DATE 11-22-65	
DESIGNED BY [Signature] DRAWN BY [Signature] CHECKED BY [Signature]		HORIZ. SCALE: 1" = 50' VERT. SCALE: 1" = 2'
VICTORIA AVENUE CENTRAL AVE INTERSECTION		R-1108 SHEET 1 OF 1 S.S. PROJECT NO. 281