

ASSESSMENT NO. 453

DIAGRAM

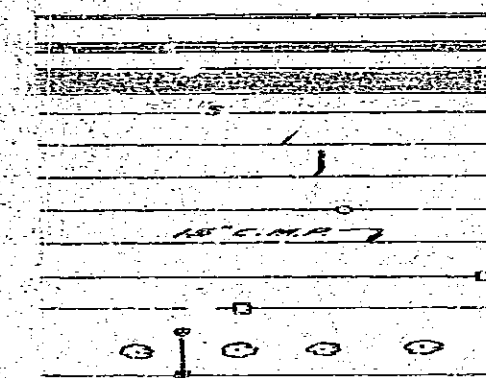
EXHIBITING OLD RANCH ROAD 1911 ACT IMPROVEMENT DISTRICT IN THE CITY OF RIVERSIDE, CALIFORNIA, AND THE WORK WHICH HAS BEEN DONE PURSUANT TO THE CONTRACT BETWEEN THE SUPERINTENDENT OF STREETS OF SAID CITY AND E.L. YEAGER CO. DATED JUNE 10, 1958, FOR THE CONSTRUCTION OR INSTALLATION OF CURB AND GUTTER, SIDEWALK, PAVING, SEWER MAIN, STORM DRAIN, TREES, STREET LIGHTS, AND APPURTENANCES; AND THE REMOVAL OF TREES, CONCRETE FOUNDATION, FENCE, AND IRRIGATION LINE.

AS IS MORE PARTICULARLY DESCRIBED IN SAID CONTRACT, TO WHICH REFERENCE IS HEREBY MADE FOR FURTHER PARTICULARS. SAID DIAGRAM ALSO SHOWS EACH SEPARATE LOT OR PARCEL OF LAND WITHIN THE LIMITS OF THE ASSESSMENT DISTRICT, AND THE DIMENSIONS OF EACH SUCH LOT OR PARCEL OF LAND, AND THE RELATIVE LOCATION OF THE SAME TO THE WORK DONE. EACH LOT OR PARCEL OF LAND IS NUMBERED IN CIRCLES TO CORRESPOND TO THE RED INK NUMBER IN THE ASSESSMENT. HEREIN FIGURES NEXT TO PROPERTY LINES SHOW LENGTH OF SAID LINES IN FEET AND DECIMALS THEREOF. THE MARK (') MEANS FEET. PROPERTY LINES THAT DIFFER FROM THE RECORDED SUBDIVISIONS ARE SHOWN BY BROKEN LINES. THE DISTRICT BENEFITED IS BOUNDED BY A HEAVY DASHED LINE. PROPERTY INCLUDED IN THIS ASSESSMENT IS SHOWN ON THE FOLLOWING RECORDED MAPS:

SCENIC HOMES ACRES		M.B. 10/55 REC. RIV. CO.
R/S 23/82		R/S 29/8
R/S 26/41		R/S 29/7
R/S 26/43		R/S 29/9
R/S 27/50		R/S 29/10
R/S 27/52		

HEREIN THE DIFFERENT KINDS OF WORK PERFORMED ARE SHOWN AS FOLLOWS:

- COMB. CURB AND GUTTER
- SIDEWALK
- PAVING
- V.C.P. SEWER MAIN
- " " " AND WYE BRANCH
- " " " HO. CONN. LAT.
- " " " STD. MANHOLE
- C.M.F. STORM DRAIN
- " " " CATCHBASIN
- " " " CLEANOUT BOX



TREE PLANTING
STREET LIGHTING SYSTEM
HEREIN THE DIFFERENT KINDS OF WORK PERFORMED AND NOT SHOWN ARE AS FOLLOWS:

- REMOVAL OF TREES
- " " IRRIGATION LINES
- " " FENCES
- " " CONCRETE FOUNDATIONS

HERE FOLLOWS A STATEMENT OF AMOUNTS OF DIFFERENT KINDS OF WORK DONE PURSUANT TO THE HERE-IN-BEFORE IDENTIFIED CONTRACT AND TO RESOLUTION OF INTENTION NO. 8114, ADOPTED BY THE CITY COUNCIL OF THE CITY OF RIVERSIDE, CALIFORNIA ON THE 4TH DAY OF MARCH, 1958.

- 2,291.18 LIN. FT. COMB. CURB AND GUTTER RIV. STD. 108
- 19,193.70 SQ. FT. SIDEWALK RIV. STD. 108-A
- 36,890.00 SQ. FT. SEALCOAT PAVING
- 1,240.00 LIN. FT. 8" V.C.P. SEWER MAIN
- 23 EA. 8" X 4" WYE BRANCHES
- 755 LIN. FT. 4" V.C.P. HOUSE CONNECTION LATERALS
- 6 EA. MANHOLES RIV. STD. 141-D
- 283 LIN. FT. 15" C.M.F. STORM DRAIN PIPE
- 1 EA. CATCHBASIN RIV. STD. 140-D
- 1 EA. CLEANOUT BOX RIV. STD. 140-E
- L.S. TREE PLANTING
- L.S. ORNAMENTAL STREET LIGHTING SYSTEM
- L.S. TREE REMOVAL
- L.S. CONCRETE FOUNDATION REMOVAL
- L.S. FENCE REMOVAL
- L.S. PRIVATE 8" IRRIGATION LINE REMOVAL

I HEREBY CERTIFY THAT THE ABOVE WORK WAS DONE IN ACCORDANCE WITH LINES AND GRADES FURNISHED OR APPROVED BY ME, AND THAT THE DIAGRAM OF THE ASSESSMENT DISTRICT AND THE QUANTITIES OF WORK SHOWN HEREON ARE CORRECT.

J. M. ...
CITY ENGINEER OF THE
CITY OF RIVERSIDE, CALIFORNIA

DIAGRAM RECEIVED:
THIS 4TH DAY OF DECEMBER, 1958.
R. M. ...
SUPERINTENDENT OF STREETS OF THE
CITY OF RIVERSIDE, CALIFORNIA

RECORDED:
AT 4:00 O'CLOCK, P.M.,
THIS 14TH DAY OF JANUARY, 1959.
R. M. ...
SUPERINTENDENT OF STREETS OF THE
CITY OF RIVERSIDE, CALIFORNIA

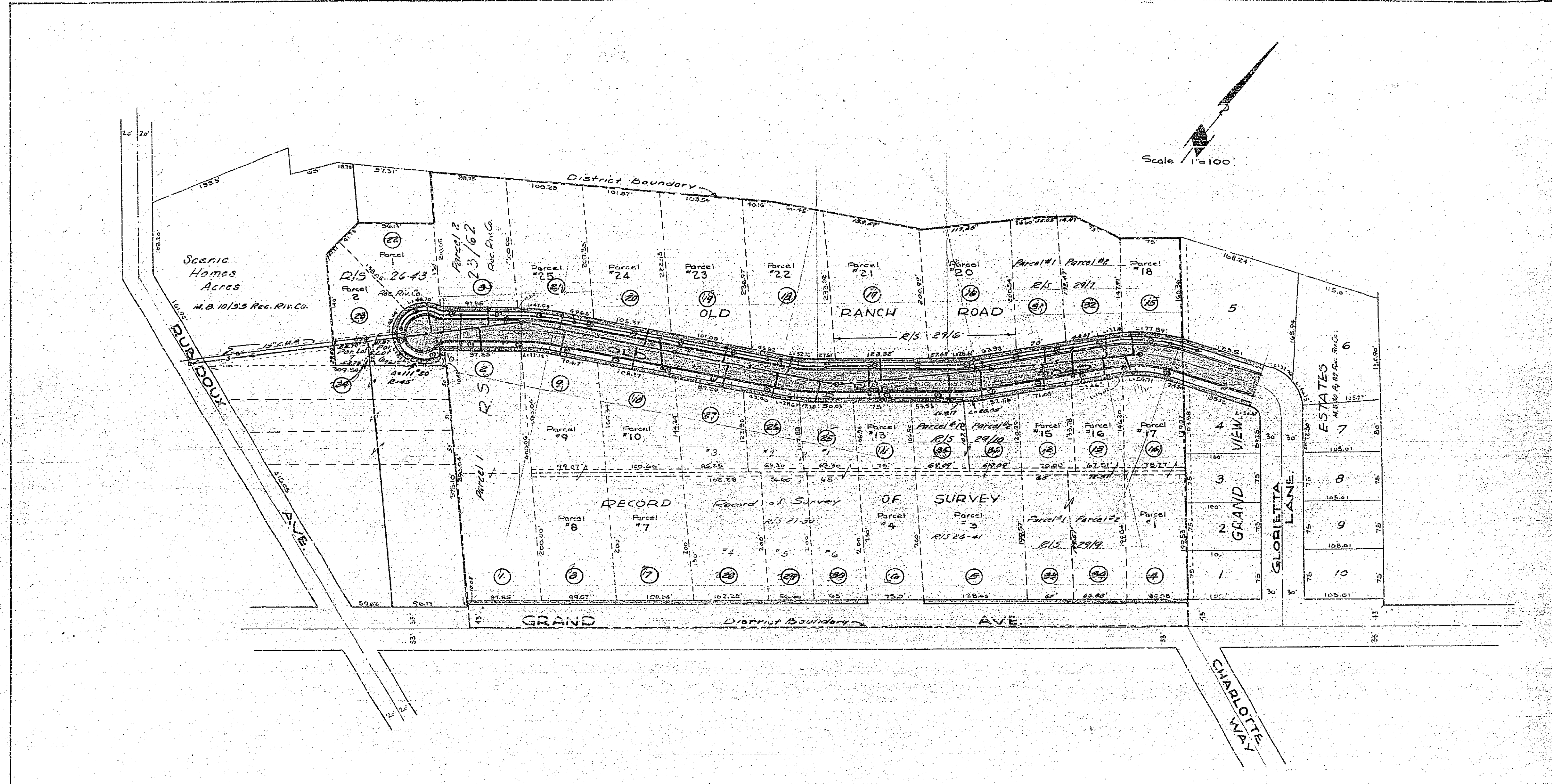


DIAGRAM
 OF THE PROPERTY AFFECTED OR BENEFITED BY THE WORK IN THE
 OLD RANCH ROAD 1911 ACT IMPROVEMENT DISTRICT

CITY OF RIVERSIDE CALIFORNIA
 DEPARTMENT OF PUBLIC WORKS

OLD RANCH ROAD
 1911 ACT
 IMPROVEMENT DISTRICT

APPROVED BY
[Signature]
 DIRECTOR OF PUBLIC WORKS

R-110B

DATE: SHEET 2 OF 2

