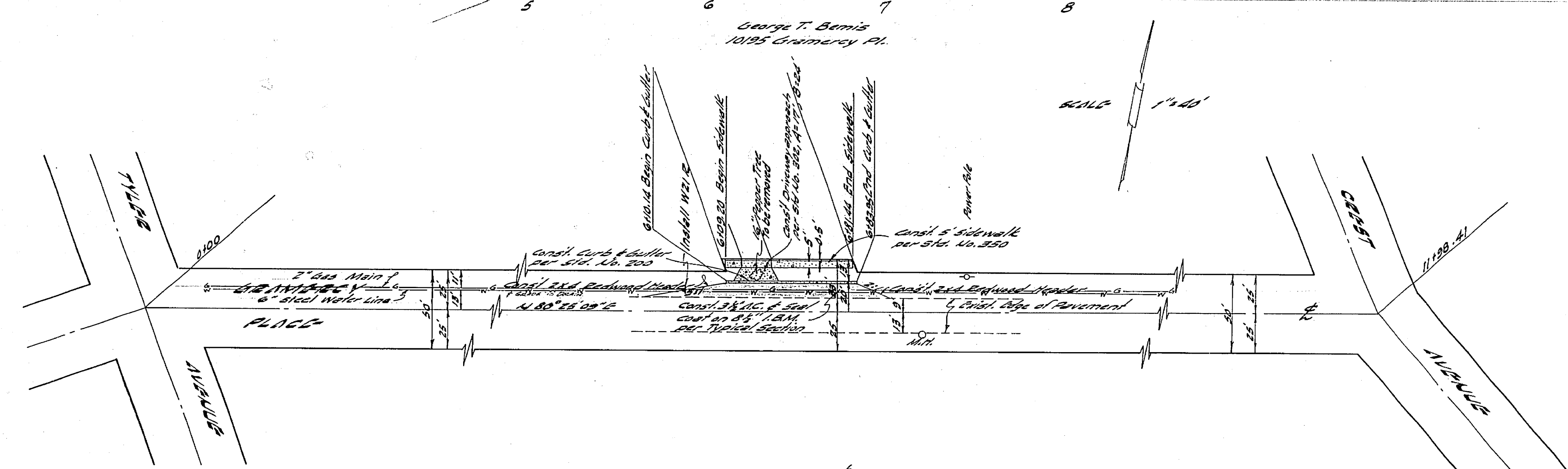
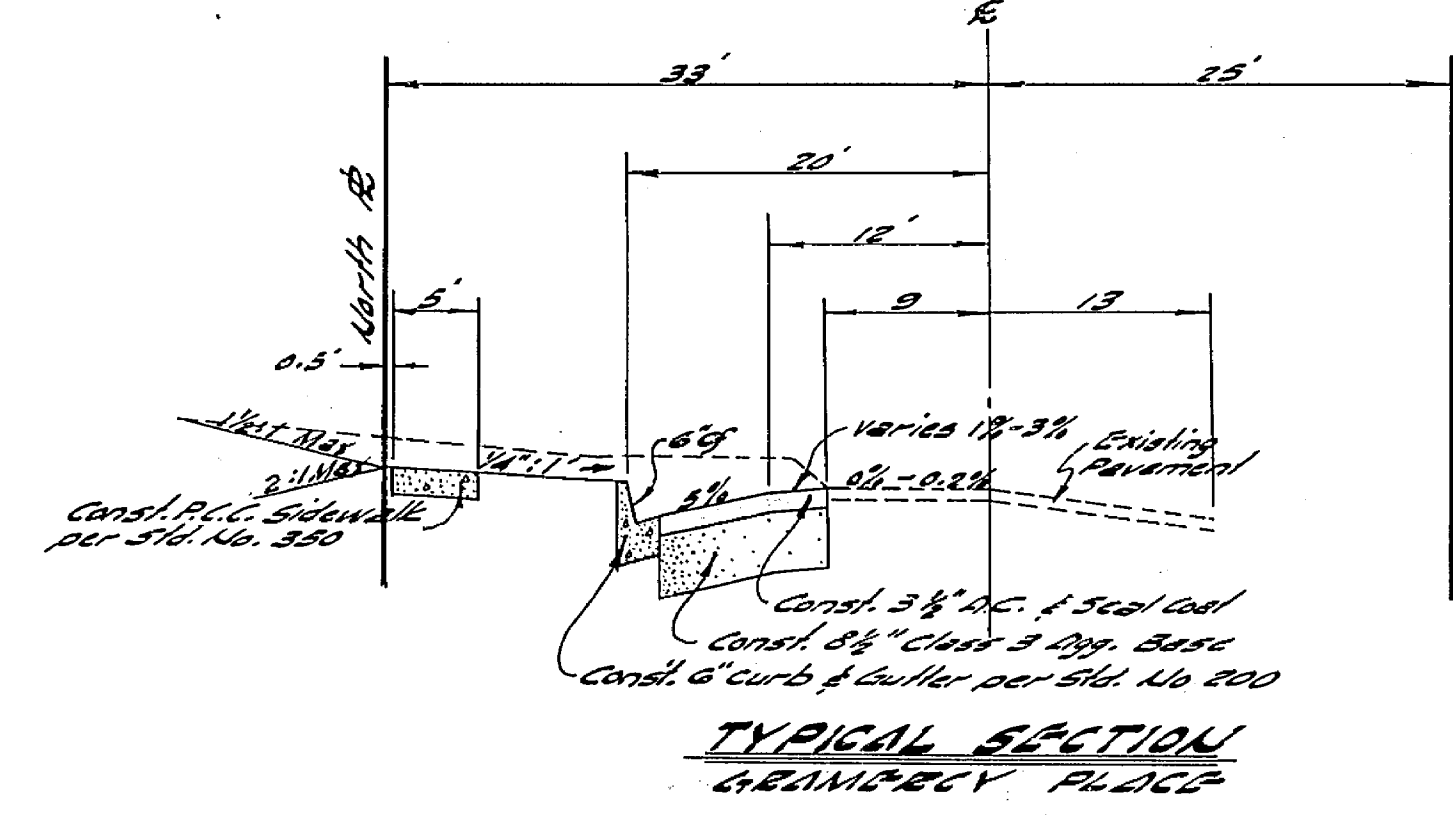


BEUCH MARK E. E. Spike in Pole #69465 N. N.W. Corner of Gramercy and Tyler Elev. 768.617



- GENERAL NOTES**
1. It shall be the responsibility of the contractor to clear the E/W in accordance with the provisions of law as it affects each utility including irrigation lines and appurtenances and at no cost to the City.
 2. Construction shall be in accordance with the City of Riverside Department of Public Works Specifications No. 601 and Standard Drawings.
 3. Prime coat, seal coat and curbed binder are required.
 4. Grading will require a permit under Ordinance 3023 for a cut of fill exceeding 100 cubic yards or a fill of over 1 foot in depth.
 5. Trim edge of existing pavement, where new paving joins existing pavement, to a clean straight line. Construct match up paving as shown.



RIDDOLL, STEPHAN & HOEHNING
Civil Engineering and Surveying
San Bernardino, California
APPROVED *Wendell G. Steinhilber*
ECE 14811 DATE 11-1-65

REVISIONS		CITY OF RIVERSIDE, CALIFORNIA DEPARTMENT OF PUBLIC WORKS
NO.	DATE	
		CURB & GUTTER IMPROVEMENT STAGHOLE LT. TO STAGHOLE RT. 10195 GERMERCY PLACE GERMERCY PLACE
DESIGNED BY <i>JOH</i>	SUBMITTED BY <i>William B. Sanderson</i>	
DRAWN BY <i>John</i>	REVIEWED BY <i>Wendell G. Steinhilber</i>	PROJECT NO. E-114
CHECKED BY <i>John</i>	RECOMMENDED BY <i>Wendell G. Steinhilber</i>	DATE 11-1-65
		SHEET NO. 1 OF 2