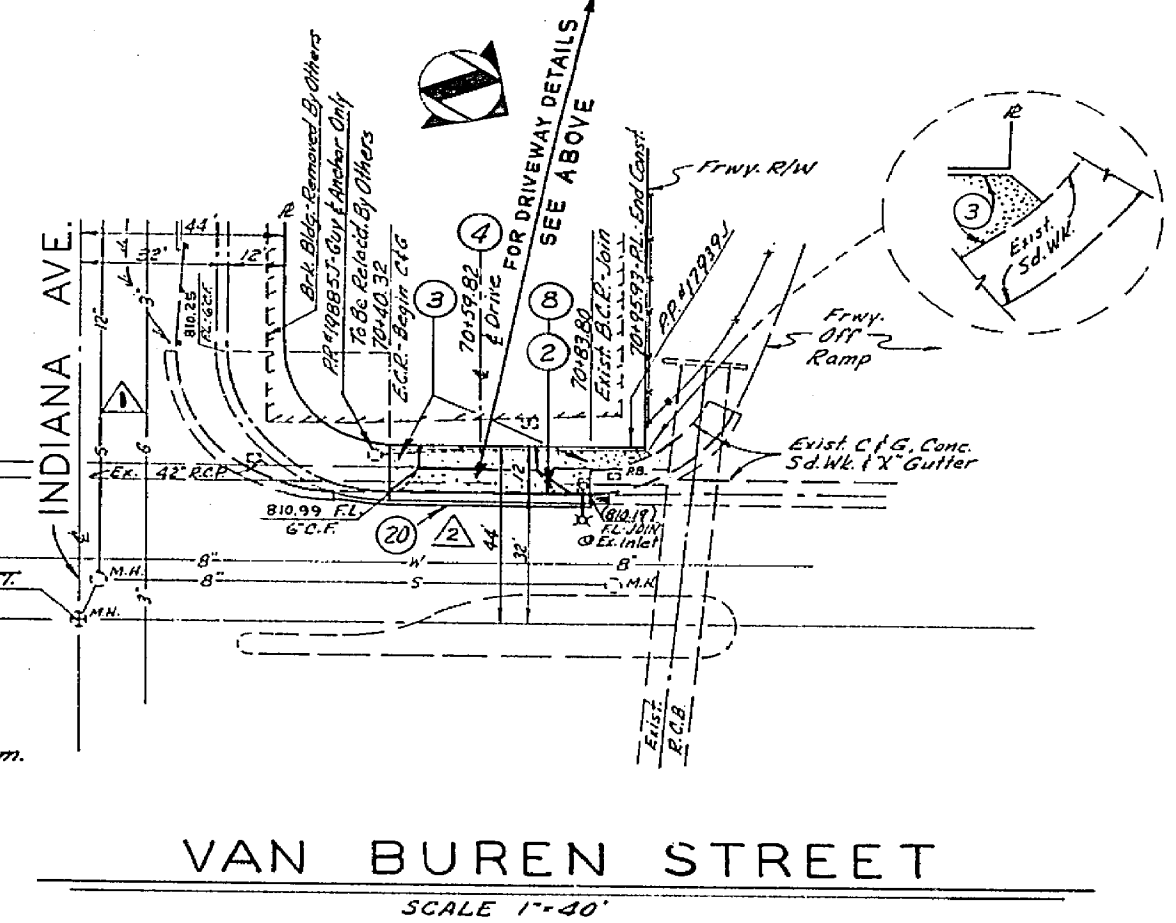
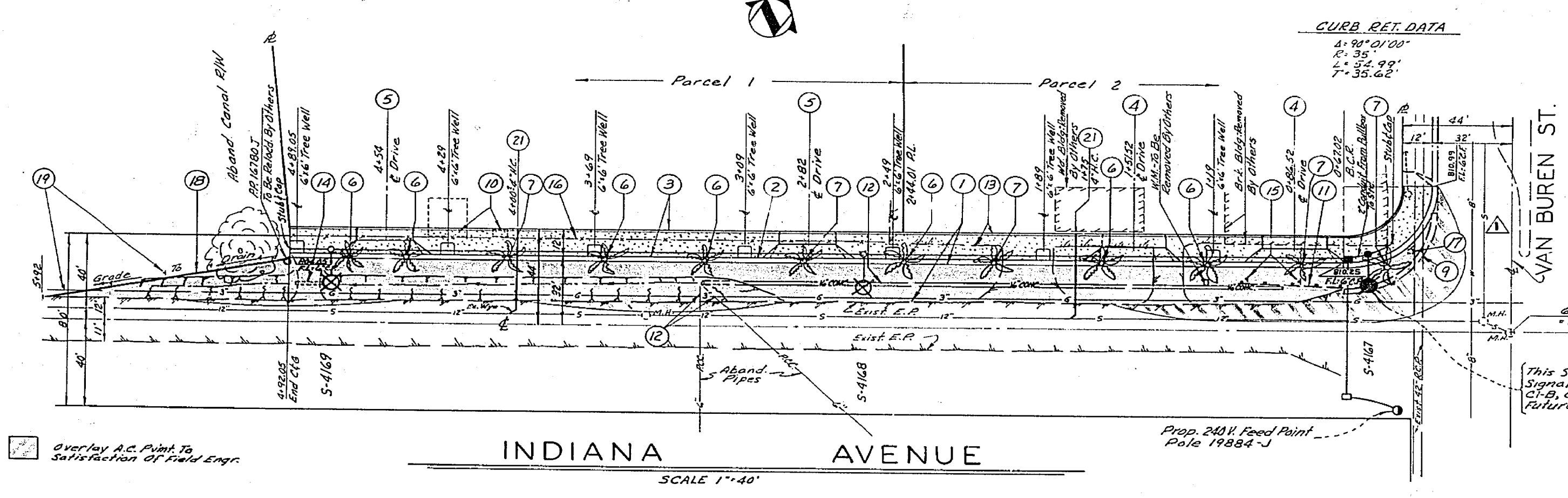
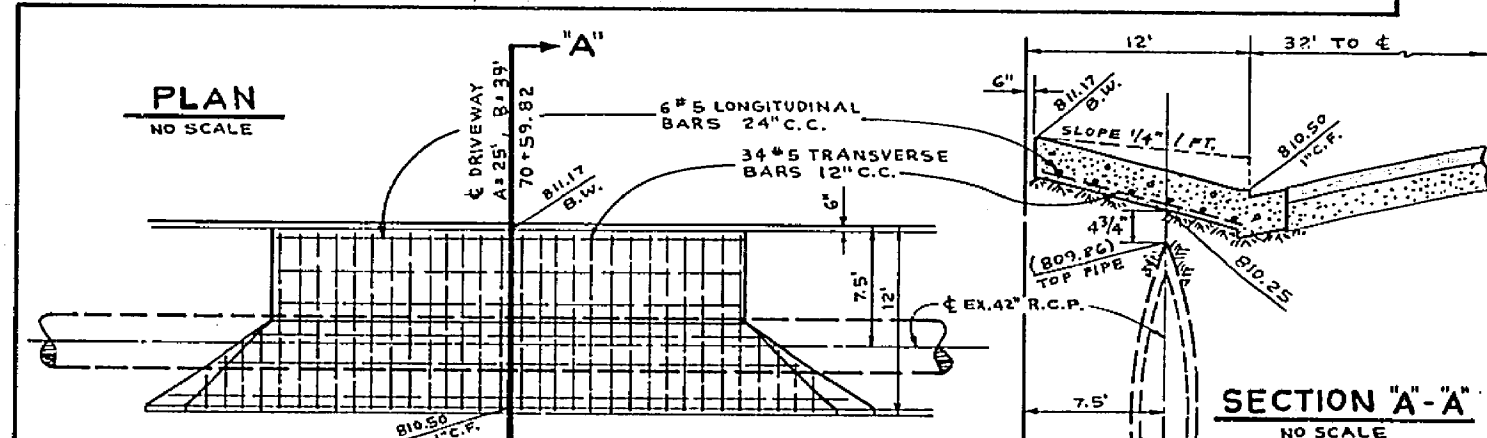
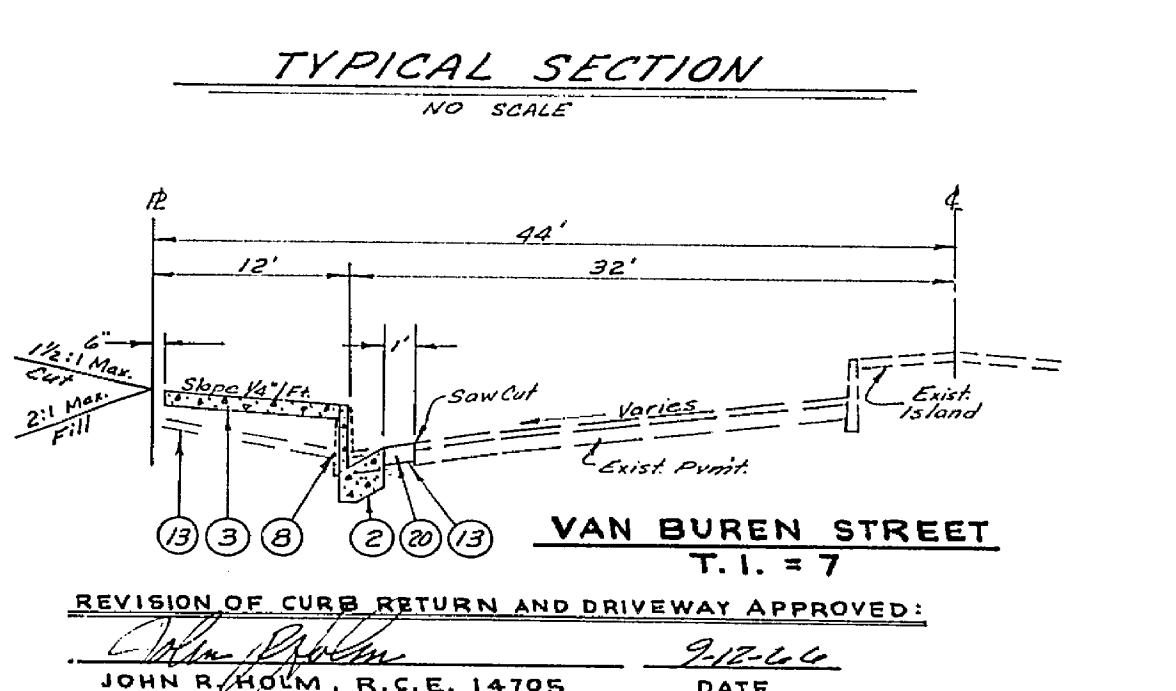
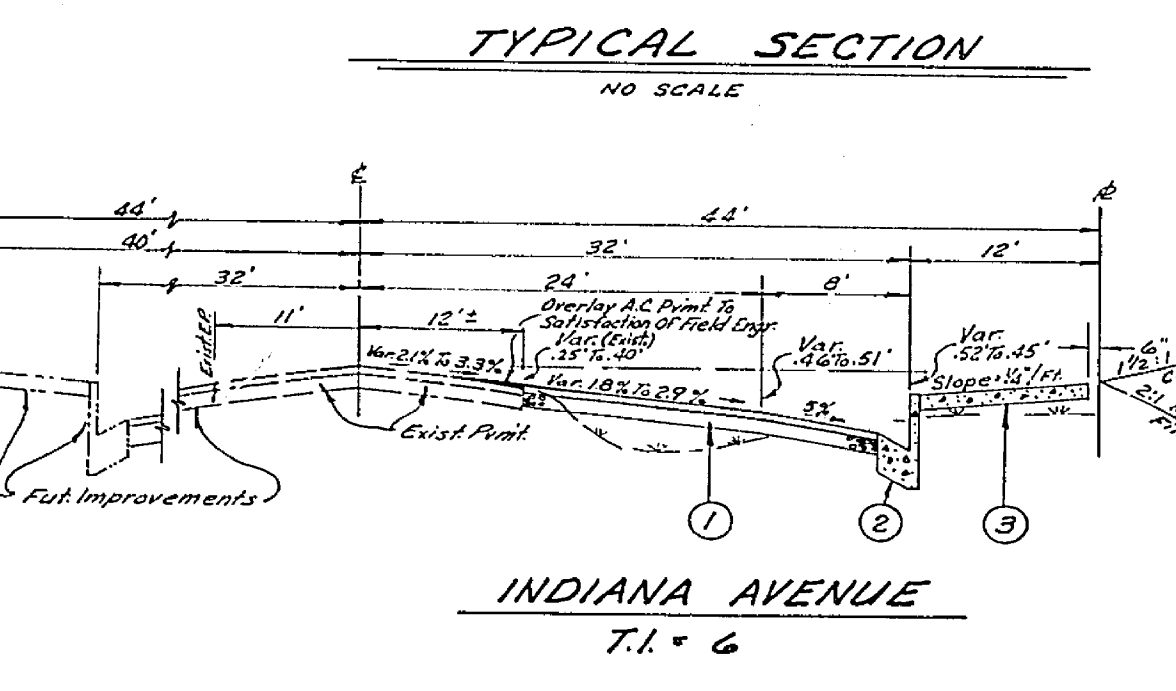


- ### STREET LIGHT LEGEND & NOTES
- ⊗ Indicates City of Riverside Marbleite Light Standard No. 430A With 10,000 L, 250W Type III "Line Material" Mercury Vapor Luminaire, Cat. No. LM43A2 Or Approved Equal.
 - ⊕ Indicates City of Riverside Marbleite Light Standard No. 6010 With Modifications As Noted & 25,000 L, 400W Type III "Line Material" Mercury Vapor Luminaire, Cat. No. LM53A2 Or Approved Equal.
 - Indicates No. 3 1/2 Pullbox "Brooks Products Inc." Or Approved Equal.
 - Indicates No. 5 Pullbox "Brooks Products Inc." Or Approved Equal.
 - Indicates 1" Rigid Galv. Steel Conduit, Except As Noted.
 - Indicates Feed Point.
1. All Street Light Standards And Pullboxes To Be Located In The Field.
 2. All Street Light Standards Shall Be Checked For Clearance Of Driveways And Placed 1' From End Of Curb Returns.
 3. City of Riverside Draw. No. L1-1300B For Light Standard Details And Draw. No. L1-13003 For Pullbox Details.
 4. All Cable To Be AWG No. 8 Copper.
 5. This Is A 2 Wire 240 Volt Multiple System.
 6. All Construction To Comply With City of Riverside Street Light Specifications.
 7. Inspections To Be Called For As Outlined In Specifications.
 8. Feed Point(s) To Be Confirmed At Time Of Construction.
 9. \$75⁰⁰ Connection Fee To Be Paid Date Paid.
 10. \$11⁰⁰ Inspection Fee To Be Paid Date Paid.
 11. The City of Riverside Traffic Engineering Division Will Pay 10% Toward The Cost Of This Project To The Developer Upon Completion Of The Work And Receipt Of A Statement From The Developer.



- ### GENERAL NOTES
1. It Shall Be The Responsibility Of The Contractor To Clear The Right-Of-Way In Accordance With The Provisions Of Law As It Applies Each Utility Including Irrigation Lines And Appurtenances And At No Cost To The City.
 2. Construction Shall Be In Accordance With The City of Riverside, Department of Public Works, Specifications No. 441 And Standard Drawings.
 3. Prime Coat, Seal Coat And Paint Binder Are Required.
 4. Grading Will Require A Permit Under Ordinance 3093 For A Cut Or Fill Exceeding 100 Cubic Yards, Or A Fill Over One Foot In Depth.
 5. Trim Edge Of Existing Pavement Where New Paving Joins Existing Pavement To A Clean, Straight Line. Construct Match-Up Paving As Shown And Overlay Paving As Directed In The Field To Produce A Smooth Crown Section.
 6. For Relocation Of Any City Domestic Or Irrigation Water Facility Or Electric Power Utility Facility To Be Done By City Forces. Electric Water Commercial Engineer At (714) 787-7441. Schedule About 8 Weeks To Process A Work Order, Before Relocation Work Begins.
 7. The Finished Sub-Grade Shall Have A Composition Of Not Less Than 90% For A Depth Of 0.5 Foot As Determined By Test Method No. "Calif. 216" Immediately Prior To Placement Of The Cover.
 8. Contact Park & Recreation Dept. At (714) 787-7301 And Public Utilities Engineering At (714) 787-7421, 24 Hr. Prior To Sidewalk Construction For Tree Well And Street Light Requirements.
 9. The Amount Of Asphalt Overlay On Existing Pavement Has Been Estimated By The Engineer To Be Approx. 10,000 Tons.

- ### CONSTRUCTION NOTES
1. Const 2 1/2" A.C. Over 4" C.I. 2 A.B. (A.B. Per State Specs.)
 2. Const 6" Curb & Gutter Per Std. No. 200.
 3. Const 4" R.C.C. Sidewalk Per Std. No. 350.
 4. Const 6" R.C.C. Driveways Per Std. No. 302. (A=25', B=39')
 5. Const 6" R.C.C. Driveways Per Std. No. 302. (A=22', B=36')
 6. Relocate 18" to 24" Dia. Palm Trees To New 6" x 6" Tree Wells. Ball Load Excessive Palms On City Equipment Incl. Debranching Prior To Sawing & Loading.
 7. Remove A.C. Berm.
 8. Remove Conc. Curb & Gutter.
 9. Remove Conc. Slabs.
 10. Remove & Salvage Metal Guard Rail.
 11. Remove Exist 6" R.C.C. W. Lines.
 12. Remove A.C. Paint Inlet Drives.
 13. Remove Culvert.
 14. Relocate Street Signs To Specifications Of Traffic Department.
 15. Remove Wire Fence.
 16. Remove 2" x 2" Steel Cover, 12" Conc. Inlet Pipe & Plug 42" R.C.P.
 17. Const 2" x 4" Redwood Header @ 5'1", 103 L.F.
 18. Install Clearance Markers W21R @ 20' O.C. Per Std. No. 665.
 19. Const 5" A.C. Over Compacted Soil. (See Gen Note 7)
 20. Const 4" R.C.P. Sewer House Connection Incl. Trenching, Backfill, Flooding & Saddle Connection Per Std. No. 362.



HOLM, TAIT & ASSOCIATES 280 NORTH WILSHIRE, ANAHEIM, CALIF. PH: 535-6867		CITY OF RIVERSIDE, CALIFORNIA DEPARTMENT OF PUBLIC WORKS		PROJECT NO. S.S. 308 L5-13152
APPROVED FOR STREET LIGHTS <i>[Signature]</i> 5-3-66 GEN. SUPT. & CH. ENGR. DATE		PREPARED UNDER THE SUPERVISION OF <i>[Signature]</i> 5-3-66 DATE		SHEET 1 OF 1 R-1140
APPROVED BY: <i>[Signature]</i> 5-3-66 OFFICE ENGINEER		APPROVED BY: <i>[Signature]</i> 5-3-66 DIRECTOR OF PUBLIC WORKS		FILE NO.
DESIGNED BY: <i>[Signature]</i> DRAWN BY: <i>[Signature]</i> CHECKED BY: <i>[Signature]</i>		REVISIONS: <i>[Signature]</i> 5-3-66 JOHN R. MOUM, R.C.E. 14705 DATE		CITY OF RIVERSIDE DATUM. Elev = 803.83 F.B. 605, Pg. 20 - X On Fire Hydrant On S.S. Indiana Ave. 570' E/O Meyers.