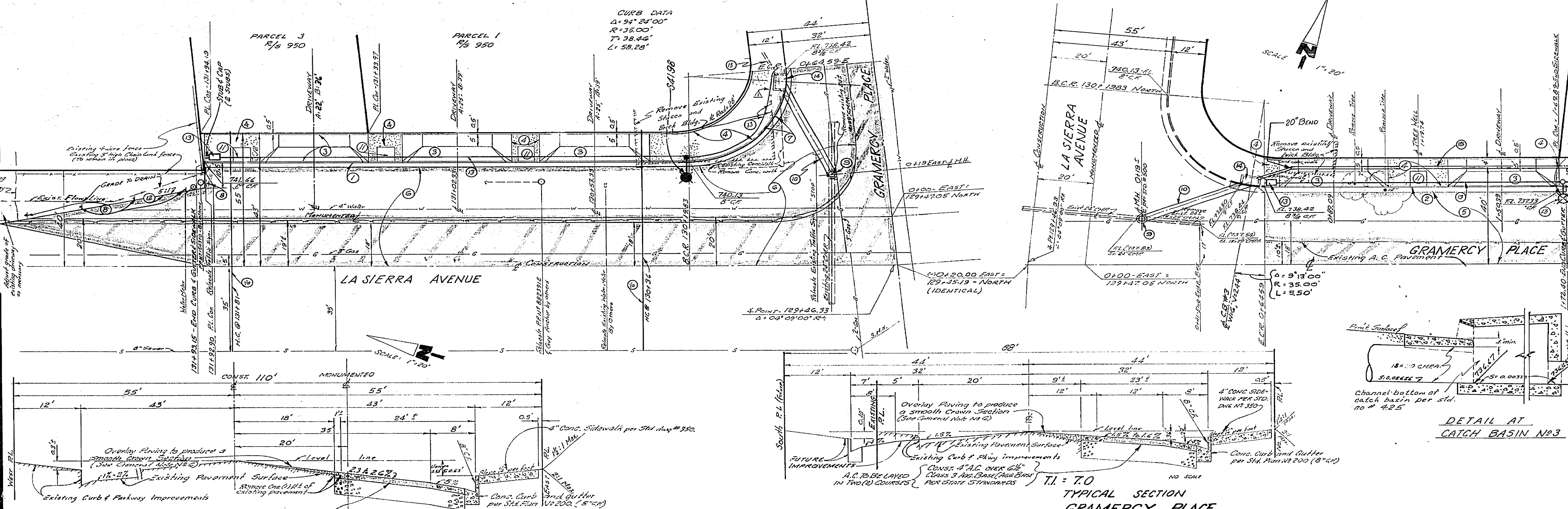


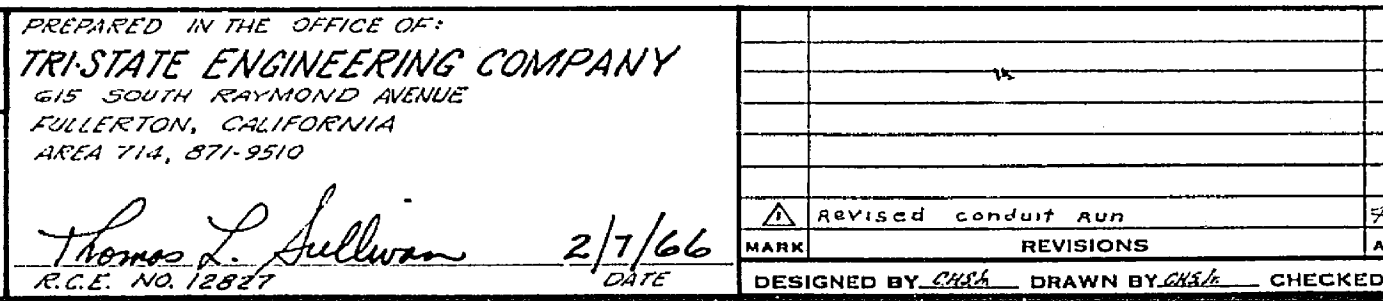
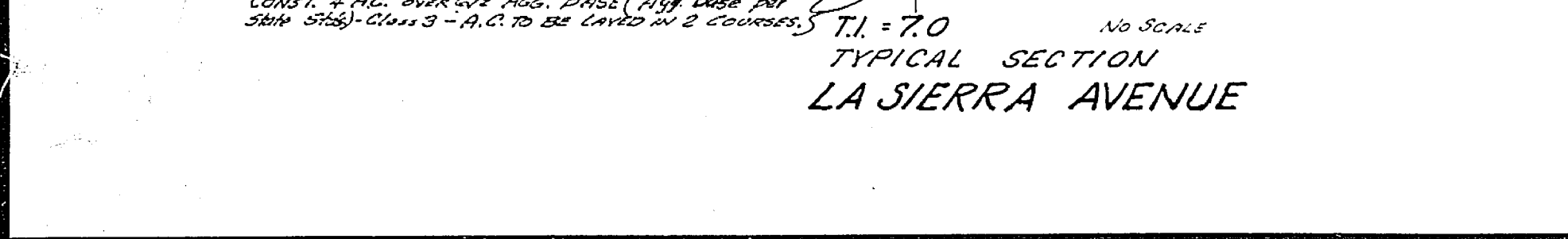
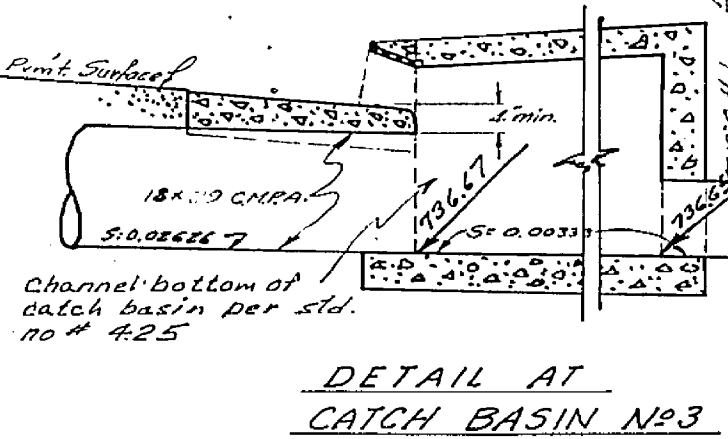
STREET LIGHT LEGEND
Indicates City of Riverside Standard Light Standard, No. 1554 with 10,000L, 250W, type III "A" Material "Inventory" vapor lamp, etc.
Indicates City of Riverside Standard Light Standard, No. 1554 with 10,000L, 100W, type III "A" Material "Inventory" vapor lamp, etc.
Indicates No. 255 "Breaks" Products Inc. or approved equal.
Indicates 1" rigid galvanized steel conduit, except as noted.

STREET LIGHT NOTES
1. All Street Light Standards and pullboxes to be located in the field.
2. All Street Light Standards shall be checked for clearance of driveways and other overhead obstructions from end of curb return.
3. See City of Riverside Div. No. 11-13008 and 11-13011 for light standard details and Div. No. 11-13009 for pullbox details.
4. All curbs to be 8" high and 6" wide.
5. This is a 2 wire 240 volt multiple system.
6. All construction to comply with City of Riverside Street Light Specifications.
7. Inspection to be called for as outlined in the Street Light Specifications.
8. Feed point to be confirmed at time of construction.
9. Feed point to be determined.
10. The City of Riverside Traffic Engineering Division will pay \$5.00 toward the cost of this project to the developer upon completion of the work.
11. All street lighting to be statement from the developer.
12. \$5.00 inspection fee to be paid by the developer.

GENERAL NOTES
1. It shall be the responsibility of the contractor to clear the site of all obstructions in accordance with the provisions of the plan and specifications and of all existing utility lines and appurtenances and of all easements and of all other utility lines.
2. Construction shall be in accordance with the City of Riverside Department of Public Works specifications, Methods and Standards Drawings.
3. Plans Cost Seal and Print Binder are required.
4. Grading will require a permit under Title 17 of the California Administrative Code and shall comply with all applicable requirements.
5. Contact Park and Recreation Department at 787-7301 and Public Utilities Engineering at 787-7302 for a permit to construct street lighting.
6. This edge of curbing pavement will be removed and replaced with a clean straight line concrete curb and gutter with a smooth finished surface.
7. The finished subgrade shall have a minimum of 4% slope to the gutter and a minimum of 1% slope to the street.
8. The finished subgrade shall have a minimum of 1% slope to the gutter and a minimum of 1% slope to the street.
9. The finished subgrade shall have a minimum of 1% slope to the gutter and a minimum of 1% slope to the street.



CONSTRUCTION NOTES
① Const. Curbs & Gutter per Std. Dwg. No. 200-B-C-F
② Const. "B" Curb
③ Const. Conc. D.W. per Std. Dwg. No. 305-A-1-25, 25'-30"
④ Const. Conc. Sidewalk per Std. Dwg. No. 350
⑤ Const. Conc. Sidewalk 18" wide per Std. Dwg. No. 350
⑥ Const. Conc. Sidewalk 12" wide per Std. Dwg. No. 350
⑦ Const. Conc. Curbs & Gutter per Std. Dwg. No. 200-Vary of Item 1 to 6.
⑧ Const. Five (5) WPIR
⑨ Const. Std. Manhole per Ch. Std. Dwg. No. 500
⑩ Const. 41.0 in. Fl. 2018 CMRA-14.0 in.
⑪ Const. 6" Pipe
⑫ Const. 6" Riser
⑬ Const. Street Lighting per plan and notes herein.
⑭ Const. Catch Basin No. 3 per Std. Dwg. No. 305, 14'-6" x 14'-6"
⑮ Const. 18" Curb 18" high
⑯ Const. 18" Curb 18" high
⑰ Const. 18" Curb 18" high



APPROVED FOR STREET LIGHTING

PREPARED IN THE OFFICE OF:	TRISTATE ENGINEERING COMPANY 1515 SOUTH BURNHAM AVENUE FULLERTON, CALIFORNIA AREA 714, 871-9510		
DESIGNED BY:	THOMAS L. SULLIVAN	DATE:	2/1/66
CHECKED BY:	R.G.E. NO. 12847	DATE:	

CITY OF RIVERSIDE

APPROVED BY:	DATE:	APPROVED BY:	DATE:
OFFICE ENGINEER	2/2/66	DIRECTOR OF PUBLIC WORKS	2/2/66
TOWN ENGINEER	2/2/66		
TRAFFIC ENGINEER	2/2/66		
ASSISTANT CITY ENGR.	2/2/66		

CITY OF RIVERSIDE, CALIFORNIA
DEPARTMENT OF PUBLIC WORKS

PLAN AND PROFILE OF
R-53-656 & 1/2 950
NORTHEAST CORNER OF
LA SIERRA AVENUE
AND
GRAMERCY PLACE

M.B.D. 6-17
PROJECT NO. 53-910
15-13164
R-1145
SHEET 1 OF 1
FILE NO.

HORIZ. SCALE: 1" = 20'
VERT. SCALE: 1" = 2'