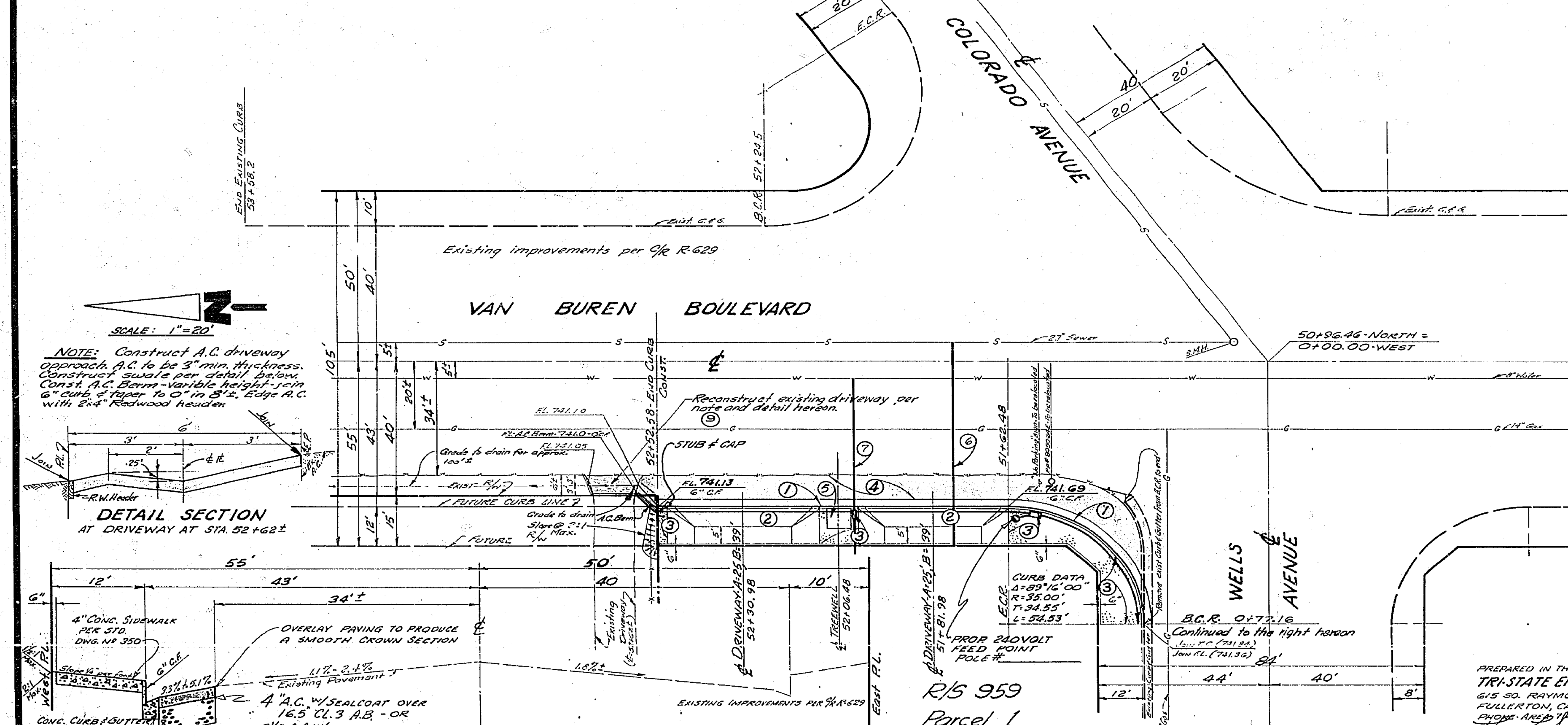


PROFILE SCALES  
 Horiz: 1" = 20'  
 Vert: 1" = 2'

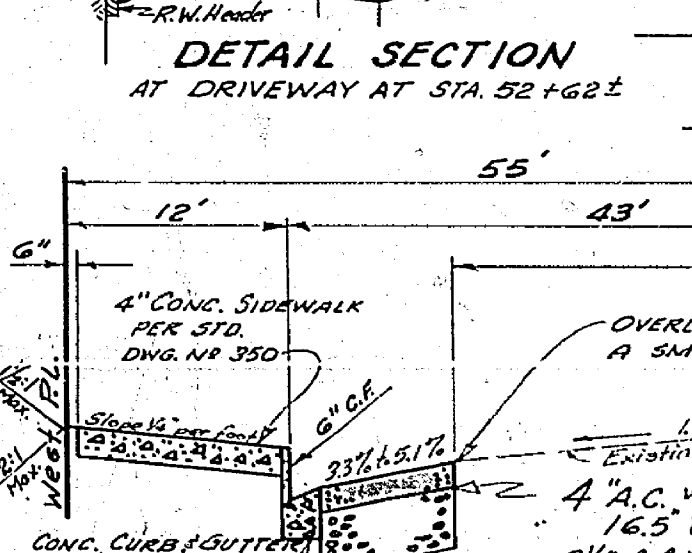
- GENERAL NOTES**
- It shall be the responsibility of the Contractor to clear the Right-of-Way in accordance with the provisions of law as it affects such utility including irrigation and appurtenances and at no cost to the City.
  - Construction shall be in accordance with the City of Riverside Department of Public Works Specifications No. 401 and Standard Drawings.
  - Prime Coat, Seal Coat and paint Binder are required.
  - Grading will require a permit under ord. NS 3093 for a cut or fill exceeding 100 cubic yards or a cut or fill over one(1) foot in depth.
  - Contact Parks and Recreation Department at 787-7301 and Public Utilities Engineering at 787-5424, 24 hrs. prior to sidewalk construction for Tree Well and Street Light requirements.
  - Trim edge of existing pavement, where new pavement joins existing pavement to be a clean straight line. Construction Match-up paving as shown and overlay paving as directed in the field to produce a smooth crown section.
  - The amount of asphalt overlay on existing pavement has been estimated by the Engineer to be 0.0 tons.
  - The finished subgrade shall have relative compaction of not less than 90% for a depth of 2.5 feet as determined by test method M 293 of the State Division of Highways Materials Manual-Vol. I) immediately prior to placement of cover.
  - For relocation of any City domestic or irrigation water facility or electric power utility facility to be done by City forces, Contact C. Hage, Water Department Engineer at 787-7421, Schedule about two(2) weeks to process a work order before relocation work begins.

- CONSTRUCTION NOTES**
- CONST. CURB & GUTTER PER STA. DWG. # 200-6-C.F.
  - CONST. CONC. DRIVEWAY PER STA. DWG. # 302-A-25, B-39.
  - CONST. CONC. SIDEWALK PER STA. DWG. # 380.
  - CONST. 4" OVER 1.5" AGG. BASE PER SECTION HEREON, & AGG. BASE PER STATE STA. DWG. # 6-6. FINE AGG.
  - CONST. 4" K.C.P. SEWER LATERAL.
  - CONST. 1" FULL FLOW WATER SERVICE BY PUBLIC UTILITIES
  - CONST. STEEL GAS SERVICE BY So. Calif. Gas. Co.
  - RECONSTRUCT EXISTING DRIVEWAY APPROACH PER DETAIL HEREON.

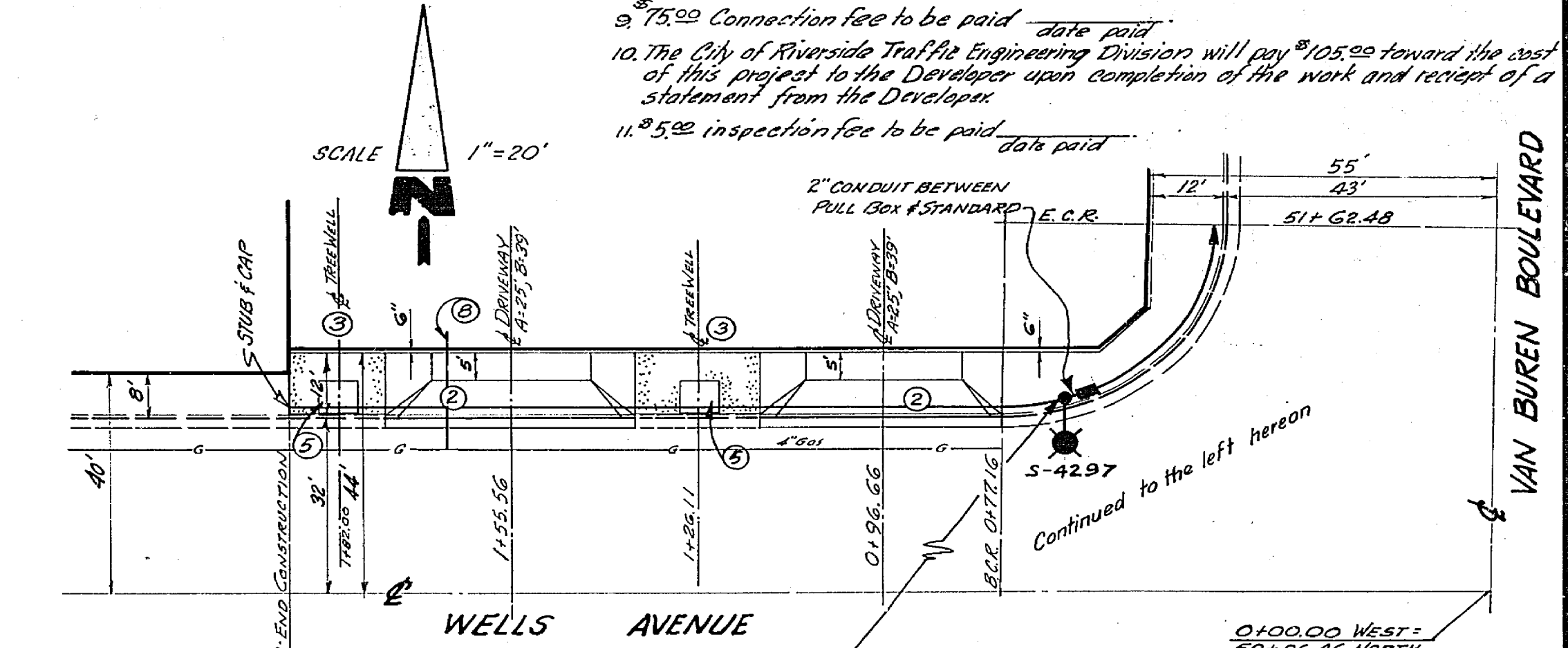
- STREET LIGHT NOTES**
- All street light standards and pullboxes to be located in the field.
  - All street light standards shall be checked for clearance of driveways.
  - See City of Riverside Drawing No. L1-13011 for light standard details and Drawing No. L1-13003 for pullbox details.
  - All cable to be AWG No. 8 copper.
  - This is a 2 wire 240 volt multiple system.
  - All construction to comply with City of Riverside Street Light Specifications.
  - Inspections to be called for as outlined in specifications.
  - Feed point to be confirmed at time of construction.
  - \$75.00 Connection fee to be paid date paid.
  - The City of Riverside Traffic Engineering Division will pay \$105.00 toward the cost of this project to the Developer upon completion of the work and receipt of a statement from the Developer.
  - \$5.00 inspection fee to be paid date paid.



NOTE: Construct A.C. driveway approach A.C. to be 3" min. thickness. Construct swale per detail below. Construct A.C. boxes variable height using 6" curb of paper to 0" in 3". Edge A.C. with 2x4 Redwood header.



TYPICAL SECTION  
 VAN BUREN BOULEVARD  
 T.I. 70



- STREET LIGHT LEGEND**
- Indicates City of Riverside marblemount light standard No. 68110 with modifications as noted and 24000L 400W, type III 2 line Material mercury vapor luminaire Cat. No. LM53A2 or approved equal.
  - Indicates No. 3 1/2 Pullbox "Brooks Products Inc." or approved equal.
  - Indicates No. 5 Pullbox "Brooks Products Inc." or approved equal.
  - Indicates 1" rigid galv. steel conduit, except as noted.
  - Indicates lead point.

**BENCH MARK:**  
 CITY OF RIVERSIDE DATUM, I.M. #600  
 SPK IN R.P. # 588714, 889 F.E. 2' N  
 VAN BUREN BLVD. ON N.E. SIDE OF  
 COLORADO AVENUE. R/S 646/77

ELEVATION 749.39

APPROVED FOR STREET LIGHTING  
*F.H. Dwyer* 11-11-66  
 GENERAL SUPERINTENDENT, CITY ENGINEER

DESIGNED BY *CHS*, DRAWN BY *CHS*, CHECKED BY *CHS*

APPROVED BY	DATE	APPROVED BY	DATE
OFFICE ENGINEER	11-17-66	DIRECTOR OF PUBLIC WORKS	11-17-66
TRAFFIC DIVISION	11-17-66	ASSISTANT CITY ENGINEER	11-17-66

CITY OF RIVERSIDE, CALIFORNIA  
 DEPARTMENT OF PUBLIC WORKS

S.R. 371 R-10  
 PLAN AND PROFILE OF  
 VAN BUREN BOULEVARD (W/S)  
 FROM  
 WELLS AVENUE TO 157 FEET NORTH  
 OF WELLS AVENUE  
 R/S 959

PROJECT NO. 15-13187  
 SHEET 1 OF 1  
 FILE NO.