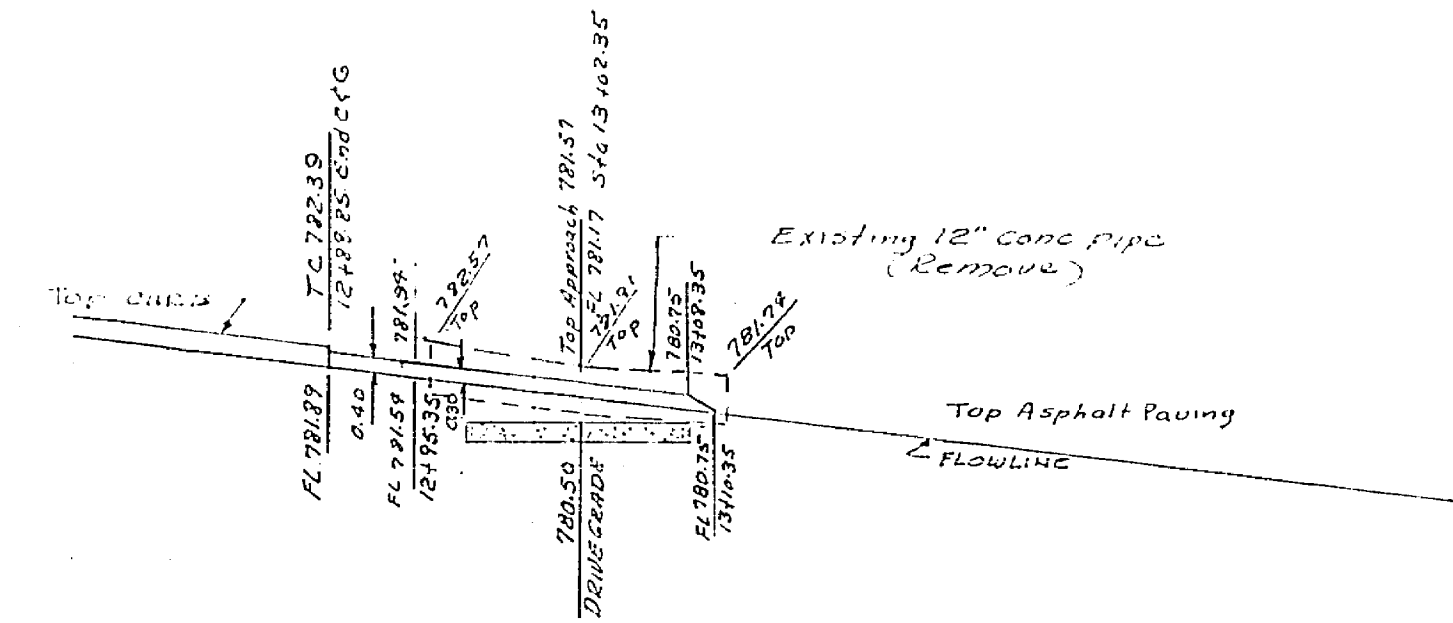


790

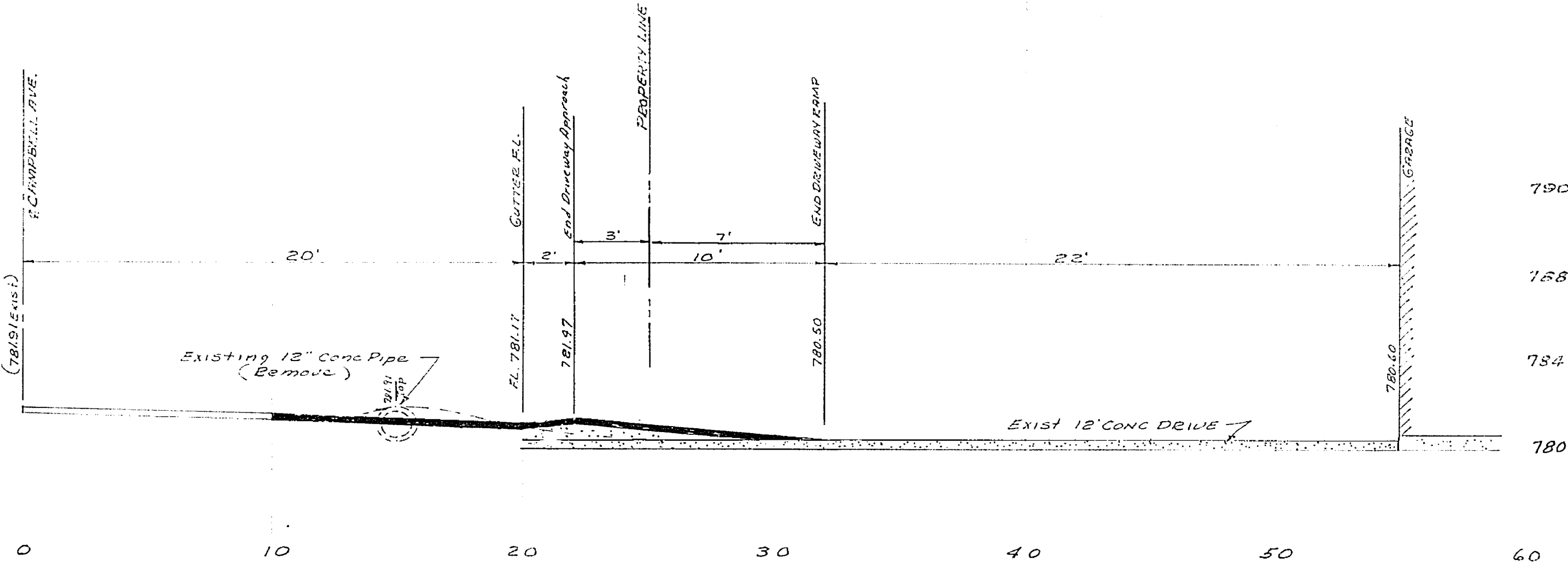
780



SCALE
HORIZ. 1"=10'
VERT. 1"=4'

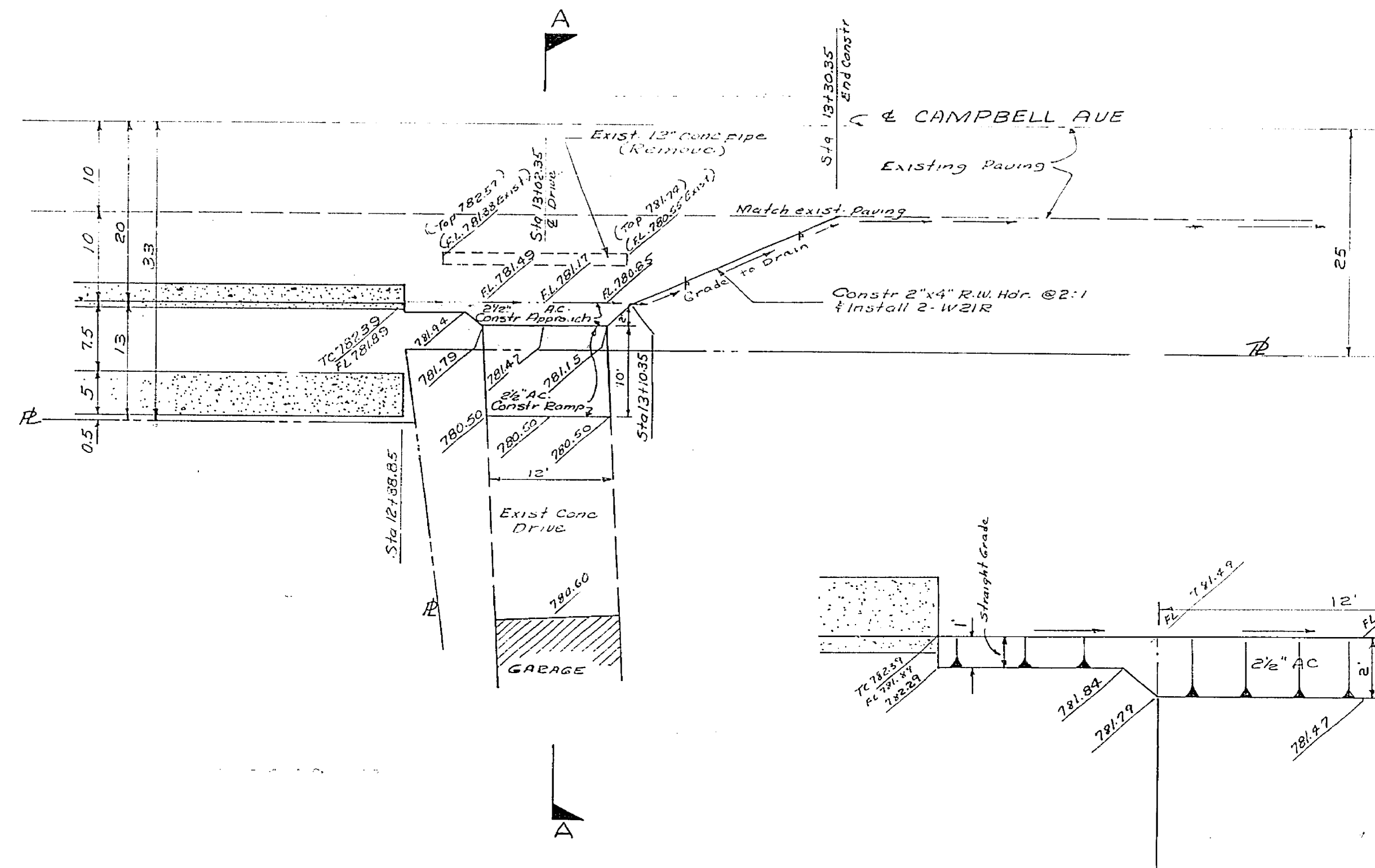
790

780

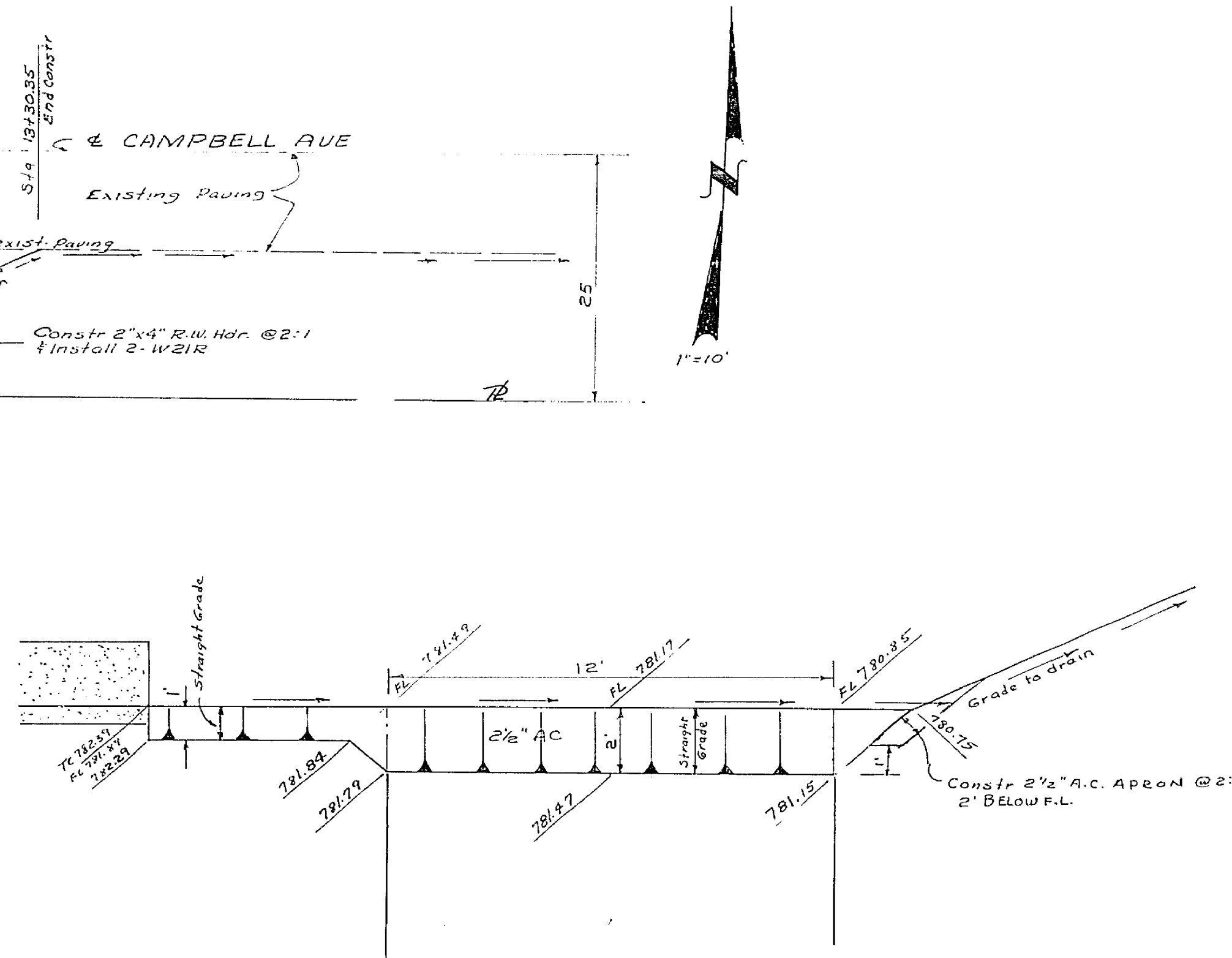


SCALE
HORIZ. 1"=4'
VERT. 1"=4'

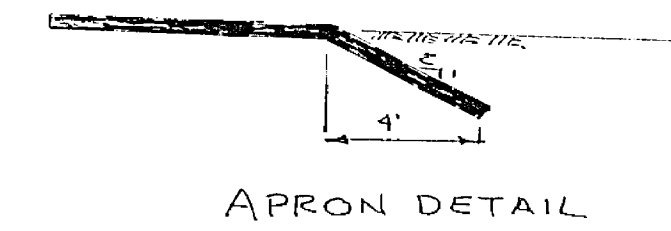
SECTION A-A



DETAIL "A"
DRIVEWAY AT END OF CURB
SCALE 1"=10'



DETAIL
ASPHALT DRIVEWAY APPROACH
SCALE 1"=3'



APRON DETAIL

STONE ENGINEERING
Suite 532 4073 Main St.
Riverside, California
Ph 682-0390
MAY 1966
Ralph Stone
Ralph Stone RCE 12620

MARK	REVISIONS	APPR.	DATE

CITY OF RIVERSIDE, CALIFORNIA
DEPARTMENT OF PUBLIC WORKS
APPROVED BY: *CEL PDS* BY DATE: 8/16/66
OFFICE ENGINEER
PARK DEPARTMENT
TRAFFIC DIVISION
ASSISTANT CITY ENGINEER
APPROVED BY: *William D. Hartman* BY DATE: 8/30/66
DIRECTOR OF PUBLIC WORKS

STREET IMPROVEMENTS
CAMPBELL AVE. SOUTH SIDE
250' WEST OF JONES AVE
BUILDING PERMIT
ELBERT L. MYRICK JR.
10440 CAMPBELL AVE.
HORIZ. SCALE: 1" = SHOWN VERT. SCALE: 1"

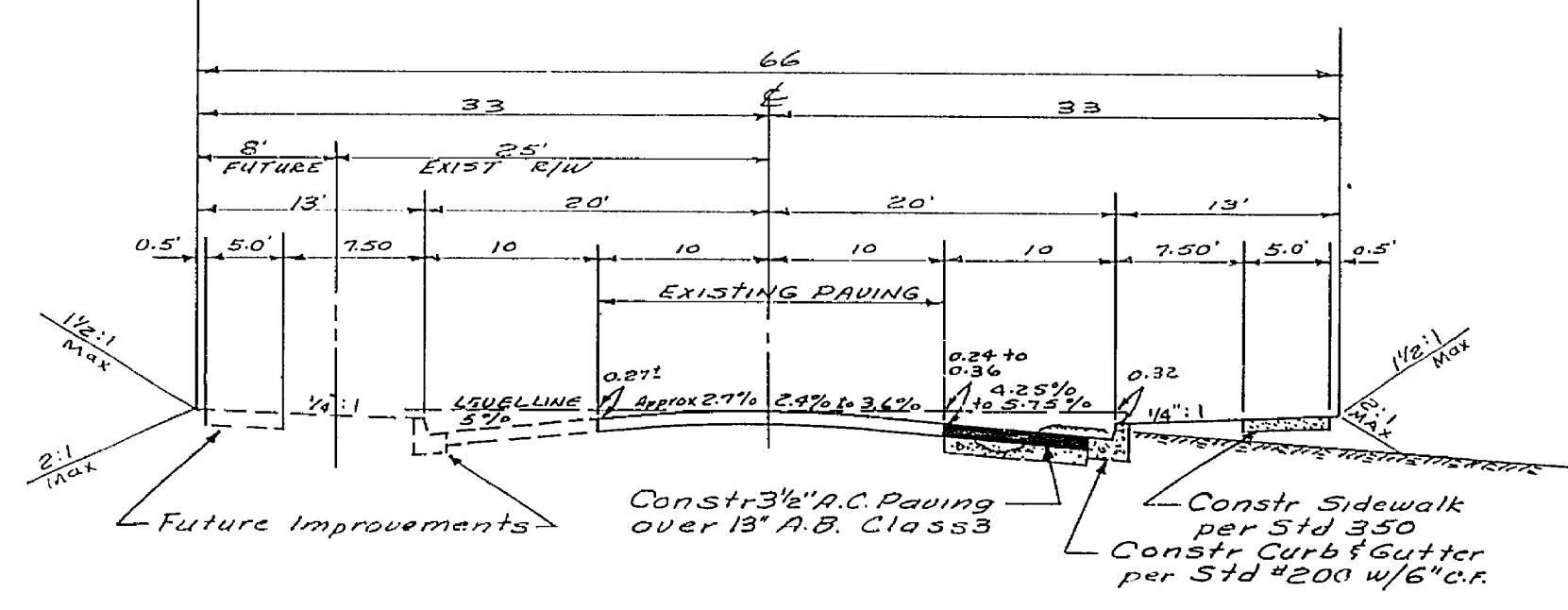
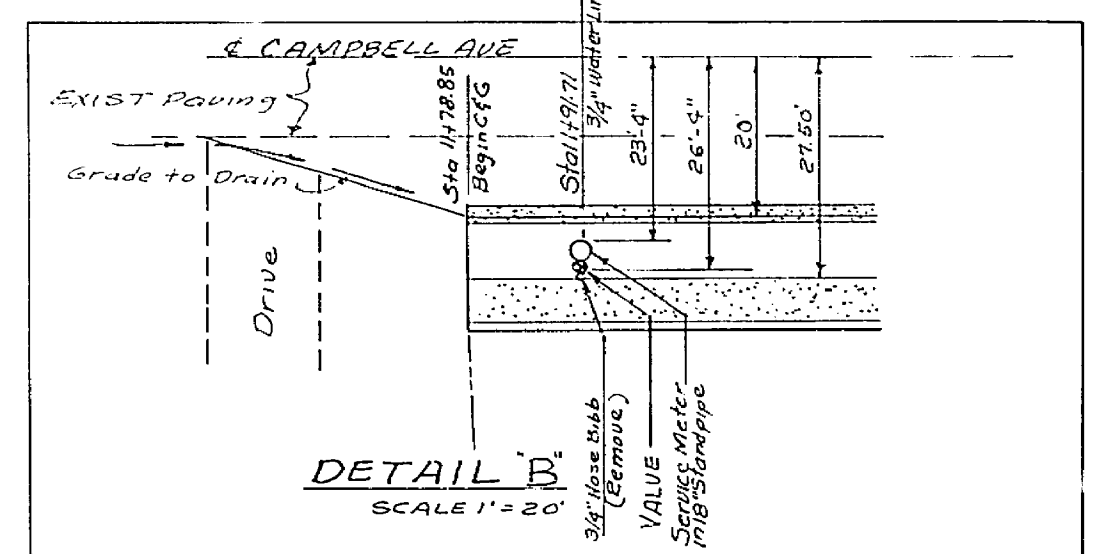
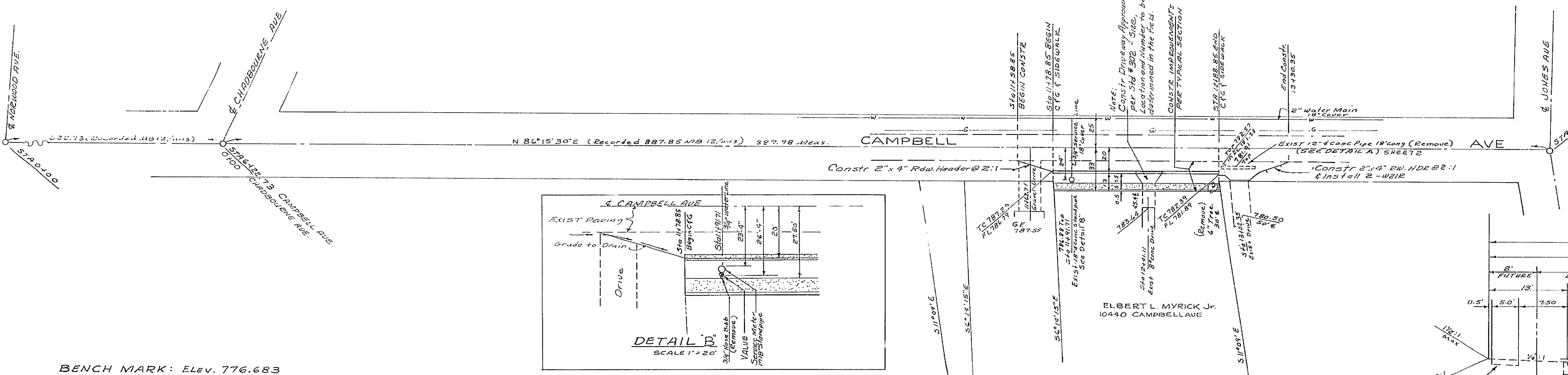
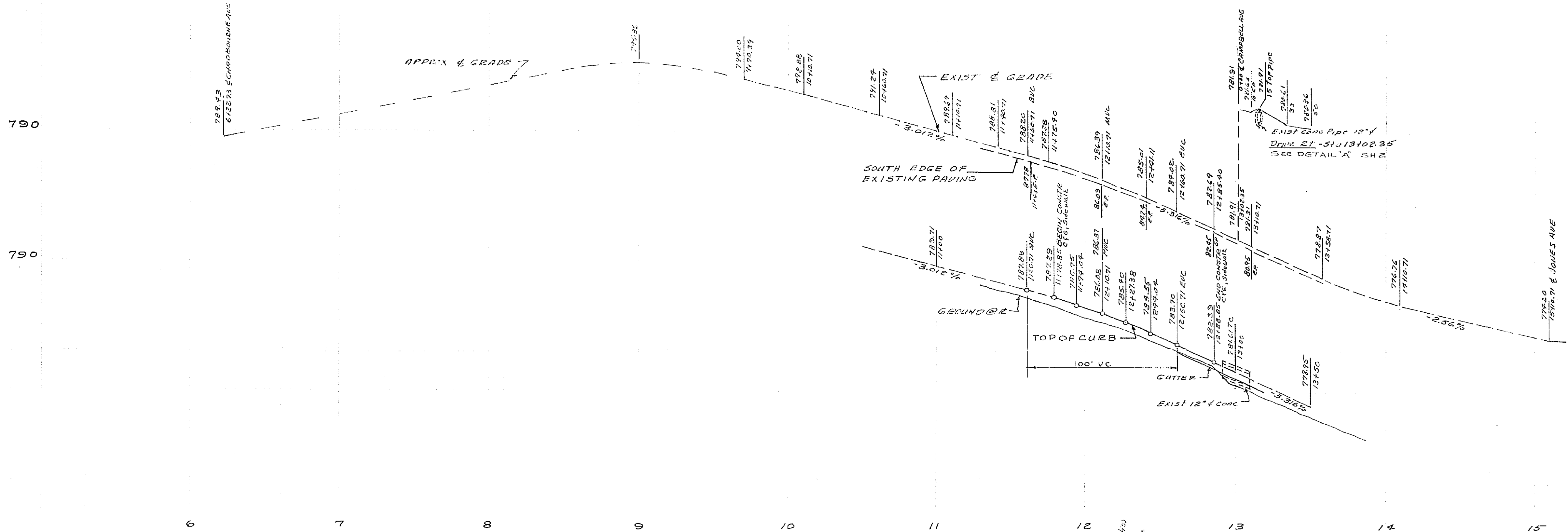
PROJECT NO.
R-1156
SHEET 2 OF 2
FILE NO.

790

790

780

780



BENCH MARK: ELEV. 776.683
 RR Spike in Power Pole 262748E on NE Corner of Jones Ave & Campbell Ave FB. 709/60

- GENERAL NOTES:**
1. It shall be the responsibility of the contractor to clear the right of way in accordance with the provisions of law as it affects each utility including irrigation lines and appurtenances and at no cost to the City.
 2. Construction shall be in accordance with the City of Riverside Department of Public Works, Specifications No. 401, and Standard Drawings.
 3. Prime coat, seal coat and paint binder are required.
 4. Grading will require a permit under Ordinance 3093 for a cut or fill exceeding 100 cubic yards, or a fill of one foot in depth.
 5. Trim edge of existing pavement where new paving joins existing pavement to a clean, straight line. Construct match-up paving as shown and overlay paving as directed in the field to produce a smooth crown section. Engineer estimates overlay to be 0.5 tons.
 6. The finished subgrade shall have a compaction of not less than 90% for a depth of 0.5' as determined by test method No "Calf 216F" immediately prior to placement of cover.

Submitted By:
STONE ENGINEERING
 Suite 532 4075 Main St.
 Riverside, California
 Ph. 682-0390

Ralph Stone
 RALPH STONE CGE 13620

MAY, 1966

MARK	REVISIONS	APPR.	DATE

DESIGNED BY: _____ DRAWN BY: _____ CHECKED BY: _____

CITY OF RIVERSIDE, CALIFORNIA
 DEPARTMENT OF PUBLIC WORKS

APPROVED BY: _____
 OFFICE ENGINEER
 TRAFFIC DIVISION

APPROVED BY: _____
 DIRECTOR OF PUBLIC WORKS

DATE: 8/24/66

R=14 S.R. No 581

STREET IMPROVEMENTS
 CAMPBELL AVE. SOUTH SIDE
 250' WEST OF JONES AVE
 BUILDING PERMIT
 ELBERT L. MYRICK JR.
 10440 CAMPBELL AVE.

PROJECT NO.
 R-1156

SHEET 1 OF 2

FILE NO.

HORIZ. SCALE: 1" = 40' VERT. SCALE: 1" = 4'