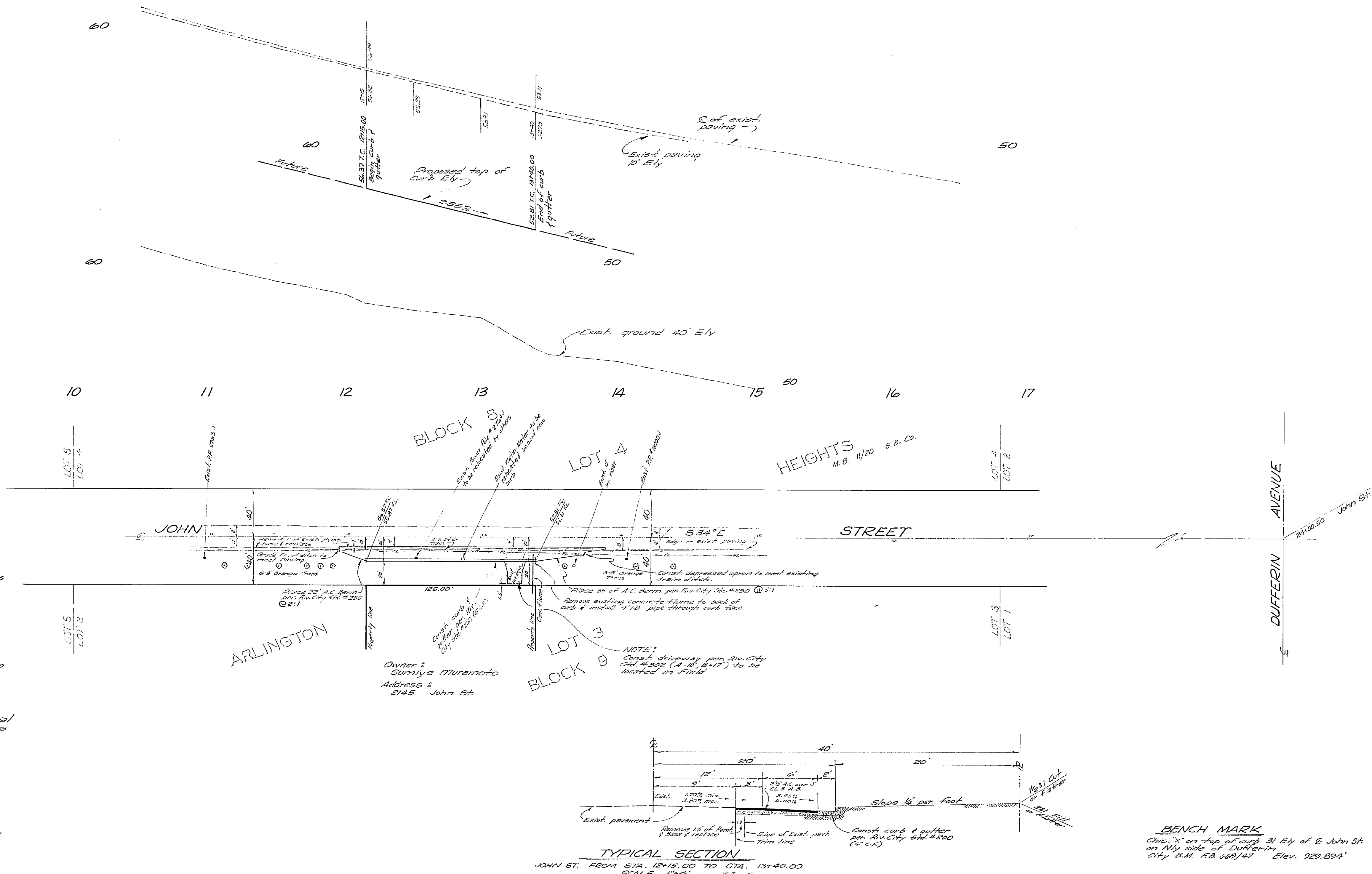


GENERAL NOTES

1. It shall be the responsibility of the contractor to clear the SW in accordance with the provisions of law as it affects each utility including irrigation lines and appurtenances and at no cost to the City.
2. Construction shall be in accordance with the City of Riverside Dept of Public Works, specification No. 461 and Standard Drawings.
3. Prime coat, seal coat, and paint binder are required.
4. Trim edge of existing pavement where new paving joins existing pavement to a clean straight line. Construct make-up paving as shown and overlay paving as directed in the field to produce a smooth crown section.
5. For relocation of any City domestic or irrigation water facility or electric power utility facility to be done by the City, refer, Contract L.R. Eastman, Water Commercial Engineer at 787-2441. Schedule about 2 weeks to process a work order, before relocation work begins.
6. Grading will require a permit under Ordinance 3093 for a cut or fill exceeding 100 cu. Yds., or a fill over one foot in depth.
7. The finished sub-grade shall have a compaction of max. 95% for a depth of 0.5 ft., as determined by test method No. Calt. 216 K immediately prior to placement of the cover.
8. The amount of Asphalt overlay on existing pavement has been estimated by the engineer to be approximately 0.25 tons.



J. F. DAVIDSON ASSOCIATES CIVIL ENGINEERS - SURVEYORS - PLANNERS RIVERSIDE, CALIFORNIA		CITY OF RIVERSIDE, CALIFORNIA DEPARTMENT OF PUBLIC WORKS		PROJECT NO. R-1165
Approved by: <u>George E. McCarty</u> Date: <u>4-18-66</u> R. E. No. <u>10688</u>		APPROVED BY: <u>[Signature]</u> DATE: <u>6-1-66</u> OFFICE ENGINEER: <u>CEB</u> 5/23 PARK DEPARTMENT: <u>9X8</u> 5/20 TRAFFIC DIVISION: <u>WHE</u> 5/21 ASSISTANT CITY ENG.: <u>[Signature]</u> 5/23		SHEET 1 OF 1 FILE NO. 3330
MO. 1009 FOR SUMIYE MURAMOTO RB. 10/4-66		DESIGNED BY: <u>[Signature]</u> DRAWN BY: <u>[Signature]</u> CHECKED BY: <u>[Signature]</u>		STREET PLAN & PROFILE 2145 JOHN ST. JOHN STREET NE 1/4 SIDE FROM 1860'S TO 1861'S S.W. OF THE INTERSECTION OF JOHN ST. & DUFFERIN AVE. CITY B.M. RB. 102/42 Elev. 929.894'
HORIZ. SCALE: 1" = 40'		VERT. SCALE: 1" = 4'		REVISIONS: _____ APPL. DATE: _____