

Surveyor's Notes:
 o Denotes 1/2" I.P. tagged City Engineer to be set within 3 months after street construction.
 • Denotes monuments found as noted. Those disturbed by construction will be replaced with railroad spikes.

APPROVED BY	DATE
DIRECTOR OF PUBLIC UTILITIES	
DATE	

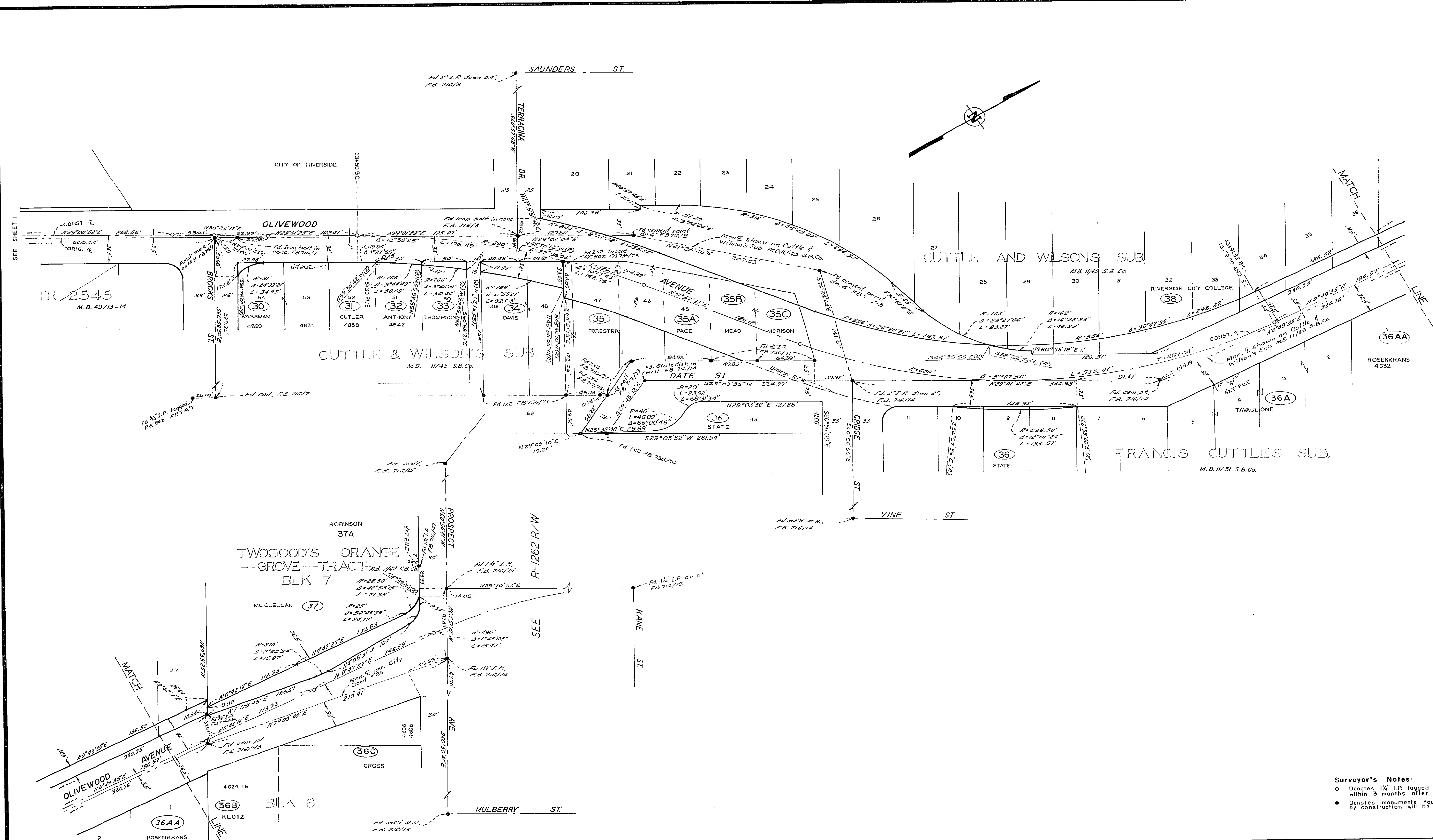
CITY OF RIVERSIDE, CALIFORNIA PUBLIC WORKS DEPARTMENT	
APPROVED BY	DATE
PRINCIPAL ENGINEER	6/2
PARK DEPARTMENT	
TRAFFIC DIVISION	
CHIEF PUB. WORKS ENGR.	6/3
DATE	6-4-69

OLIVEWOOD AVE.
 JURUPA AVE. TO PROSPECT AVE.
 RIGHT OF WAY

ACCOUNT NO	
DRAWING NUMBER	R-1176R/W
SHEET OF	1 OF 1

MARK REVISIONS APPR. DATE
 DESIGNED BY: R.B. DRAWN BY: R/68 CHECKED BY: G.S.

SCALE: 1"=50'



Surveyor's Notes:
 ○ Denotes 1/2" I.P. tagged City Engineer to be set within 3 months after street construction.
 ● Denotes monuments found as noted. Those disturbed by construction will be replaced with retrofired spikes.

APPROVED BY DIRECTOR OF PUBLIC UTILITIES DATE _____		CITY OF RIVERSIDE, CALIFORNIA PUBLIC WORKS DEPARTMENT		OLIVEWOOD AVE. JURUPA AVE. TO PROSPECT AVE. RIGHT OF WAY		ACCOUNT No. R-1176 R/W DRAWING NUMBER SHEET 2 OF 2	
APPROVED BY PRINCIPAL ENGINEER DATE _____		APPROVED BY DIRECTOR OF PUBLIC WORKS DATE 6-4-69		SCALE: 1"=50'		DESIGNED BY: B.B. DRAWN BY: J.Z./S.B. CHECKED BY: S.S.	