

790

790

780

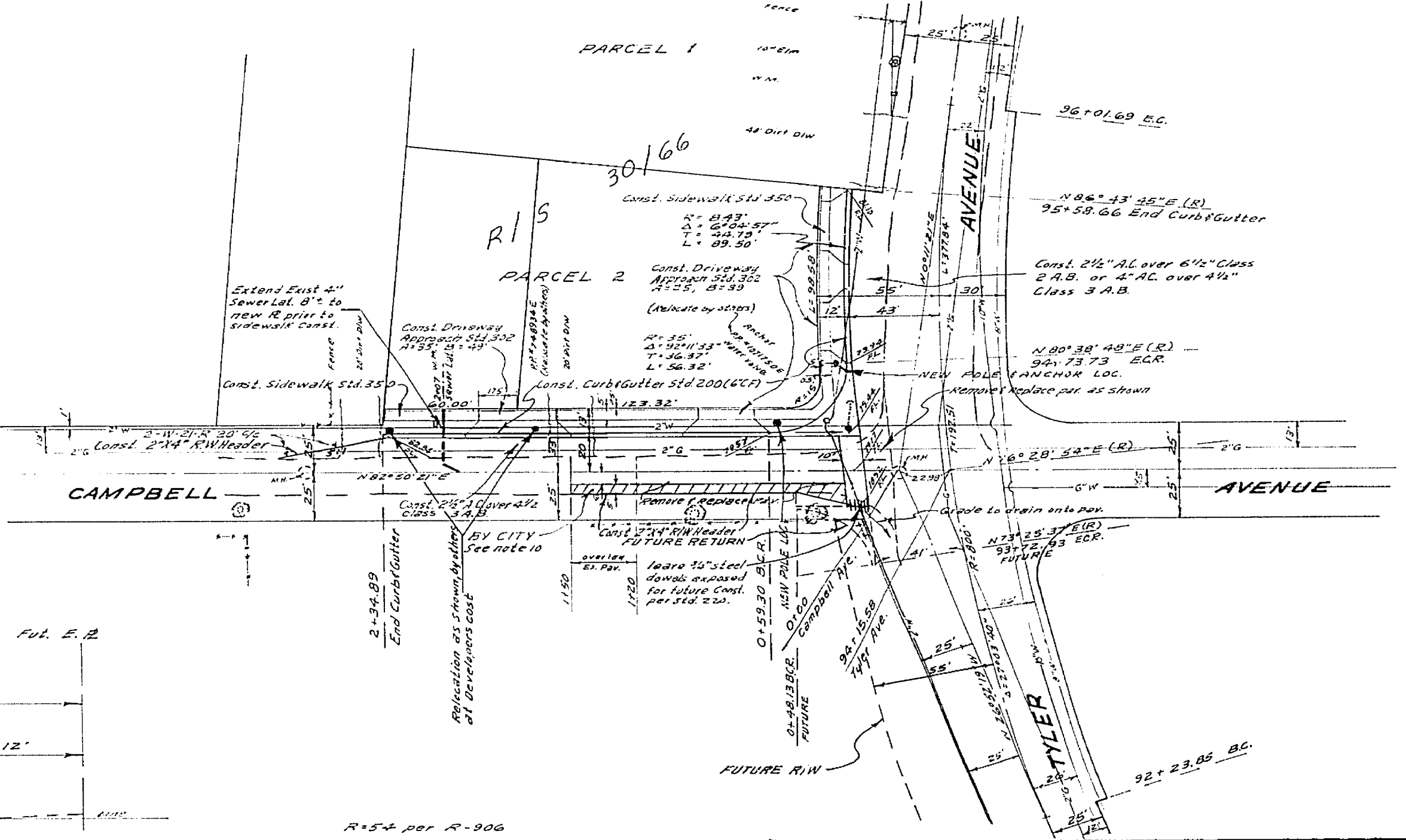
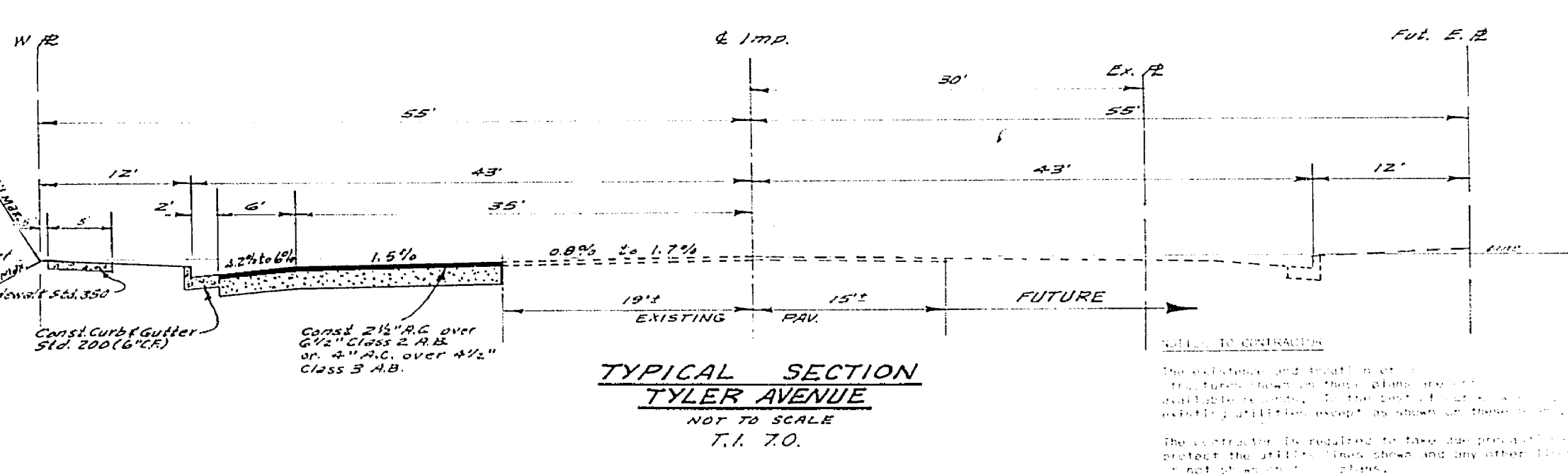
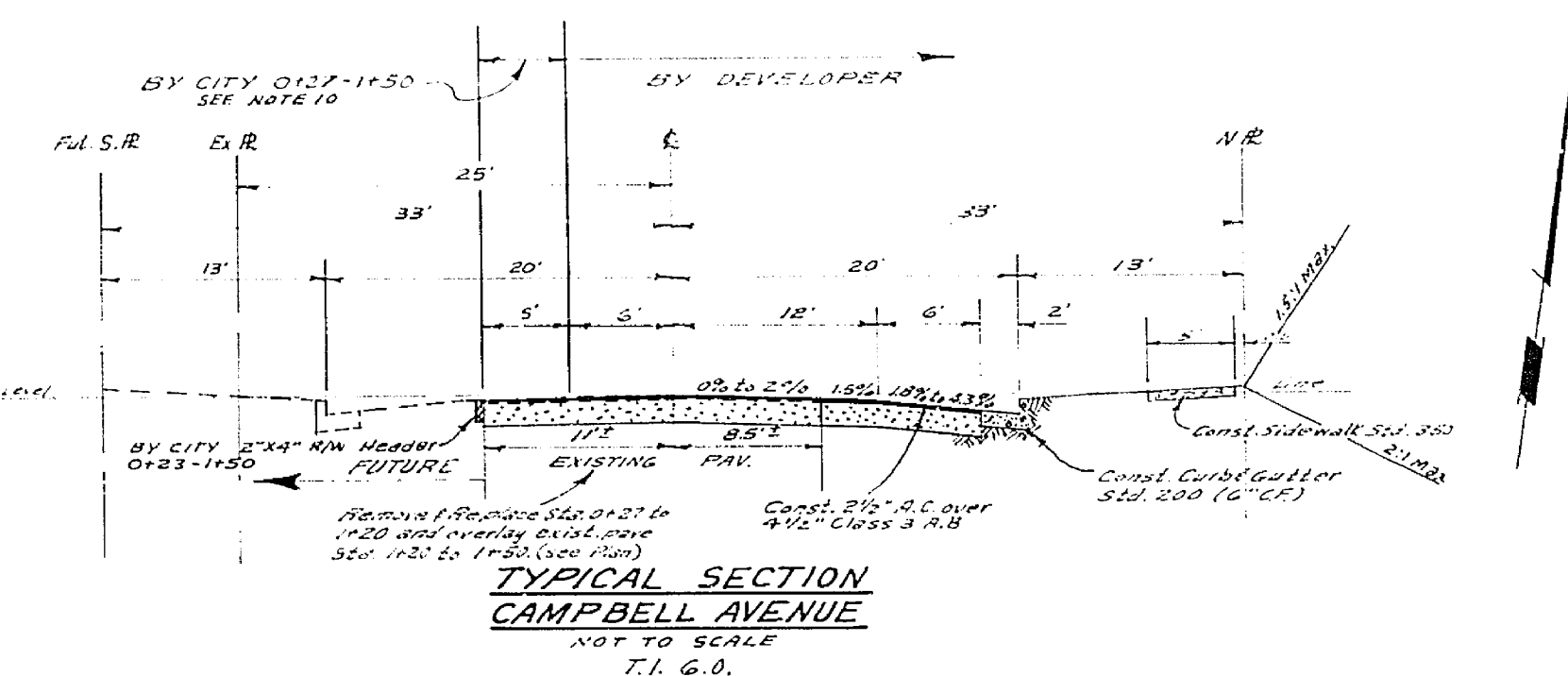
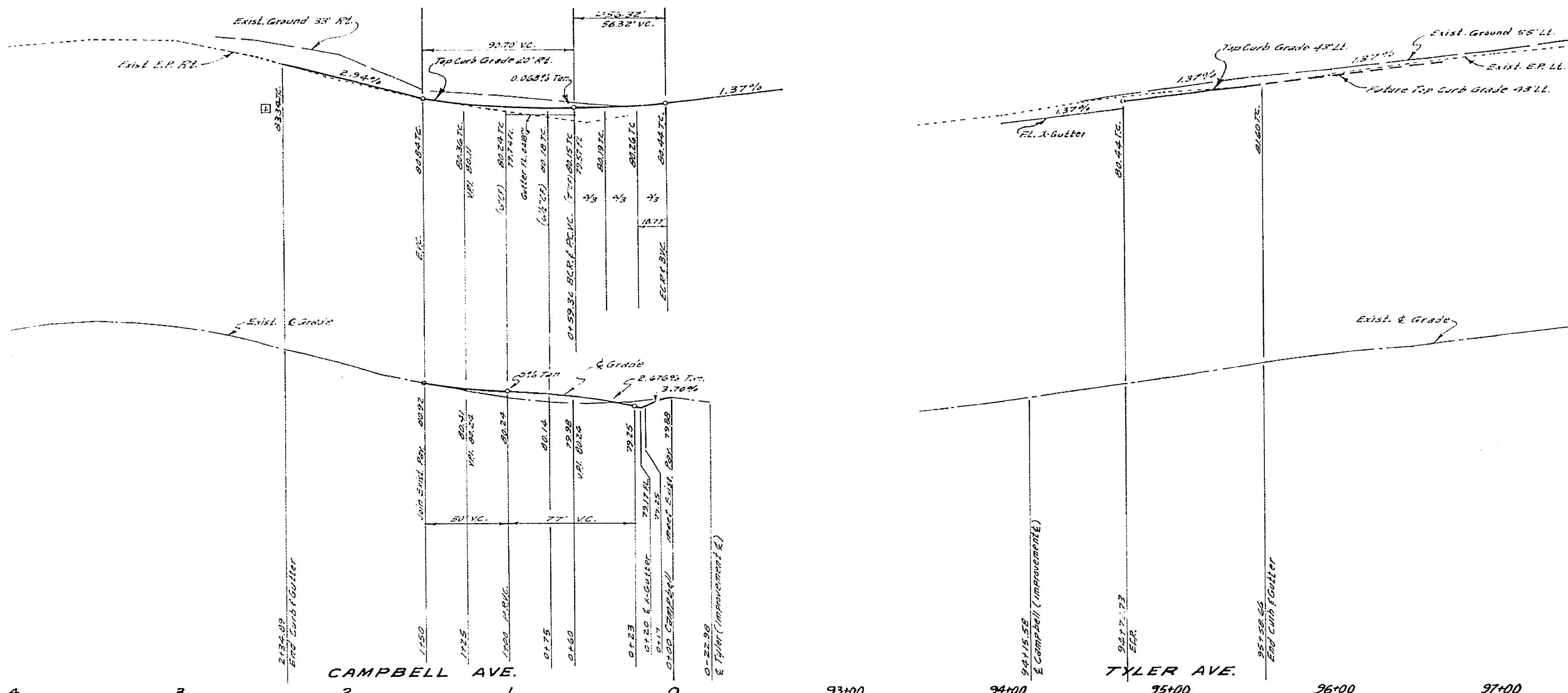
780

790 ±

± 790

780 ±

± 780



BENCH MARK
Elev. 787.409 R.R. 104 on 22' x 125' 231'E S.E. Cor. Robinson & Tyler. Webb. F.B. 6.22.45.

- GENERAL NOTES**
- It shall be the responsibility of the contractor to clear the right-of-way in accordance with the provisions of law as it affects such utility, including irrigation lines, and opportunities, and at no cost to the City.
 - Construction shall be in accordance with the City of Riverside, Department of Public Works, Specifications, etc., and Standard Drawings.
 - Prime coat, seal coat, and paint binder are required.
 - Grading will require a permit under Ordinance 5295 for a cut or fill exceeding 100 cubic yards, or a fill over one foot in depth.
 - The contractor shall allow for a soil test to be made by the City Engineer after the trees have been prepared for rough grade. Depth of base material shall be determined by the City of Riverside Department of Public Works, Standard Drawings.
 - Trim edge of existing pavement, where the existing pavement is shown and overlay paving is directed in the field to be a smooth even section.
 - The final sub grade shall have a composition of not less than 90% for a depth of 2.5 feet as determined by test method No. 200, 200" immediately prior to placement of the concrete.
 - The amount of asphalt overlay on existing pavement has been estimated by the Engineer to be approximately 525 tons.
 - Prior to sidewalk construction Contractor to contact Street Light Department for street light requirements, Sheet 105-7421.
 - Contractor to contact the City Engineer 24 hours prior to construction to negotiate for the City's portion of this project.

QUANTITY ESTIMATE

Curb & Gutter Standard No. 200 (6" C.R.)	523 L.F.
Sidewalk Standard No. 350	1,580 S.F.
Conv. Cross Gutter Standard No. 220	679 S.F.
2 1/2" A.C. Pav.	6,360 S.F.
Imported Base Material	
Driveway Standard No. 302	4 S.F.
2" x 4" Redwood Header	50 L.F.
W-21-R	2 S.F.
2 1/2" A.C. Pav. (BY CITY)	720 S.F.
2" x 4" Redwood Header (BY CITY)	130 L.F.
Imported Base Material (BY CITY)	10 C.Y.

ALBERT A. WEBB ASSOCIATES CIVIL ENGINEERS RIVERSIDE, CALIFORNIA APPROVED BY: <i>Albert A. Webb</i> DATE: 1/31/47 R.E. No. 2826 W.O. 66-277 FOR: <i>Webb Engineering</i> F.B. 6.22		CITY OF RIVERSIDE, CALIFORNIA DEPARTMENT OF PUBLIC WORKS APPROVED BY: <i>W. J. ...</i> DATE: 1-26-47 OFFICE ENGINEER PARK DEPARTMENT TRAFFIC DIVISION ASSISTANT CITY ENGINEER		STREET PLAN & PROFILE CAMPBELL AVE & TYLER AVE. NORTHWEST CORNER Zoning Code No. R-69-642 PROJECT NO. R-1209 SHEET 1 OF 1 FILE NO. 66-277-A HORIZ. SCALE: 1" = 50' VERT. SCALE: 1" = 5'	
---	--	--	--	---	--