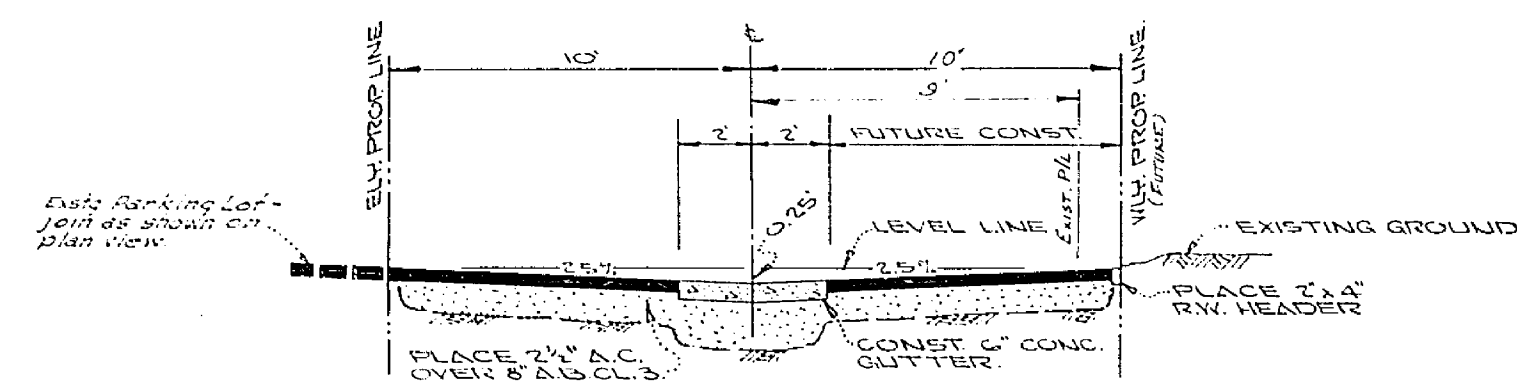
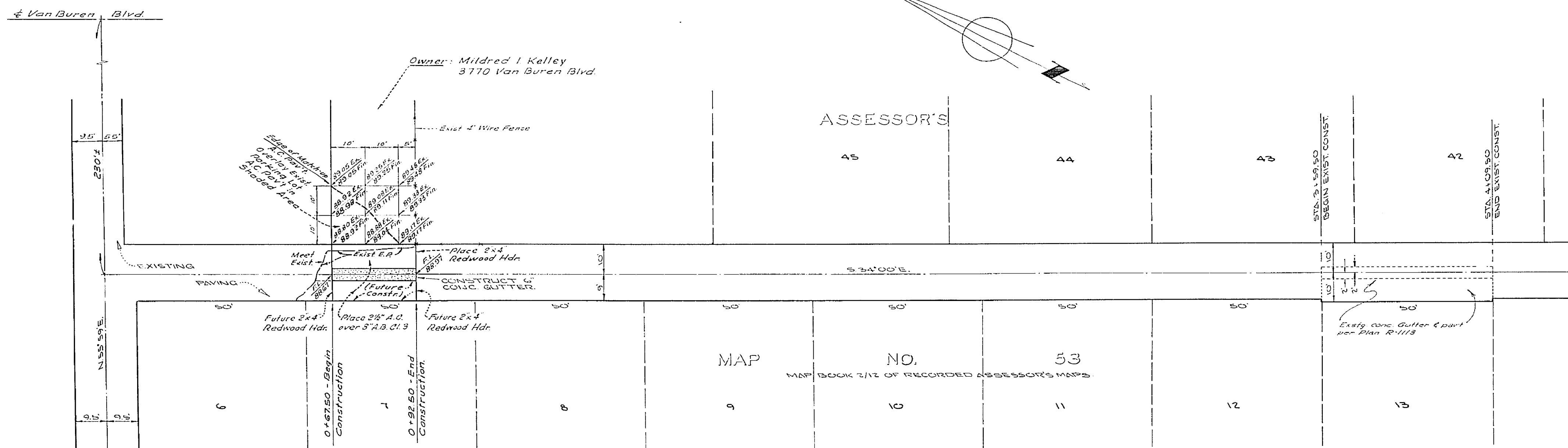
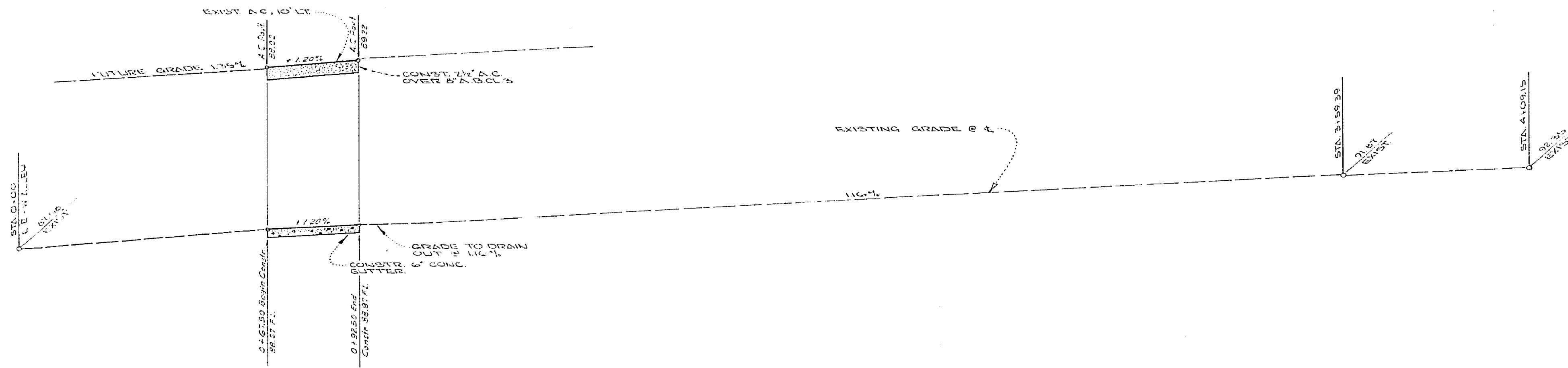


790-10' LT.

790-6



TYPICAL SECTION OF ALLEY
(PER CITY STD. NO. 110)
SCALE: 1" = 4"

GENERAL NOTES:

- IT SHALL BE THE RESPONSIBILITY OF THE CONTRACTOR TO CLEAR THE RIGHT OF WAY IN ACCORDANCE WITH THE PROVISIONS OF LAW AS IT AFFECTS EACH UTILITY INCLUDING UTILITY LINES AND APPURTENANCES AND AT NO COST TO THE CITY.
- CONSTRUCTION SHALL BE IN ACCORDANCE WITH THE CITY OF RIVERSIDE, DEPARTMENT OF PUBLIC WORKS, SPECIFICATIONS NO. 461 AND STANDARD DRAINAGES.
- PRIME COAT, SEAL COAT, AND PAINT BINDER ARE REQUIRED.
- GRADING WILL REQUIRE A PERMIT UNDER ORDINANCE 3093 FOR 7' CUT OR FILL EXCEEDING 100 CU YDS., OR A FILL OVER ONE FOOT IN DEPTH.

QUANTITY ESTIMATE

1. EXCAVATION	12 CU YDS.
2. 2 1/2\"/>	
3. 2\"/>	
4. 2\"/>	
5. 2\"/>	

BENCH MARK

U.S.C. 105, STD. 5150 AT N.E. CORNER OF ENTRANCE TO LIBRARY ON E. CORNER OF INTERSECTION OF ROOSEVELT STREET AND MAGNOLIA AVENUE. ELEV. 788.586

HUGH M. GALLAHER
CIVIL ENGINEER
RIVERSIDE CALIFORNIA
Approved by *Hugh M. Gallaher* Date *8-10-47*
R.C.E. NO. 7304

MARK	REVISIONS	APPR.	DATE
DESIGNED BY <i>CG</i>	DRAWN BY <i>CG</i>	CHECKED BY <i>LL</i>	

CITY OF RIVERSIDE, CALIFORNIA
DEPARTMENT OF PUBLIC WORKS
APPROVED BY *[Signature]* DATE *12-19-47*
OFFICE ENGINEER
PARK DEPARTMENT
TRAFFIC DIVISION
ASSISTANT CITY ENG. *[Signature]*

PLAN & PROFILE
ALLEY
SOUTH OF MAGNOLIA AVE. BETWEEN
ROOSEVELT ST. AND VAN BUREN BLVD.
BUILDING PERMIT
3770 VAN BUREN BLVD.
HORIZ. SCALE: 1" = 20' VERT. SCALE: 1" = 4'

PROJECT NO.
R-1240
SHEET 1 OF 1
FILE NO.