

34"

22"

17"

11"

8.5"

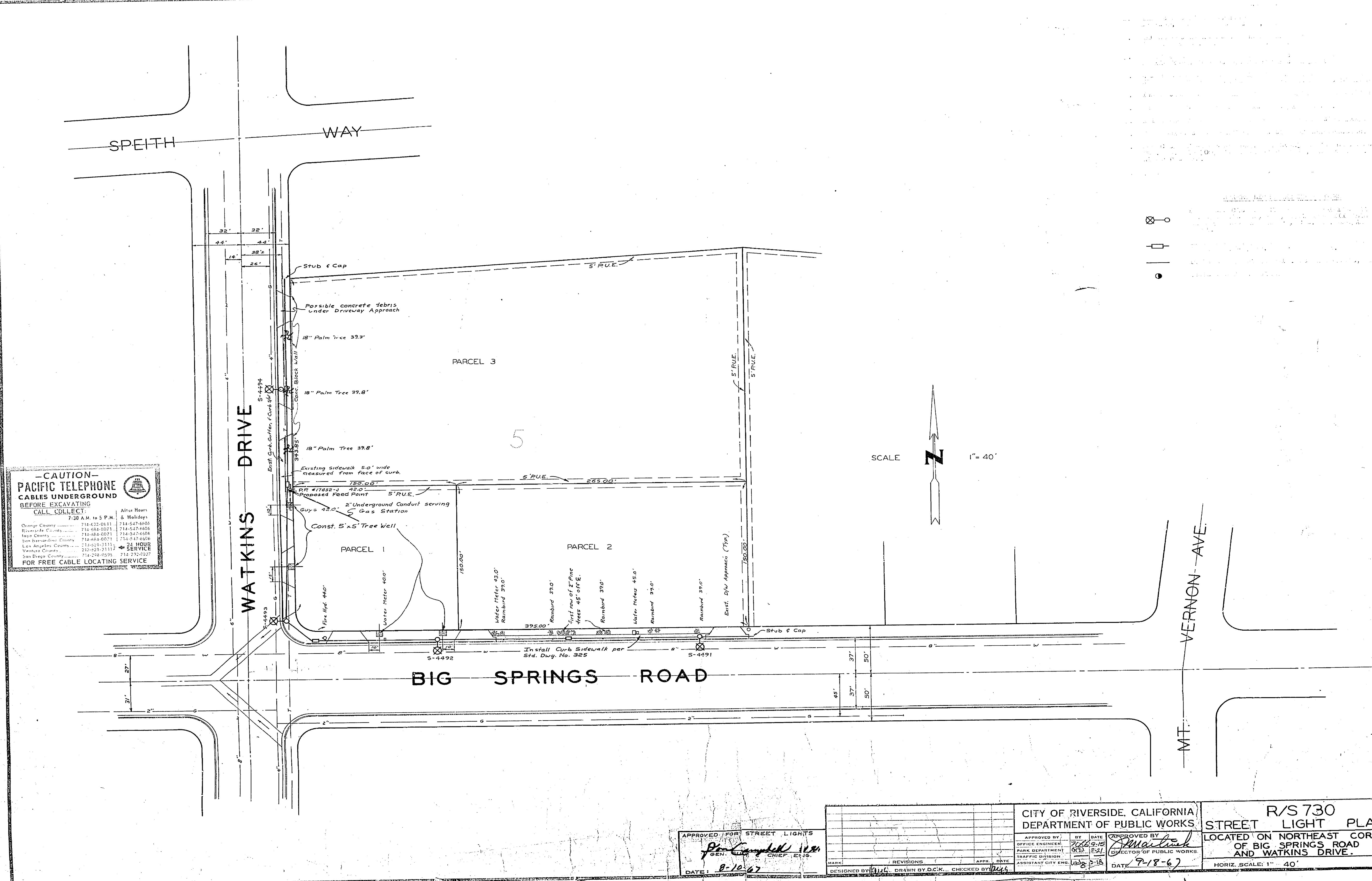
8.5"

11"

17"

22"

34"



**-CAUTION-  
PACIFIC TELEPHONE  
CABLES UNDERGROUND  
BEFORE EXCAVATING**

CALL COLLECT:  
7:30 A.M. to 5 P.M. After Hours & Holidays

Orange County 714-621-0611 714-547-6600  
Riverside County 714-984-0071 714-527-6600  
Inyo County 714-864-0071 714-527-6600  
San Bernardino County 714-884-0071 714-527-6600  
Los Angeles County 213-621-3111 24 HOUR SERVICE  
Ventura County 805-228-0394 714-527-6600  
San Diego County 619-228-0394 714-527-6600

FOR FREE CABLE LOCATING SERVICE

APPROVED FOR STREET LIGHTS		CITY OF RIVERSIDE, CALIFORNIA DEPARTMENT OF PUBLIC WORKS		R/S 730 STREET LIGHT PLAN		PROJECT NO. <b>R-1248</b>	
DESIGNED BY: <i>John Campbell</i> GEN. CHIEF ENGR. DATE: 8-10-67		DESIGNED BY: J.L.C. DRAWN BY: D.C.K. CHECKED BY: <i>W.L.L.</i> TRAFFIC DIVISION ASSISTANT CITY ENGR. DATE: 9-18-67		APPROVED BY: <i>W.L.L.</i> OFFICE ENGINEER, 9-18-67 PARK DEPARTMENT TRAFFIC DIVISION ASSISTANT CITY ENGR. DATE: 9-18-67		LOCATED ON NORTHEAST CORNER OF BIG SPRINGS ROAD AND WATKINS DRIVE. SHEET 1 OF 1 FILE NO. L5-13257	
REVISIONS APR. DATE				HORIZ. SCALE: 1" = 40'			

34"

22"

17"

11"

8.5"

8.5"

11"

17"

22"

34"