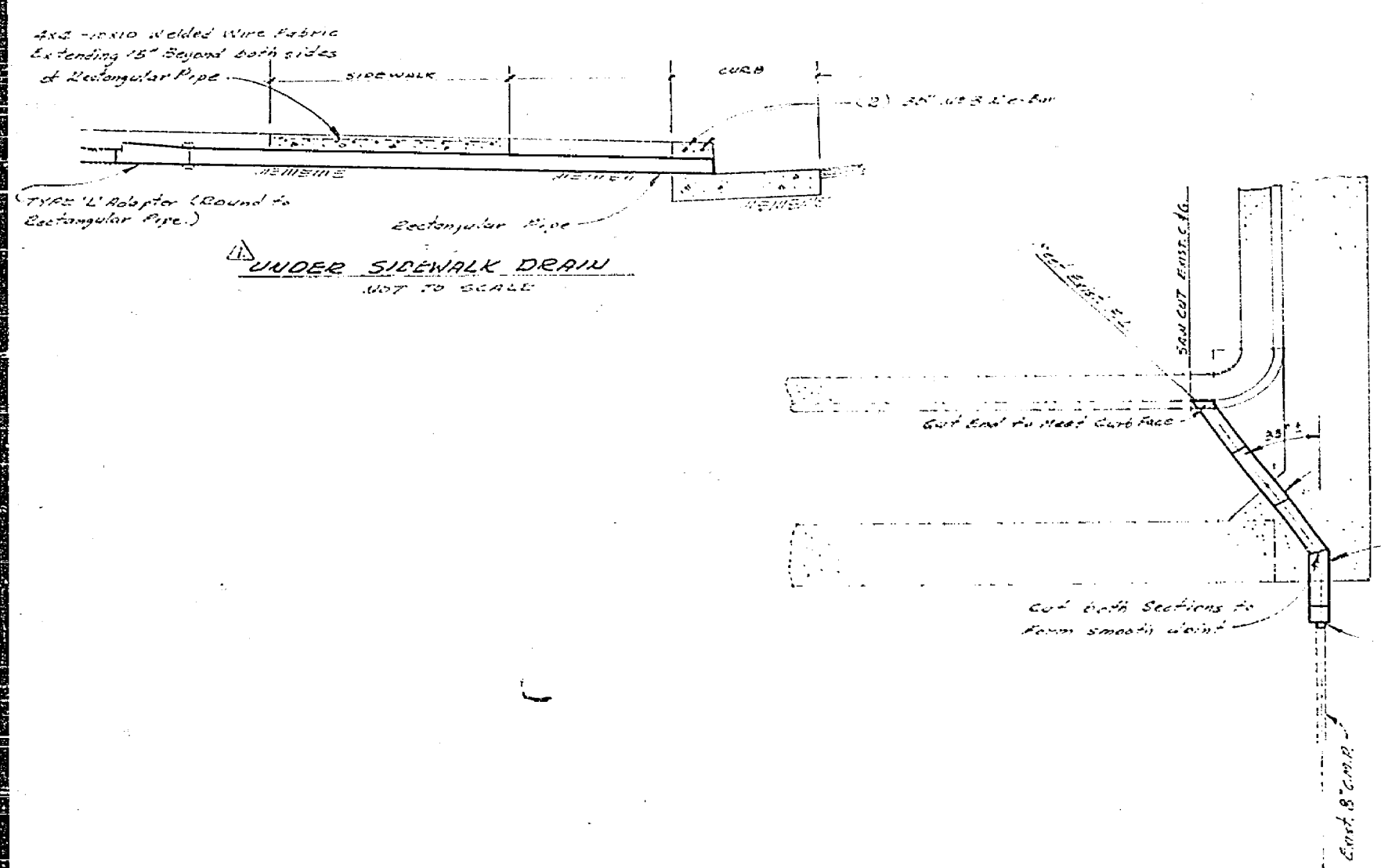


- General Notes:**
1. It shall be the responsibility of the contractor to clear the right of way in accordance with the provisions of law as it affects each utility including location lines and appurtenances and at no cost to the City.
  2. Construction shall be in accordance with the City of Riverside Dept. of Public Works, Specifications No. 161 and Standard Drawings.
  3. Frame cut, road cut and paint lines are required.
  4. Grading will require a permit under Ord. 2008 for a cut or fill exceeding 100 cu yds. or a fill over one foot in depth.
  5. Top edge of existing paving where new paving has existing pavement to a clean straight line - construct match up paving as shown and existing paving as directed in the field to produce a smooth ground surface.
  6. The amount of asphalt needed on the existing pavement has been estimated by the engineer to be approximately 100 tons.
  7. Guard trees to be specified by the Parks and Recreation Dept. Contact tree superintendent @ 781-7901 24 hrs. prior to sidewalk const.

**Bench Mark:**  
 CITY B.M. - 3.4' L. in northwest curb return Eileen St. and Manors St. P.B. 1946 - Elevation 185.00 feet.



<b>J. F. DAVIDSON ASSOCIATES</b> Civil Engineers, Surveyors, Planners Riverside, California Approved By: <i>Robert J. Davidson</i> Date: 1-27-69 R.C.E. No. 18699		CITY OF RIVERSIDE, CALIFORNIA DEPARTMENT OF PUBLIC WORKS APPROVED BY: <i>[Signature]</i> DATE: 1-27-69 OFFICE ENGINEER PARKS DEPARTMENT TRAFFIC DIVISION ASSISTANT CITY ENGINEER		<b>STREET PLAN &amp; PROFILE</b> <b>EILEEN STREET</b> SOUTH END - 120 FT. S.W. COR. OF CALLEMAN STREET Conditional Use Permit C-11-678 HORIZ. SCALE: 1" = 40' VERT. SCALE: 1" = 4' PROJECT NO. R-1354 SHEET 1 OF 1 FILE NO. 3349	
DESIGNED BY: <i>[Signature]</i>	DRAWN BY: <i>[Signature]</i>	CHECKED BY: <i>[Signature]</i>	DATE: 1-27-69	APPROVED BY: <i>[Signature]</i>	DATE: 1-27-69