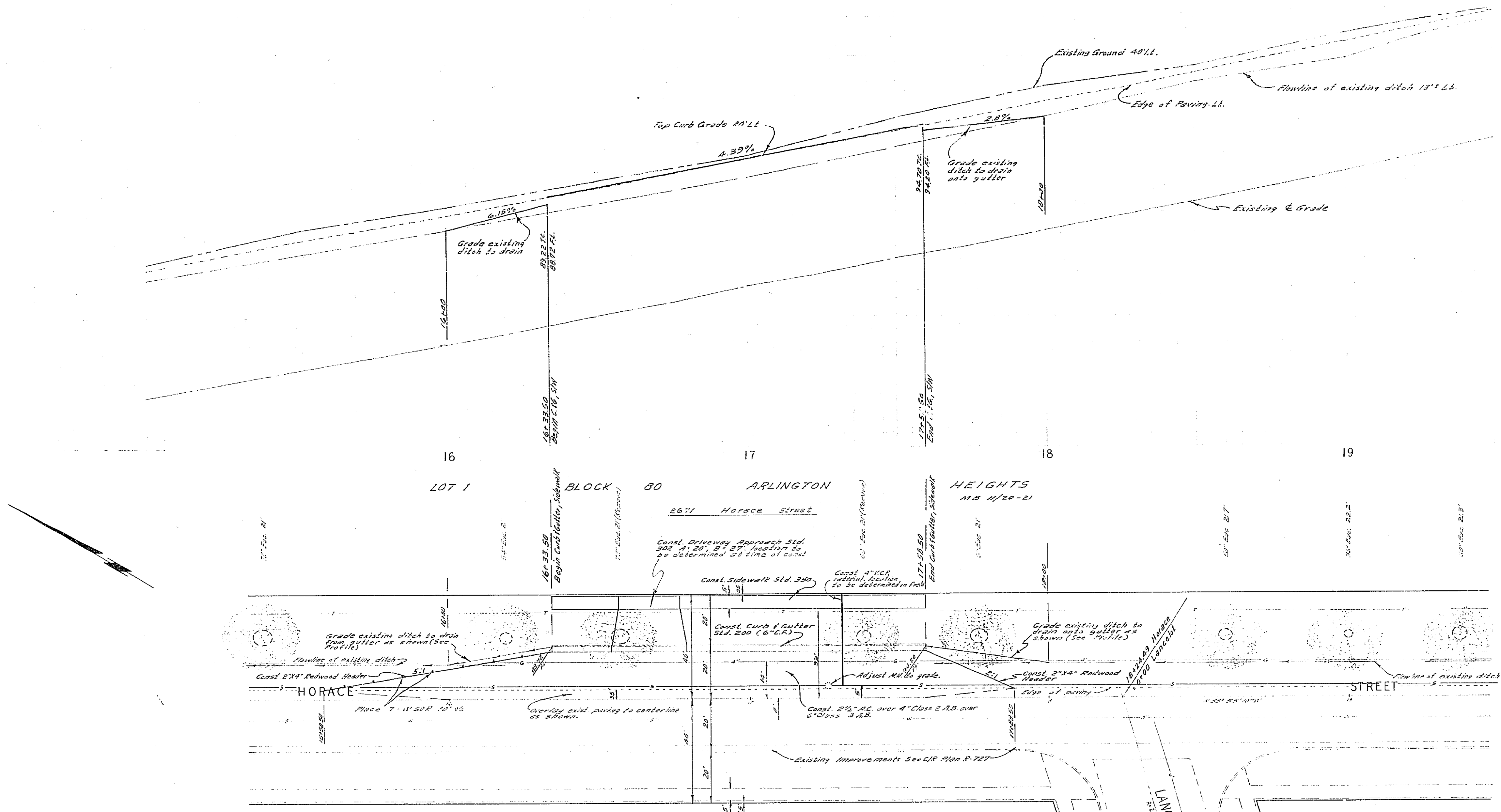


980

980 ±

1000

1000 ±

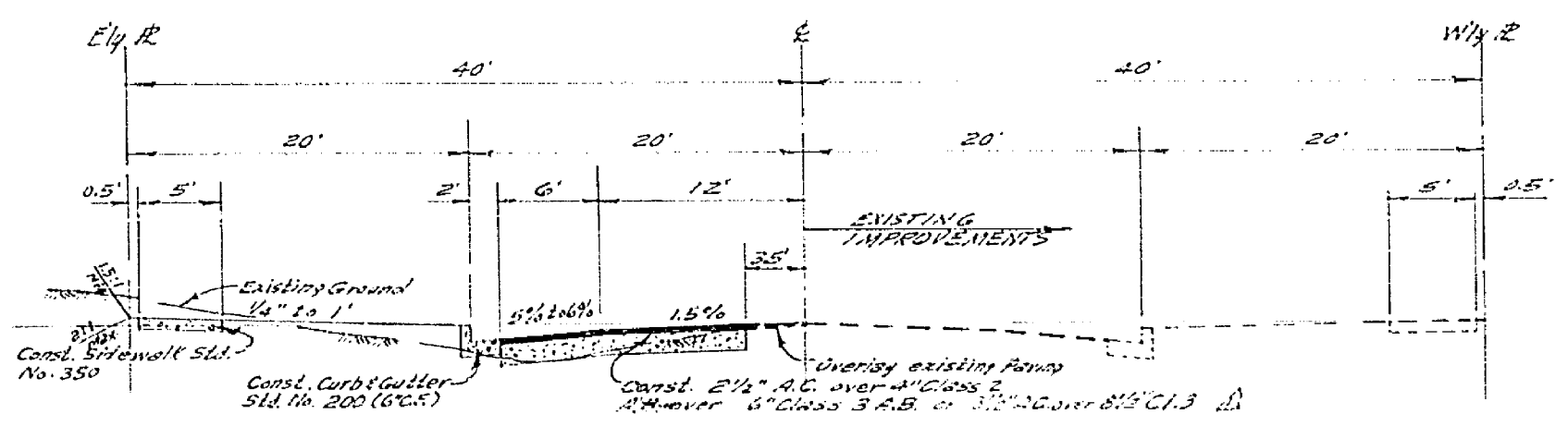


BENCH MARK
 Elev. 972.64. Rim of capped monument at
 intersection of Horace St. & Victoria Ave.
 C.R. Plan R-727.

- GENERAL NOTES**
1. It shall be the responsibility of the contractor to clear the right of way in accordance with the provisions of law as it affects each utility, including irrigation lines and easements, and at no cost to the City.
 2. Construction shall be in accordance with the City of Riverside, Department of Public Works, Specifications No. 401 and Standard Drawings.
 3. Prime coat, seal coat, and paint binder are required.
 4. Grading will require a permit under Ordinance 5095 for a cut or fill exceeding 100 cubic yards, or a fill over one foot in depth.
 5. The contractor shall arrange for a soil test to be made. If the Engineer deems the ground is insufficient to support the proposed grade, depth of subgrade and any necessary shall be determined by the City of Riverside Design Standards and Test Procedures.
 6. Trim edge of existing pavement, where new paving joins existing pavement, to a clean, straight line. Contract bidding paving is shown and overlay paving as directed in the field to produce a smooth road section.
 7. The amount of paving overlay on existing pavement has been estimated by the Engineer to be approximately 25,567 SF.

QUANTITY ESTIMATE

Curb/Gutter Standard No. 200 (8'x8')	125 LF
Sidewalk Standard No. 350	625 SF
Driveway Approach Standard No. 302	1 Ea.
2 1/4" A.C. Paving	2,567 SF
W-60-R	7 Ea.
Tree Removal	2 Ea.
R.C. Overlay	6 1/4 Ton
4" H.C.P.	35 LF
4" x 8" Tee	1 Ea.



**TYPICAL SECTION
 HORACE STREET**
 NO SCALE
 T.T. '66

ALBERT A. WEBB ASSOCIATES
 CIVIL ENGINEERS
 RIVERSIDE, CALIFORNIA
 APPROVED BY: *[Signature]* DATE: 5/22/69
 R.E. NO. 9076

CITY OF RIVERSIDE, CALIFORNIA
 DEPARTMENT OF PUBLIC WORKS
 APPROVED BY: *[Signature]* DATE: 5-1-70
 OFFICE ENGINEER: *[Signature]*
 TRAFFIC DIVISION: *[Signature]*
 ASSISTANT CITY ENGINEER: *[Signature]*
 DATE: 6-13-69

STREET PLAN AND PROFILE
HORACE STREET
 Eastern Side, between Victoria Ave.
 and Leachet Court.
 Building Permit 2671 Horace St.

PROJECT NO.
 R-1364
SHEET 1 OF 1
FILE NO. 69-106A
 HORIZ. SCALE: 1" = 20'
 VERT. SCALE: 1" = 4'

W.O. 69-106 FOR: *[Signature]* DEVELOPER
 FB. 1002

DESIGNED BY: BEL
 DRAWN BY: BEL
 CHECKED BY: ENL