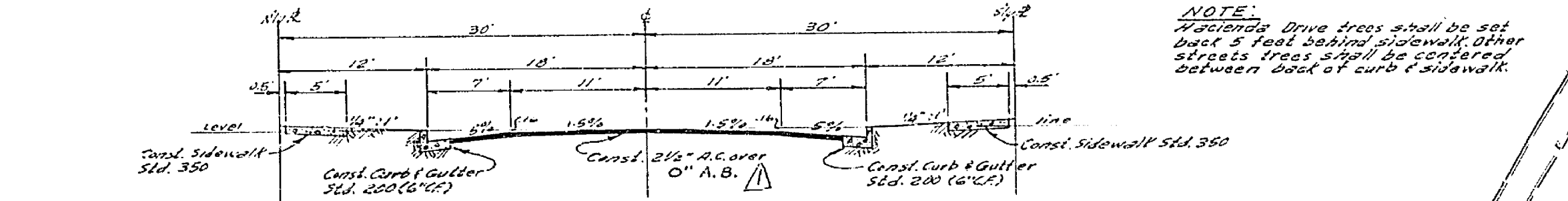
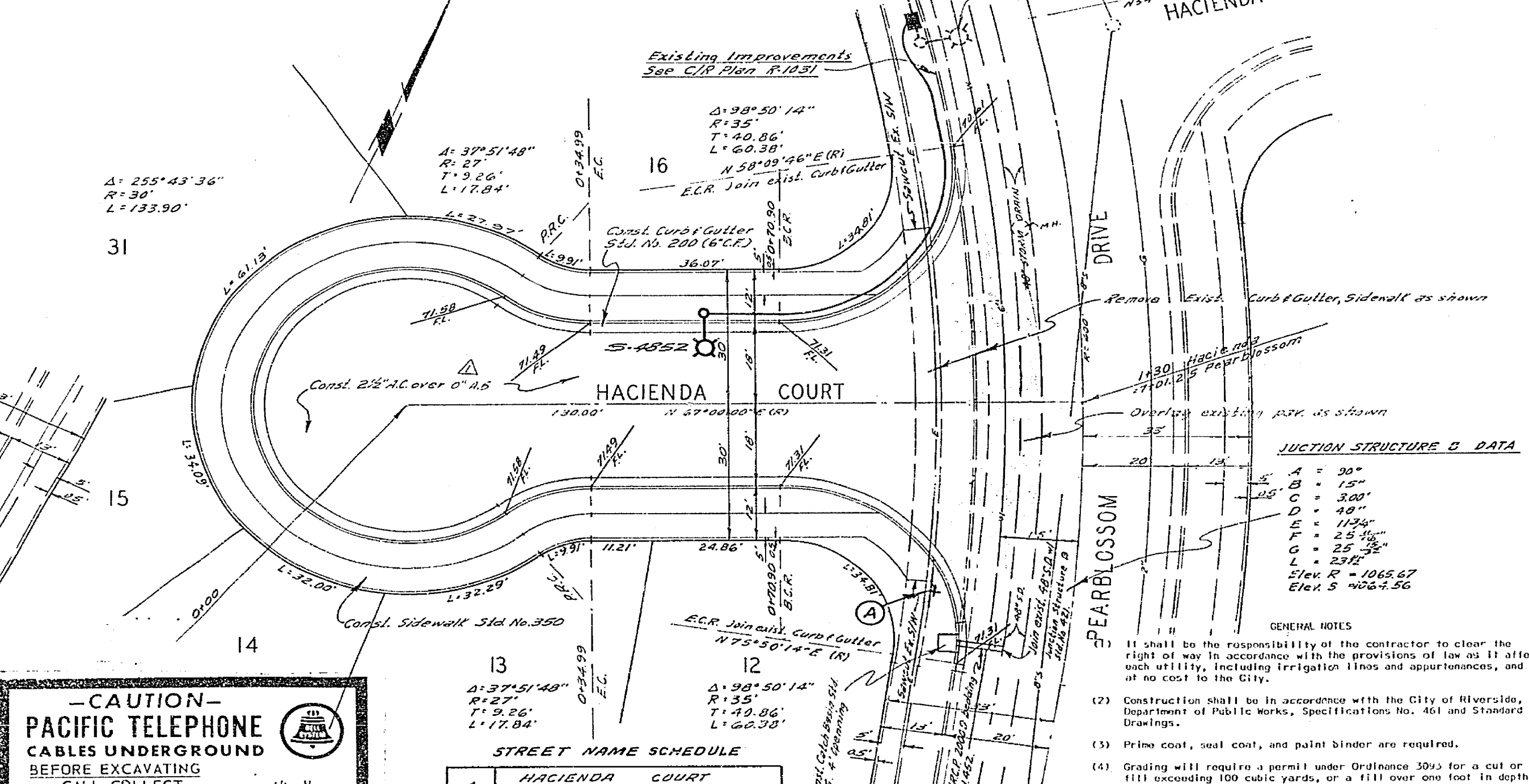
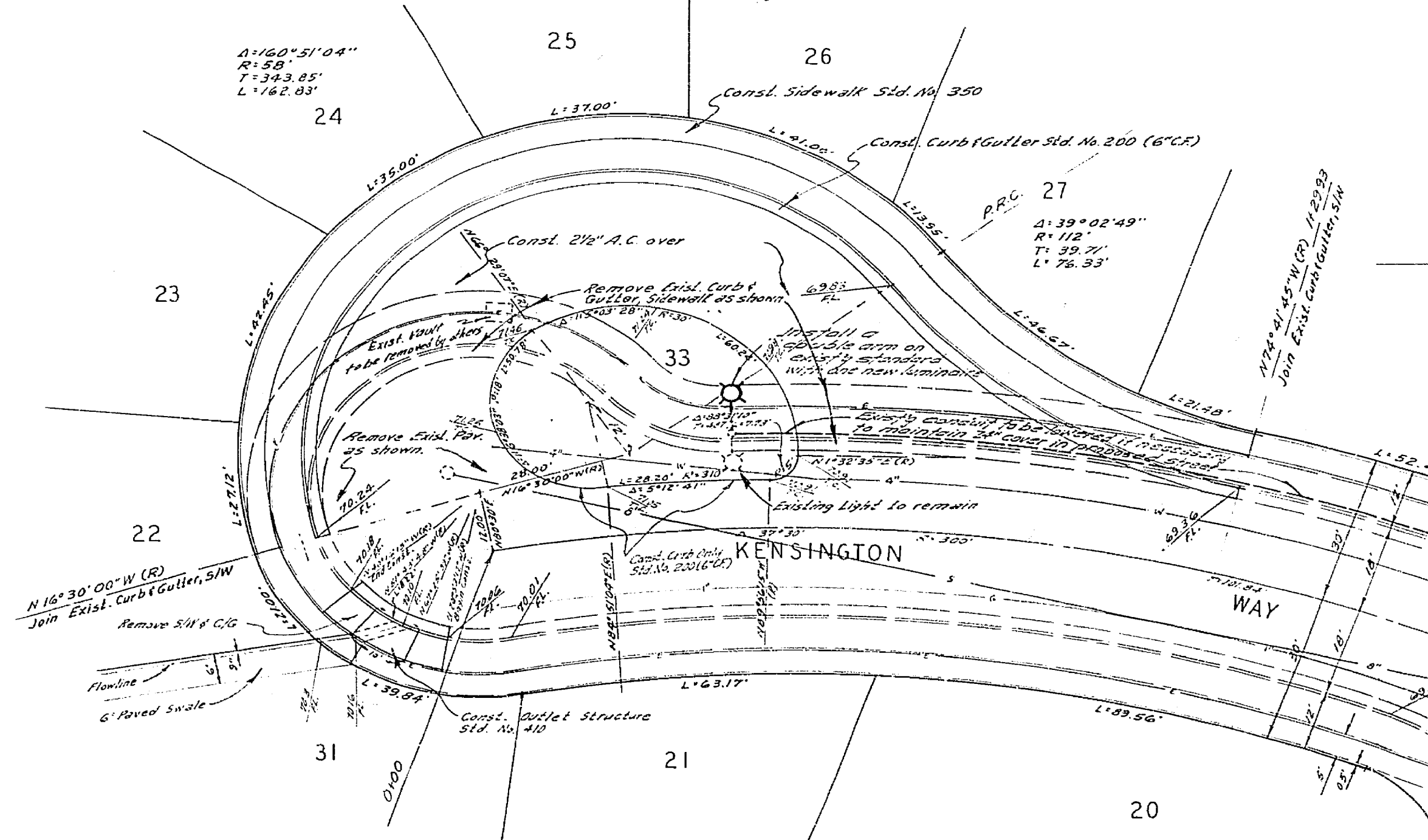


- STREET LIGHT SPACES**
- (1) All street light standards and pullboxes to be placed in accordance with the latest revision of the City of Riverside Public Utilities Department Street Light Specification #113.
 - (2) All street light standards shall be checked for clearance of driveways, fire hydrants, and radius returns.
 - (3)
 - (4)
- (5) All construction to comply with the latest revision of the City of Riverside Public Utilities Department Street Light Specification #113.
- (6) Inspection to be called for as outlined in specification #113.
- (7) This is a two wire 240 volt multiple system.
- (8) All cable to be as specified in Specification #113.
- (9) Installed at time of construction.
- (10) See City of Riverside Ord. 144, 1968 for light standard details & Ord. 14, 1952 for multiple system.
- (11) Contractor to obtain correct clearance before beginning work on existing system.

- STREET LIGHT LEGEND**
- Indicates City of Riverside multiple wire system at 240 volt multiple system.
 - Indicates 120 volt outdoor branch circuits to be installed at time of construction.
 - Indicates 120 volt outdoor branch circuits to be installed at time of construction.
 - Indicates 120 volt outdoor branch circuits to be installed at time of construction.
 - Indicates 120 volt outdoor branch circuits to be installed at time of construction.

QUANTITY ESTIMATE

Curb & Gutter Standard 200 (6" C.F.)	604	L.F.
Sidewalk Standard 350	3,133	S.F.
2 1/2" A.C. Pav.	12,200	S.F.
Driveway Approach Standard 302	30	S.F.
Curb & Gutter Removal	335	L.F.
Sidewalk Removal	1,525	S.F.
A.C. Pavement Removal	3,522	S.F.
Curb Only Standard 200 (6" C.F.)	147	L.F.
Catch Basin Standard 405 (4" opening)	1	EA.
15" A.C.P. 2000 D	1	L.F.
Junction Structure B Standard 421	1	EA.
Asphalt Overlay	7 1/2	Ton
Outlet Structure Standard No. 410	1	EA.



NOTE: Hacienda Drive trees shall be set back 5 feet behind sidewalk. Other streets trees shall be set back between back of curb & sidewalk.

-CAUTION-
PACIFIC TELEPHONE
CABLES UNDERGROUND
BEFORE EXCAVATING
CALL COLLECT

7:30 A.M. to 5 P.M. & Holidays
Orange County 714-523-0811
Riverside County 714-880-0071
San Diego County 714-684-0071
San Bernardino County 714-841-0111
Los Angeles County 213-621-3111
San Diego County 714-523-0811

FOR FREE CABLE LOCATING SERVICE

APPROVED FOR STREET LIGHTS
UTILITIES CHIEF ENG.
DATE: 2-19-69

ALBERT A. WEBB ASSOCIATES
CIVIL ENGINEERS
RIVERSIDE, CALIFORNIA
APPROVED BY: [Signature] DATE: 7/10/69
R.E. NO. 9876

STREET NAME SCHEDULE

A	HACIENDA COURT
A	PEAR BLOSSOM DRIVE

Contractor will control Traffic on Before ordering sign.

BENCH MARK
Elev. 1064.942 C.R. 10/2/52

APPROVED BY: [Signature] DATE: 7/10/69
DIRECTOR OF PUBLIC WORKS

PROJECT NO.
R-1373
15-13354
SHEET 1 OF 1

HORIZ. SCALE: 1" = 20' VERT. SCALE: 1" = 4'