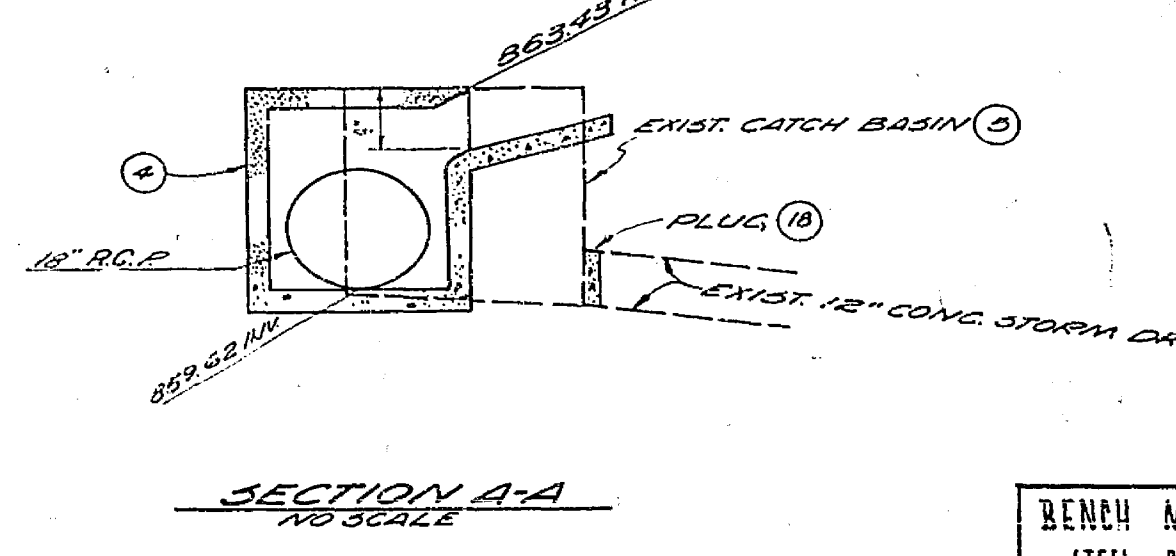
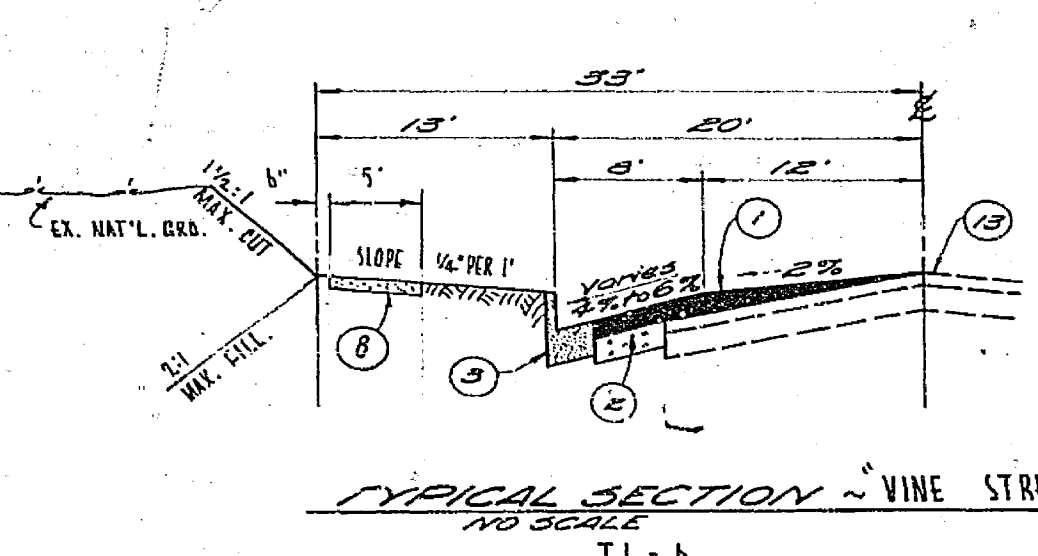
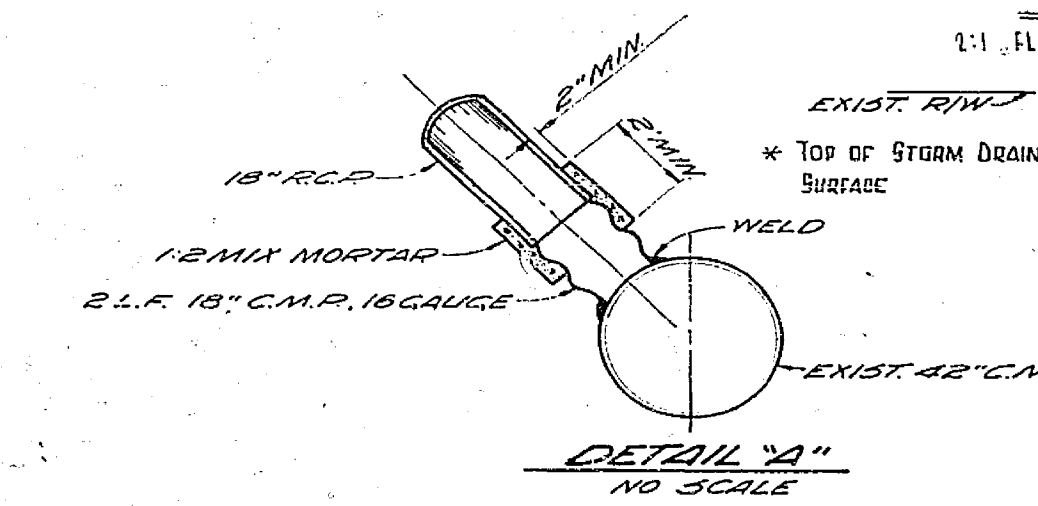
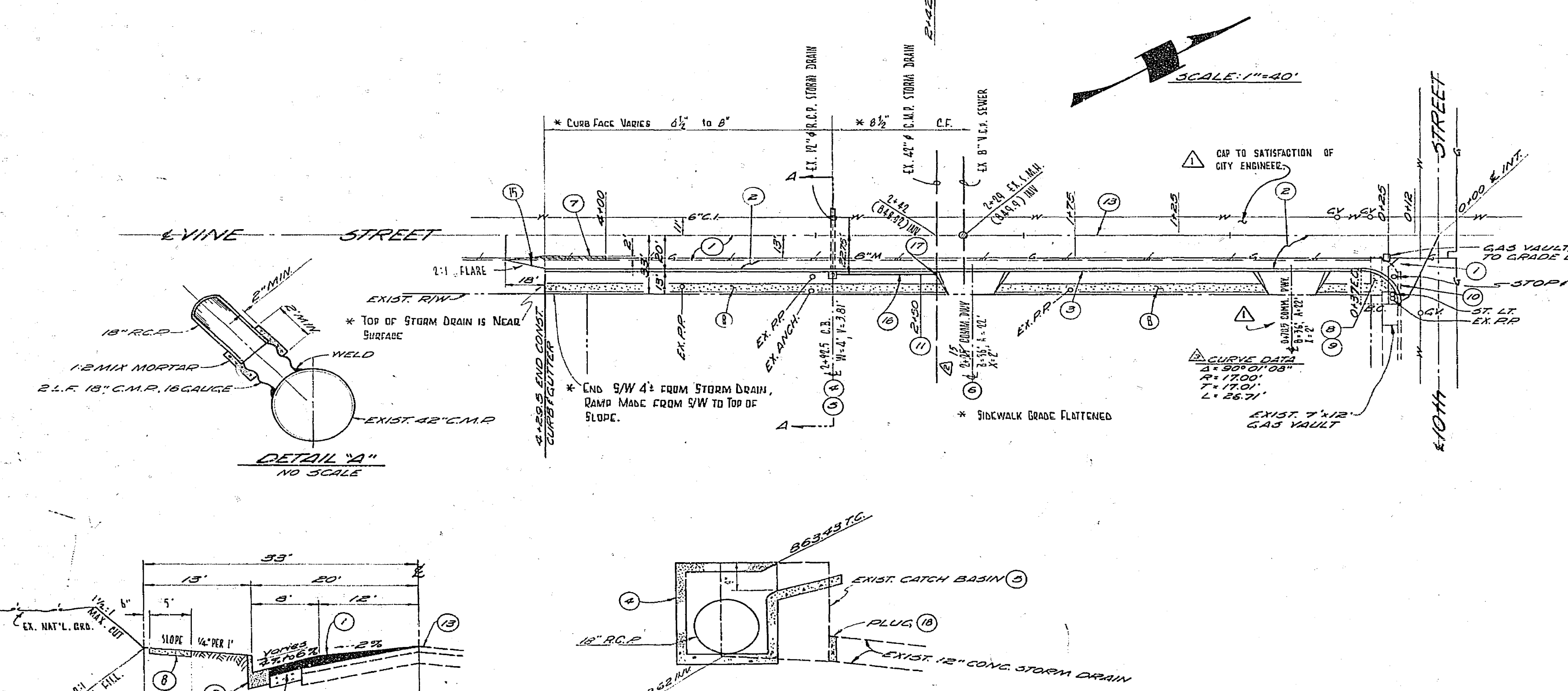


- GENERAL NOTES**
- IT SHALL BE THE RESPONSIBILITY OF THE CONTRACTOR TO CLEAR THE RIGHT OF WAY IN ACCORDANCE WITH THE PROVISIONS OF THE LAW AS IT AFFECTS EACH UTILITY INCLUDING IRRIGATION LINES AND APPURTENANCES AND AT NO COST TO THE CITY.
 - CONSTRUCTION SHALL BE IN ACCORDANCE WITH CITY OF RIVERSIDE DEPARTMENT OF PUBLIC WORKS SPECIFICATIONS NO. 451 AND STANDARD DRAWINGS.
 - PRIME COAT SEAL COAT AND PAINT BINDER ARE REQUIRED.
 - GRADING WILL REQUIRE A PERMIT UNDER ORDINANCE NO. 5093 FOR A CUT OR FILL EXCEEDING 100 CUBIC YARDS OR A FILL OVER ONE FOOT IN DEPTH.
 - TRIM EDGE OF EXISTING PAVEMENT WHERE NEW PAVING JOINS EXISTING PAVING TO A CLEAN STRAIGHT EDGE. CONSTRUCT MATCH-UP PAVING AS SHOWN AND OVERLAY AS DIRECTED IN THE FIELD TO PRODUCE A SMOOTH CROWN SELECTION. ENGR. ESTIMATE OVERLAY TO BE 90 TONS.
 - TRUCKWAY APPROACHES SHALL BE IN ACCORDANCE WITH CITY OF RIVERSIDE STD. DWG. NO. 302 AND SHALL BE APPROVED BY THE TRAFFIC ENGINEERING DIVISION.

- CONSTRUCTION NOTES**
- CONSTRUCT VARIABLE THICKNESS A.C. PAVEMENT
 - CONSTRUCT 3 1/2" A.C. PAVEMENT OVER 13" R.C.P. CLASS B, W/ SEAL COAT
 - CONSTRUCT CURB AND GUTTER PER CITY OF RIVERSIDE STANDARD DRAWING NO. 200
 - CONSTRUCT TYPE B CATCH BASIN PER CITY OF RIVERSIDE STANDARD DRAWING NO. 400
 - REMOVE EXISTING CATCH BASIN
 - CONSTRUCT COMMERCIAL DRIVEWAY PER CITY OF RIVERSIDE STANDARD DRAWING NO. 302
 - REMOVE EXISTING A.C. PAVEMENT
 - CONSTRUCT 6" THICK CONCRETE SIDEWALK PER CITY OF RIVERSIDE STANDARD DRAWING NO. 350
 - REMOVE EXISTING SIDEWALK
 - REMOVE EXISTING CURB
 - CONSTRUCT CONCRETE COLLAR
 - INSTALL 12" CONCRETE STORM DRAIN
 - TRIM FEATHER OVER AND JOIN
 - RELOCATE STOP STREET NAME SIGN
 - CONSTRUCT 1" x 4" REINFORCED HEADER
 - INSTALL 18" R.C.P. STORM DRAIN
 - CONSTRUCT PIPE CONNECTION PER DETAIL "A"
 - CONSTRUCT BRICK AND MORTAR PLUG



PRIVATE ENGINEER'S NOTICE TO CONTRACTOR

The existence and location of any underground utilities or structures shown on these plans are obtained by a search of available records. To the best of our knowledge there are no existing utilities except those shown on this plan. The Contractor is required to take all precautionary measures to protect the utilities shown, and any other lines or structures not shown on these plans, and is responsible for the protection of, and any damage to these lines or structures.

ESTIMATE OF QUANTITIES	
CLEARING & GRUBBING	Lump Sum
PIPE CONNECTION	1 EA.
VARIABLE THICKNESS A.C. PAVEMENT	4,318.5 F.
3 1/2" A.C. OVER 13" R.C.P. CLASS B, W/ SEAL COAT	3,370.5 F.
CURB & GUTTER	480 L.F.
REMOVE CURB	18 L.F.
CATCH BASIN - TYPE B, V. 3.01	1 EA.
REMOVE CATCH BASIN	1 EA.
COMMERCIAL DRIVEWAY	377.5 F.
REMOVE EXISTING A.C. PAVEMENT	1,810.5 F.
6" THICK CONCRETE SIDEWALK	1,940 S.F.
REMOVE SIDEWALK	105.5 F.
CONCRETE COLLAR	1 EA.
12" R.C.P. STORM DRAIN	46 L.F.
RELOCATE STOP STREET NAME SIGN	1 EA.
BRICK & MORTAR PLUG	1 EA.

PREPARED IN THE OFFICE OF
WILLIAM G. CHURCH
 CONSULTING CIVIL ENGINEERS
 3928 CAMPUS DRIVE
 NEWPORT BEACH
 CALIFORNIA 92660
 PHONE 714-540-7377

BENCH MARK
 STEEL PIN IN E.C.B. MULBERRY
 65' N OF 10TH ST. (STATE HWY)
 (1954) ELEV. = 864.489

CITY OF RIVERSIDE, CALIFORNIA
 DEPARTMENT OF PUBLIC WORKS

IMPROVEMENT PLAN FOR
 EAST SIDE
 VINE STREET
 FROM 6TH ST. TO 430TH SOUTH
 BULLHORN BLVD. @ 6TH ST.

PROJECT NO. R-1383
SHEET 1 OF 1
FILE NO.

DESIGNED BY JOHN T. MUKLEN
DRAWN BY
CHECKED BY L.S.

APPROVED BY [Signature]
 OFFICE ENGINEER
 PARK DEPARTMENT
 TRAFFIC DIVISION
 ASSISTANT CITY ENGINEER

DATE 9/26/69

HORIZ. SCALE: 1" = 4'
VERT. SCALE: 1" = 4'