

TYPICAL SECTION  
CENTRAL AVENUE  
NO SCALE

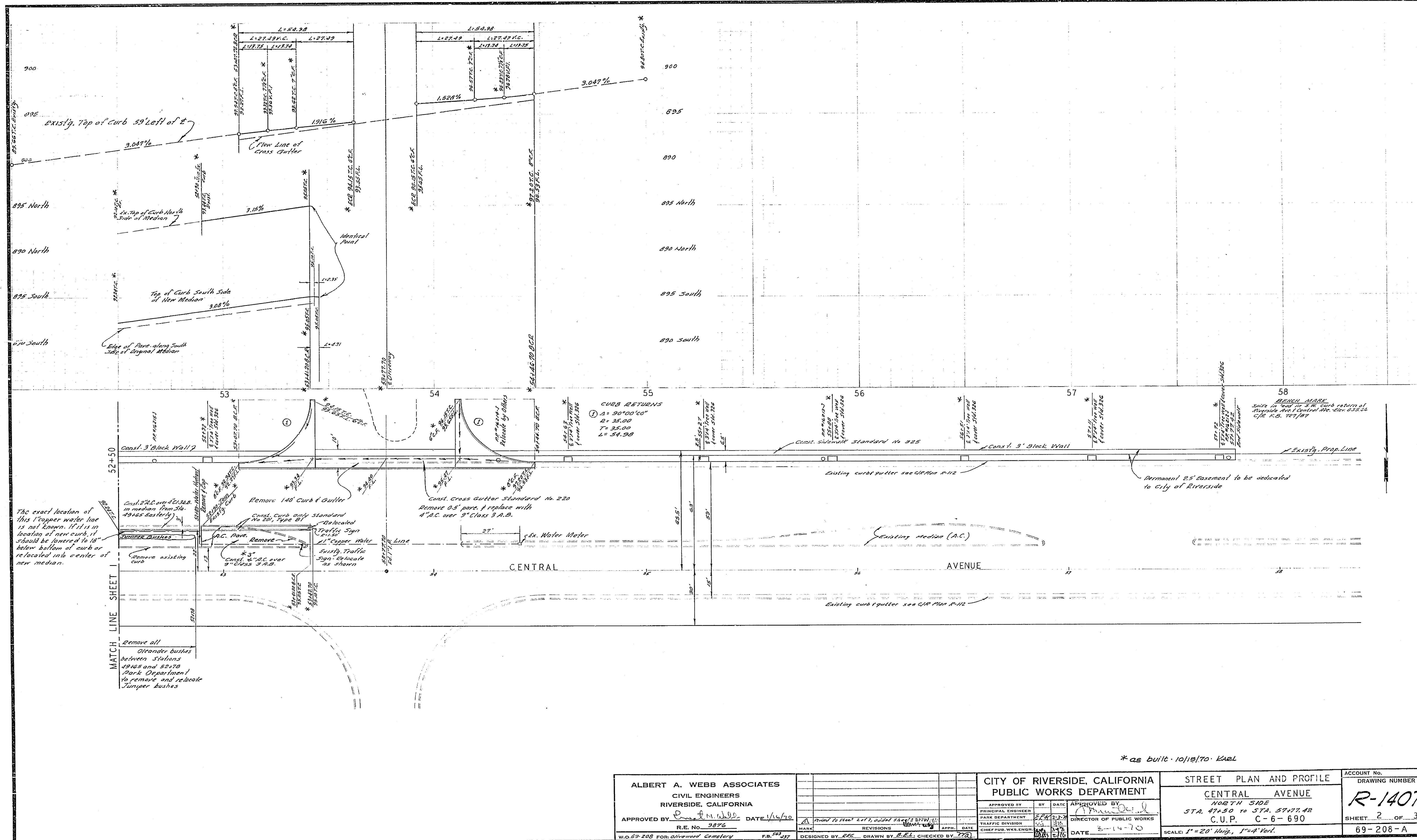
- GENERAL NOTES**
- It shall be the responsibility of the contractor to clear the right of way in accordance with the provisions of law as it affects each utility, including irrigation lines and appurtenances, and of no cost to the City.
  - Construction shall be in accordance with the City of Riverside Department of Public Works, Specifications No. 404 and Standard Drawings.
  - Prime coat, seal coat, and paint binder are required.
  - Grading will require a permit under Ordinance 3079 for a cut or fill exceeding 100 cubic yards, or a fill over one foot in depth.
  - The Subdivider shall arrange for a soil test to be made by a Registered Professional Engineer. The strength and composition of the soil shall be determined and the results shall be determined by the City of Riverside Design Standards and Test Methods.
  - Trim edge of existing pavement, where new paving joint existing pavement, to a clean, straight line. Construct matching paving as shown and overlay paving as directed in the field to produce a smooth cross section.

**QUANTITY ESTIMATE**

△ Curb & gutter standard No. 200	236 L.F.
△ Curb Only Standard No. 201, Type B1	475 L.F.
△ 4" A.C. paving	3500 S.F.
△ Grass Gutter Standard No. 220	1,240 S.F.
△ Curb Only removal	475 L.F.
△ Sid. 325 Tree Well Covers	15 Pairs
△ Sid. 325 Sidewalk	3,220 S.F.
△ Curb & Gutter Removal	2,346 S.F.
△ 9" Class 3 A.B.	3,600 S.F.
△ 2" A.C. Paving	1,500 S.F.
△ 1" Class 3 A.B.	1,800 S.F.
△ Grass Gutter Removal	285 S.F.
△ 2 1/2" A.C. Paving	700 S.F.
△ 6" Class 2 A.B.	700 S.F.
△ 2" x 4" Roadway Header	20 L.F.
△ RIB(RL) Standard No. 666	1 Ea.

\* as built - 10/12/70 - Karl

<b>ALBERT A. WEBB ASSOCIATES</b> CIVIL ENGINEERS RIVERSIDE, CALIFORNIA APPROVED BY: <i>Albert A. Webb</i> DATE: 1/16/70 R.E. No. 3876	CITY OF RIVERSIDE, CALIFORNIA <b>PUBLIC WORKS DEPARTMENT</b> APPROVED BY: <i>[Signature]</i> DATE: 1/16/70 DIRECTOR OF PUBLIC WORKS DATE: 1-16-70	<b>STREET PLAN AND PROFILE</b> <b>CENTRAL AVENUE</b> NORTH SIDE STA. 47+50 TO STA. 57+74.02 C.U.P. C-6-690	ACCOUNT NO.
			DRAWING NUMBER <b>R-1407</b>
W.D. 69-208 FOR: <i>Olivewood Cemetery</i> P.M. # 437	DESIGNED BY: <i>B.E.L.</i> DRAWN BY: <i>B.E.L.</i> CHECKED BY: <i>J.T.Q.</i>	SCALE: 1" = 20' Horiz., 1" = 4' Vert.	SHEET 1 OF 3 69-208-A



The exact location of this 1" copper water line is not known. It is in location of new curb, it should be lowered to 18" below bottom of curb or relocated into center of new median.

MATCH LINE SHEET 1  
Remove all Oleander bushes between Stations 49+65 and 52+78. Park Department to remove and relocate Juniper bushes.

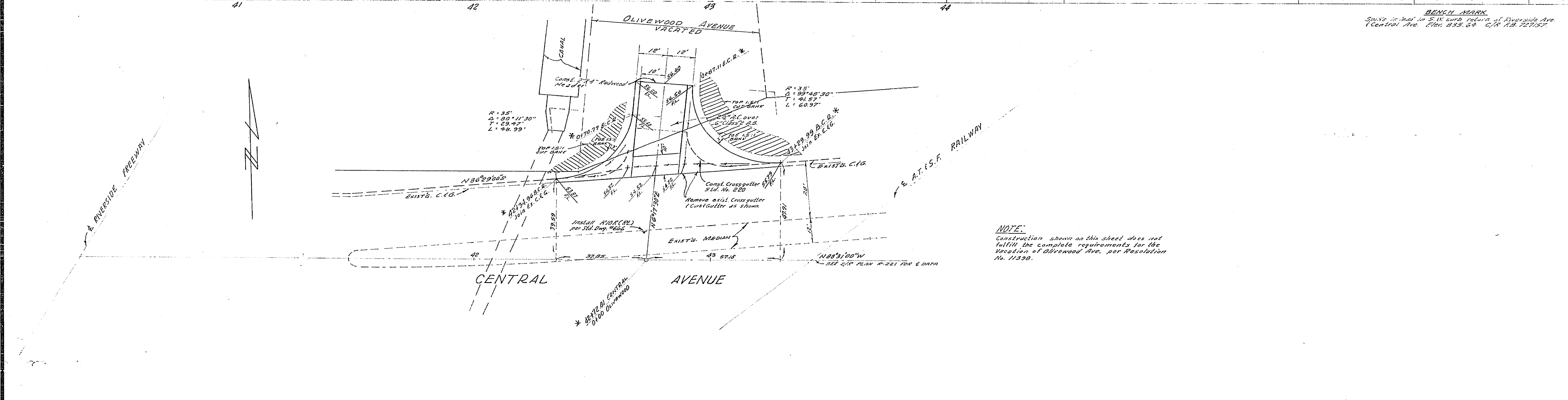
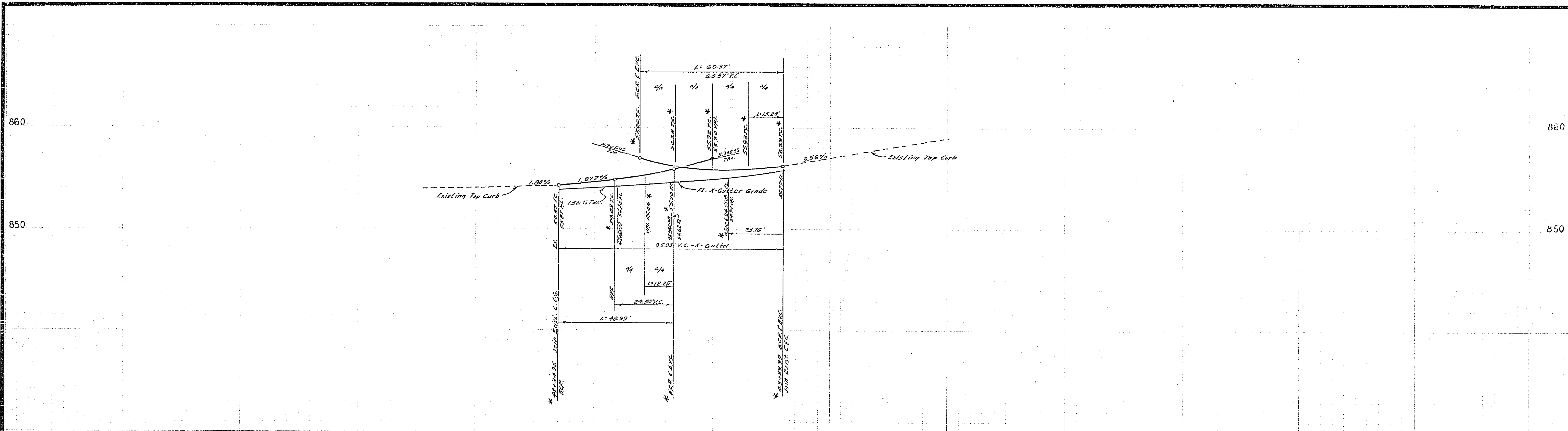
ALBERT A. WEBB ASSOCIATES  
CIVIL ENGINEERS  
RIVERSIDE, CALIFORNIA  
APPROVED BY: *[Signature]* DATE: 1/14/70  
R.E. No. 3876

CITY OF RIVERSIDE, CALIFORNIA  
PUBLIC WORKS DEPARTMENT  
APPROVED BY: *[Signature]* DATE: 1-14-70  
TRAFFIC DIVISION  
CHIEF PUBLIC WORKS ENGINEER: *[Signature]*

STREET PLAN AND PROFILE  
CENTRAL AVENUE  
NORTH SIDE  
STA. 47+50 TO STA. 57+77.42  
C.U.P. C-6-690  
SCALE: 1" = 20' Horiz., 1" = 4' Vert.

ACCOUNT No. DRAWING NUMBER  
R-1407  
SHEET 2 OF 3  
69-208-A

\* as built - 10/15/70 - Kael



\* as built - 10/15/70 - Karl

ALBERT A. WEBB ASSOCIATES CIVIL ENGINEERS RIVERSIDE, CALIFORNIA APPROVED BY: <i>[Signature]</i> DATE: 9/30/70 R.E. No. 9872 W.O. 69-208 FOR Olivewood Cemetery F.B. 247, 437	CITY OF RIVERSIDE, CALIFORNIA PUBLIC WORKS DEPARTMENT		STREET PLAN AND PROFILE CENTRAL AVENUE NORTH SIDE STA. 42+34.96 TO STA. 43+29.99 C.U.P. C-6-690		ACCOUNT NO. DRAWING NUMBER <b>R-1407</b> SHEET 3 OF 3 69-208-A
	DESIGNED BY: BEL DRAWN BY: BEL CHECKED BY: BEL	REVISIONS APPR. DATE	APPROVED BY: <i>[Signature]</i> TRAFFIC DIVISION CHIEF P.W.S. ENGR.	APPROVED BY: <i>[Signature]</i> DIRECTOR OF PUBLIC WORKS DATE: 10/1/70	SCALE: 1" = 20' Horiz., 1" = 4' Vert.