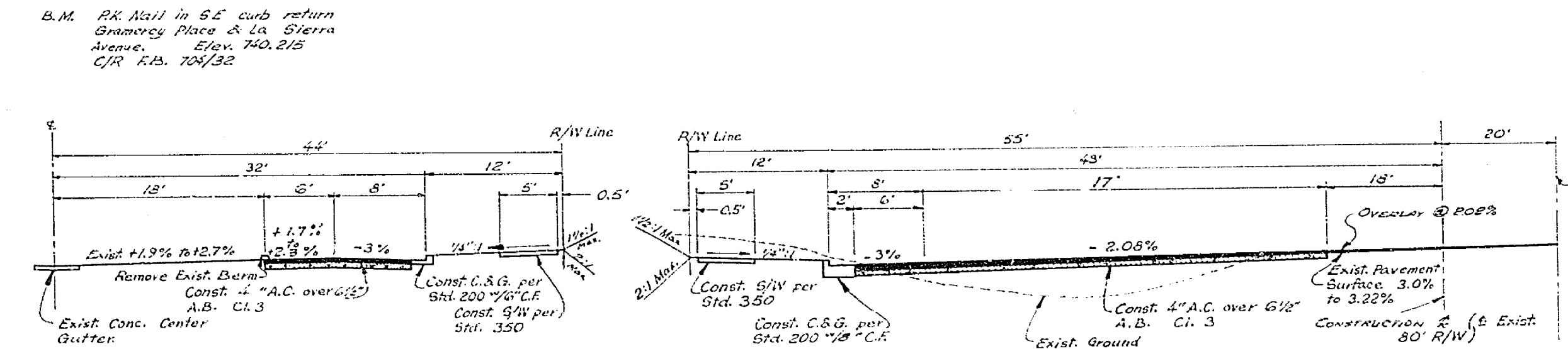
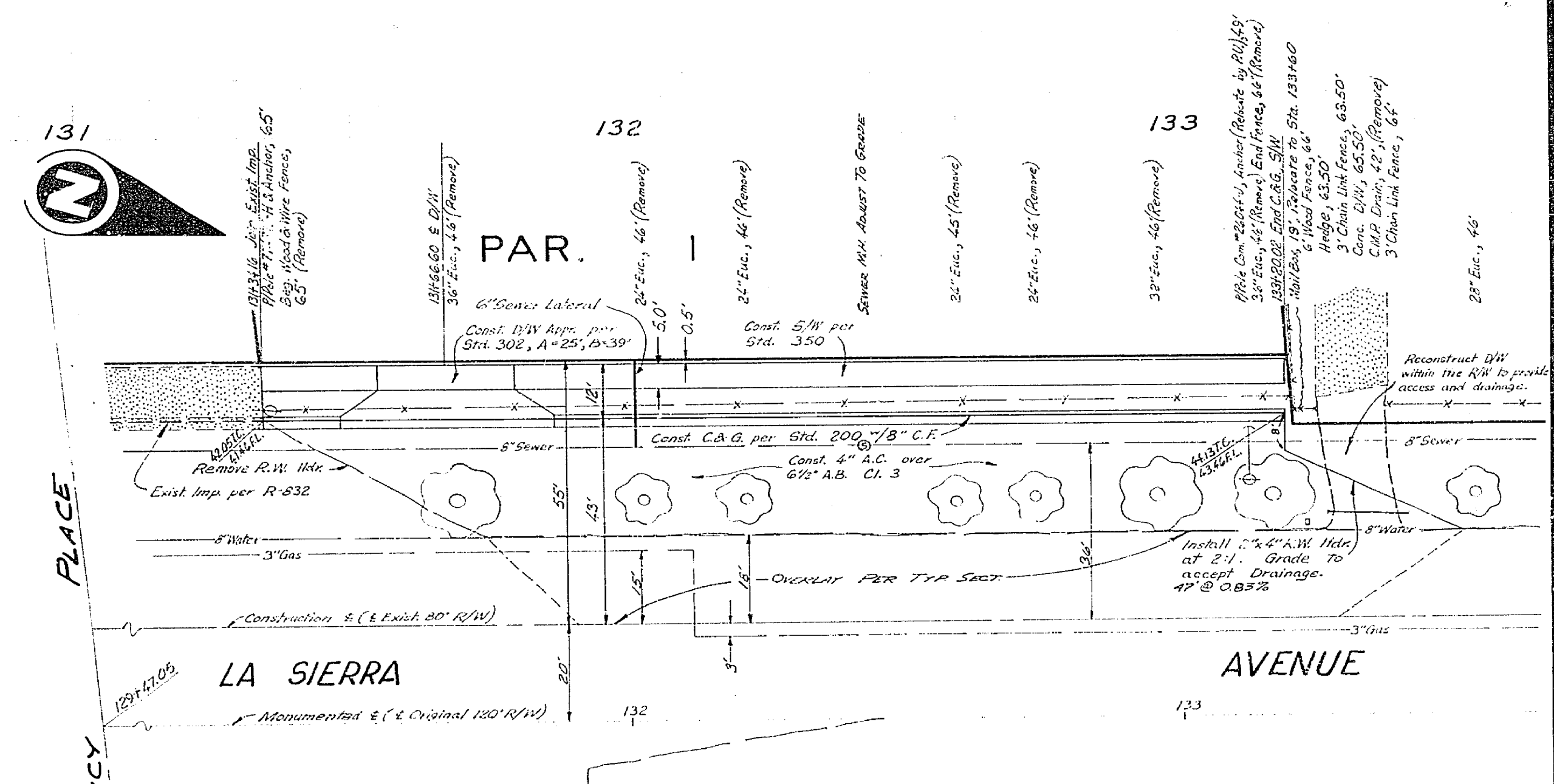
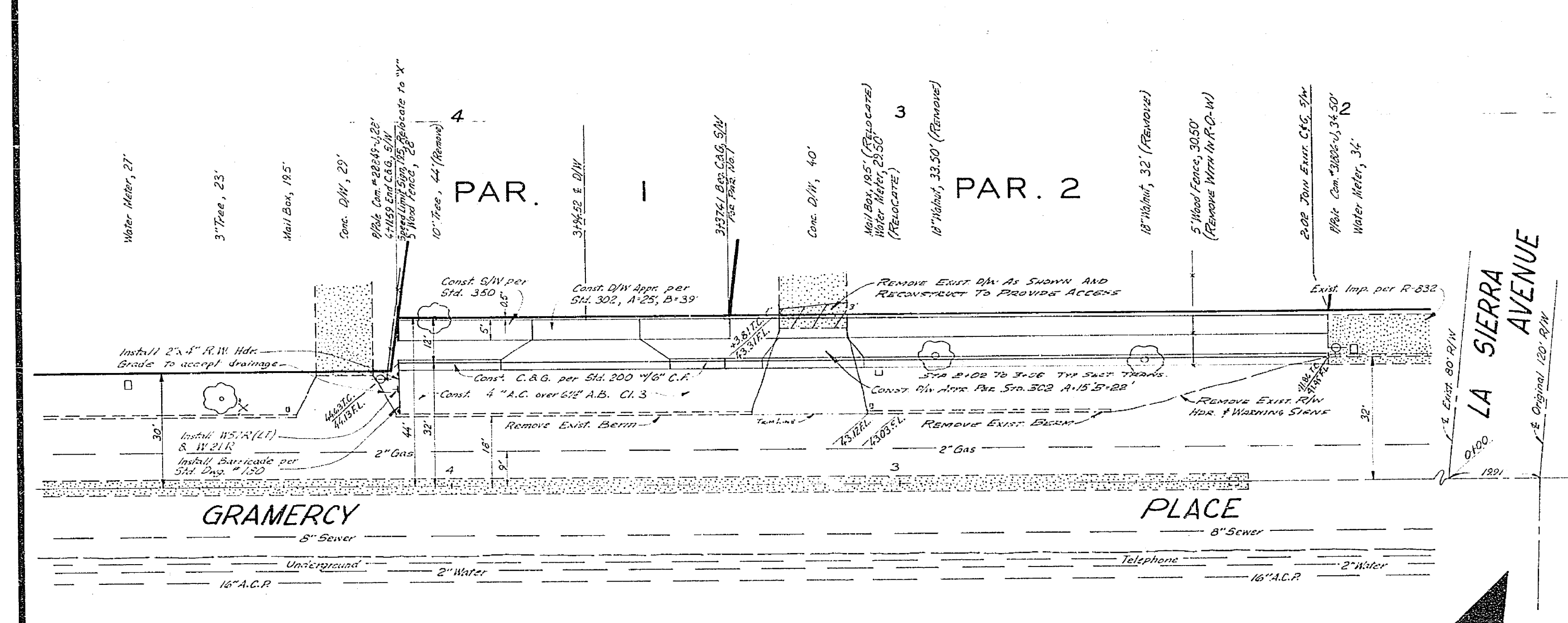
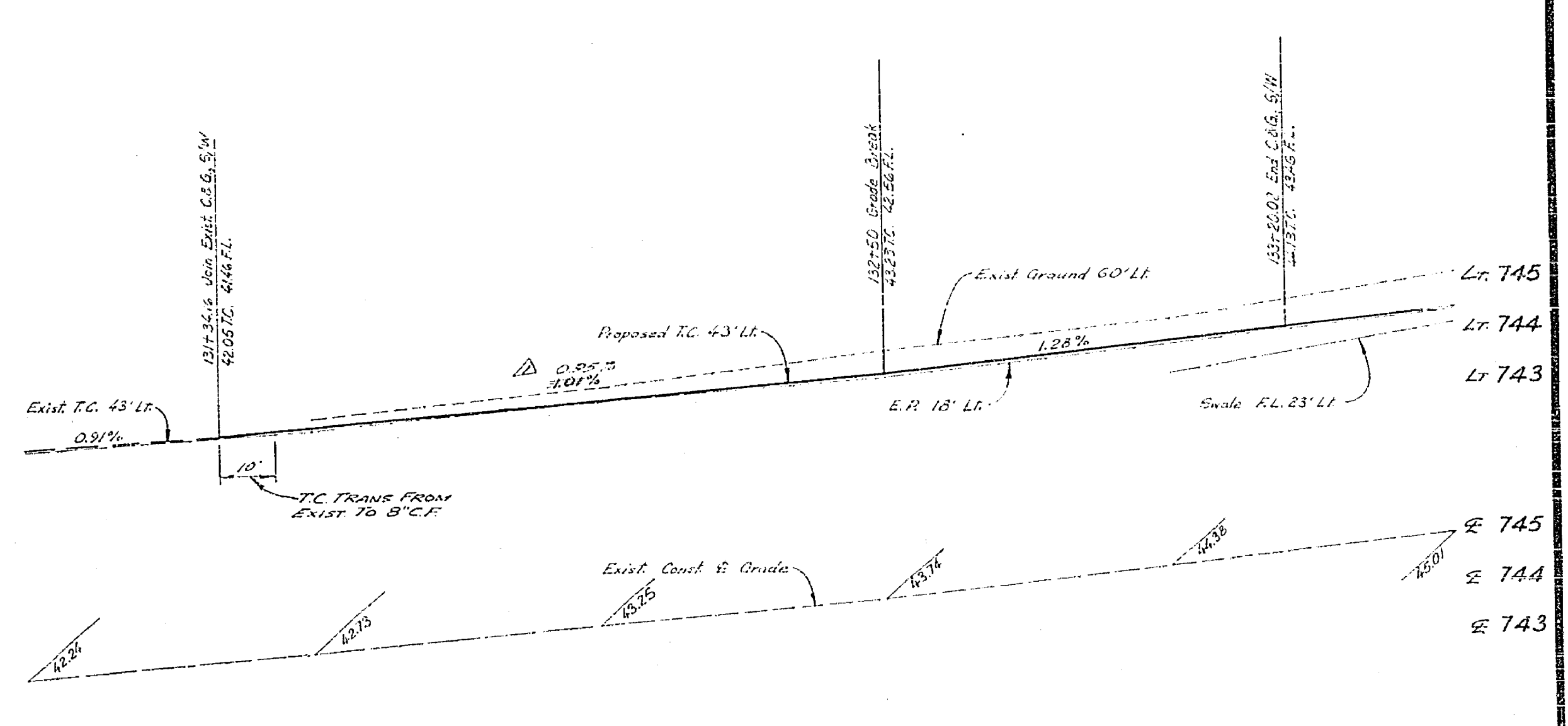


745 Lt
744 Lt
743 Lt

743 E
742 E
741 E



TYPICAL SECTION
GRAMERCY PLACE
STA. 3100.00 TO STA. 411.76
Scale: 1" = 10'

TYPICAL SECTION
LA SIERRA AVENUE
STA. 1317.34 TO STA. 1337.50
Scale: 1" = 10'

J. F. DAVIDSON ASSOCIATES
CIVIL ENGINEERS - SURVEYORS - PLANNERS
RIVERSIDE, CALIFORNIA
APPROVED BY *[Signature]* DATE 5-6-70
R.E. No. 13694
W.D. 2610 FOR HOUSING RESOURCES, INC. F.B. 1019

NO.	REVISIONS	DATE

CITY OF RIVERSIDE, CALIFORNIA
DEPARTMENT OF PUBLIC WORKS
APPROVED BY *[Signature]* DATE 10/28/70
OFFICE ENGINEER
TRAFFIC DIVISION
ASSISTANT CITY ENG.

STREET PLAN & PROFILE
LA SIERRA AVENUE
W. SIDE 187' TO 375' N. BY GRAMERCY PL.
GRAMERCY PLACE
N. SIDE 320' TO 425' W. BY LA SIERRA AVE.
C-20-678
HORIZ. SCALE: 1" = 20' VERT. SCALE: 1" = 2'

PROJECT NO. **R-1437**
SHEET **1** OF **1**
FILE NO. **3387**

- GENERAL NOTES**
- It shall be the responsibility of the Contractor to clear the right of way in accordance with the provisions of law as it affects such utility including irrigation lines and appurtenances and at no cost to the City.
 - Construction shall be in accordance with the City of Riverside, Department of Public Works, Specifications No. 461 and Standard Drawings.
 - Prime coat, seal coat, and paint binder are required.
 - Trim edge of existing paving where new paving joins existing pavement to a smooth, straight line. Construct match up paving as shown and overlay paving as directed in the field to produce a smooth crown section. Engineer
 - For relocation of any existing City domestic or irrigation water facility, or electric power utility facility to be done by City forces, contact Charles Hare, Water Commercial Engineer at 787-7442. Schedule about 2 weeks to process a work order before relocation work begins.
 - Sewer lateral to be located in the field at the time of construction at the direction of the Owner.