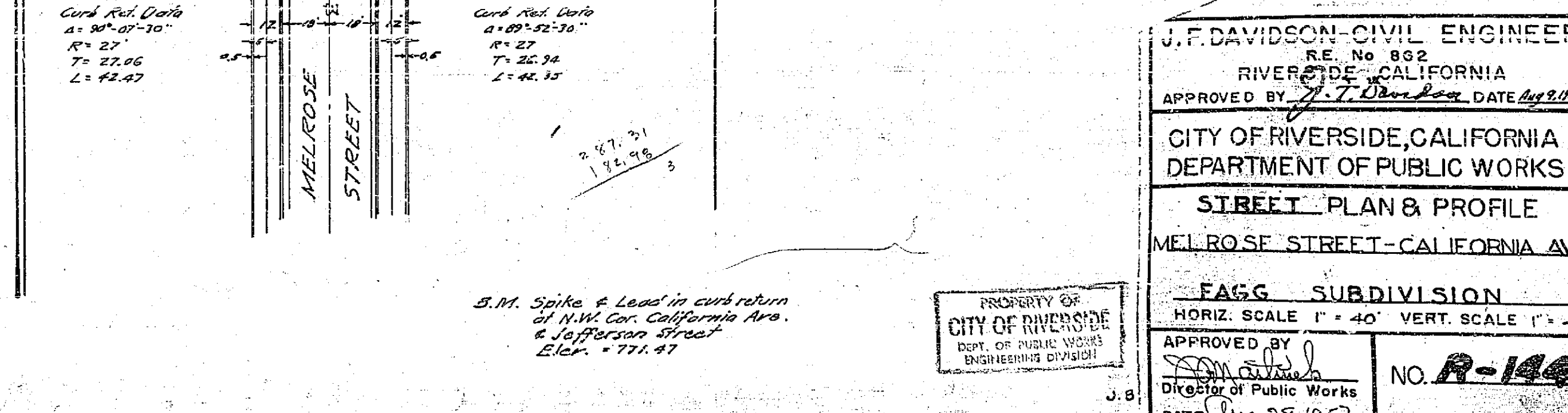
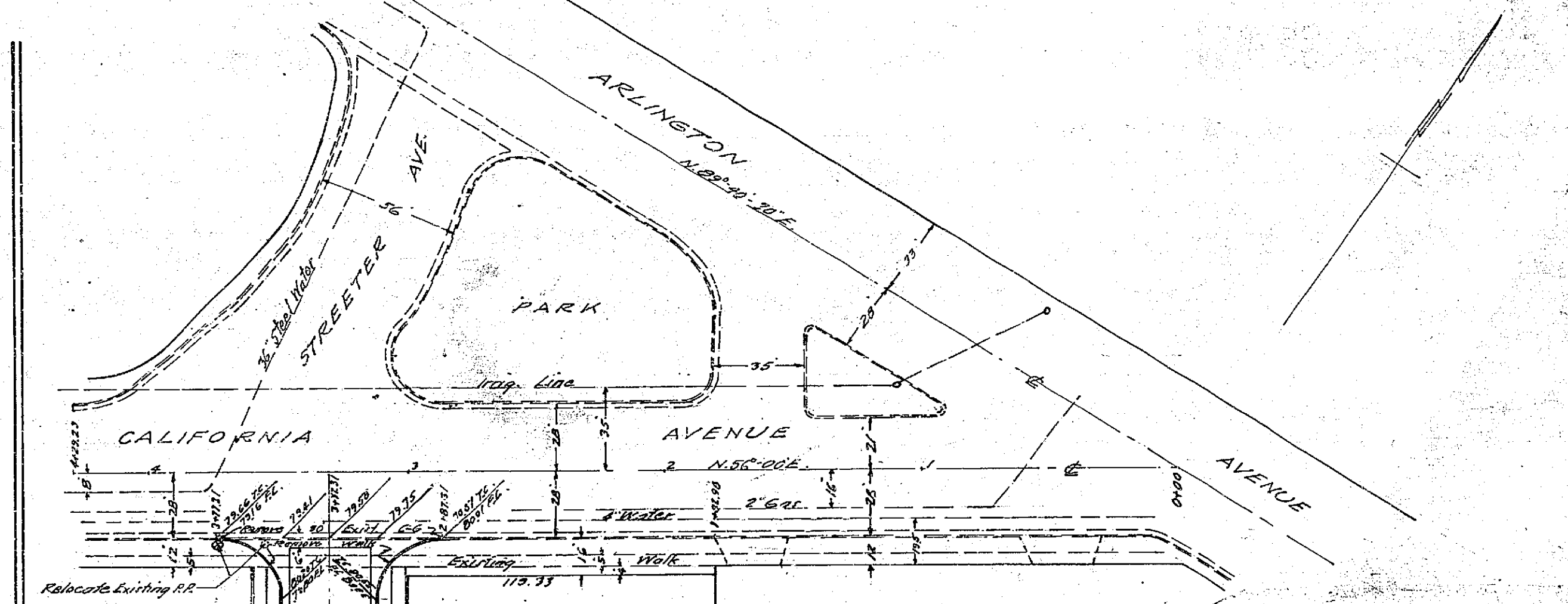
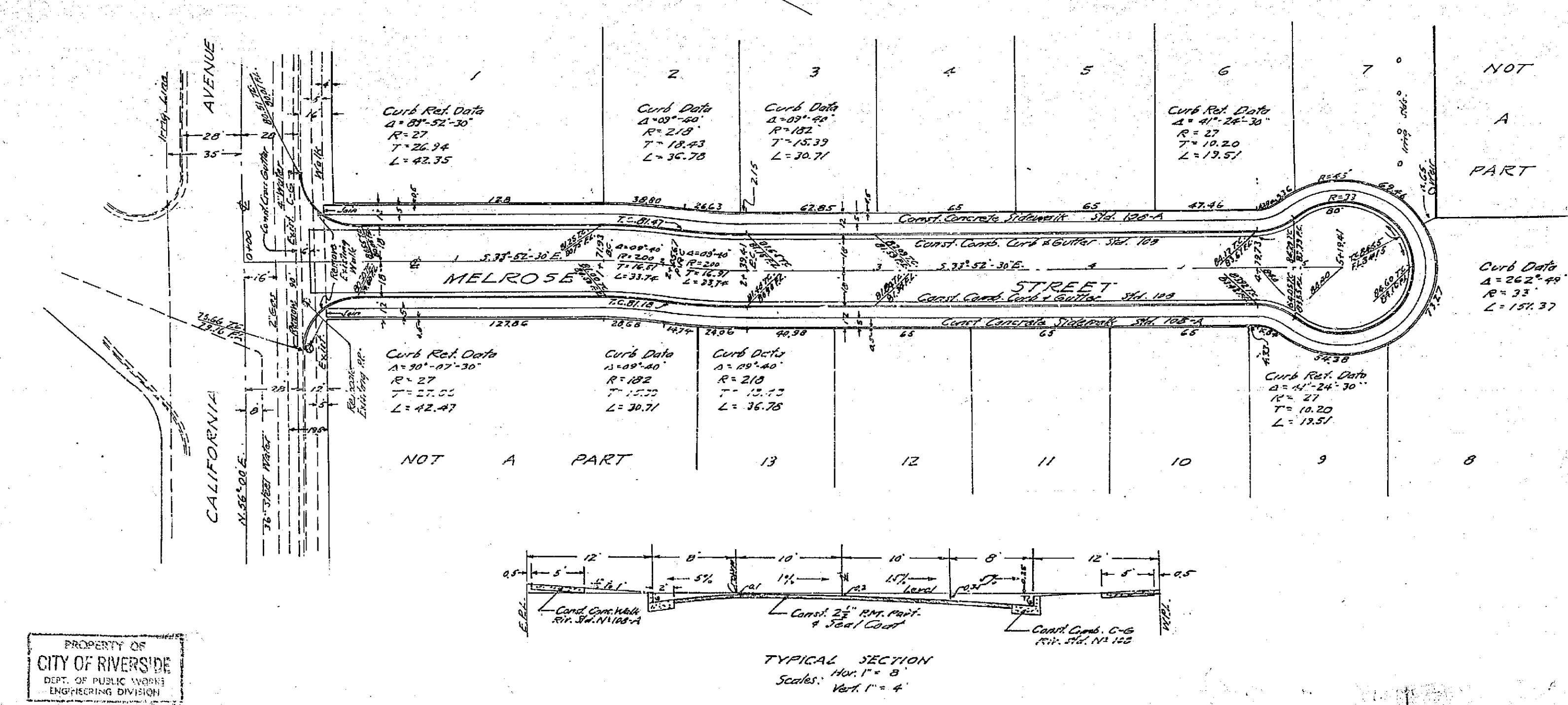
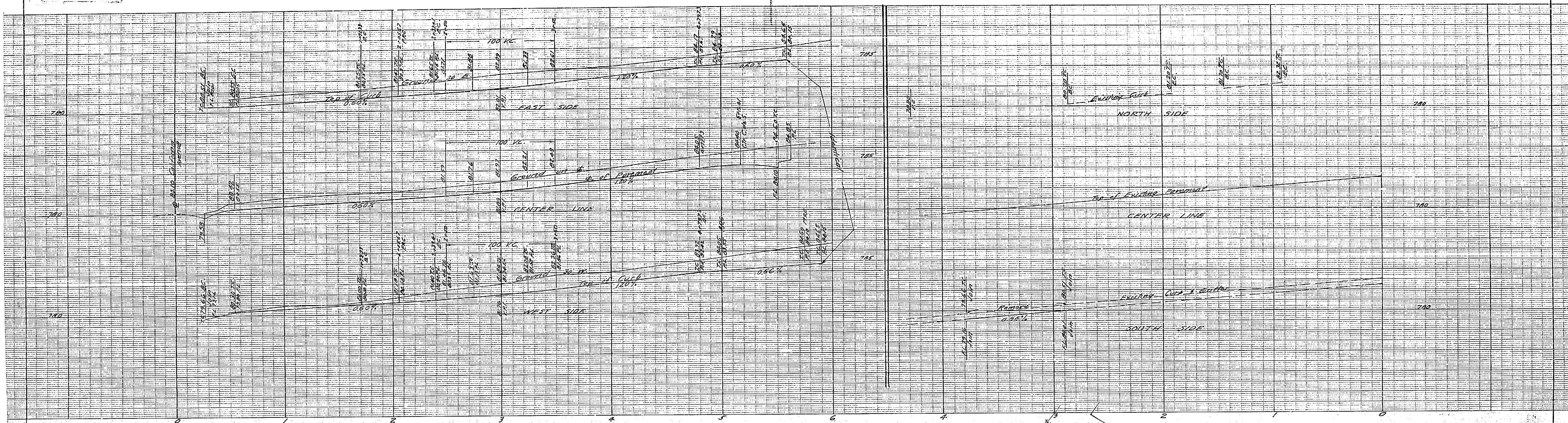


PROPERTY OF
CITY OF RIVERSIDE
DEPT. OF PUBLIC WORKS
ENGINEERING DIVISION

PROPERTY OF
CITY OF RIVERSIDE
DEPT. OF PUBLIC WORKS
ENGINEERING DIVISION



PROPERTY OF
CITY OF RIVERSIDE
DEPT. OF PUBLIC WORKS
ENGINEERING DIVISION

PROPERTY OF
CITY OF RIVERSIDE
DEPT. OF PUBLIC WORKS
ENGINEERING DIVISION

J.F. DAVIDSON - CIVIL ENGINEER
RE. No. 892
RIVERSIDE, CALIFORNIA
APPROVED BY: *J.F. Davidson* DATE Aug 9, 1917
CITY OF RIVERSIDE, CALIFORNIA
DEPARTMENT OF PUBLIC WORKS
STREET PLAN & PROFILE
MELROSE STREET - CALIFORNIA AVE
FAGG SUBDIVISION
HORIZ. SCALE 1" = 40' VERT. SCALE 1" = 4'
APPROVED BY: *J.F. Davidson*
Director of Public Works
DATE Aug 28, 1917 SHEET 1 OF 1

S.M. Spike & Lead in curb return
at N.W. Cor. California Ave.
& Jefferson Street
Elev. = 771.47