

BENCH MARK
 The staff in this return N.W. Corner Magnolia & Tyler St. ELEV 740.279 C.M. 10. 655/63

- GENERAL NOTES**
- (1) It shall be the responsibility of the contractor to clear the right of way in accordance with the provisions of the act affecting such work, including irrigation lines and appurtenances, and all other utilities.
 - (2) Construction shall be in accordance with the City of Riverside, Department of Public Works, Specifications No. 401 and Standard Details.
 - (3) Prime coat, seal coat, and paint binder are required.
 - (4) The contractor shall arrange for a soil test to be made by a registered geotechnical engineer prior to construction. The soil bearing shall be determined by the test results and soil bearing shall be determined by the test results.
 - (5) Engineer estimates the overlay to be approximately 15 tons.

Approval of this plan is tentative only. The plan may have to be revised to coordinate with the Riverside County Flood Control Project in Magnolia Ave. Before commencing any construction prior approval must be obtained from the Public Works Department.

QUANTITY ESTIMATE

Curb & Gutter Standard No. 200 (6" x 6")	372	L.F.
Subbase Standard No. 200	1,950	S.F.
A.C. Paving	3,985	S.F.
Driveway Approach Standard 202	2	S.F.
Concrete Removal	839	S.F.
A.C. Berm Standard No. 250	220	S.F.
A.C. Berm Removal	60	L.F.
Curb & Gutter Removal	308	L.F.
A.C. Overlay	135	L.F.
W.Co.R	751	TON
	6	CU

-CAUTION-
PACIFIC TELEPHONE
CABLES UNDERGROUND
BEFORE EXCAVATING
CALL COLLECT:

Orange County	714-633-0811	714-547-6600
Riverside County	714-684-0071	714-547-6600
San Diego County	714-684-0071	714-547-6600
San Bernardino County	714-684-0071	714-547-6600
Los Angeles County	213-621-3111	24 HOUR SERVICE
Ventura County	714-298-0595	714-232-0027

FOR FREE CABLE LOCATING SERVICE

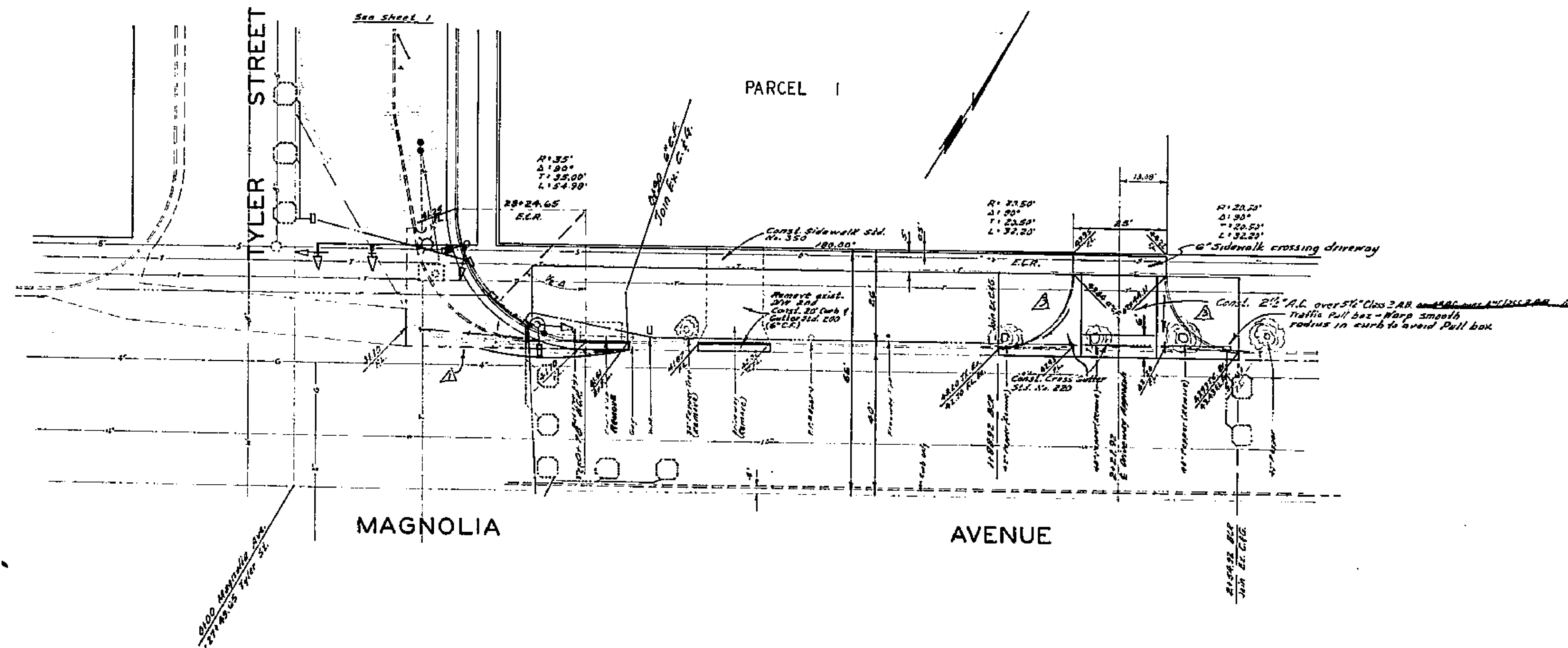
ALBERT A. WEBB ASSOCIATES CIVIL ENGINEERS RIVERSIDE, CALIFORNIA APPROVED BY: <i>[Signature]</i> DATE: 2/21/70 R.E. No. 5875 W.G. 70-101 FOR CONTINENTAL SERVICE CO. 7-8 G.S.		CITY OF RIVERSIDE, CALIFORNIA PUBLIC WORKS DEPARTMENT APPROVED BY: <i>[Signature]</i> DATE: 2/21/70 PRINCIPAL ENGINEER: <i>[Signature]</i> PARK DEPARTMENT: <i>[Signature]</i> TRAFFIC DIVISION: <i>[Signature]</i> CHIEF PUB. WORKS ENGR.		STREET PLAN AND PROFILE TYLER STREET N.E.'LY SIDE, BETWEEN MAGNOLIA AVE. AND HOLE AVE. PARCEL MAP NO. 5 SCALE: 1" = 20' HORIZ., 1" = 4' VERT.	ACCOUNT NO. DRAWING NUMBER R-1446 SHEET 1 OF 2 70-101-A
--	--	--	--	---	--

LT. 740

LT. 740

CL 740

CL 740



BENCH MARK:
 PK nail in curb return NW corner Magnolia & Tyler St. ELEV 742.275 CIP FB. 6/25/69.

-CAUTION-
PACIFIC TELEPHONE
CABLES UNDERGROUND
BEFORE EXCAVATING

CALL COLLECT:
 7:30 A.M. to 5 P.M. After Hours & Holidays

Orange County 714-633-2311 714-537-6609
 Riverside County 714-684-0271 714-547-6609
 Inyo County 714-684-0271 714-547-6609
 San Bernardino County 714-684-0271 714-547-6609
 Los Angeles County 213-621-2111
 Ventura County 213-621-2111
 San Diego County 619-200-0125 714-212-0227

24 HOUR SERVICE
 FOR FREE CABLE LOCATING SERVICE

NOTICE TO CONTRACTOR
 The existence and location of all structures and utilities shown on this plan are based on the records of the City of Riverside. It is the responsibility of the contractor to verify the location and depth of all structures and utilities shown on this plan before excavation.

ALBERT A. WEBB ASSOCIATES
CIVIL ENGINEERS
RIVERSIDE, CALIFORNIA

APPROVED BY: *[Signature]* DATE: 9/2/70
 R.E. No. 5876

W.D. 20-181 FOR CONTINENTAL SERVICE CO. INC. C.S.

CITY OF RIVERSIDE, CALIFORNIA
PUBLIC WORKS DEPARTMENT

DESIGNED BY: *[Signature]* DRAWN BY: *[Signature]* CHECKED BY: *[Signature]*

REVISIONS	DATE	BY
Revised Driveway Approach	8-11-70	[Signature]
Revised Street Section	8-11-70	[Signature]
Revised Curb Return Grade and	8-11-70	[Signature]
Final Plan	8-11-70	[Signature]

APPROVED BY: *[Signature]* BY: *[Signature]* DATE: 9/2/70
 CHECKED BY: *[Signature]* DATE: 9/2/70

STREET PLAN AND PROFILE
MAGNOLIA AVENUE
 N'LY SIDE, E.L.Y. OF TYLER STREET
 PARCEL MAP NO. 5

SCALE: 1" = 20' HORIZ., 1" = 4' VERT.

ACCOUNT No. *[Blank]*
 DRAWING NUMBER **R-1446**
 SHEET **2** OF **2**
70-101-A