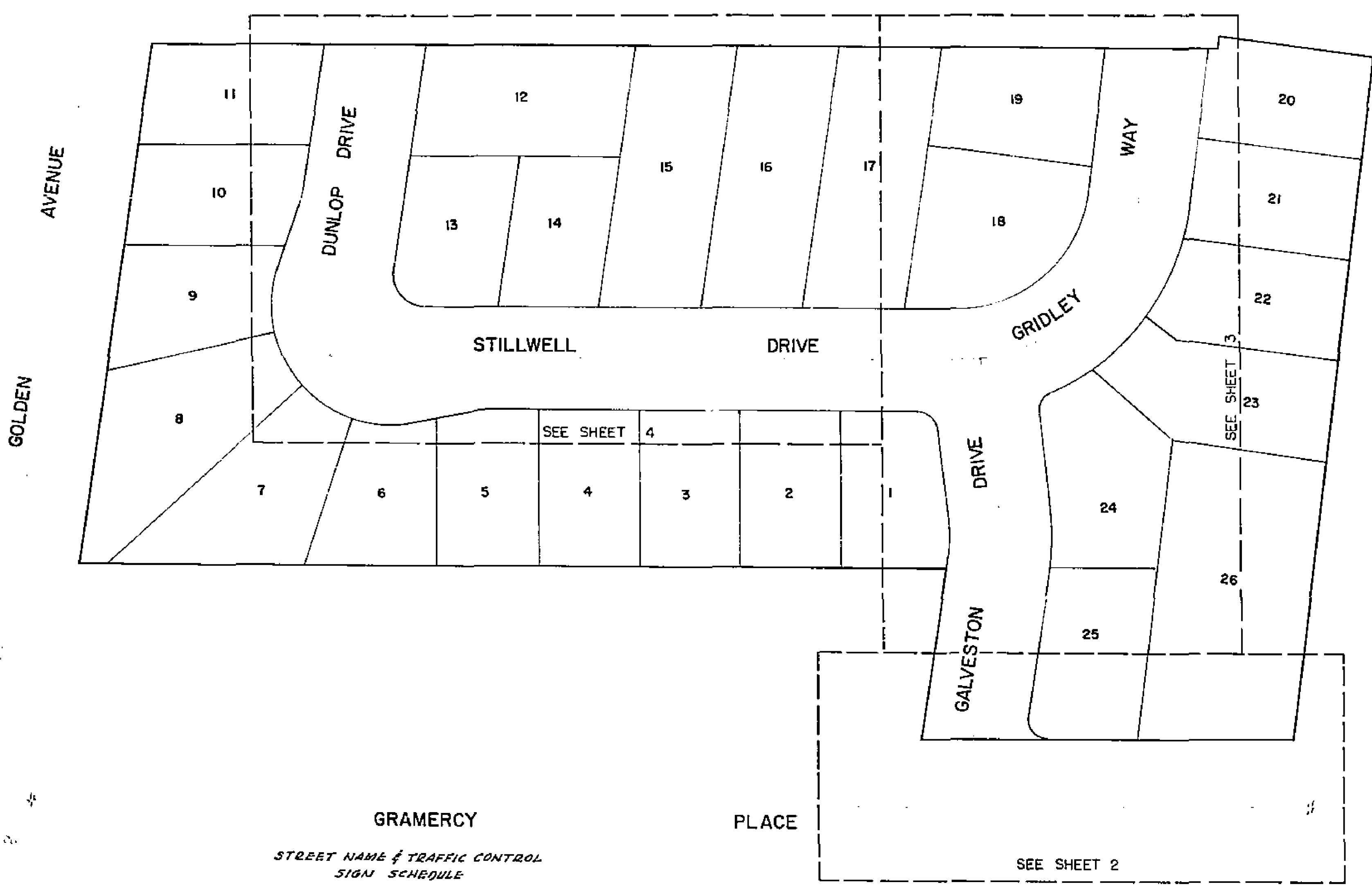
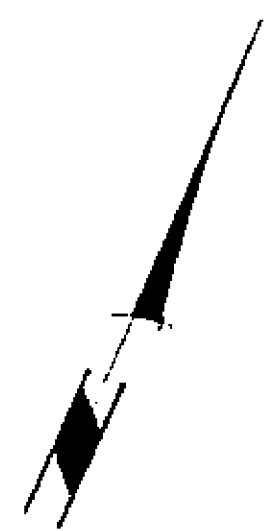
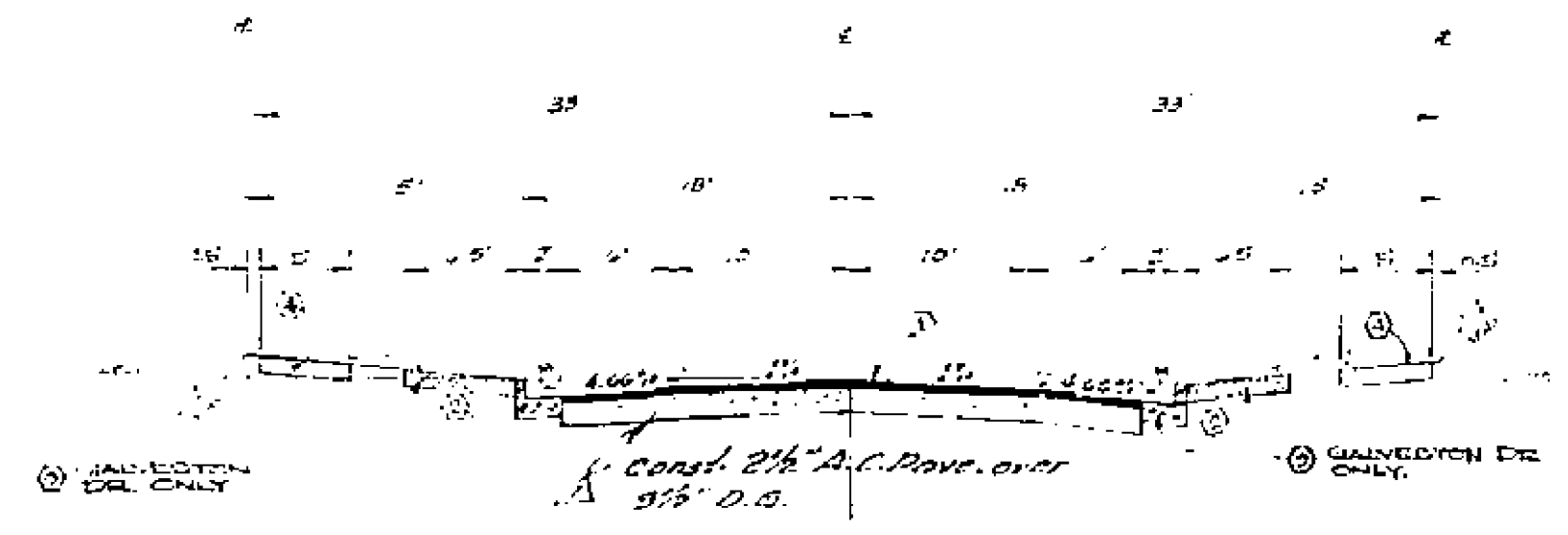


CAMPBELL AVENUE

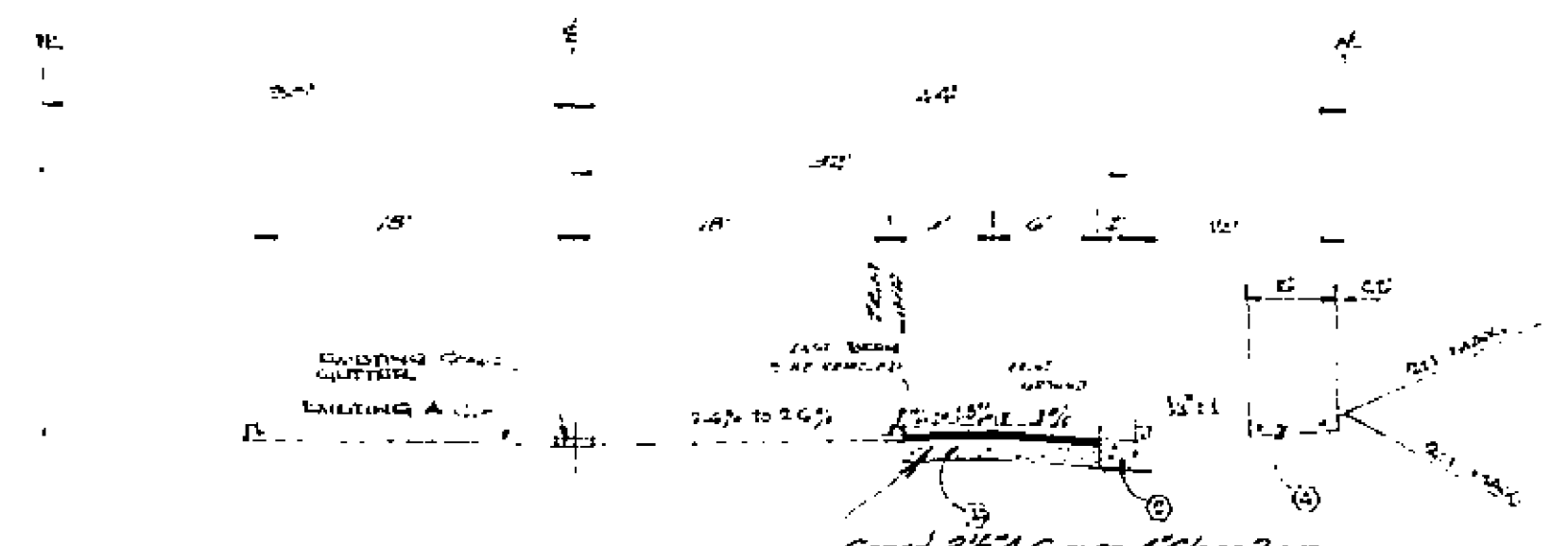


STREET NAME & TRAFFIC CONTROL SIGN SCHEDULE

(A)	DUNLOP DR.	5300
	STILLWELL DR.	11200
(B)	STILLWELL DR.	11200
	GRIDLEY WAY	5300
(C)	GALVESTON DR.	5300
(D)	GALVESTON DR.	5300
	GRAMERCY PL.	11200
(E)	2 1/2' x 3' 6" (STOP SIGN)	
(F)	11 3/4" x 2 1/2" (PART 4 THROUGH STREET)	



TYPICAL SECTION
 GALVESTON DRIVE
 GRIDLEY WAY
 STILLWELL DRIVE
 DUNLOP DRIVE
 T.I. = 5



TYPICAL SECTION
 GRAMERCY PLACE
 T.I. = 7

GENERAL NOTES:

- TRAFFIC CONTROL SIGNS MUST BE INSTALLED PRIOR TO CLOSING OFF STREET TO TRAFFIC.
- It shall be the responsibility of the contractor to clear the right of way in accordance with the provisions of the law as it affects each utility, including irrigation lines and appurtenances, and at no cost to the city.
- Construction shall be in accordance with standard specifications for Public Works Construction, 1972 edition and City of Riverside Standard Drawings.
- ALL MEASUREMENTS SHALL BE OBTAINED IN THE FIELD BY THE ENGINEER.
- The subdivider shall arrange for a soil test to be made by a Soils Engineer after the sheets have been prepared to rough grade. Copy of report and test results shall be examined by City of Riverside Design Standards & Test Procedures.

CONSTRUCTION LEGEND

- 0 1/2" A.C. PAVEMENT OVER "D.G. PER STD. SPECS" } SEE TYPICAL SECTIONS
- 1" A.C. PAVEMENT OVER "D.G. PER STANDARD SPECIFICATIONS" }
- 1 1/2" D.G. OR 1" A.C. OVER 1 1/2" D.G. (CL. & A.S. PER STATE SPECS.)
- 6" CONC. CURB & GUTTER 6" CONC. FACE
- 6" CONC. CURB & GUTTER
- 15" CONC. SIDEWALK
- 12" CONC. OUTLET STRUCTURE W/4"
- 12" CONC. BARRICADE 66" WIDE
- 2" x 4" REDWOOD HEADER
- 6" x 6" BERM
- 6" CONC. SIDEWALK
- 2" x 3" x 10" TRIANGULAR PIPE PER STD. 15-11

ALBERT A. WEBB ASSOCIATES CIVIL ENGINEERS RIVERSIDE, CALIFORNIA APPROVED BY <i>D. N. Webb</i> DATE 3/8/71 R.E. No. 2876	CITY OF RIVERSIDE, CALIFORNIA DEPARTMENT OF PUBLIC WORKS APPROVED BY _____ DATE _____ DIRECTOR OF PUBLIC WORKS	STREET PLAN & PROFILE TRACT NO. 4107 INDEX MAP	PROJECT NO. R-1485 SHEET 1 OF 4
		W.D. 70-305 FOR JAWSON, MARRIOTT & CO. P.B. 1027 DESIGNED BY S.E.G. DRAWN BY R.M. CHECKED BY E.P.L.	REVISIONS 1. Part Section Added 11/11/70 2. 11/11/70

750 Lt.

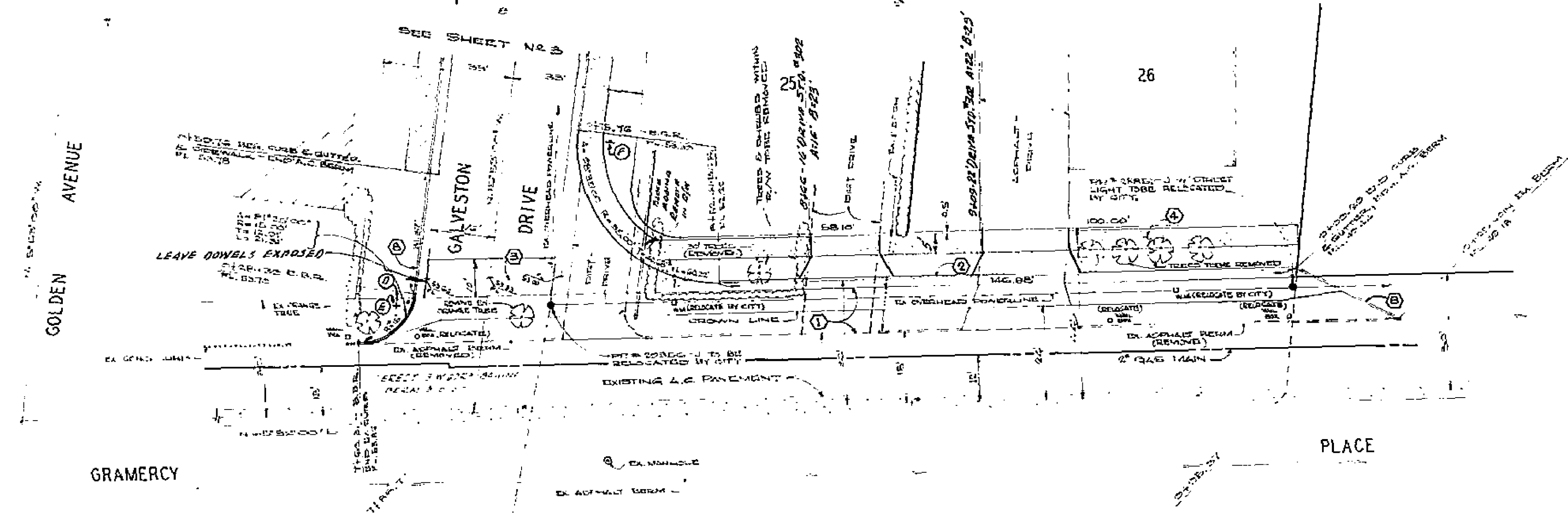
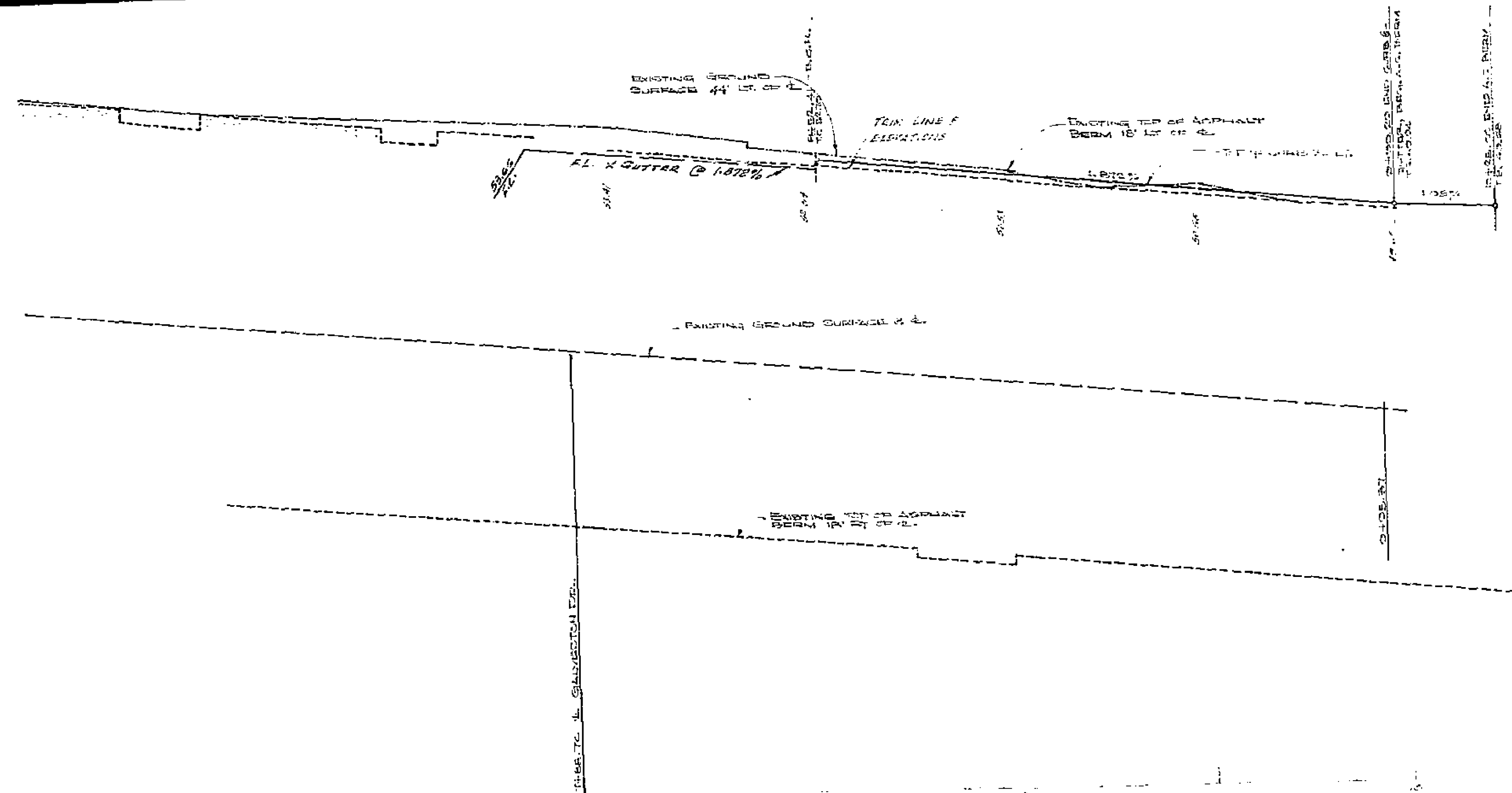
750 ±

750 Rt.

750 Lt.

750 ±

750 Rt.

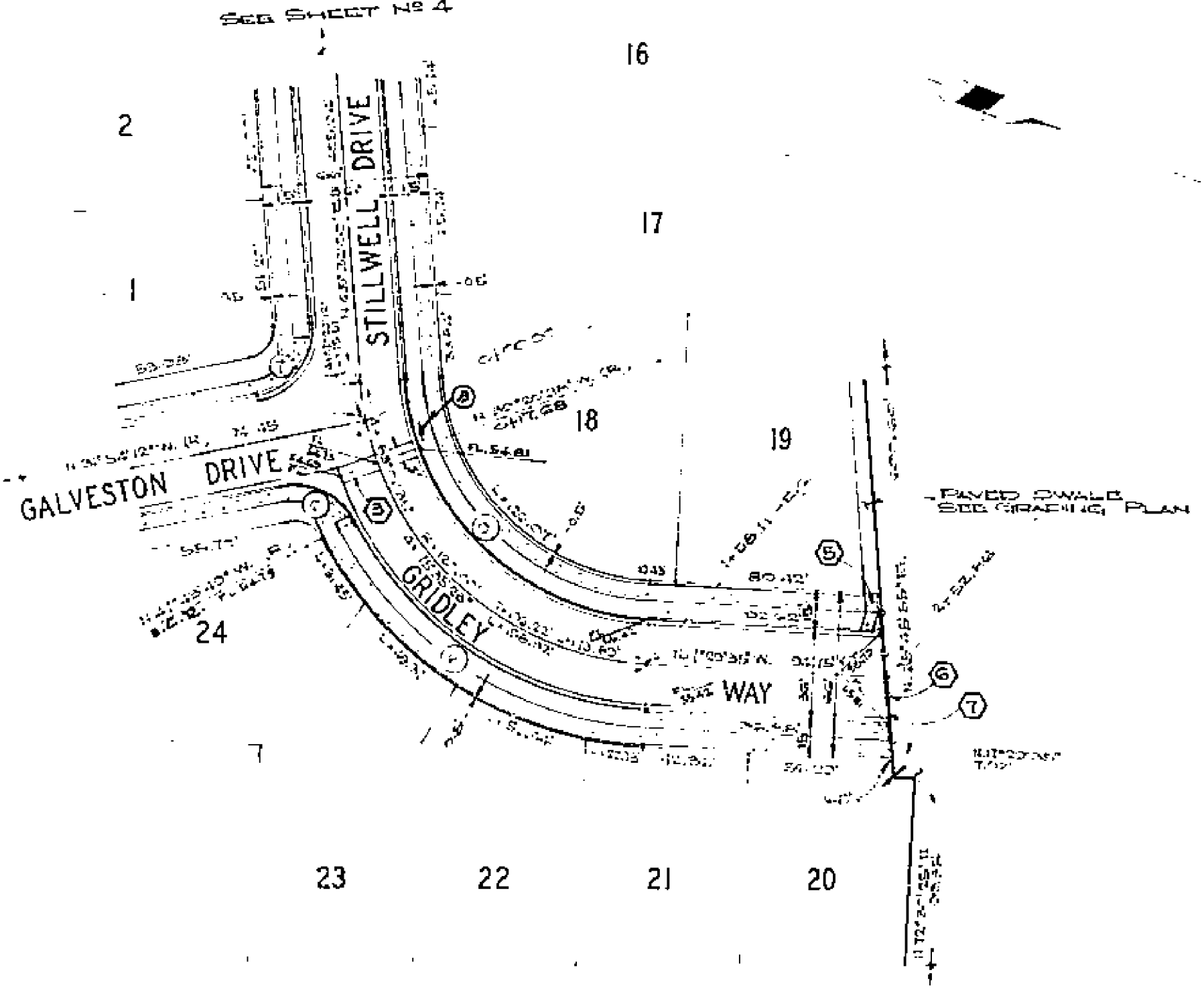
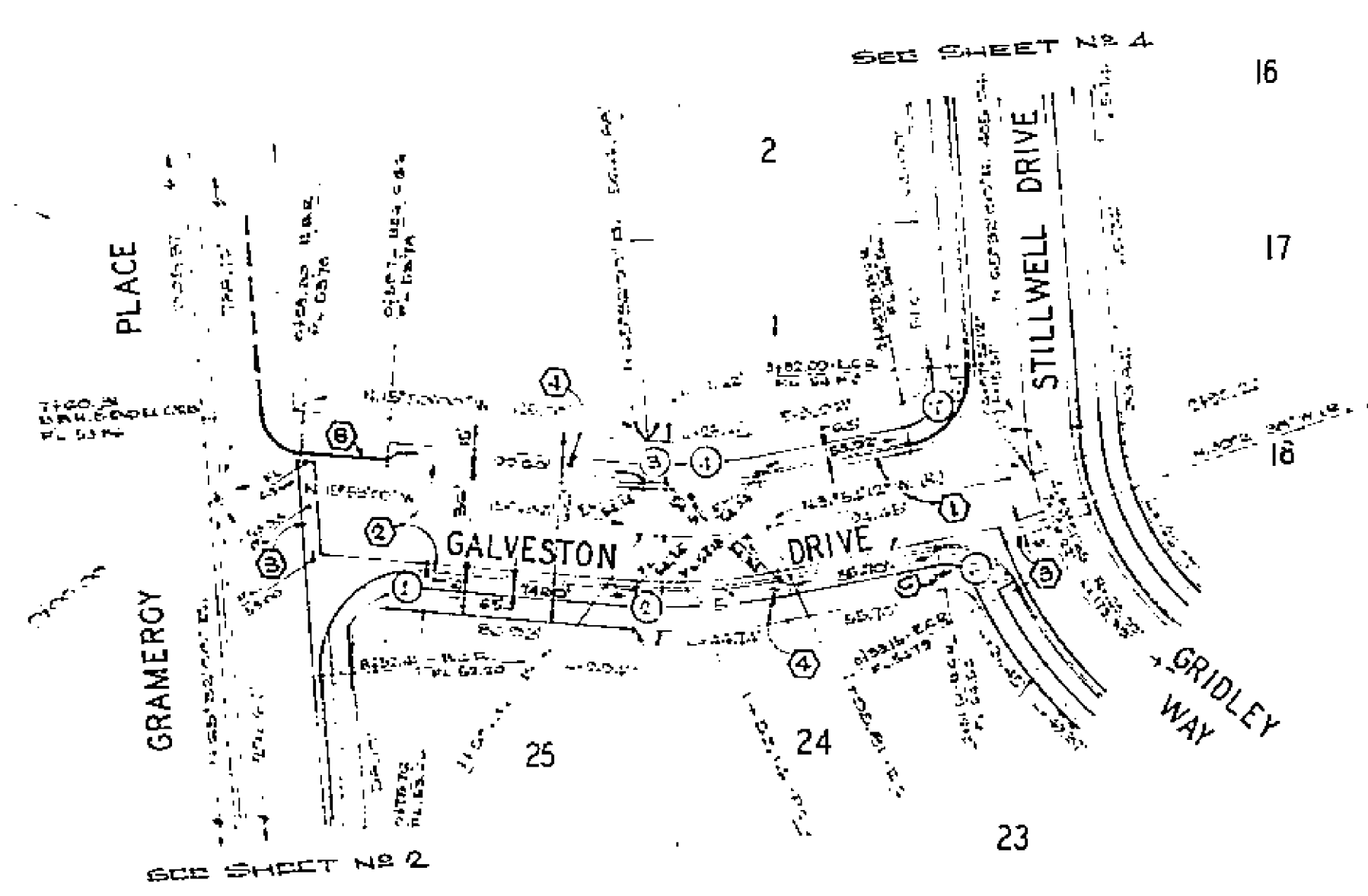
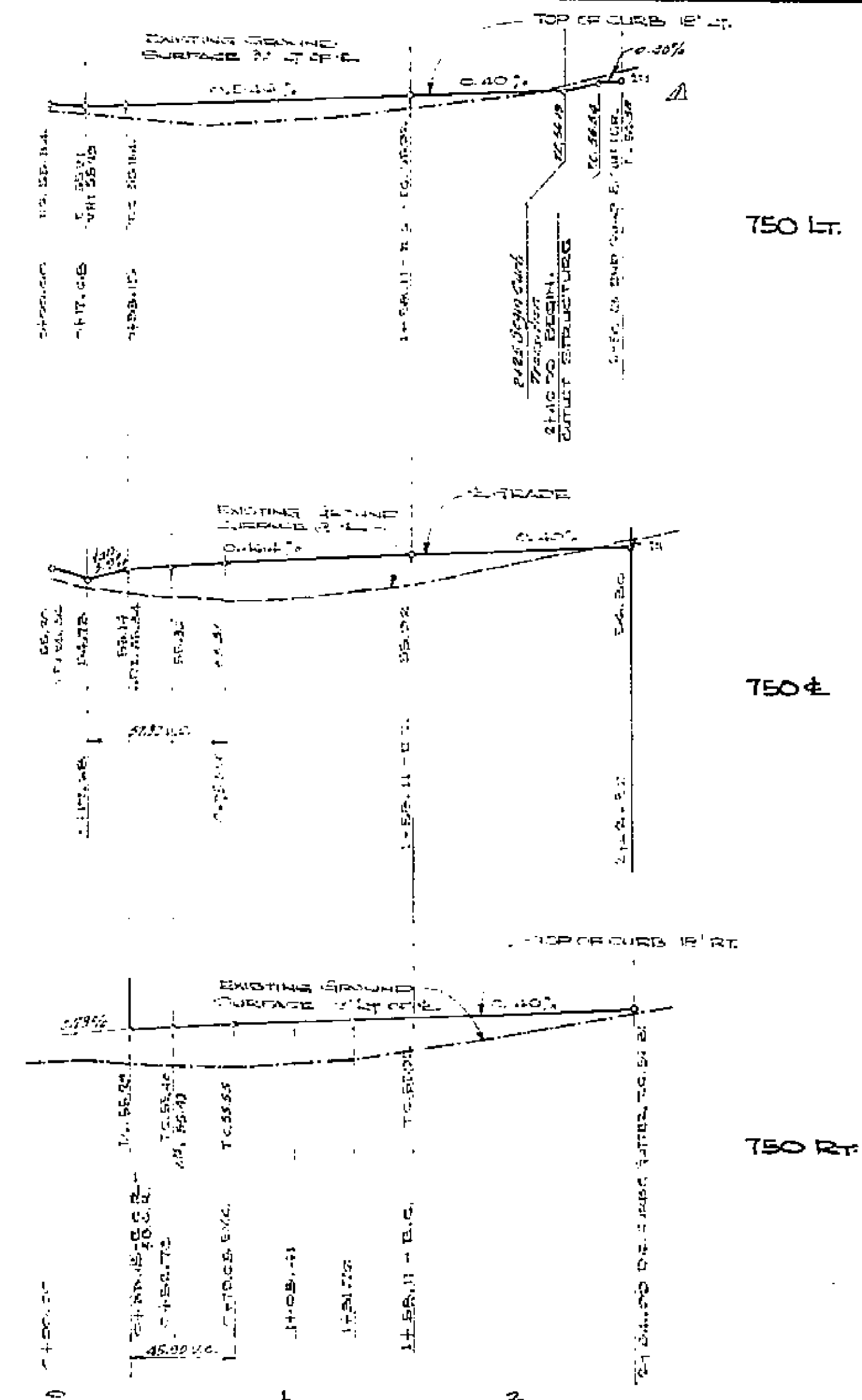
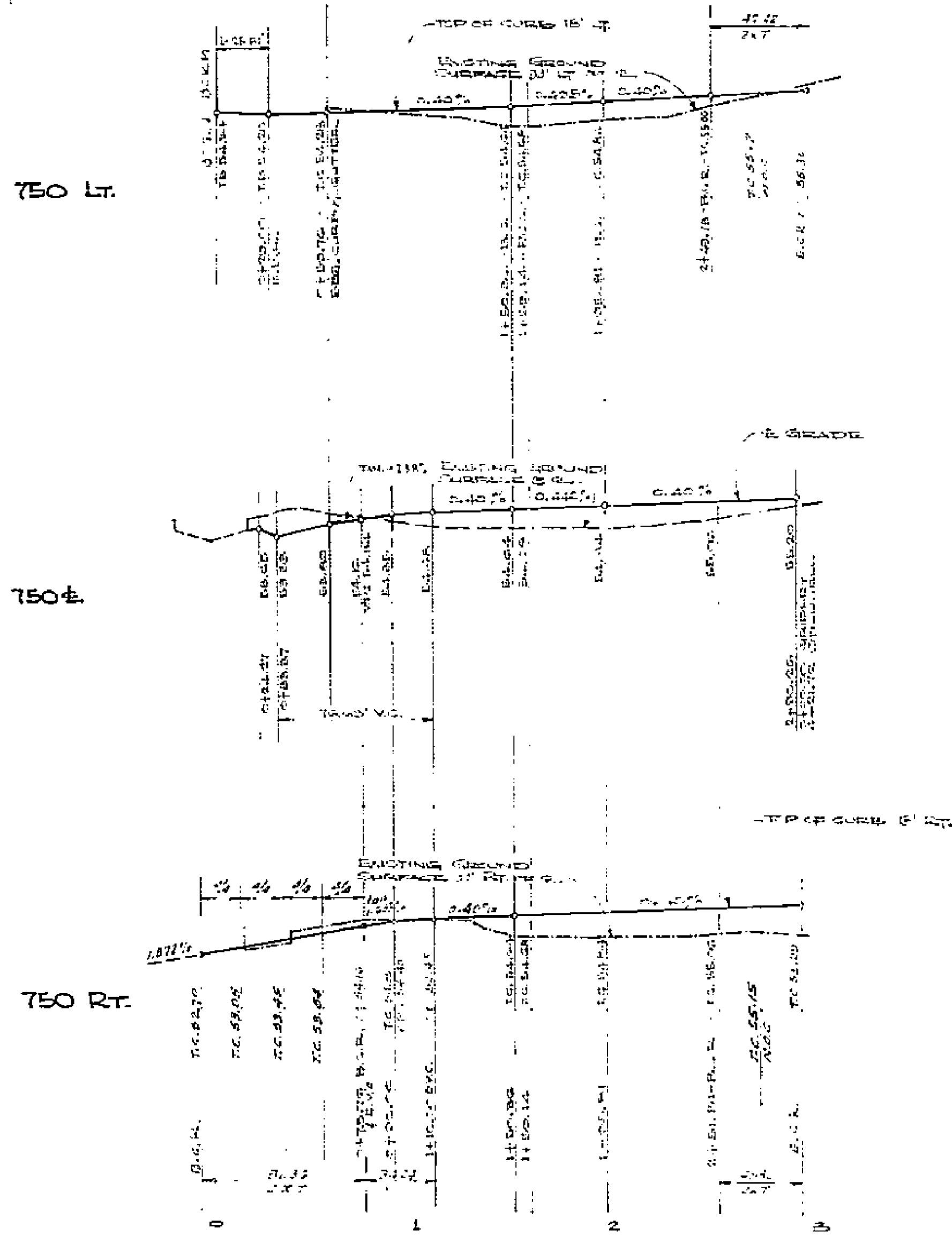


BENCH MARK
 19. NAILED IRON CURB SUPPORT OF UTILITY
 IN GRAMERCY IN FRONT OF HOUSE NO. 1215
 ELEVATION 753.30, CITY RE 125, 22.

GRAMERCY

PLACE

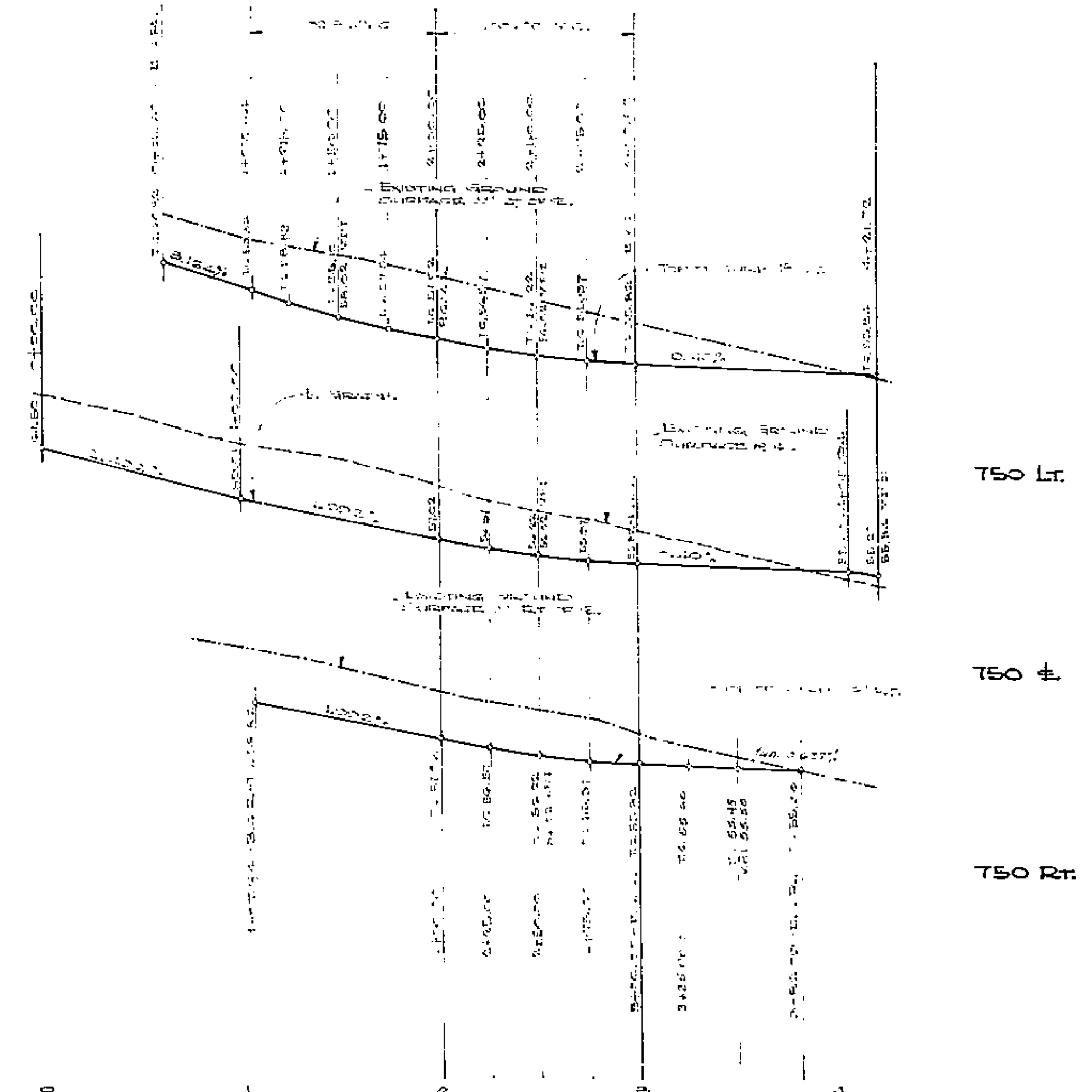
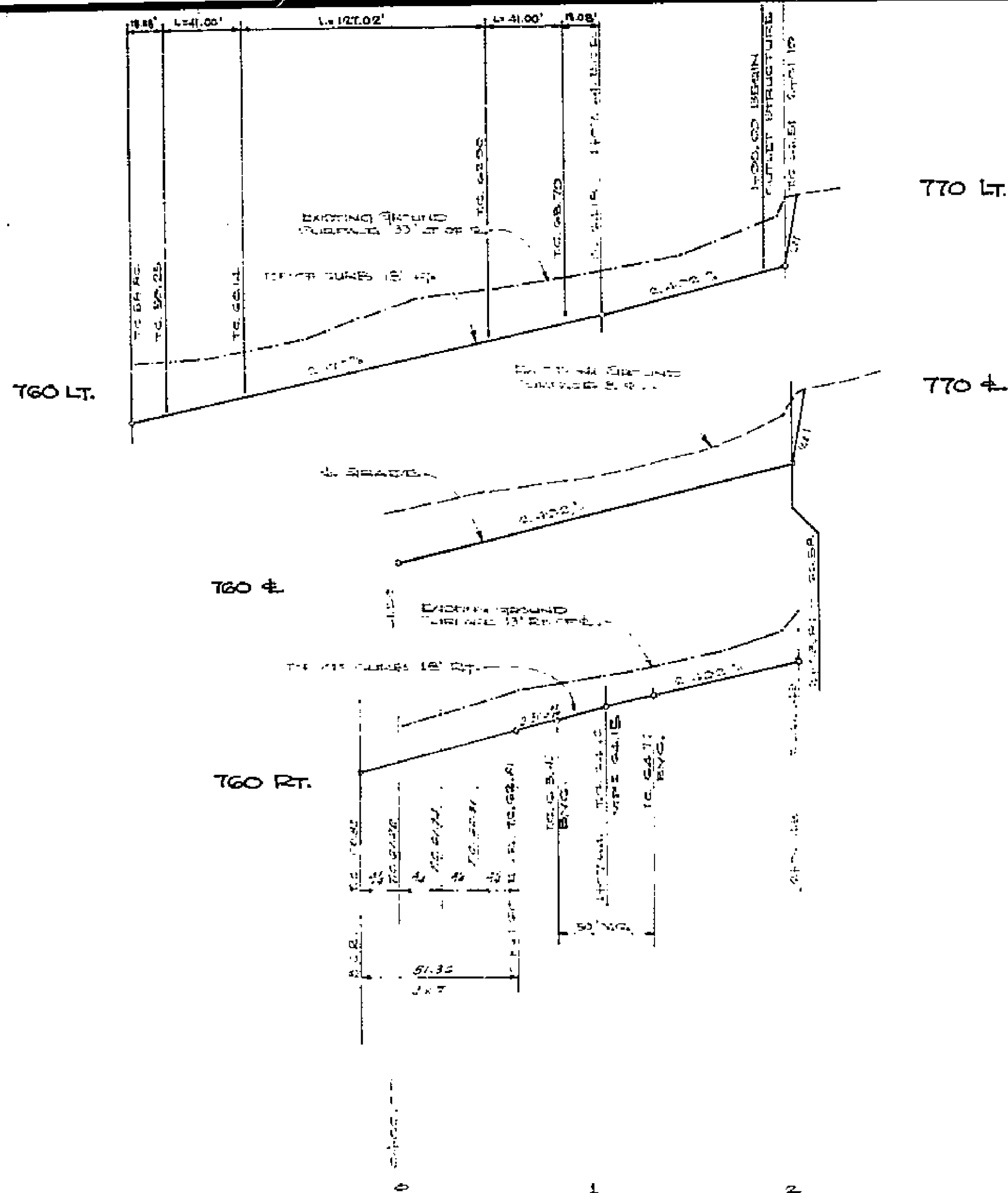
<p>ALBERT A. WEBB ASSOCIATES CIVIL ENGINEERS RIVERSIDE, CALIFORNIA</p>			<p>CITY OF RIVERSIDE, CALIFORNIA PUBLIC WORKS DEPARTMENT</p>			<p>STREET PLAN & PROFILE</p>			ACCOUNT NO.
<p>APPROVED BY: <u>R. H. Webb</u> DATE <u>3/8/51</u> R.E. No. <u>2878</u></p>			<p>APPROVED BY: _____ DATE _____ DIRECTOR OF PUBLIC WORKS</p>			<p>TRACI NO. 4107 GRAMERCY PLACE NORTH SIDE 700' x 1000' x 2 1/2' OF GOLDEN AVENUE</p>			DRAWING NUMBER R-1485
<p>DESIGNED BY: S.E.S. DRAWN BY: M.P. CHECKED BY: A.C.</p>			<p>REVISIONS</p>			<p>SCALED: HORIZ. 1" = 40'; VERT. 1" = 4'</p>			SHEET 2 OF 4
<p>W.O. 70-305 FOR JOHNSON-MYER-COOUGH P.B. 10/52</p>			<p>DATE</p>			<p>TO-305A</p>			



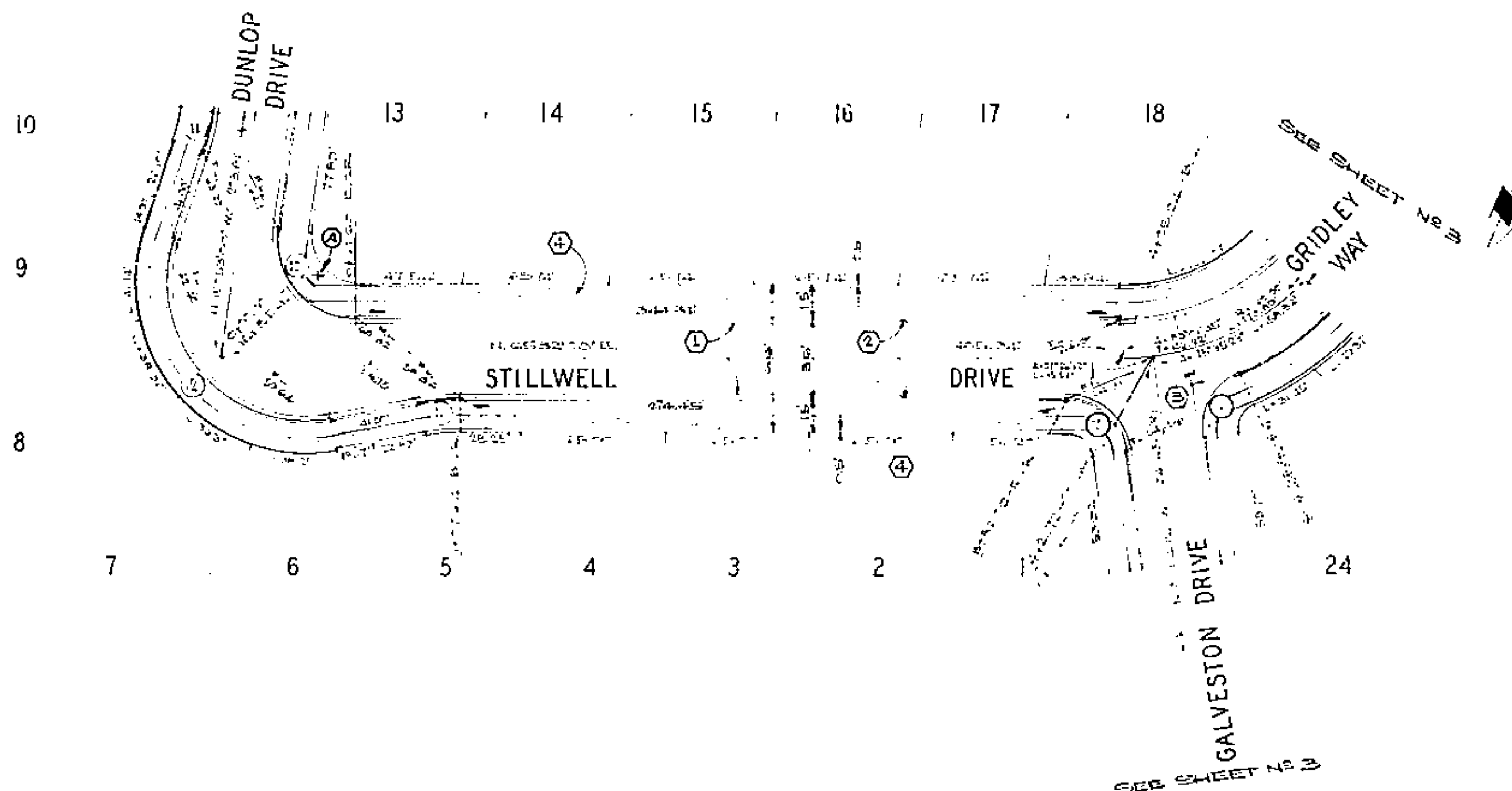
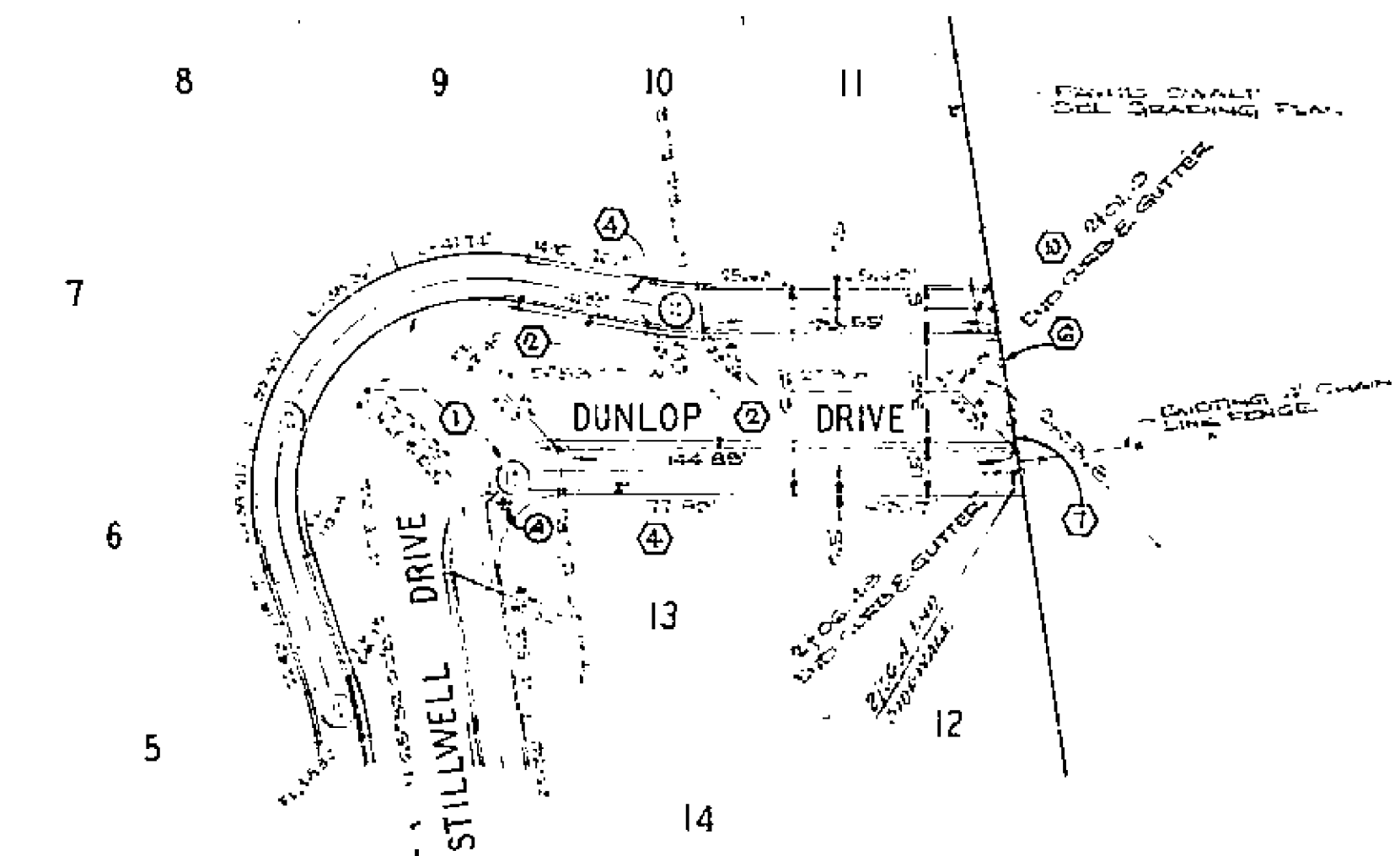
BENCH MARK
 BK MARK IN THE CURB AND END OF ROAD IN
 TR. 407 IN FRONT OF HOUSE NO. 1100
 ELEVATION 750.00, CITY FB. 705/22.

CURB DATA				
ST.	A	B	C	D
1	25.00'	25.00'	42.42'	42.42'
2	25.00'	25.00'	42.42'	42.42'
3	25.00'	25.00'	42.42'	42.42'
4	25.00'	25.00'	42.42'	42.42'
5	25.00'	25.00'	42.42'	42.42'
6	25.00'	25.00'	42.42'	42.42'
7	25.00'	25.00'	42.42'	42.42'
8	25.00'	25.00'	42.42'	42.42'
9	25.00'	25.00'	42.42'	42.42'

ALBERT A. WEBB ASSOCIATES CIVIL ENGINEERS RIVERSIDE, CALIFORNIA APPROVED BY <i>[Signature]</i> DATE 3/9/71 R.E. No. 2872		CITY OF RIVERSIDE, CALIFORNIA PUBLIC WORKS DEPARTMENT APPROVED BY <i>[Signature]</i> DATE 3/9/71 TRAFFIC DIVISION CHIEF PUBLIC WORKS ENGINEER		STREET PLAN & PROFILE TRACT NO. 4107 GALVESTON DRIVE GRIDLEY WAY SCALE: 1" = 10' HORIZ. 1" = 1' VERT.		ACCOUNT NO. DRAWING NUMBER R-1485 SHEET 3 OF 4 TO-305 A	
DESIGNED BY R.E.G. DRAWN BY V.C. CHECKED BY R.C.B.		DATE 3/9/71		DATE 3/9/71		DATE 3/9/71	



BENCH MARK
 THE BENCH MARK USED FOR THIS PROJECT IS A BENCH MARK IN THE VICINITY OF THE PROJECT. THE ELEVATION OF THIS BENCH MARK IS 750.00 FEET.



CURB DATA			
STATION	TYPE	WIDTH	HEIGHT
10+00	CONCRETE	4.00	4.00
10+50	CONCRETE	4.00	4.00
11+00	CONCRETE	4.00	4.00
11+50	CONCRETE	4.00	4.00
12+00	CONCRETE	4.00	4.00
12+50	CONCRETE	4.00	4.00
13+00	CONCRETE	4.00	4.00
13+50	CONCRETE	4.00	4.00
14+00	CONCRETE	4.00	4.00
14+50	CONCRETE	4.00	4.00
15+00	CONCRETE	4.00	4.00
15+50	CONCRETE	4.00	4.00
16+00	CONCRETE	4.00	4.00
16+50	CONCRETE	4.00	4.00
17+00	CONCRETE	4.00	4.00
17+50	CONCRETE	4.00	4.00
18+00	CONCRETE	4.00	4.00
18+50	CONCRETE	4.00	4.00

ALBERT A. WEBB ASSOCIATES CIVIL ENGINEERS RIVERSIDE, CALIFORNIA APPROVED BY: <i>[Signature]</i> DATE: 3/8/41 R.E. No. 0272	REVISIONS APP. DATE	CITY OF RIVERSIDE, CALIFORNIA PUBLIC WORKS DEPARTMENT		STREET PLAN & PROFILE TRACT NO. 4107 STILLWELL DRIVE DUNLOP DRIVE		ACCOUNT NO. DRAWING NUMBER R-1485
		APPROVED BY: <i>[Signature]</i> DATE: 3/8/41 PRINCIPAL ENGINEER TRAFFIC DIVISION CHIEF PUBLIC WORKS ENGINEER	APPROVED BY: <i>[Signature]</i> DATE: 3/8/41 DIRECTOR OF PUBLIC WORKS	SCALES: HORIZ. 1"=50' VERT. 1"=5'		SHEET 4 OF 4 70-305-A