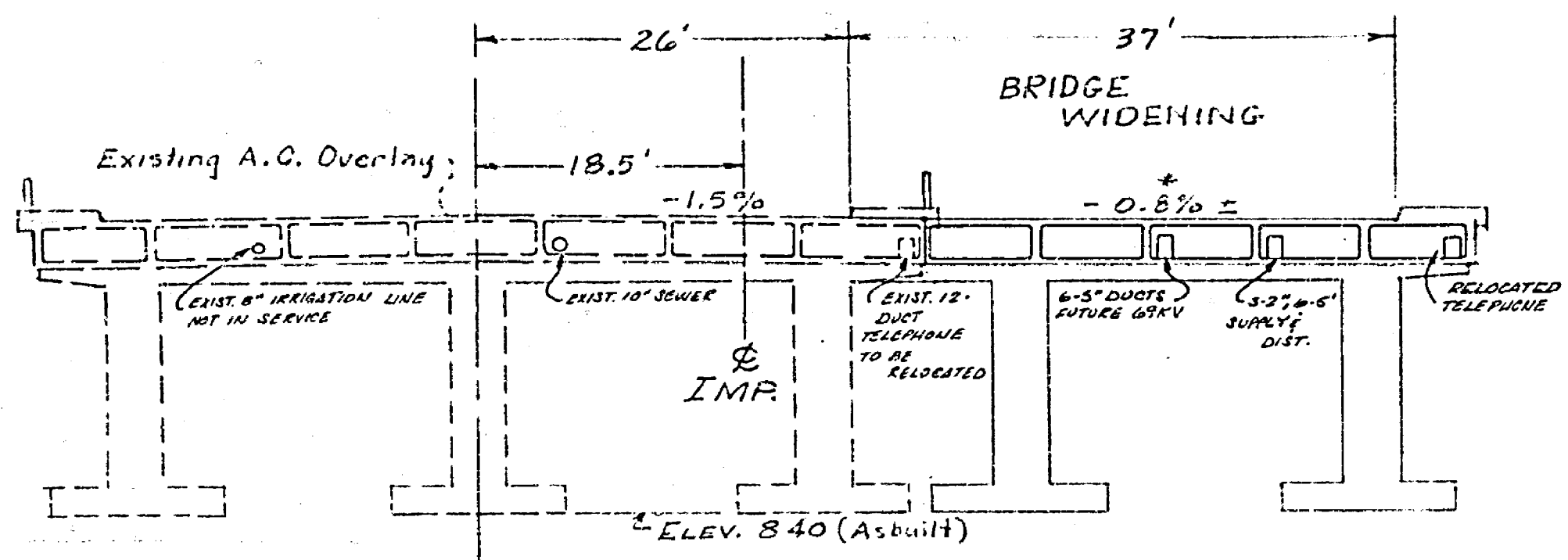


REV.	DATE	BY	REASON
05	REV	91	20.0

* Revise super-elevation as needed to provide for minimum clearance.

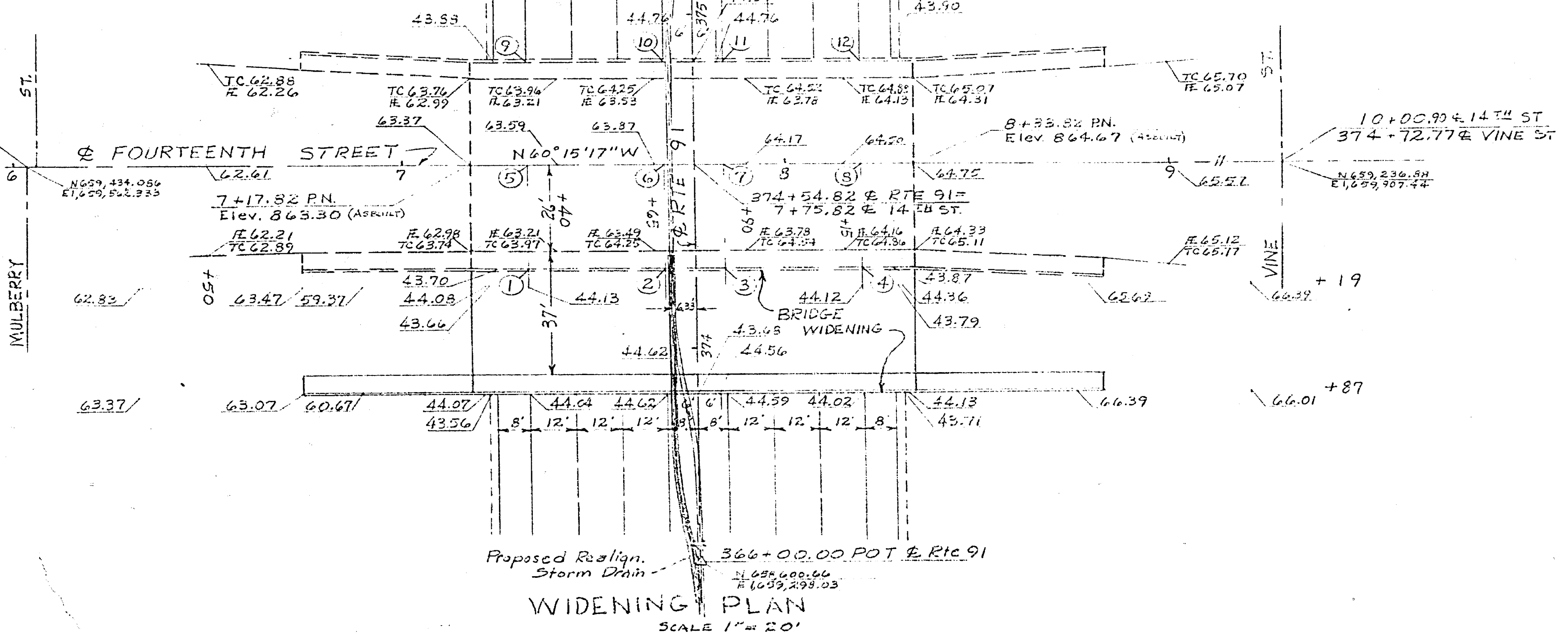
BM #38-A
 Fd. Lead & Sp. Hd. Nail in D.I.
 Rt. of Sta. 372 + 20 C.R. 91
 Elev. 845.97'
 BM - 14TH & Vine - 52
 Elev. 869.90'



EXIST. 14TH STREET
 TYPICAL WIDENING SECTION
 SCALE 1" = 10'

TABLE OF CLEARANCE UNDER EXISTING BRIDGE

	ELEV. ON H.W.Y.	SOFFIT ELEV.	CLEARANCE
①	844.13	859.52	15.39
②	844.66	859.91	15.25
③	844.67	860.08	15.41
④	844.09	860.55	16.46
⑤	844.15	859.39	15.24
⑥	844.73	860.37	15.64
⑦	844.72	860.54	15.82
⑧	844.13	860.99	16.86
⑨	844.21	859.51	15.30
⑩	844.76	859.93	15.17
⑪	844.79	860.07	15.28
⑫	844.20	860.57	16.37



WIDENING PLAN
 SCALE 1" = 20'

08-Riv-91-P.M.20.0
 BRIDGE SITE PLAN
 FOURTEENTH STREET O.C. WIDENING
 BRIDGE NO. 56-313
 SCALE AS SHOWN

JLP 4-10-72

Project Engineer	Date	Design Engineer	Date	Approval Recommended By	Date
------------------	------	-----------------	------	-------------------------	------

R-1486 F