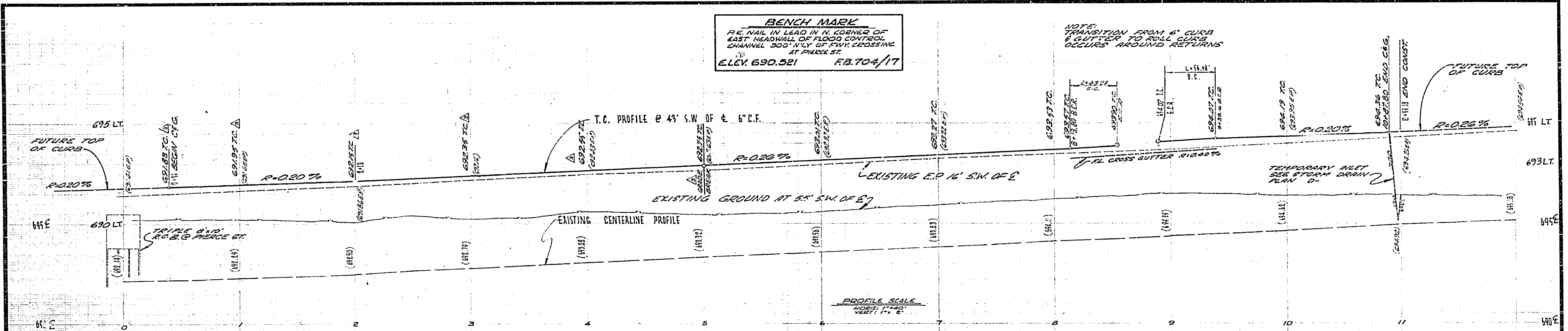


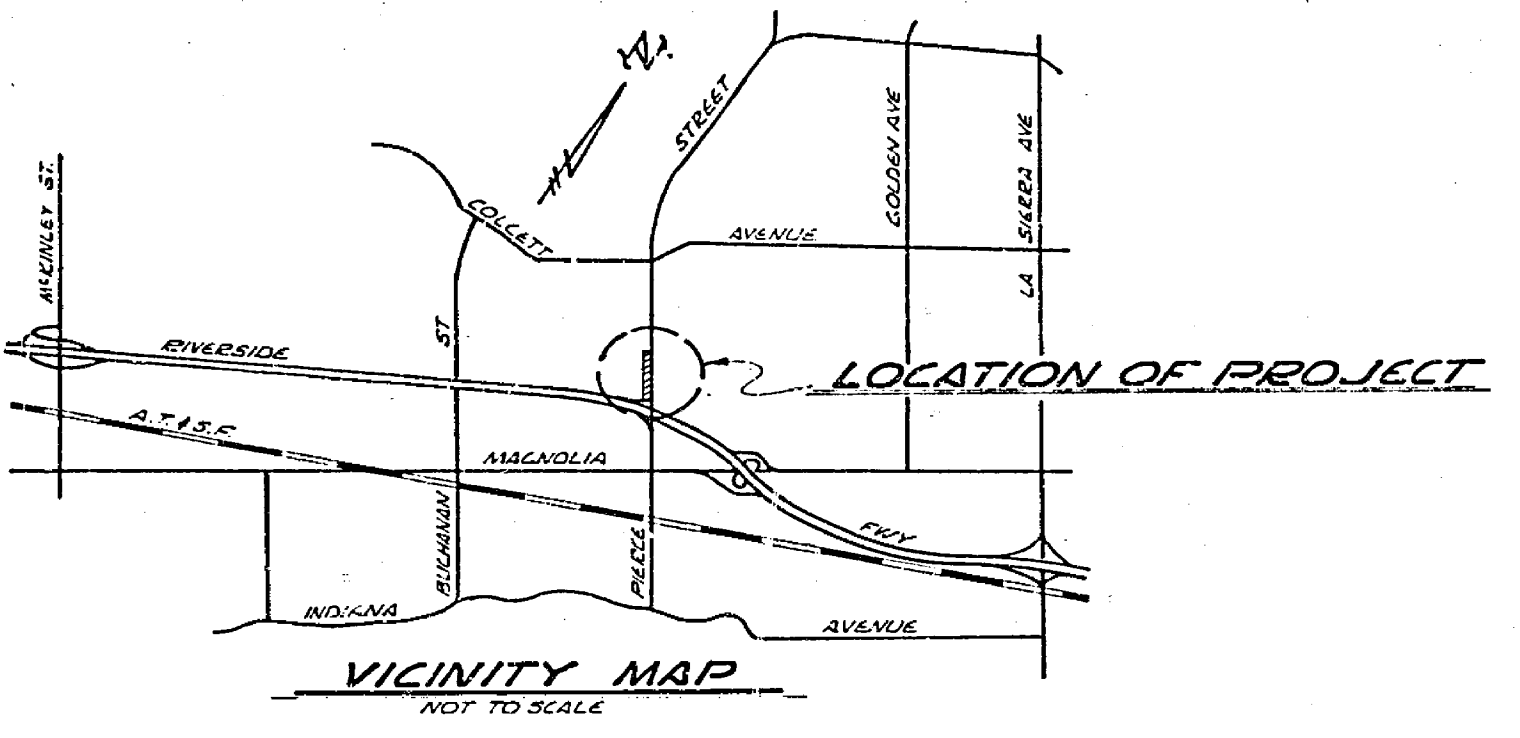
BENCH MARK
 R.E. NAIL IN LEAD IN N. CORNER OF
 EAST HEADWALL OF FLOOD CONTROL
 CHANNEL 300' N.W. OF CIVIL CROSSING
 AT PIERCE ST.
 ELEV. 690.521 F.B. 704/17

NOTE:
 TRANSITION FROM 6" CURB
 & GUTTER TO ROLL CURB
 OCCURS AROUND RETURNS



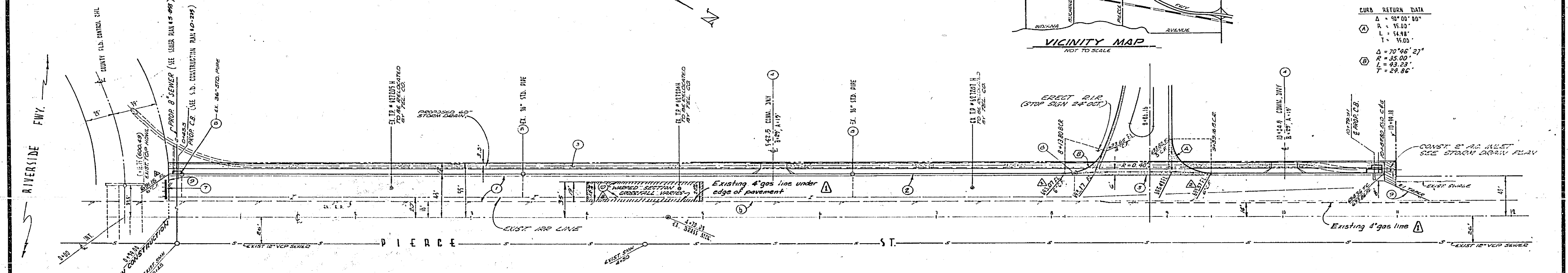
GENERAL NOTES

- IT SHALL BE THE RESPONSIBILITY OF THE CONTRACTOR TO CLEAR THE RIGHT OF WAY IN ACCORDANCE WITH THE PROVISIONS OF THE LAW AS IT AFFECTS EACH UTILITY INCLUDING RELOCATION LINES AND ADJUSTMENTS AND AT NO COST TO THE CITY.
- CONSTRUCTION SHALL BE IN ACCORDANCE WITH STANDARD SPECIFICATIONS FOR PUBLIC WORKS CONSTRUCTION, 1970 EDITION AND PER CITY OF RIVERSIDE STANDARD DRAWINGS.
- THE DEVELOPER SHALL ARRANGE TO HAVE A SOILS TEST TAKEN BY A SOILS ENGINEER AT SUBGRADE TO DETERMINE THE THICKNESS OF PAVING & BASE IN ACCORDANCE WITH THE CITY OF RIVERSIDE SPECIFICATIONS.
- ALL FLAGGED ELEVATIONS SHALL BE STAKED IN THE FIELD BY THE ENGINEER.
- ENGINEER ESTIMATES OVERLAY TO BE 76 TONS.



CURB RETURN DATA

Δ	90° 00' 00"
R	57.00'
L	54.98'
T	16.00'
Δ	70° 56' 27"
R	33.00'
L	43.23'
T	24.86'



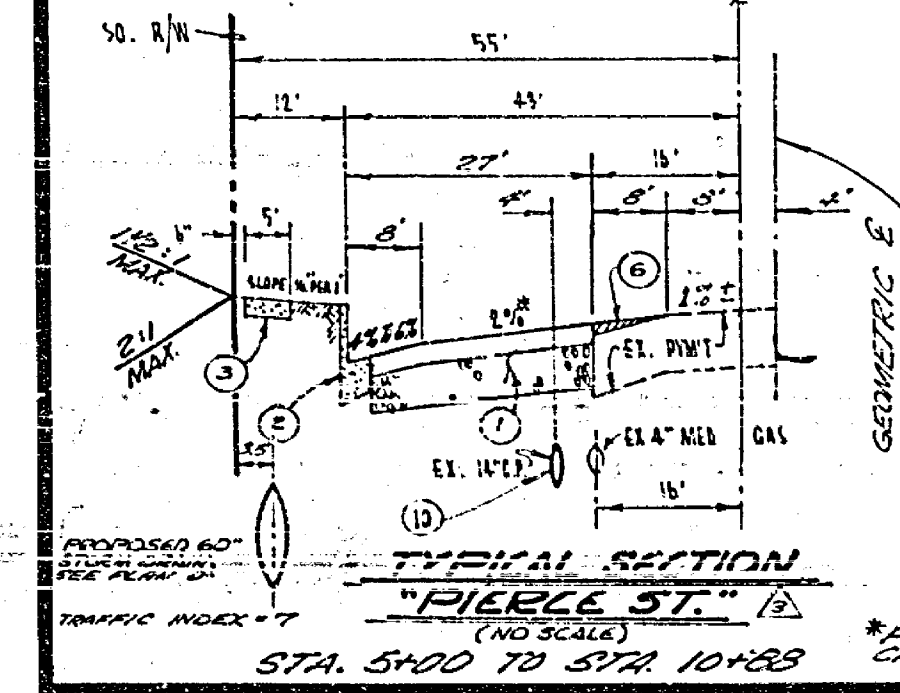
CONSTRUCTION NOTES

- CONSTRUCT 4" A.C. OVER 8" OF CLASS 2 A.B. 1/2" GALVANIZED.
- CONSTRUCT CURB & GUTTER PER CITY OF RIVERSIDE STD. DWG. # 200 (6" C.F.).
- CONSTRUCT 4" THICK CONC. SIDEWALK PER CITY OF RIVERSIDE STD. DWG. # 350.
- CONSTRUCT DRIVEWAY PER CITY OF RIVERSIDE STD. DWG. # 302.
- CONSTRUCT CROSS GUTTER PER CITY OF RIVERSIDE STD. DWG. # 250.
- CONSTRUCT VARIABLE THICKNESS OVERLAY AT 2%.
- INSTALL BARRICADE PER CITY OF RIVERSIDE STD. DWG. # 180, LENGTH 84'. (SUBSTITUTE 1/2" X 2" FOR 1/2" X 1/2" & 1/2" X 1/2" ONE AT EACH END OF BARRICADE)
- REMOVE EXISTING STAND PIPE.
- INSTALL REDWOOD HEADER (2" X 4")
- REMOVE EX. 14" IRRIGATION LINE OR CRUSH IN PLACE

PRIVATE ENGINEER'S NOTICE TO CONTRACTOR

The existence and location of any underground utilities or structures shown on these plans are obtained by a search of available records. To the best of our knowledge there are no existing utilities except those shown on this plan. The Contractor is required to take all precautionary measures to protect the utilities shown, and any other lines or structures not shown on these plans, and is responsible for the protection of, and any damage to these lines or structures.

PREPARED IN THE OFFICE OF
WILLIAM G. CHURCH
 CONSULTING CIVIL ENGINEERS
 3923 CAMPUS DRIVE
 NEWPORT BEACH
 CALIFORNIA 92660
 PHONE (714) 540-7377



CITY OF RIVERSIDE, CALIFORNIA DEPARTMENT OF PUBLIC WORKS		STREET IMPROVEMENT PLAN SOUTH SIDE PIERCE STREET RIVERSIDE FWY. TO 1200' N.E. OF FWY. 100' W. 37' & C-29-701		PROJECT NO. R-1514
DESIGNED BY: _____ DRAWN BY: _____ CHECKED BY: _____	APPROVED BY: _____ OFFICE ENGINEER DATE: 5/20/71	APPROVED BY: _____ DIRECTOR OF PUBLIC WORKS DATE: 5/20/71	SHEET 1 OF 1	FILE NO. J.N. 890 (17)