

ASSESSMENT NO. 454

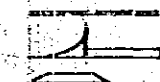
DIAGRAM

EXHIBITING COTTAGE STREET IMPROVEMENT DISTRICT  
IN THE CITY OF RIVERSIDE, CALIFORNIA, AND THE WORK WHICH HAS BEEN DONE  
PURSUANT TO THE CONTRACT BETWEEN THE SUPERINTENDENT OF STREETS OF  
SAID CITY AND CARL L. FREJD, DATED OCTOBER 28, 1958,  
FOR THE CONSTRUCTION OF COMBINATION CURB AND GUTTER, CROSS GUTTER AND  
APRONS, AND A DRIVEWAY APPROACH.

AS IS MORE PARTICULARLY DESCRIBED IN SAID CONTRACT, TO WHICH REFERENCE  
IS HEREBY MADE FOR FURTHER PARTICULARS.  
SAID DIAGRAM ALSO SHOWS EACH SEPARATE LOT OR PARCEL OF LAND WITHIN THE  
LIMITS OF THE ASSESSMENT DISTRICT, AND THE DIMENSIONS OF EACH SUCH LOT OR  
PARCEL OF LAND, AND THE RELATIVE LOCATION OF THE SAME TO THE WORK DONE.  
EACH LOT OR PARCEL OF LAND IS NUMBERED IN CIRCLES TO CORRESPOND TO THE  
RED INK NUMBERS IN THE ASSESSMENT.  
HEREIN FIGURES NEXT TO PROPERTY LINES SHOW LENGTH OF SAID LINES IN FEET  
AND DECIMALS THEREOF.  
THE MARK (') MEANS FEET.  
PROPERTY LINES THAT DIFFER FROM THE RECORDED SUBDIVISIONS ARE SHOWN BY  
BROKEN LINES.  
THE DISTRICT BENEFITED IS BOUNDED BY A HEAVY DASHED LINE.  
PROPERTY INCLUDED IN THIS ASSESSMENT IS SHOWN ON THE FOLLOWING RECORD-  
ED MAPS:  
SANTA FE TRACT M.B. 6/14 REC. S.B. CO.

HEREIN THE DIFFERENT KINDS OF WORK  
PERFORMED ARE SHOWN AS FOLLOWS:

COMB. CURB AND GUTTER  
CROSS GUTTER AND APRON  
DRIVEWAY APPROACH



HERE FOLLOWS A STATEMENT OF AMOUNTS OF  
DIFFERENT KINDS OF WORK DONE PURSUANT TO  
THE HERE-IN-BEFORE IDENTIFIED CONTRACT  
AND TO RESOLUTION OF INTENTION NO. 8318  
ADOPTED BY THE CITY COUNCIL OF THE CITY  
OF RIVERSIDE, CALIFORNIA ON THE 12TH DAY  
OF AUGUST, 1958.

828.9 LIN. FT. COMB. CURB AND GUTTER RIV. STD. 200  
328 SQ. FT. CROSS GUTTER AND APRONS RIV. STD. 220  
132 SQ. FT. DRIVEWAY APPROACH RIV. STD. 301

I HEREBY CERTIFY THAT THE ABOVE WORK WAS DONE IN ACCORDANCE  
WITH LINES AND GRADES FURNISHED OR APPROVED BY ME, AND THAT  
THE DIAGRAM OF THE ASSESSMENT DISTRICT AND THE QUANTITIES  
OF WORK SHOWN HEREON ARE CORRECT.

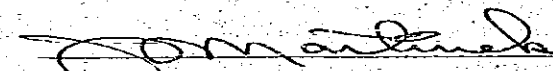
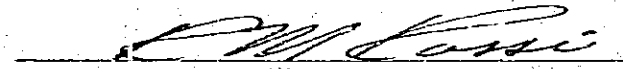
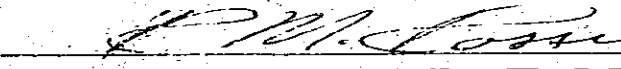
  
CITY ENGINEER OF THE  
CITY OF RIVERSIDE, CALIFORNIA

DIAGRAM RECEIVED:  
THIS 16TH DAY OF DECEMBER, 1958.

  
SUPERINTENDENT OF STREETS OF THE  
CITY OF RIVERSIDE, CALIFORNIA

RECORDED:  
AT 4:30 O'CLOCK, P.M.,  
THIS 20TH DAY OF JANUARY, 1959.

  
SUPERINTENDENT OF STREETS OF THE  
CITY OF RIVERSIDE, CALIFORNIA

SCALE: 1" = 100'

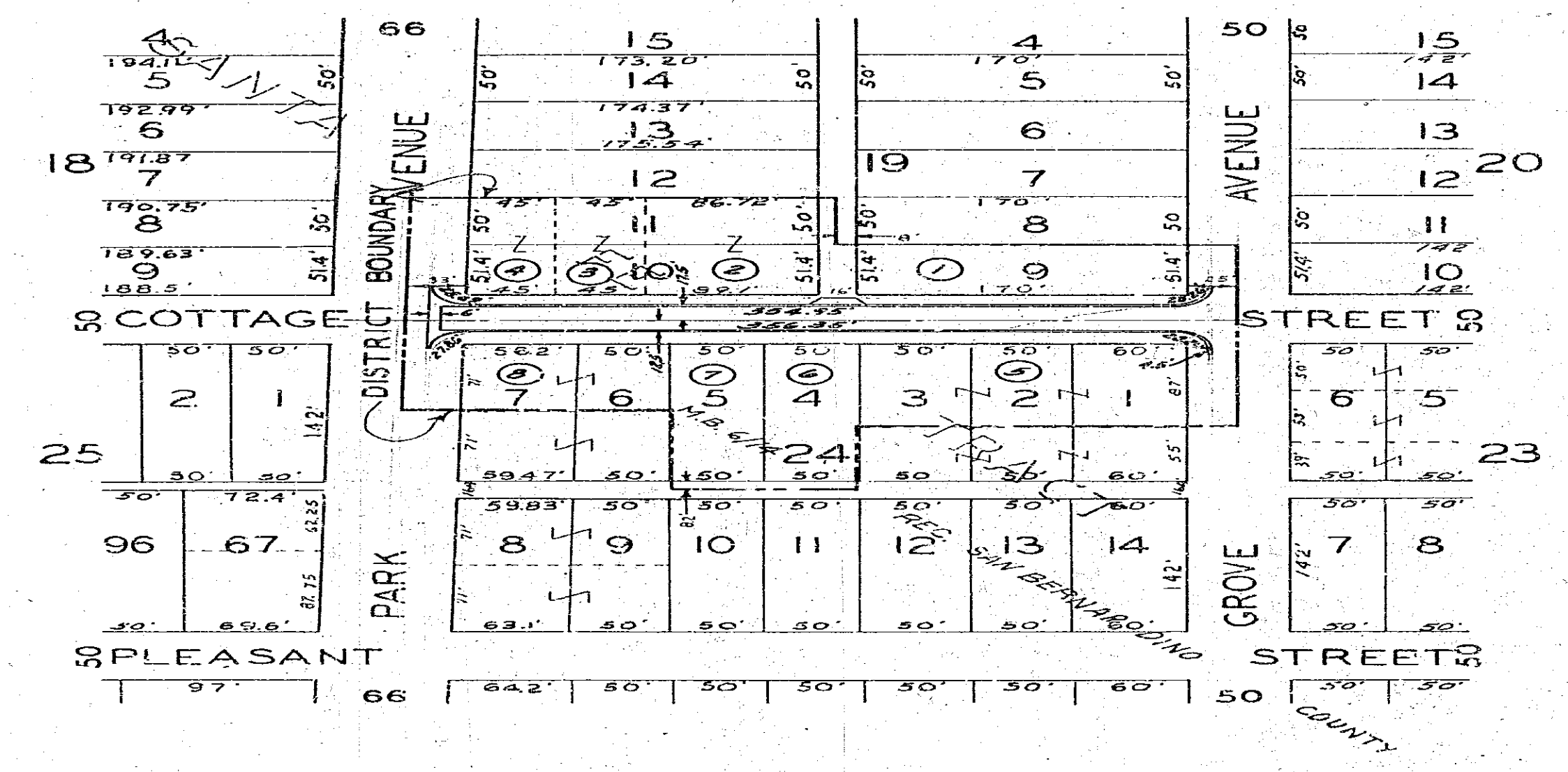


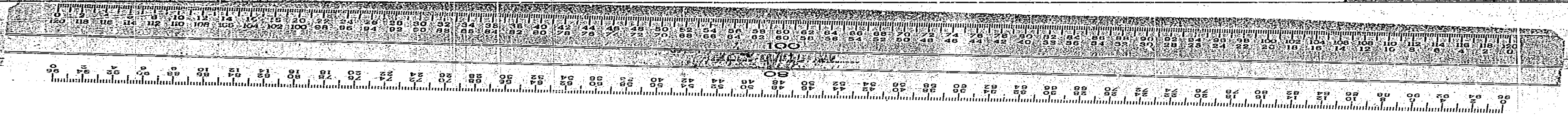
DIAGRAM  
 OF THE PROPERTY AFFECTED OR BENEFITED  
 BY THE WORK IN THE  
 COTTAGE STREET IMPROVEMENT DISTRICT

CITY OF RIVERSIDE CALIFORNIA  
 DEPARTMENT OF PUBLIC WORKS

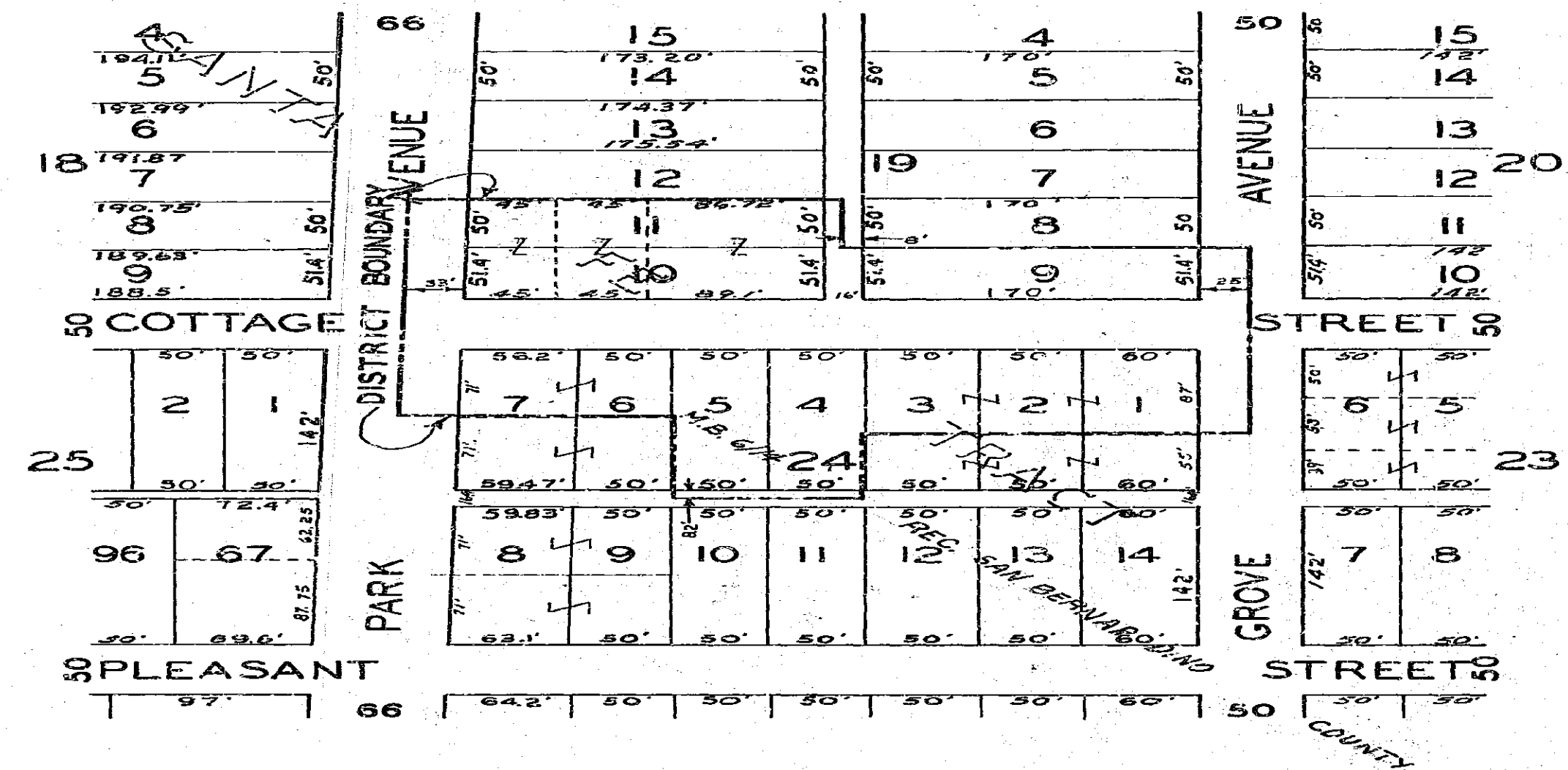
COTTAGE STREET  
 IMPROVEMENT DISTRICT

APPROVED BY  
*[Signature]*  
 DIRECTOR OF PUBLIC WORKS  
 DATE Dec 10, 1938

R-155 B  
 SHEET 2 OF 2



SCALE: 1" = 100'



MAP SHOWING THE LANDS INCLUDED WITHIN THE ASSESSMENT DISTRICT TO BE BENEFITED BY THE CONSTRUCTION OF CURBS & GUTTERS.

COTTAGE STREET IMPROVEMENT DISTRICT

PARK AVENUE TO GROVE AVENUE

B. LOW

*James L. Taylor*

*J. M. Antine*  
July 24, 1918

**R-155-A**

