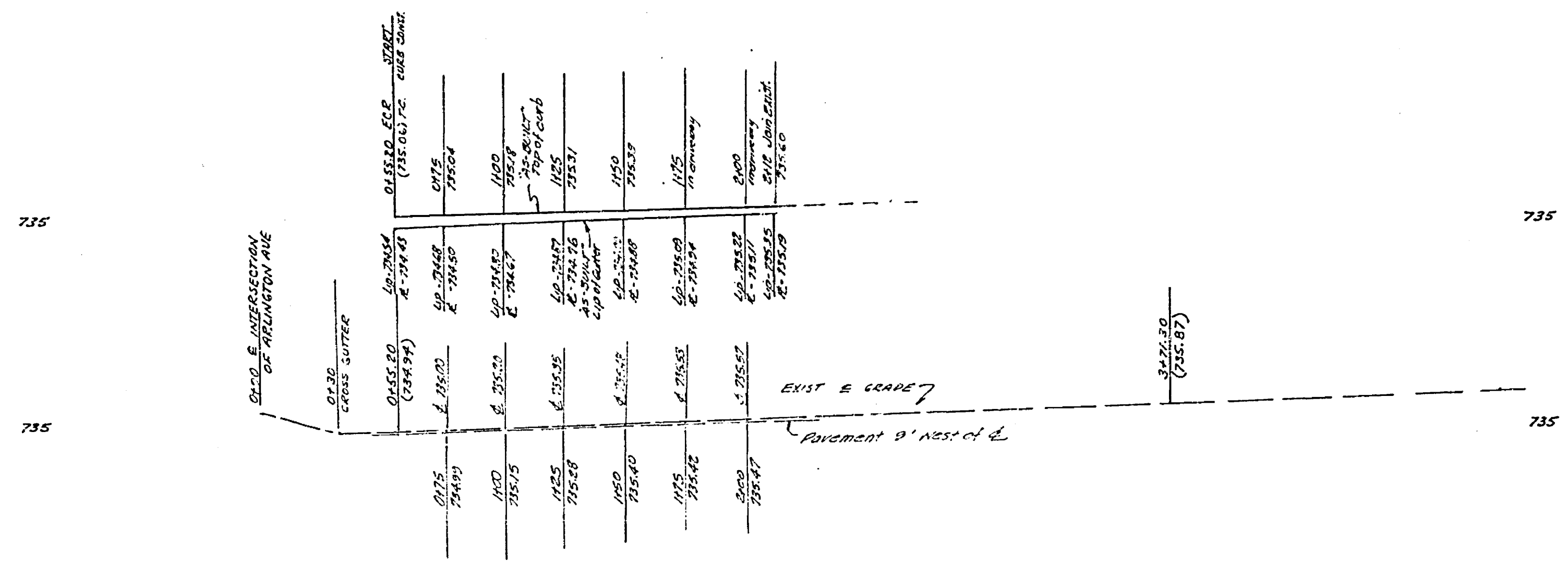


GENERAL NOTES

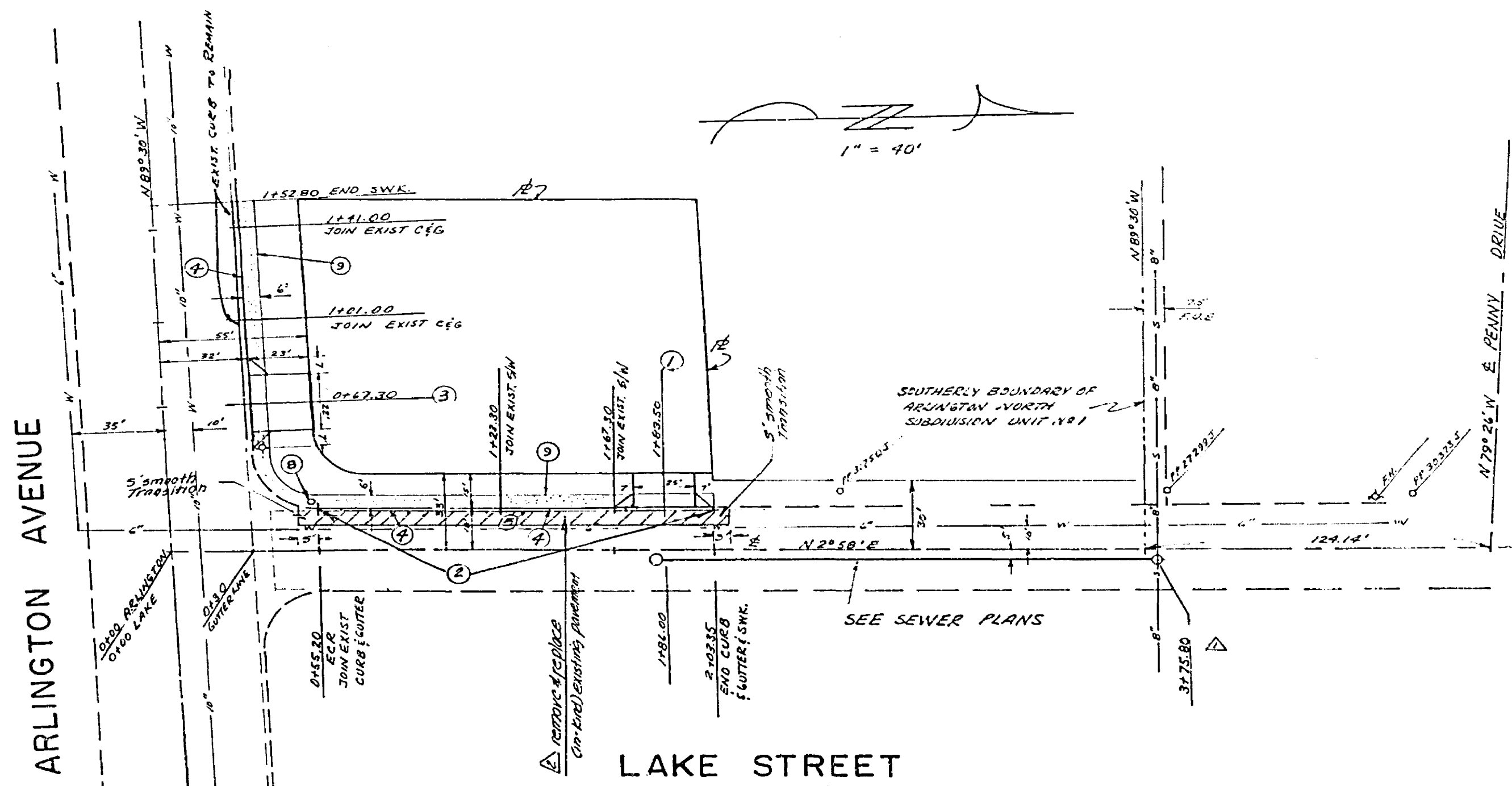
1. CONSTRUCTION SHALL BE IN ACCORDANCE WITH STANDARD SPECIFICATIONS FOR PUBLIC WORKS CONSTRUCTION, 1970 EDITION, AND CITY OF RIVERSIDE STANDARD DRAWINGS.

THE CONTRACTOR SHALL DETERMINE THE TRUE LOCATION OF ANY UNDERGROUND UTILITIES PRIOR TO LAYING ANY LINES WHICH ARE TO CONNECT TO EXISTING SEWERS OR WATER LINES. THESE LINES SHALL BE EXPOSED AND JOIN POSITIONS VERIFIED. THE CONTRACTOR SHALL PROTECT ALL UNDERGROUND UTILITIES.



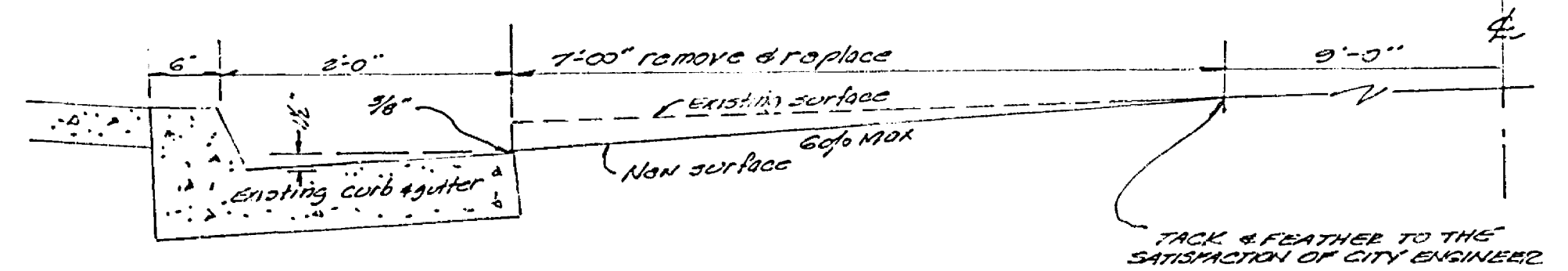
BENCH MARK - G-3-E
FOUND PK NAIL IN N.E. CURB RETURN
ARLINGTON & RUT LAND F.B. 739/58
ELEV. 746.24

PROFILE SCALE:
1" = 40' HORIZ.
1" = 4' VERT.



- CONSTRUCTION NOTES**
1. CONSTRUCT 25'x33' COMMERCIAL DRIVEWAY PER CITY STD 302
 2. REMOVE EXIST CURB & GUTTER
 3. CONSTRUCT 22'x36' COMMERCIAL DRIVEWAY PER STD 302
 4. CONSTRUCT STD 6" CURB & GUTTER PER CITY STANDARD 200
 5. REPLACE 1" OF A.C. PAVING TO DEPTH OF 6" WHERE REMAINING EXIST C&G
 6. OMITTED
 7. STOP SIGN & STREET NAME SIGN TO BE MAINTAINED IN PLACE.
 8. CONSTRUCT CURB SIDEWALK PER CITY STD 325

REMOVE & REPLACE "IN-KIND" (OR AT THE DIRECTION OF THE CITY ENGINEER) EXISTING PAVEMENT



Samuel Salkin
SAMUEL SALKIN RCE 13420
14 FEB 1972
DATE

REVISIONS 1. REVISED SEWER M.H. STA. 240 2. REMOVE & REPLACE Pav.	CITY OF RIVERSIDE, CALIFORNIA DEPARTMENT OF PUBLIC WORKS	STREET IMPROVEMENTS N.W. CORNER OF LAKE ST. & ARLINGTON AVE. R-70-645.	PROJECT NO. R-1564
DESIGNED BY: <i>FPD</i> DRAWN BY: <i>FPD</i> CHECKED BY: <i>LL</i>	APPROVED BY: _____ OFFICE ENGINEER TRAFFIC DIVISION ASSISTANT CITY ENG.	DATE: <i>3/30/72</i>	SHEET: <i>1</i> OF <i>1</i> FILE NO.