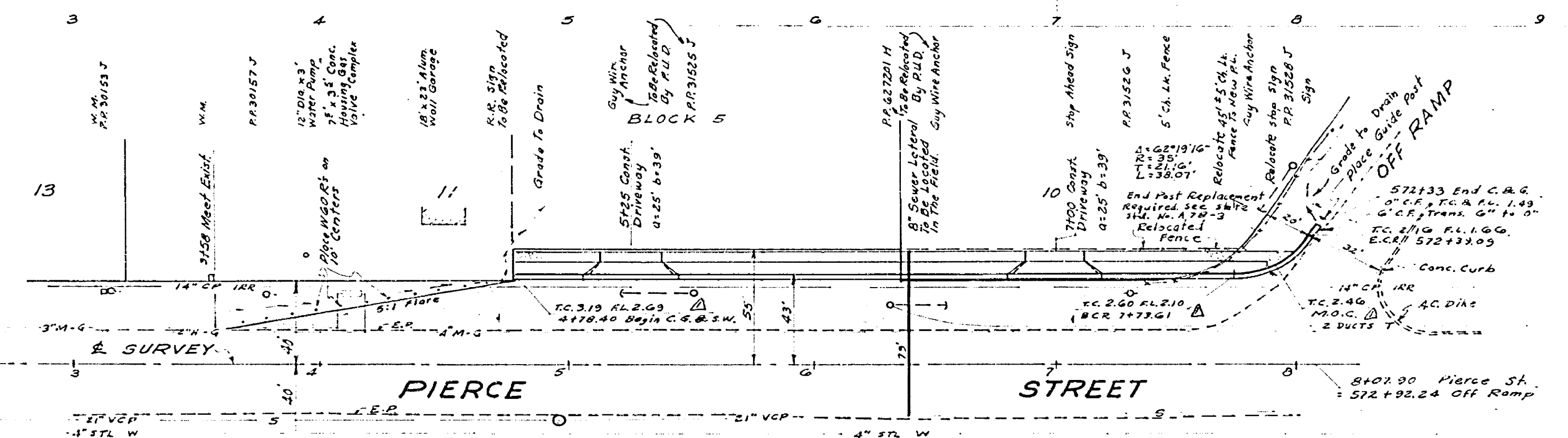
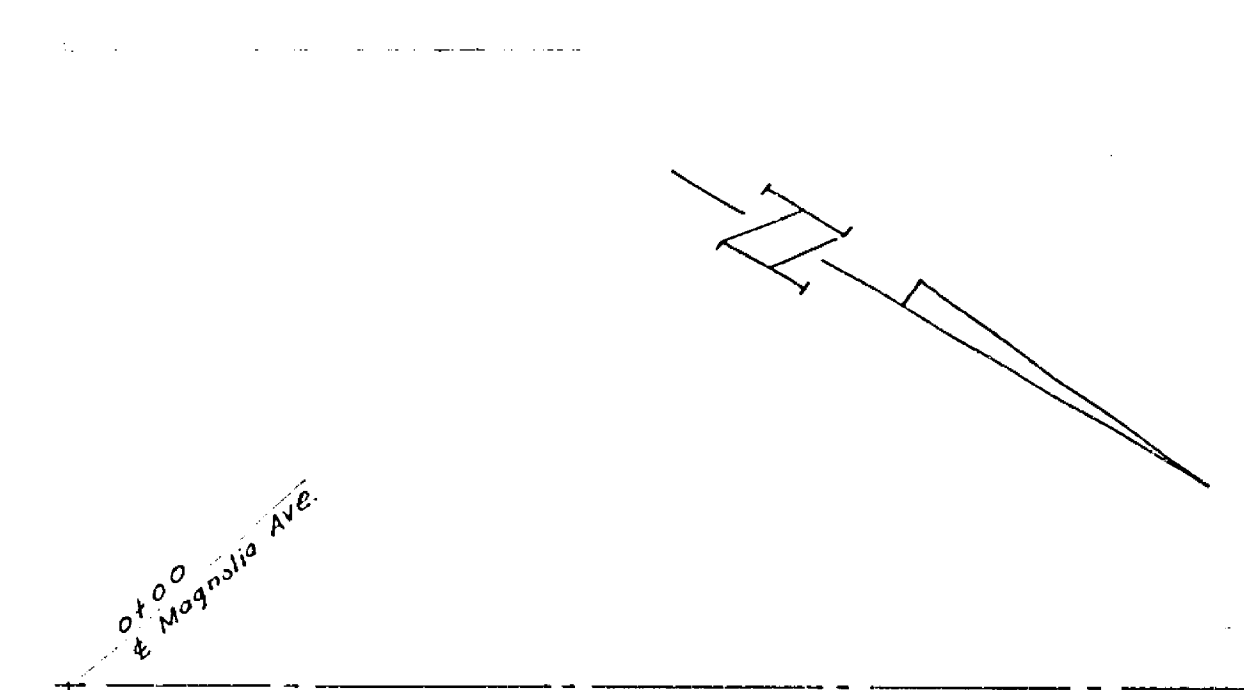
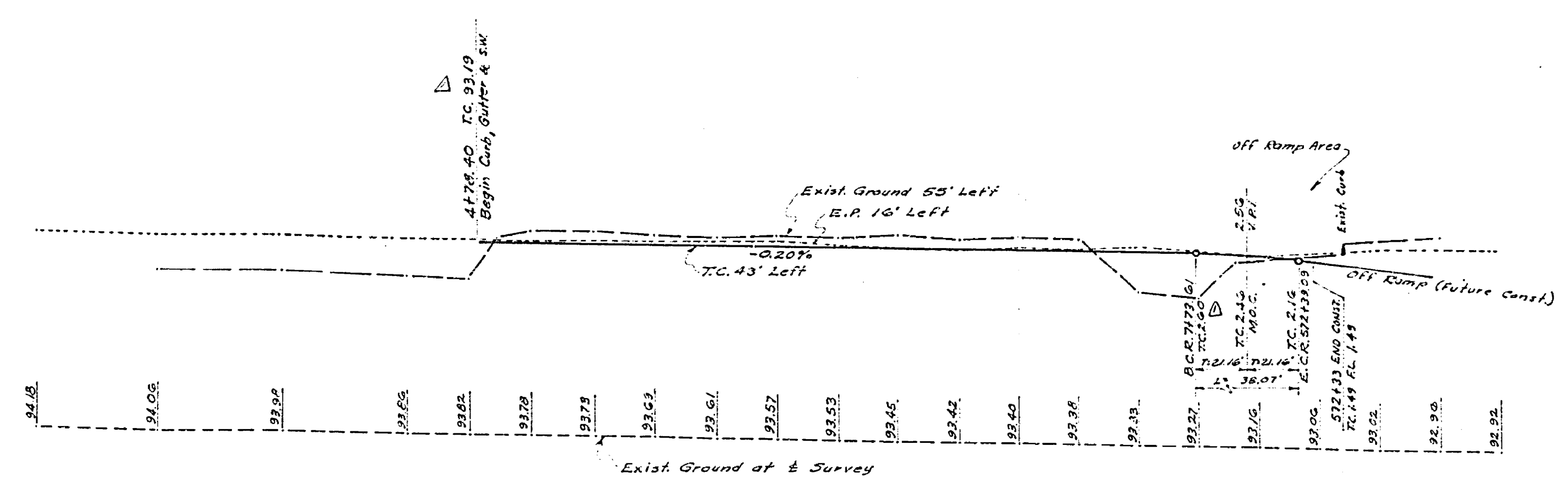
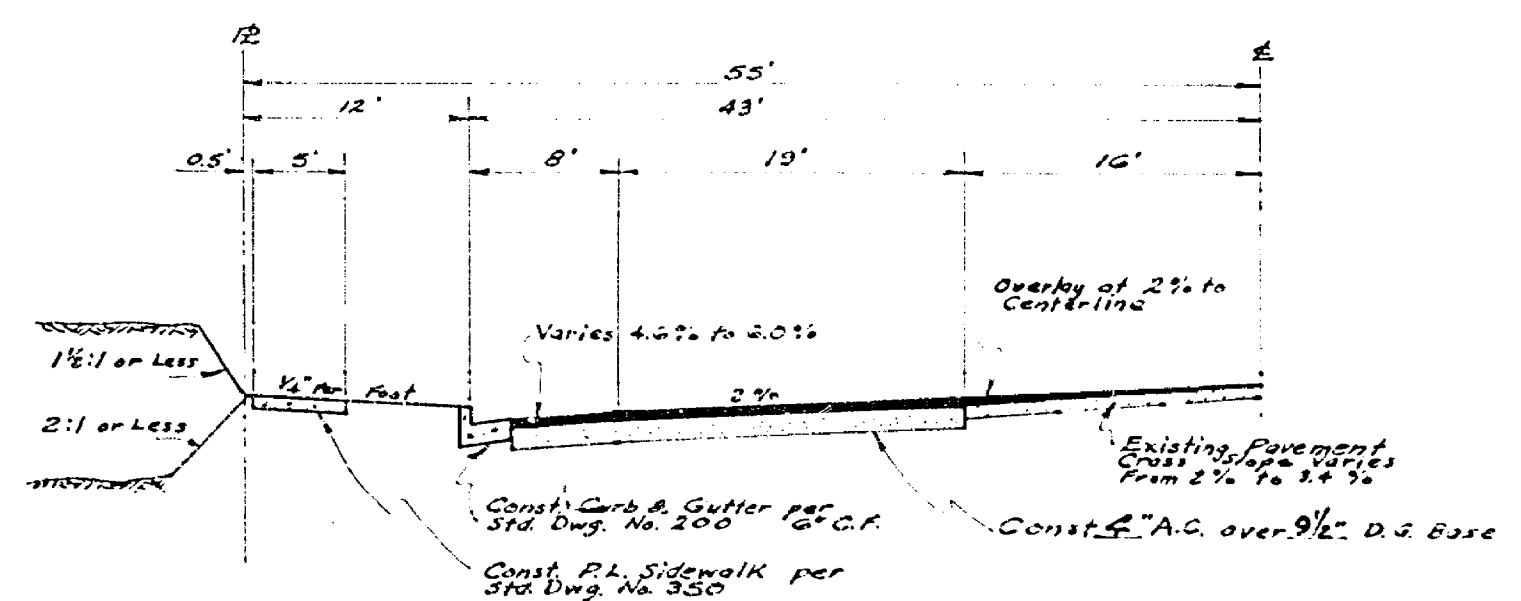


W.P.L. 695
694
693

E 695
694
693



- Notes:**
1. It shall be the responsibility of the contractor to clear the right of way in accordance with the provisions of law as it affects each utility, including irrigation lines and appurtenances, and of no cost to the City.
 2. Construction shall be in accordance with the Standard Specifications for Public Works Construction, 1970 Edition and City of Riverside Standard Drawings.
 3. Prime coat, seal coat, and patching are required.
 4. Trim edge of existing pavement, where new paving joins existing pavement, to a clean, straight line. Construct match-up paving as shown and overlay paving as directed in the field to produce a smooth crown section.
 5. Driveway approaches for each lot to be constructed per City of Riverside Standard No. 302.
 6. Bench Mark: PK nail in lead in North cor. of E. Headwall of Flood Control Channel 300' N'y. of Frwy. X-ing & Pierce. ELEV. 690.52
 7. The quantity estimate shown hereon is for information only and the City assumes no responsibility for its accuracy.
 8. The subdivider shall arrange for a soil test to be made by a State Engineer after the streets have been prepared to ~~weight~~ grade. Depth of base material and A.C. paving shall be determined by City of Riverside Design Standards and Test Procedures.
 9. An encroachment permit from the State is required prior to commencing construction within the freeway right of way.



**TYPICAL SECTION
PIERCE STREET**
T.L. 70 Scale: Horiz. 1" = 10'
Vert. 1" = 4'

LA SIERRA GARDENS
M.B. 11/42-50

Estimate of Quantities

1. Curb and Gutter	341 L.F.
2. Sidewalk	1610 S.F.
3. A.C. Paving	9100 S.F.
4. Base Material	9100 S.F.
5. W.G.R.	12 Ea.
6. Pavement Overlay	6400 S.F.
7. 8" V.C.R. Lateral	79 L.F.
8. Driveway Approaches	2 Ea.

ERNEST PINTOR LAND SURVEYOR 3920 11TH ST. RIVERSIDE, CALIFORNIA JANUARY 1972 <i>Robert Joseph Smith R.C.E. 20315</i>		CITY OF RIVERSIDE, CALIFORNIA DEPARTMENT OF PUBLIC WORKS		STREET PLAN & PROFILE PIERCE STREET BETWEEN MAGNOLIA AVE. & RIVERSIDE FRWY		PROJECT NO. R-1569
DESIGNED BY DRAWN BY CHECKED BY	BY DATE	APPROVED BY OFFICE ENGINEER PARK DEPARTMENT TRAFFIC DIVISION ASSISTANT CITY ENG.	BY DATE	APPROVED BY DIRECTOR OF PUBLIC WORKS	DATE	SHEET 1 OF 1 FILE NO.
HORIZ. SCALE: 1" = 40' VERT. SCALE: 1" = 4'						