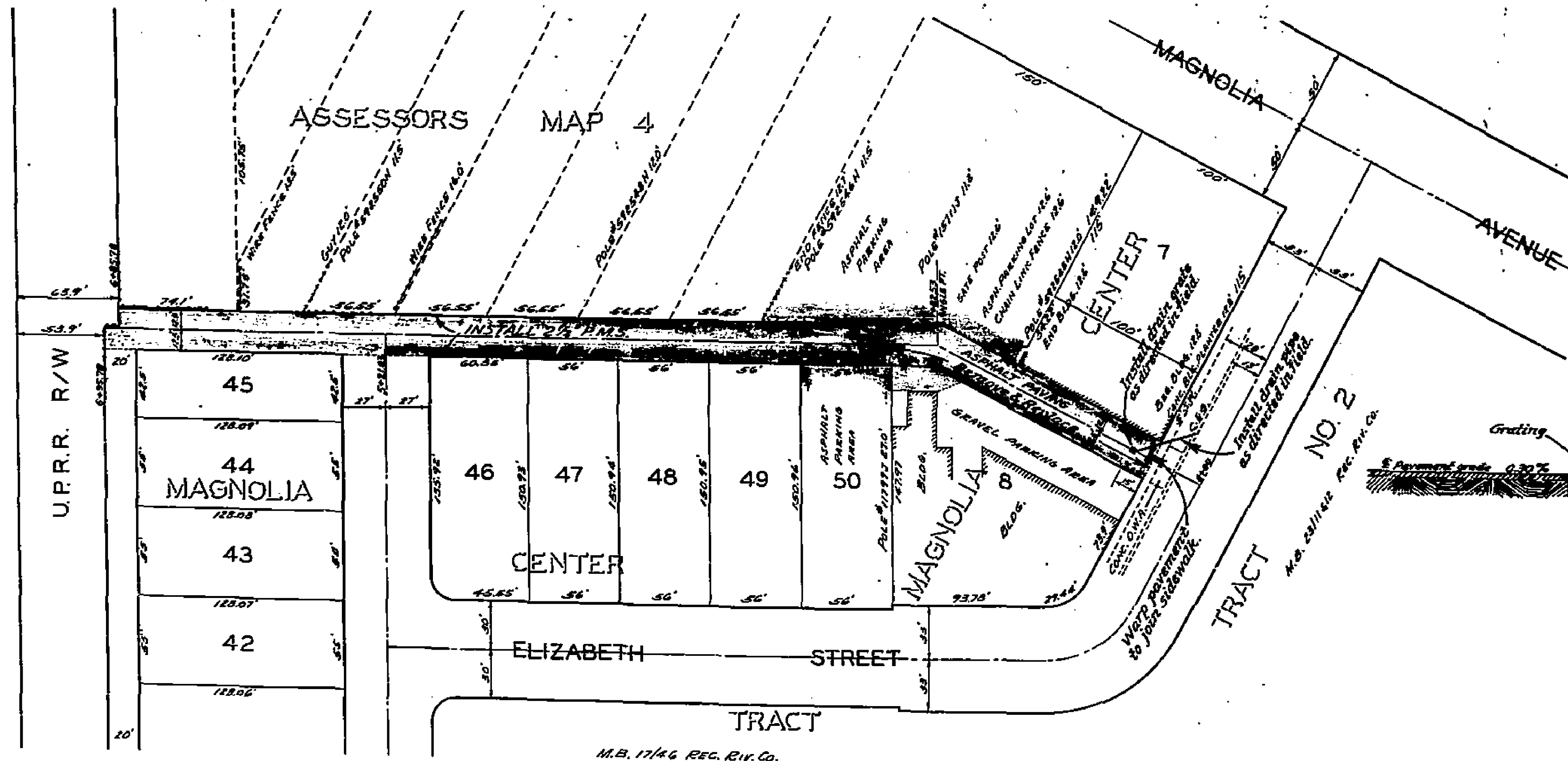
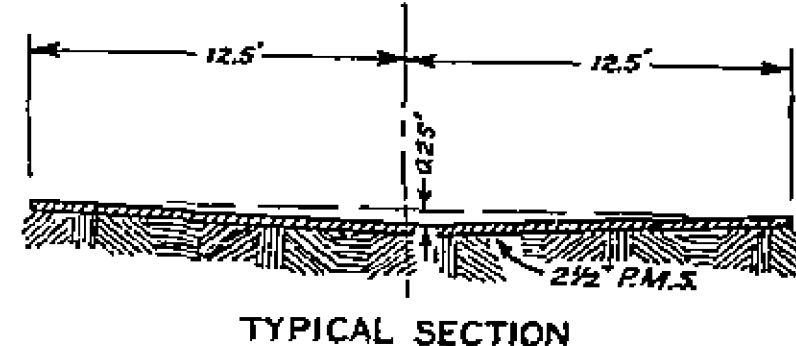
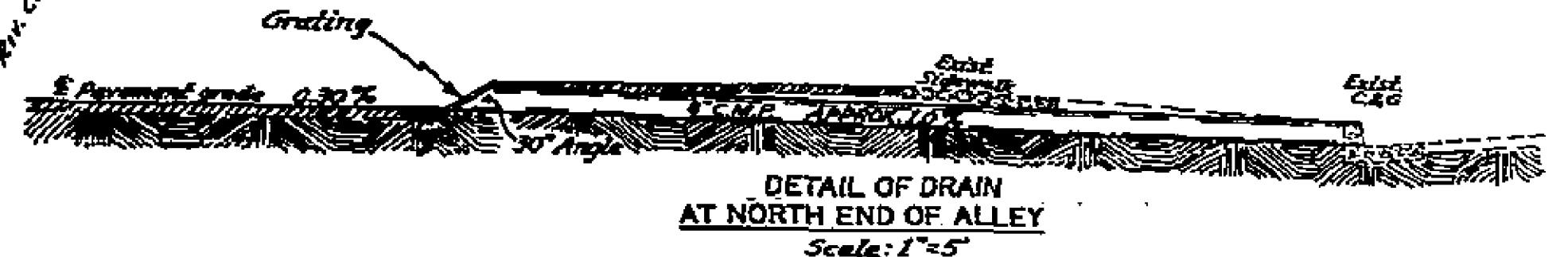


B.M. ELEV 83676 3.61 IN E. CURB
 MAENOLIA 10' S. OF S. PL. JUNCTION
 F.B. 677-15
 SCALES: HOR. 1"=50'
 VERT. 1"=5'



SCALE: 1"=50'



REVISIONS		CITY OF RIVERSIDE CALIFORNIA DEPARTMENT OF PUBLIC WORKS	
MARK	DATE	DESCRIPTION	
		PROPOSED PAVING OF ALLEY ELY. OF MAGNOLIA AVE. BETWEEN ELIZABETH ST. & U.P.R.R. R/W	
DESIGNED BY J.L.B.	CHECKED BY J.L.B.	APPROVED BY <i>[Signature]</i>	R-159
DRAWN BY <i>[Signature]</i>	RECOMMENDED BY <i>[Signature]</i>	DIRECTOR OF PUBLIC WORKS	DATE 10-30-57
		ASSISTANT CITY ENGINEER	SHEET 1 OF 1

