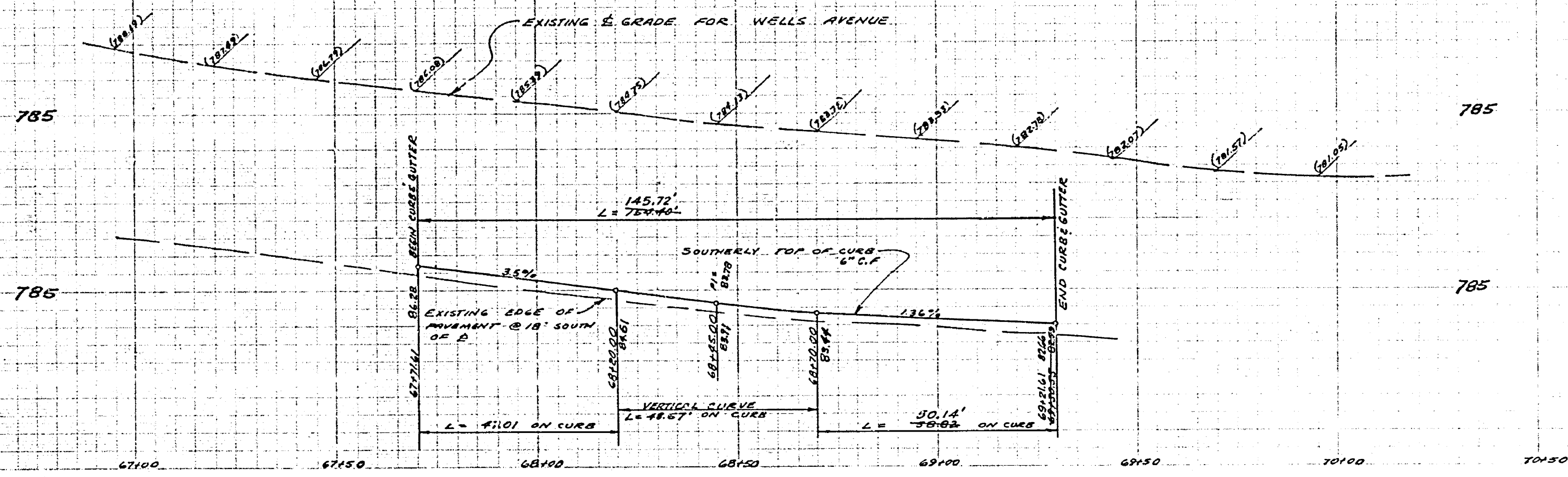


**GENERAL NOTES**

1. CONSTRUCTION SHALL BE IN ACCORDANCE WITH STANDARD SPECIFICATIONS FOR PUBLIC WORKS CONSTRUCTION, 1976 EDITION, AND CITY OF RIVERSIDE STANDARD DRAWINGS.

THE CONTRACTOR SHALL DETERMINE THE TRUE LOCATION OF ANY UNDERGROUND UTILITIES PRIOR TO LAYING ANY LINES WHICH ARE TO CONNECT TO EXISTING SEWERS OR WATER LINES. THESE LINES SHALL BE EXPOSED AND JOIN POSITIONS VERIFIED. THE CONTRACTOR SHALL PROTECT ALL UNDERGROUND UTILITIES.

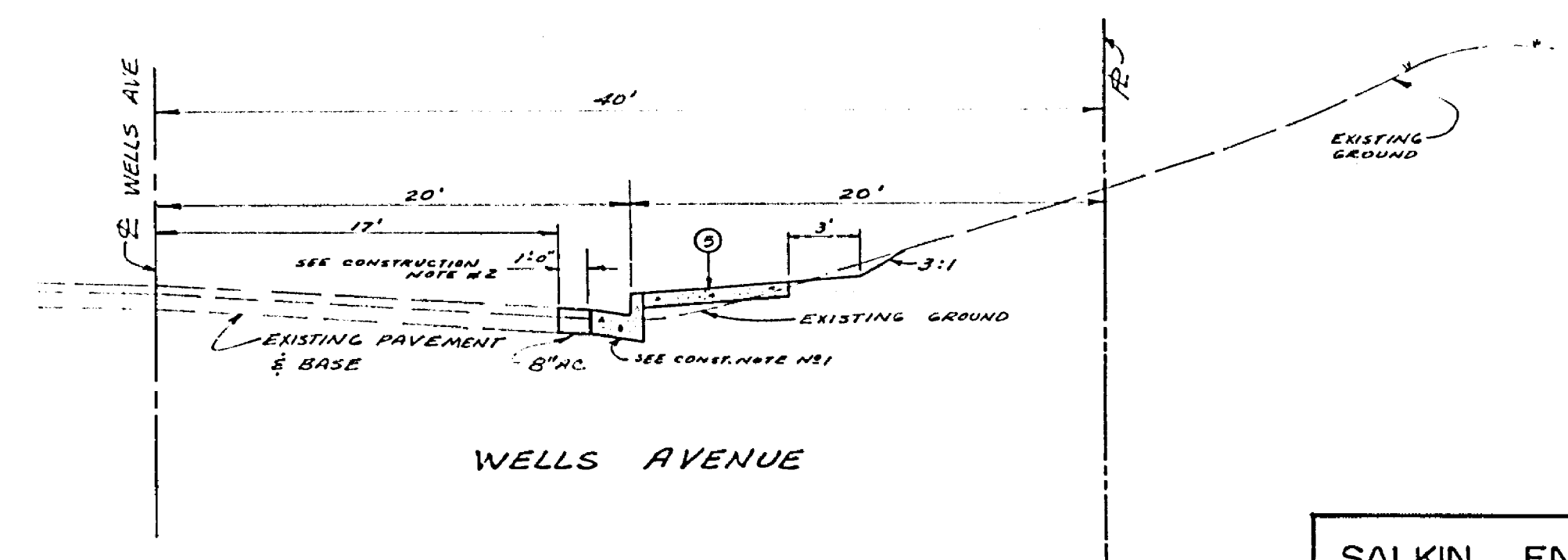


PROFILE SCALE  
1" = 4' VERT  
1" = 20' HORIZ.

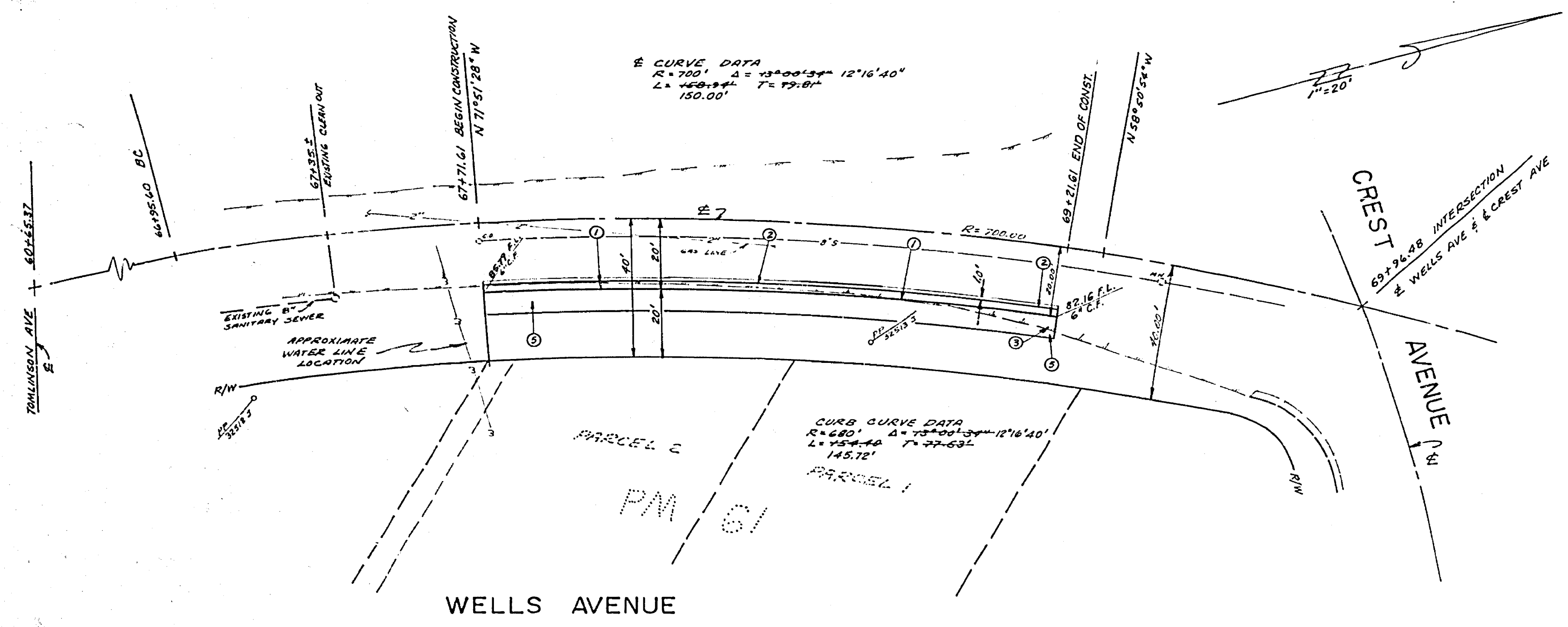
BENCH MARK 636 1/4" NAIL 1/4" ELY OF EC  
6" ELY CURB RET. OF WELLS/  
CREST FS 751/62 ELEV. 778.770

**CONSTRUCTION NOTES**

1. CONSTRUCT STD. 6" CURB & GUTTER PER CITY STANDARD NO. 200
2. REMOVE EXISTING PAVING 1' FROM FUTURE LIP & FEATHER OVER TO MATCH NEW GUTTER
3. REMOVE EXISTING PAVING
4. CONSTRUCT 6" PCC SIDEWALK PER CITY STD. NO. 325



NOTE. STATIONING FOR WELLS AVENUE TAKEN FROM CITY PLANS R-938 ROAD NO. 1473-P



WELLS AVENUE

INDEXED MAP

**SALKIN ENGINEERING CORPORATION**  
1045 W. COLLINS AVE  
ORANGE, CALIFORNIA  
(714) 633-7261

*Samuel Salkin*  
SAMUEL SALKIN RCE 15420  
Sta. 701.62  
#2-95714

CITY OF RIVERSIDE, CALIFORNIA DEPARTMENT OF PUBLIC WORKS		STREET IMPROVEMENTS WELLS AVENUE STA 67471.61 TO STA 69430.55 FOR PM 61		PROJECT NO <b>R-1625</b>
APPROVED BY	BY	DATE	APPROVED BY	DATE
OFFICE ENGINEER		5/12/72		
TRAFFIC ENGINEER		5/12/72	DIRECTOR OF PUBLIC WORKS	
REVISIONS	DATE		DATE	
DESIGNED BY	DRAWN BY	CHECKED BY		

HORIZ SCALE 1" = 20' VERT SCALE 1" = 4'