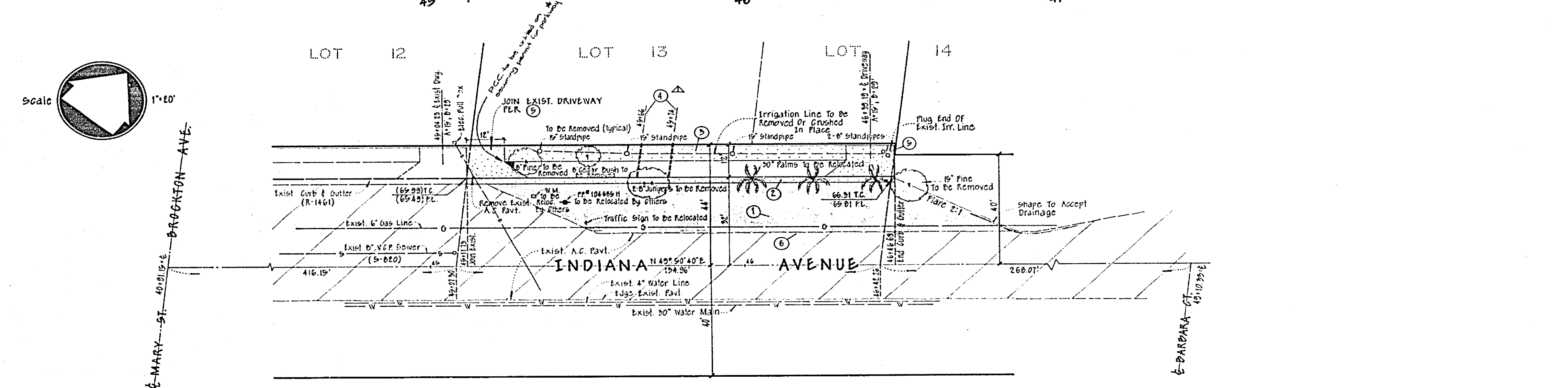
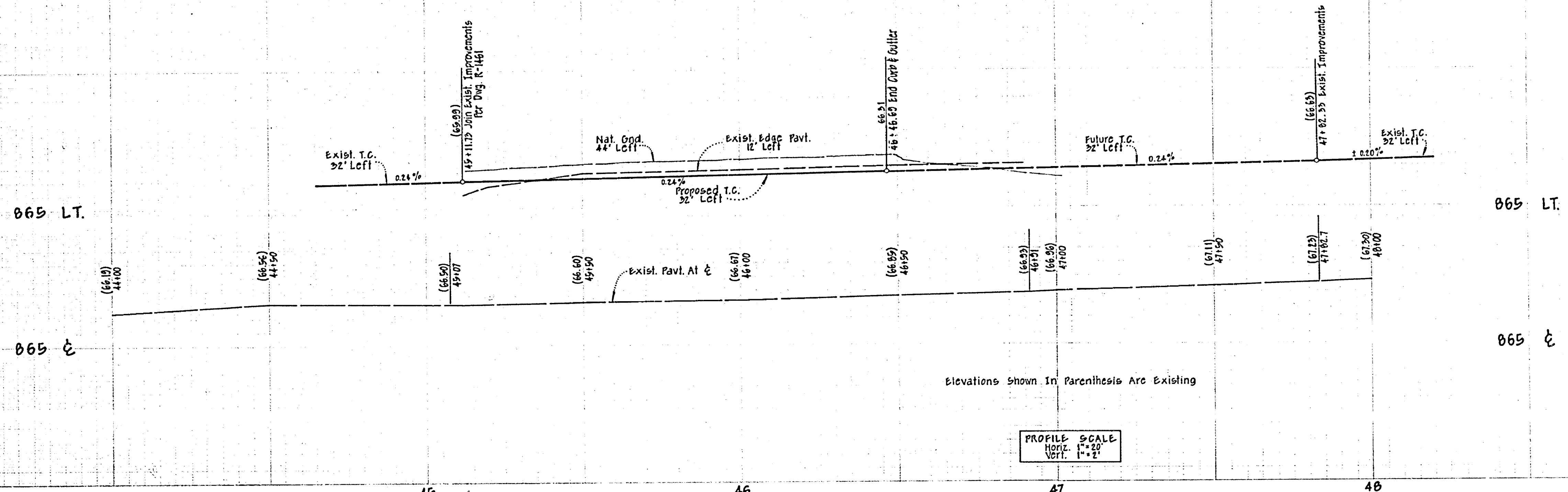
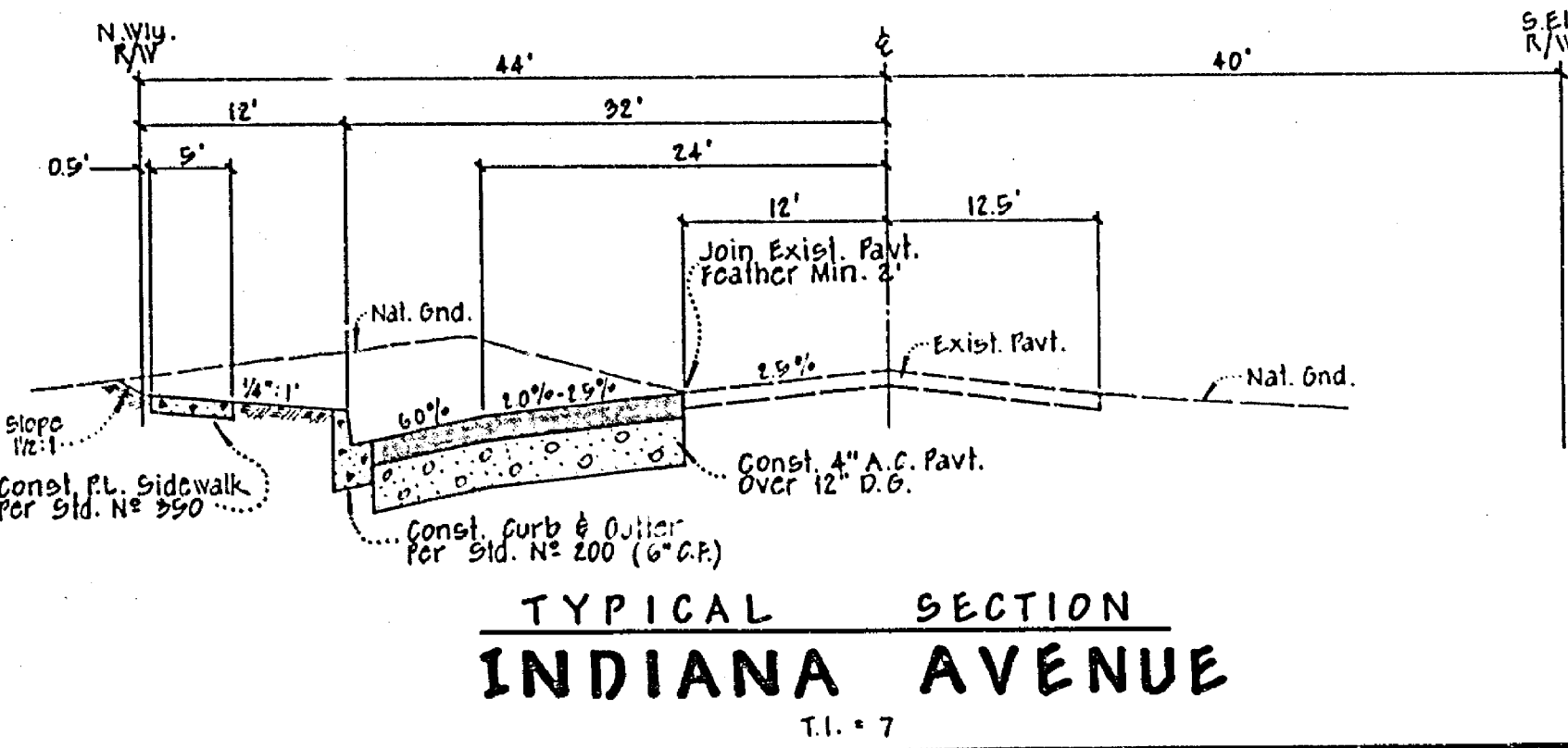


BENCH MARK
 S & L in West Curb Mary St Near Catch Basin
 on N.W. Cor. of Intersection w/ Indiana. P.B. 551/7
 ELEV. 865.88



GENERAL NOTES:

- Construction shall be in accordance with Standard Specifications for Public Works Construction 1970 Edition and the City of Riverside Standards Drawings.
- It shall be the responsibility of the contractor to clear the right of way in accordance with the provisions of law as it affects each utility, including irrigation lines and appurtenances at no cost to the city.
- Prime coat, seal coat and paint binder are required.
- Trim edge of exist. pavement where new pavement joins exist. pavement to a straight edge. Construct match-up paving as shown and overlay as directed in the field to produce a smooth crown section. Engineer estimates the overlay pavement to be 1 ton.
- All flagged elevations shall be staked in the field by the engineer.
- Elevations shown verified by field survey.
- For relocation of any water facility, contact commercial engineer at 787-7441 2 weeks in advance of work performance.
- For relocation of electrical, facility, contact Public Utilities Dept. at 787-7404 2 weeks in advance of work performance.



- CONSTRUCTION NOTES**
- Const. 4" A.C. over 12" D.G.
 - Const. Curb & Gutter Per Std. No 200 (6" C.F.)
 - Const. Property Line Sidewalk Per Std. No 390.
 - Install Under Sidewalk Drains-4" Dia Pipes
 - Const. Driveway Approach Per Std. No 302.
 - Join Exist. Edge of Pavement & Feather Min. 2'

ESTIMATE OF QUANTITIES

Excavation	127 C.Y.
4" A.C. Pavl.	2300 S.F.
12" Base	2300 S.F.
6" Curb & Gutter	130 L.F.
3" Sidewalk	109 L.F.
2- Driveways	290 S.F.
Under Sidewalk Drain	2 Ea.

NOTICE TO CONTRACTOR:
 The existence and location of any underground utility pipes or substructures shown on this plan are obtained by a search of the available records to the best of our knowledge there are no existing utilities except as shown on this plan. The contractor is required to take due precautionary measures to protect the utility lines shown and any other lines not of record.

THE ESTIMATE OF QUANTITIES SHOWN ON THIS PLAN IS FOR INFORMATION ONLY AND THE CITY ASSUMES NO RESPONSIBILITY FOR ITS ACCURACY.

CHIEF UTILITY ENGINEER-WATER DATE	MAXWELL, BROWN & MULLINS SAN BERNARDINO, CALIFORNIA PHILIP L. BROWN C.E. 18679	planning engineering surveying DATE 11-6-73	J.O. 12-10-9 F.B. CHECKED BY: P.H. DRAWN BY: O.K.	CITY OF RIVERSIDE, CALIFORNIA DEPARTMENT OF PUBLIC WORKS		INDEXED M 22 PROJECT NO.	
				APPROVED BY: [Signature] OFFICE ENGINEER DATE 1-15-73		APPROVED BY: [Signature] DIRECTOR OF PUBLIC WORKS DATE 1-15-73	
TYPICAL SECTION INDIANA AVENUE T.I. * 7				STREET PLAN AND PROFILE INDIANA AVENUE FROM 416' N. Ely. OF BROCKTON AVE. (MARY ST.) TO 591' N. Ely. Nth Side. ZONING CASE R-22-712		R-1635 SHEET 1 OF 1 FILE NO.	