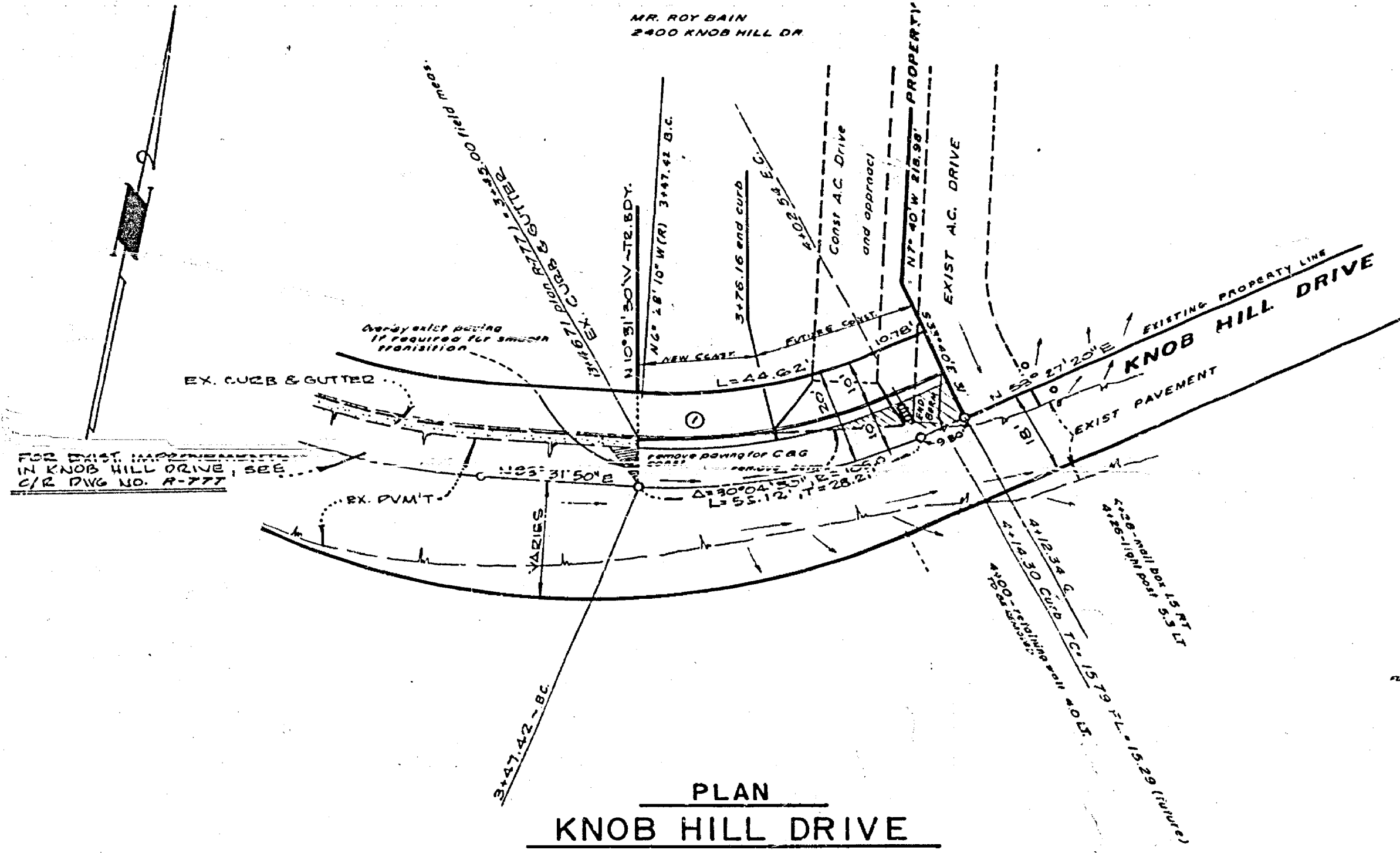


PROFILE
KNOB HILL DRIVE

CURB CURVE DATA

$\Delta = 151^\circ 40' 52''$
 $R = 93.00'$
 $L = 26.00'$
 $T = 13.00'$

Future curb curve data
 $\Delta = 141^\circ 23' 38''$
 $R = 93.00'$
 $L = 26.00'$
 $T = 13.00'$

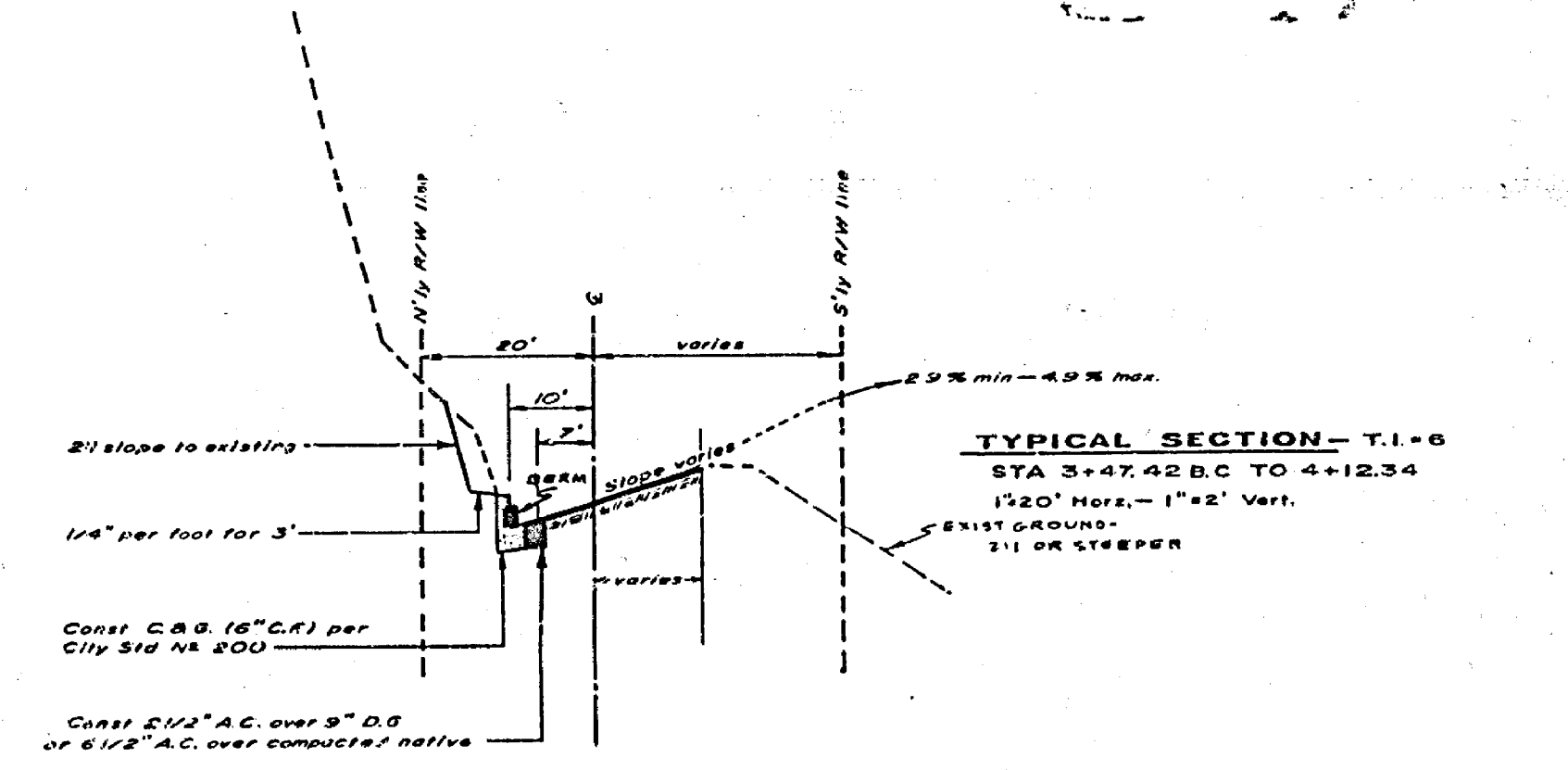


PLAN
KNOB HILL DRIVE

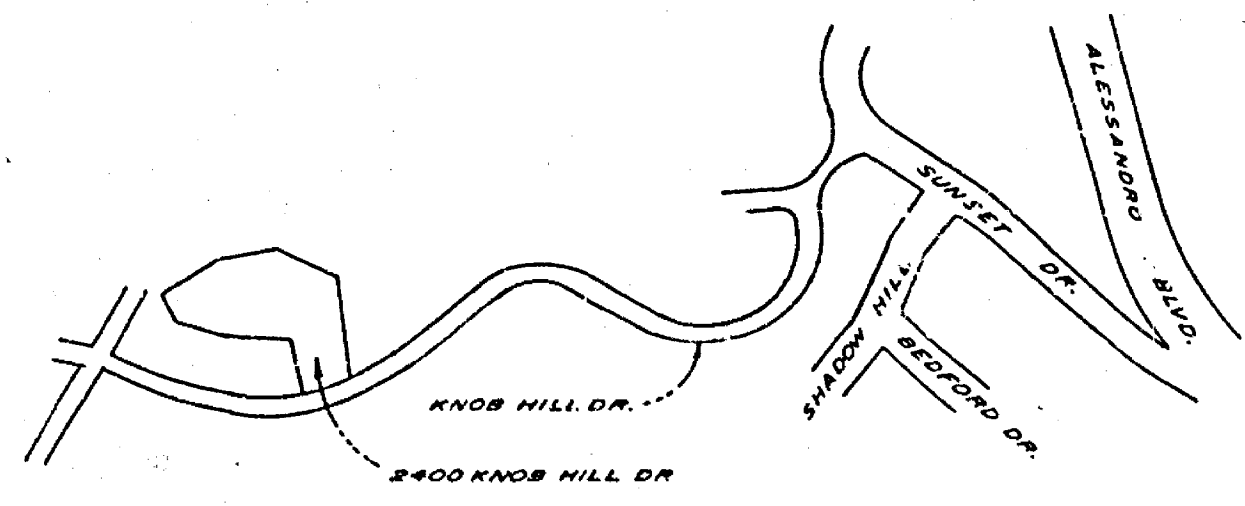
- GENERAL CONSTRUCTION NOTES—**
- All construction shall be in accordance with the Standard Specifications for Public Works Construction 1970 Edition and per City of Riverside Standard Drawings
 - All flagged elevations shall be staked in the field by the engineer.
 - Curb & gutter to be placed as shown.

BENCH MARK—

Conc. nail in N'ly curb of Sunrise Place, approx. 800' from end of curb at Knob Hill Drive ELEV. 1127.253 Field Book 840/68



TYPICAL SECTION - T.I.-6
STA 3+47.42 B.C. TO 4+12.34
1 1/2" Horiz. - 1" = 2' Vert.
EXIST. GRADES:
2:1 OR STEEPER



VICINITY MAP

ALBERT A. WEBB ASSOCIATES CIVIL ENGINEERS RIVERSIDE, CALIFORNIA APPROVED BY: <i>[Signature]</i> DATE: 4/17/73 R.E. No. 2576	CITY OF RIVERSIDE, CALIFORNIA PUBLIC WORKS DEPARTMENT		STREET PLAN AND PROFILE KNOB HILL DRIVE STATION 3+45 TO 4+13.34		ACCOUNT No. 72-494 DRAWING NUMBER R-1699
	APPROVED BY: <i>[Signature]</i> DATE: 4/17/73 TRAFFIC DIVISION CHIEF PUBLIC WORKS ENGINEER	APPROVED BY: <i>[Signature]</i> DATE: 4/17/73 DIRECTOR OF PUBLIC WORKS	BUILDING PERMIT 2400 KNOB HILL DR.		SHEET 1 OF 1 72-494-A

